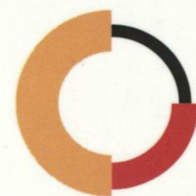
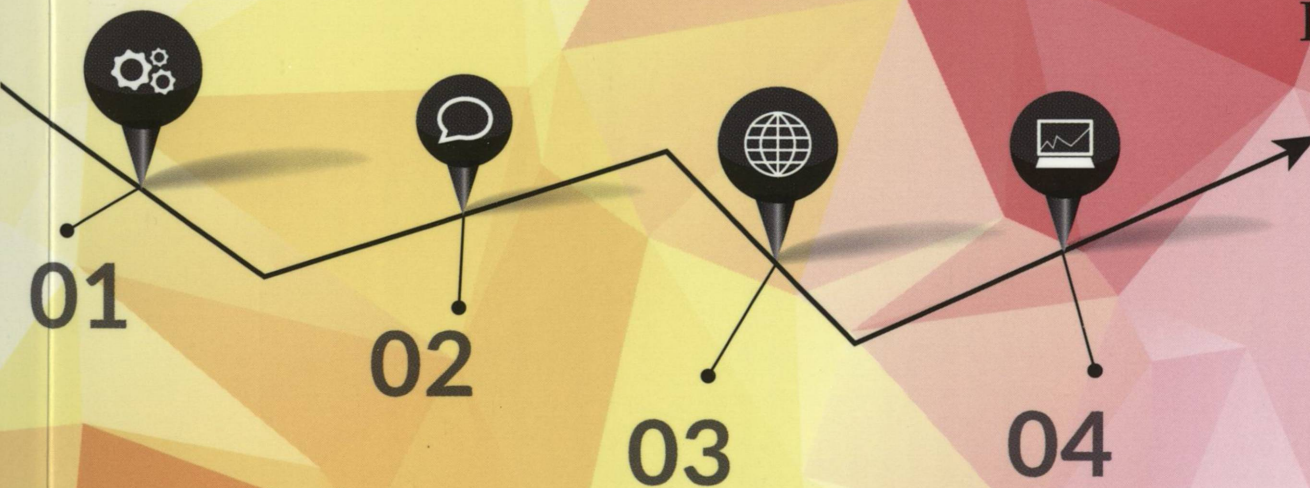


17th INTERNATIONAL MULTIDISCIPLINARY SCIENTIFIC GEOCONFERENCE SGEM 2017

CONFERENCE PROCEEDINGS
VOLUME 17

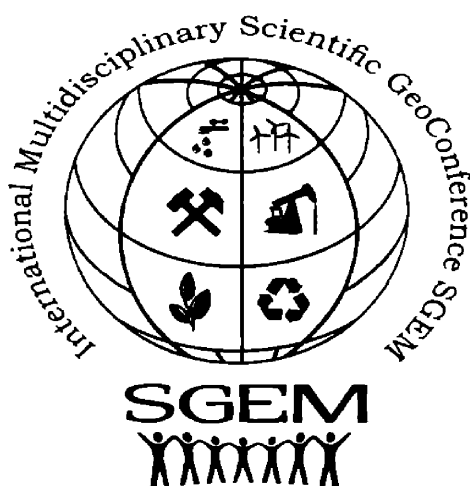
Informatics, Geoinformatics and
Remote Sensing
Issue 23



PHOTOGRAMMETRY AND REMOTE SENSING
CARTOGRAPHY AND GIS

**17th INTERNATIONAL MULTIDISCIPLINARY
SCIENTIFIC GEOCONFERENCE
S G E M 2 0 1 7**

**CONFERENCE PROCEEDINGS
VOLUME 17**



**INFORMATICS, GEOINFORMATICS AND REMOTE SENSING
ISSUE 23**

PHOTOGRAMMETRY AND REMOTE SENSING

CARTOGRAPHY AND GIS

**29 June - 5 July, 2017
Albena, Bulgaria**

DISCLAIMER

This book contains abstracts and complete papers approved by the Conference Review Committee. Authors are responsible for the content and accuracy.

Opinions expressed may not necessarily reflect the position of the International Scientific Council of SGEM.

Information in the SGEM 2017 Conference Proceedings is subject to change without notice. No part of this book may be reproduced or transmitted in any form or by any means, electronic or mechanical, for any purpose, without the express written permission of the International Scientific Council of SGEM.

Copyright © SGEM2017

All Rights Reserved by the International Multidisciplinary Scientific GeoConferences SGEM
Published by STEF92 Technology Ltd., 51 “Alexander Malinov” Blvd., 1712 Sofia, Bulgaria
Total print: 5000

ISBN 978-619-7408-03-4

ISSN 1314-2704

DOI: 10.5593/sgem2017/23

**INTERNATIONAL MULTIDISCIPLINARY SCIENTIFIC GEOCONFERENCE SGEM
Secretariat Bureau**

E-mail: sgem@sgem.org | URL: www.sgem.org

ORGANIZERS AND SCIENTIFIC PARTNERS

- THE CZECH ACADEMY OF SCIENCES
- LATVIAN ACADEMY OF SCIENCES
- POLISH ACADEMY OF SCIENCES
- RUSSIAN ACADEMY OF SCIENCES
- SERBIAN ACADEMY OF SCIENCES AND ARTS
- SLOVAK ACADEMY OF SCIENCES
- NATIONAL ACADEMY OF SCIENCES OF UKRAINE
- INSTITUTE OF WATER PROBLEM AND HYDROPOWER OF NAS KR
- NATIONAL ACADEMY OF SCIENCES OF ARMENIA
- SCIENCE COUNCIL OF JAPAN
- THE WORLD ACADEMY OF SCIENCES (TWAS)
- EUROPEAN ACADEMY OF SCIENCES, ARTS AND LETTERS
- ACADEMY OF SCIENCES OF MOLDOVA
- MONTENEGRIN ACADEMY OF SCIENCES AND ARTS
- CROATIAN ACADEMY OF SCIENCES AND ARTS, CROATIA
- GEORGIAN NATIONAL ACADEMY OF SCIENCES
- ACADEMY OF FINE ARTS AND DESIGN IN BRATISLAVA
- TURKISH ACADEMY OF SCIENCES
- NIZHNY NOVGOROD STATE UNIVERSITY OF ARCHITECTURE AND CIVIL ENGINEERING, RUSSIAN FEDERATION
- BULGARIAN ACADEMY OF SCIENCES
- BULGARIAN INDUSTRIAL ASSOCIATION
- BULGARIAN MINISTRY OF ENVIRONMENT AND WATER

INTERNATIONAL SCIENTIFIC COMMITTEE

Informatics, Geoinformatics and Remote Sensing

- PROF. ING. ALEŠ ČEPEK, CSC., CZECH REPUBLIC
- PROF. G. BARTHA, HUNGARY
- PROF. DR. DAMIR MEDAK, CROATIA
- PROF. PETER REINARTZ, GERMANY
- PROF. JAN KAZMIERCZAK, POLAND
- PROF. DR. JÓZSEF ÁDAM, HUNGARY
- PROF. RUI MIGUEL MARQUES MOURA, PORTUGAL

- PROF. DR. ING. KAREL PAVELKA, CZECH REPUBLIC
- PROF. DR. MARCEL MOJZES, SLOVAKIA
- PROF. VADIM ZHMUD, RUSSIA
- ASSOC. PROF. DR MILAN HOREMUZ, SWEDEN
- ASSOC. PROF. KRYSZYNA JANUSZKIEWICZ, POLAND
- DR. TIBERIU RUS, ROMANIA
- DR. MARKO KREVS, SLOVENIA

CONFERENCE PROCEEDINGS CONTENTS

SECTION PHOTOGRAMMETRY AND REMOTE SENSING

- 1. ADVANCED ACCURACY TESTS OF DATASETS GATHERED BY UAVS,** Jan Pacina, Jan Popelka, Sandra Klimesova, J. E. Purkyne University in Usti nad Labem, Czech Republic.....3
- 2. AGRICULTURAL CROPS MAPPING BASED ON SENTINEL-1 SAR C-BAND DUAL-POLARIMETRIC DATA,** Mleczek Magdalena, Mroz Marek, Sliesinski Przemyslaw, Fitrzyk Magdalena, University of Warmia and Mazury in Olsztyn, Poland..... 11
- 3. AIRBORNE DATA FOR CREATING ENVIRONMENTAL 3D MODELS,** Dr. Andreea Florina Jocea, Dr. Catalina Cristea, Technical University of Civil Engineering Bucharest-Faculty of Geodesy, Romania 19
- 4. ANALYSIS OF LAND USE/LAND COVER CLASSIFICATION RESULTS DERIVED FROM SENTINEL-2 IMAGE,** Aycan Murat MARANGOZ, Aliihsan SEKERTEKIN, Hakan AKCIN, Bulent Ecevit University, Turkey25
- 5. APPLICATIONS OF REMOTE SENSING TECHNIQUES FOR RESEARCH ON BIOECONOMY FIELD,** Marian BUTU, Steliana RODINO, Petruta PETRACHE, Alina BUTU, National Institute of Research and Development for Biological Sciences, Romania33
- 6. APPLYING THE ELASTIC MAP METHOD FOR THREE-DIMENSIONAL DISTRIBUTION OF THE COEFFICIENTS,** A.D. Rukhovich, D.D. Rukhovich, D.I. Rukhovich, D.A. Shapovalov, A.L. Kulyanitsa, Soil Science Institute, Russia.....41
- 7. ARCHAEOLOGICAL SURVEY OF A FIELD FORTIFICATION OF THE THIRTY YEARS WAR,** Martina Hulkova, Eva Matouskova, prof. Karel Pavelka, Tomas Janata, CTU in Prague, Czech Republic.....47
- 8. CLOSE RANGE PHOTOGRAMMETRY IN CULTURAL HERITAGE PRESERVATION,** Assist. PhD. Eng. Gridan Maria - Roberta, Lect. PhD. Eng. David Viorica, Politehnica University of Timisoara, Romania55
- 9. CREATING HDR PHOTO BY MANIPULATING DYNAMIC RANGE OF A SINGLE RAW FORMAT PHOTO,** Dubravka Maurer, Dr. Sanja Samanovic, Assist. Prof. Dr. Dubravko Gajski, University of Zagreb, Faculty of Geodesy, Croatia63
- 10. DIFFERENCES IN THE QUANTITY AND DISTRIBUTION OF THE PS CANDIDATES IN VV AND VH SENTINEL-1 DATA SET,** Hubert Malik, Andrzej Lesniak, Radoslaw Murdzek, AGH University of Science and Technology, Poland 71

11. ESTIMATING LAND USE/COVER OF FOSHAN CITY IN SOUTHERN CHINA WITH LANDSAT REMOTE SENSING IMAGERY FOR FLOOD HYDROLOGICAL MODELING , Yangbo Chen, Xue An, Peng Dou, Tao Zhang, University, China.....	79
12. EVALUATION OF FOREST DISTURBANCES IN THE LOW TATRAS NATIONAL PARK USING TIME SERIES OF SATELLITE IMAGES , Josef Lastovicka, Radovan Hladky, Premysl Stych, Lukas Holman, Charles University, Czech Republic.....	87
13. EVALUATION OF OPEN DRONE MAP TOOLKIT FOR GEODETIC GRADE AERIAL DRONE MAPPING – CASE STUDY , Pawel Burdziakowski, Gdansk University of Technology, Poland	101
14. EVALUATION OF THE MARKER RADIUS ON EFFICIENCY OF TERRESTRIAL LIDAR DATA WATERMARKING , Assist. Prof. Dr. Bogdan Lipus, Prof. Dr. Borut Zalik, University of Maribor Faculty of Electrical Engineering and Computer Science, Slovenia.....	111
15. EVALUATION OF THE USE OF SATELLITE INTERFEROMETRY TO DETERMINE PLACES WITH A HIGHER PROBABILITY OF A STRONG MINING TREMOR OCCURRENCE , Karol Kura, Central Mining Institute (GIG), Poland.....	119
16. EXAMINATION OF THE QUALITY OF A LASER BEAM REFLECTED FROM HOMOGENOUS MATERIALS OF DIFFERENT COLORS , Joanna A. Pawlowicz, University of Warmia and Mazury in Olsztyn, Poland.....	127
17. GIS-BASED TEMPORAL ANALYSIS OF GLACIER CHANGES ON AGRI MOUNTAIN USING LANDSAT DATA , Dr. Mustafa Yalcin, Mehmet Ali Ugur, Nizar Polat, Dr. Mehmet Ali Dereli, Afyon Kocatepe University, Turkey.....	133
18. IMPACT OF THE QUALITY OF 3D LASER SCANNING OF THE BUILDING FOR THE RESULTANT POINT CLOUD , Joanna A. Pawlowicz, Elzbieta Szafranko, University of Warmia and Mazury in Olsztyn, Poland.....	141
19. JOINT ANALYSIS OF VARIOUS PRECURSORS OF SEISMIC EVENTS USING REMOTE SENSING DATA AT THE EXAMPLE OF EARTHQUAKE IN ITALY (24.08.2016, M6.2) , Dr., Prof. Valery Bondur, Marina Tsidilina, Elena Gaponova, Olga Voronova, State scientific Institution Institute for Scientific Research of Aerospace Monitoring AEROCOSMOS, Russia.....	149
20. LAKE SHORELINE CHANGES OF THE SELECTED LAKES IN HIGH TATRAS (1949-2015) , David Tomko-Kralo, Juraj Kapusta, Gabriel Bugar, Anton Sedlak, Juraj Hresko , Constantine the Philosopher University in Nitra, Slovakia.....	163

- 21. LOW COST CULTURAL HERITAGE DIGITAL DOCUMENTATION**, Dimen Levente, Borsan Tudor, Gaban Vasile Lucian, University 1 Decembrie, Romania.....171
- 22. MODELING AND PRECISION STUDY WITH PHOTOGRAMMETRY METHOD OF THE "INCE MINARET" MUSEUM**, Lecturer Dr.Ali ULVI , Prof. Dr. Murat YAKAR, Prof. Dr. Cengiz ALYILMAZ, Assoc. Prof. Dr. Semra ALYILMAZ, Mersin University, Turkey179
- 23. PHOTOGRAMMETRIC IBMR TECHNOLOGY AND LASER SCANNING IN CULTURAL HERITAGE DOCUMENTATION**, Eliska Housarova, Jaroslav Sedina, Prof. Karel Pavelka, CTU in Prague, Czech Republic187
- 24. PHOTOGRAMMETRIC MEASUREMENT OF CONCRETE PANEL DEFORMATIONS DURING LOAD TEST**, Marek Frastia, Marian Marcis, Tomas Augustin, Slovak University of Technology in Bratislava - Faculty of Civil Engineering, Slovakia195
- 25. POINT CLOUD BASED SURFACE ANALYSIS OF PRESTRESSED CONCRETE ELEMENT IN EXCEEDED STATE OF SERVICEABILITY**, Patryk Ziolkowski, Gdansk University of Technology, Poland203
- 26. PROCESSING OF POINT CLOUD DATA RETRIEVED FROM TERRESTRIAL LASER SCANNING FOR STRUCTURAL MODELING BY FINITE ELEMENT METHOD**, Patryk Ziolkowski, Gdansk University of Technology, Poland.....211
- 27. REMOTE SENSING IMAGERY APPLICATIONS FOR THE WAVE'S FIELD TRANSFORMATIONS IN THE ADJACENT AREAS OF THE ROMANIAN MARITIME PORTS**, Dr. Eng. Angela Ivan, PhD. Student Elena VlasceanuProf, Dr. Eng. Nicolae Buzbuchi, Dunarea de Jos University of Galati, Romania.....219
- 28. SATELLITE MONITORING OF WILDFIRES AND THEIR EFFECTS IN THE NORTHERN EURASIA**, Dr., Prof. Valery Bondur, Kristina Gordo, State scientific Institution Institute for Scientific Research of Aerospace Monitoring AEROCOSMOS, Russia227
- 29. SPATIO-TEMPORAL ANALYSIS OF URBAN EXPANSION USING REMOTE SENSING DATA**, Dr. Mehmet Ali Dereli, Mehmet Ali Ugur, Nizar Polat, Dr. Mustafa Yalcin, Afyon Kocatepe University, Turkey239
- 30. SURVEY SKETCH IN TERMS OF DIGITAL PROCESSING AND CONTROL**, Ing. Lubica Hudecova, PhD., Ing. Robert Geisse, Slovak University of Technology in Bratislava - Faculty of Civil Engineering, Slovakia247

31. THE ACCURACY OF DETERMINATION OF NATURAL STONE CRACKS PARAMETERS BASED ON TERRESTRIAL LASER SCANNING AND DENSE IMAGE MATCHING DATA, Volodymyr Levytskyi, Assist. Prof., Ruslan Sobolevskyi, Assoc. Prof., Dorota Zawieska, Prof., Jakub Stefan Markiewicz, Assist. Prof., Warsaw University of Technology, Poland.....	255
32. THE ASSESSMENT OF AN IMPACT OF MEAN SEA LEVEL CHANGE IN THE MID-ADRIATIC REGION BASED ON SATELLITE ALTIMETER RECORDS, Marijan Grgic, Senka Jukic, Robert Steven Nerem, Tomislav Basic, University of Zagreb, Faculty of Geodesy, Croatia.....	263
33. THE ASSESSMENT OF MODERN PHOTOGRAMMETRIC SURVEYING METHODS IN ROAD WORKS APPLICATIONS, Krzysztof Karsznia, Ph. D. Eng., Krystian Piatkowiak, M. Sc. Eng., Warsaw University of Life sciences – SGGW, Poland	271
34. THE COMPARISON OF AGGREGATE MICROTTEXTURE EVALUATION APPROACH BASED ON THREE DIMENSIONAL IMAGE ANALYSIS AND PROFILE BASED EVALUATION, Zuzana Florkova, Lubomir Pepucha, Stefan Sedivy, Lukas Duris, Michal Veselovsky, University of Zlina, Slovakia.....	279
35. THE IMPORTANCE OF PHOTOGRAMMETRIC METHODS IN THE ARCHIVING OF CULTURAL HERITAGE: CASE OF SEKERFURUS MESCID (MOSQUE), Professor Dr. Murat YAKAR, Dr.Ali ULVI, Prof. Dr. Cengiz ALYILMAZ, Assoc. Prof. Dr. Semra ALYILMAZ, Mersin University, Turkey	287
36. OPTIMIZATION OF TARGET-BASED TLS MEASUREMENTS, Dr Artur Warchol, University of Agriculture in Krakow - Faculty of Environmental Engineering and Land Surveying, Poland.....	295
37. THE UNEXPECTED MORPHOMETRY IN DIGITAL TERRAIN MODEL DERIVED FROM UNMANNED AERIAL VEHICLE IMAGES, Assist. Prof. Dr. Dubravko Gajski, Dubravka Maurer, Dr. Sanja Samanovic,, University of Zagreb, Faculty of Geodesy, Croatia	303
38. UNMANNED AERIAL VEHICLE-BASED REMOTE SENSING FOR MONITORING LANDSCAPE DEGRADATION, Dr. Stefano Cara, Dr. Sandro Fadda, Dr. Maddalena Fiori, Dr. Ing. Carlo Matzuzzi, Italian National Council Researches, CNR, Italy.....	309
39. URBANIZATION AND AGRICULTURAL LAND USE CHANGES IN THE CITY OF AL-QATIF, SAUDI ARABIA, Muhammad Tauhidur Rahman, King Fahd University of Petroleum & Minerals (KFUPM), Saudi Arabia.....	317
40. USE OF GEOMATIC METHODS FOR FINDING AND DOCUMENTATION OF HISTORICAL ARTILLERY REDOUBTS, Eliska Housarova, Jaroslav Sedina, Prof. Karel Pavelka, CTU in Prague, Czech Republic	323

- 41. USING OF RPAS IN PRECISION AGRICULTURE**, Jaroslav Sedina, Eliska Housarova, Paulina Raeva, CTU in Prague, Czech Republic331
- 42. USING REMOTE SENSING DATA TO MONITOR VOLCANIC ACTIVITY: MOUNT ETNA CASE STUDY**, Dr., Prof. Valery Bondur, Olga Voronova, State scientific Institution Institute for Scientific Research of Aerospace Monitoring AEROCOSMOS, Russia339
- 43. USING THE CLOSE RANGE PHOTOGRAMMETRY TECHNIQUE IN 3-DIMENSIONAL WORK: HISTORY OF OBRUKHAN SAMPLE**, Lecturer Dr. Ali ULVI, Prof. Dr. Murat YAKAR, Prof. Dr. Cengiz ALYILMAZ, Assoc. Prof. Dr. Semra ALYILMAZ, Mersin University, Turkey347

SECTION CARTOGRAPHY AND GIS

- 44. A NATIONAL-SCALE ASSESSMENT OF THE TOPSOIL CLAY CONTENT MAP OF ROMANIA DERIVED FROM THE LUCAS SURVEY**, Ruxandra Vintila, ICPA - Bucuresti, Romania359
- 45. ACHIEVING ADEQUATE INTERFACE FOR DATA TRANSFER ON SURVEYING EQUIPMENTS**, Pisleaga Mihaela, Eles Gabriel, Popescu Daniela, Politehnica University of Timisoara, Romania369
- 46. APPLICATION OF AHP METHOD FOR MAPPING SLOPE GEOMORPHIC PHENOMENA**, Adrian Grozavu, Cristian Valeriu Patriche, Florin Constantin Mihai, Alexandru Ioan Cuza University, Romania.....377
- 47. APPLICATION OF GIS TECHNIQUES TO MAKE AN INVENTORY OF AREAS DAMAGED BY MINING EXPLOITATION.**, Dorota Palka, Marcin Dabrowski, Jaroslav Brodny, Silesian University of Technology, Poland385
- 48. AUTOMATED ASSESSMENT OF PROFILES FOR BUILDING SMALL WATER RESERVOIRS**, Vaclav DAVID, Jan DEVATY, Tereza DAVIDOVACTU in Prague-Faculty of Civil Engineering, Czech Republic393
- 49. CARTOGRAPHY TASK FOR ACHIEVING SUSTAINABLE DEVELOPMENT**, Prof. dr. eng. Maricel Palamariu, Assoc. Prof. dr. eng. habil. Ildiko Tulbure, Lect. dr. eng. Alexandra Dreghici, 1 Decembrie 1918 University of Alba Iulia, Romania.....401
- 50. CHANGE VALUE ANALYSIS OF NATURAL AREA INDICATOR IN POLISH MUNICIPALITIES BEASED ON LANDUSE**, PhD Cieslak Iwona, PhD Szuniewicz Karol, PhD Czyza Szymon, PhD Pawlewicz Katarzyna, University of Warmia and Mazury, Poland409

51. CITY POPULATION'S BEHAVIOR IN PUBLIC TRANSPORTATION, Zajickova, L., Burian, J., Vozenilek, V., Ivan, I., Horak, J., Palacky University in Olomouc, Czech Republic.....	417
52. COAL-WASTE DUMPS DATABASE OF UPPER SILESIAN COAL BASIN, MSc Anna Abramowicz, PhD Ryszard Chybiorz, University of Silesia, Poland	425
53. COMPARISON OF APPROXIMATION QUALITY OF EARTH'S SURFACE FOR DIFFERENT LANDFORM TYPES (ON EXAMPLES OF ALGEBRAIC AND TRIGONOMETRIC TRENDS), Kharchenko Sergey, Kazan (Volga Region) Federal University, Russia.....	431
54. COMPARISONS BETWEEN CLASSIC TOPOGRAPHIC MEASUREMENTS METHODS AND LIDAR METHOD ON THE CORRIDOR OF 400 KV POWER LINE, PARTA-SAG SECTOR, PhD. Adrian Smuleac, PhD. Lecturer. Iacob Nemes, , PhD Eng. Assistant Professor Ioana Alina Cretan, PhD. Chem- biol. Nicoleta Sorina Nemes, PhD. Lecturer Laura Smuleac Politehnica University Timisoara, Romania	439
55. CZECH HISTORICAL ATLAS, Jakub Havlicek, CTU in Prague, Czech Republic.....	449
56. DETERMINATION OF RELATIONSHIP BETWEEN SOIL COVER AND LAND USE BY RETROSPECTIVE MONITORING, P.V. Koroleva, D.I. Rukhovich, G,A, Suleiman, D.A. Shapovalov, A.L. Kulyanitsa, Dokuchaev Soil Science Institute, Russia	457
57. DEVELOPMENT OF METHODS FOR DETERMINING THE AREA FLOODED BY DEM FOR HYDROLOGICAL MODELING (FOR EXAMPLE, THE AKSAI RIVER BASIN), Yerkin Kakimzhanov, Serik Altynbek, Saule Bektemirova, Alua Turginbaeva, al – Faraby Kazakh National University, Kazakhstan.....	465
58. DIGITAL MODELS OF OLD GLOBES CREATED FROM THE GLOBE SEGMENTS, Jan Havrlant, Klara Ambrozova, Milan Talich, Ondrej Bohm, VUGTK, v.v.i., Czech Republic.....	473
59. ELEVATION DATA FOR MORPHOMETRIC ANALYSIS OF HISTORICAL PONDS DAMS, Vaclav DAVID, Josef KRASA, Petr KOUDELKA, Tereza DAVIDOVA, CTU in Prague-Faculty of Civil Engineering, Czech Republic.....	481
60. EVALUATION OF TRANSPORT ACCESSIBILITY IN THE UNIVERSITY CAMPUS KORTOWO FROM PUBLIC TRANSPORT USING GEOINFORMATION TOOLS, Elzbieta Lewandowicz, University of Warmia and Mazury in Olsztyn, Poland	489

- 61. FIRE DEPARTMENT INTERVENTIONS MAPPING WITH THE USAGE OF THE GIS TOOLS**, Tomasz Bajerowski, , Anna Kowalczyk, Michal Ogrodniczak University of Warmia and Mazury in Olsztyn, Poland497
- 62. GEOINFORMATION SYSTEM FOR COLLECTING TERRESTRIAL AND SATELLITE DATA DURING PERIODS OF SEISMIC ACTIVITY IN THE NORTHERN TIEN SHAN**, Saule Mukasheva, Gulnar Sharipova, Andrei Malimbaev, Institute of Ionosphere, Kazakhstan505
- 63. GEOSTATICAL ANALYSIS OF DENDROLOGICAL OBJECTS IN THE ACADEMIC CAMPUS KORTOWO I (OLSZTYN, POLAND)**, Lewandowicz Elzbieta, Mariusz Antolak, University of Warmia and Mazury in Olsztyn, Poland511
- 64. GIS TECHNOLOGY USE BY MONITORING OF THE OBJECTIVES OF SUSTAINABLE DEVELOPMENT IN ZLATNA LOCALITY**, Borsan Tudor, Dimen Levente, Vintan Ioana, 1 Decembrie 1918 University of Alba Iulia, Romania.....519
- 65. GIS TOOLS IN THE RESTORATION OF HISTORIC PARKS ON THE EXAMPLE OF THE WARMINSKO-MAZURSKIE VOIVODESHIP IN POLAND**, Antolak Mariusz, University of Warmia and Mazury in Olsztyn, Poland527
- 66. GIS-APPLICATION FOR ENVIRONMENTAL MANAGEMENT IN MINING AREAS ON THE EXAMPLE OF THE MOLTENO COAL FIELD, INDWE, EASTERN CAPE**, Afsoon Moatari-Kazerouni, Rhodes University, South Africa.....535
- 67. GIS-BASED LOCAL GEOMORPHOLOGICAL CONSTRAINTS ASSESSMENT (A CASE STUDY: CLUJ-NAPOCA MUNICIPALITY, ROMANIA)**, Octavian-Liviu Muntean, Radu Mihaiescu, Gheorghe Rosian, Liviu Buzila, Vlad Macicasan, Babes-Bolyai University, Romania.....541
- 68. GIS-CARTOGRAPHY OF THE ARCHAEOLOGICAL SITES AND THEIR LOCATION IN THE LANDSCAPES OF RIVER VALLEY ORTOLYK IN THE HOLOCENE (SOUTH-EASTERN ALTAI)**, A. Glebova, I. Sergeev, K. Shelest, Saint Petersburg State University, Russia551
- 69. GNSS APPROACH ON SMALL REGIONAL NON PUBLIC AIRPORTS**, Jozef Sabo, Peter Korba, Matej Antosko, Miriam Sekelova, Robert Rozenberg, Technical University of Kosice, Slovakia559
- 70. IMPROVEMENT OF THE GEOMETRIC FOUNDATION FOR SPATIAL DATA INFRASTRUCTURE**, Nedim Tuno, Admir Mulahusic, Jusuf Topoljak, Dzenana Mahmutagic, Dusan Kogoj, Faculty of Civil Engineering, University of Sarajevo, Bosnia and Herzegovina.....565

71. LATVIAN SPATIAL METADATA CATALOGUE' CONTENT AND SUMMARY FOR REFERENCED SPATIAL DATA SETS AND SERVICES,	
Jurijs Holms, Gatis Vitols, Latvia University of Agriculture, Latvia.....	573
72. MAP PROJECTIONS USED IN ROMANIA FOR MILITARY PURPOSES: LAMBERT-CHOLESKY AND GAUSS- KRUGER,	
Lect. Dr. Eng. Doina Vasilca, PhD Student Eng. Andreea Iliescu-Cremeneanu, Prof. Dr. Eng. Gheorghe Badea, Assoc. Prof. Dr. Eng. Gheorghe Badea Technical University of Civil Engineering - Faculty of Geodesy, Romania.....	581
73. MAPPING LAND-USE DYNAMIC IN THE VIETNAMESE MEKONG DELTA,	
Le Thuy Ngan, Arnold K. Bregt, Wageningen University and Research centre, Netherlands.....	589
74. MODEL OF THE QUALITY OF DATA COLLECTED IN THE TOPOGRAPHIC DATABASE,	
Ph.D. Marek Slusarski, Ph.D. Monika Siejka, University of Agriculture in Krakow - Faculty of Environmental Engineering and Land Surveying, Poland.....	595
75. MONITORING RARE PLANT SPECIES, LOCATED IN PROTECTED AREAS, WITH GIS THROUGHOUT TECHNOLOGY,	
Constantin Bofu, Costel Boariu,Iulian Hogas, Petru Cercel, Tomi Hraniciuc, Gheorghe Asachi Technical University of Iasi, Romania.....	603
76. MONITORING THE EVOLUTION OF GULLIES IN A WATER CACHMENT BY GIS TECHNIQUES,	
Prof., Dr. eng. Gabriela BIALI, Lecturer, Ph.D., eng. Paula COJOCARU, Gheorghe Asachi Technical University of Iasi, Romania.....	611
77. NETWORK STRUCTURES IN ELABORATION OF UNIFORMED SERVICES INTERVENTION MAPS,	
Tomasz Bajerowski, Anna Kowalczyk, Michal Ogrodniczak, University of Warmia and Mazury in Olsztyn, Poland	619
78. NORMALIZED DIFFERENCE VEGETATION INDEX IN "VERTICAL" ANALYSIS OF GRASSLANDS,	
Luminita Cojocariu, Loredana Copacean, Cosmin Popescu, Despina - Maria Bordean, Banat University of Agronomical Sciences and Veterinary Medicine, Romania.....	625
79. REMOTE SENSING AND GIS BASED FOREST COVER MAPPING: A CASE STUDY IN CENTRAL SIBERIA,	
Dr. Irina Danilova, Dr. Vera Ryzhkova, Dr. Michael Korets, Institute of Forest of the Siberian Branch of the Russian Academy of Sciences, Russia	633
80. RESEARCHES USING IMAGE PROCESSING IN AUTOMATIC MAPPING OF WEEDS WITHIN GIS SYSTEMS,	
Mihai Gidea, Catalin Constantinescu, Alexandra Trif, Alexandru Boasca, Marina Burcea, University of Agronomic Sciences and Veterinary Medicine, Romania.....	641

- 81. SPATIAL ASSESSMENT OF CONSTRUCTION WASTE GENERATED BY RESIDENTIAL BUILDINGS IN RURAL AREAS**, Florin Constantin Mihai, Adrian Grozavu, Alexandru Ioan Cuza University, Romania.....649
- 82. SPATIAL DATA VISUALIZATION: THE APPROPRIATE USE OF COLOURS**, Andrea Hohnova, Alena Vondrakova, Palacky University in Olomouc, Czech Republic.....657
- 83. SPATIOTEMPORAL CHANGES OF THE PLOUCNICE RIVER FOR THE EXPLANATION OF POLLUTION DISTRIBUTION IN THE FLOODPLAIN**, Ph.D. Jitka Elznicova, Bc. Diana Hrubesova, J. E. Purkyne University in Usti nad Labem, Czech Republic.....665
- 84. SYSTEMATIC CADASTRE FOR AGRICULTURAL LAND IN ROMANIA**, Constantin Irinel Gresita, Teodor Lucian Grigorie, Toposurvey, Romania.....673
- 85. SYSTEMATIC CARTOGRAPHY IN WEB ATLAS ENGINEERING**, Vit Vozenilek, Alena Vondrakova, Palacky University in Olomouc, Czech Republic679
- 86. THE ACHIEVING OF CADASTRAL DATA BANK FOR REAL ESTATES INTENDED ON RESTITUTION ACTIONS**, Prof. Dr. Eng. Ioan IENCIU, 1 Decembrie 1918 University of Alba Iulia, Romania.....687
- 87. THE ANALYSIS OF LAND COVER CHANGE IN CROATIA BASED ON CORINE MODEL**, Marijan Grgic, Tomislav Basic, University of Zagreb, Faculty of Geodesy, Croatia695
- 88. THE EVOLUTION OF TRANSYLVANIAN ETHNIC GROUPS FROM 1869 TO PRESENT REFLECTED IN THEMATIC MAPS**, PhD Student Eng. Andreea Iliescu-Cremeneanu, Lect. Dr. Eng. Doina Vasilca, Assoc. Prof. Dr. Eng. Ana-Cornelia Badea, Prof. Dr. Eng. Gheorghe Badea, Technical University of Civil Engineering - Faculty of Geodesy, Romania703
- 89. THE GEOSPATIAL DISTRIBUTION OF CATHOLIC SACRAL BUILDINGS WITHIN VOLYN OBLAST IN UKRAINE**, Phd student Pavlo Kucher, Professor Ivan Voloshyn, Lviv State University of Physical Culture, Ukraine711
- 90. THE IMPACT OF ECONOMIC GROWTH, LOGGING AND REFORESTATION ON THE ROMANIAN FOREST STOCK**, Septimiu-Rares Szabo and Giuliano Tevi, Bucharest University of Economic Studies, Romania.....719
- 91. THE LAND EVALUATION OF THE DANUBE VALLEY IN ORDER TO RENATURATION WITH GIS TECHNOLOGIES**, Slave Camelia, Vasca Zamfir Diana, University of Agronomic Science and Veterinary Medicine - Bucharest, Romania.....727

92. THE METHODS OF FORMATION THE AREAL STRUCTURE OF NATURAL CULTURAL FRAMEWORK BY THE EXAMPLE OF THE MARI EL REPUBLIC, Olga Zhguleva, Alena Kramchaninova, Daniil Lastochkin, Volga State University of Technology, Russia	735
93. THE POTENTIAL URBAN OPEN SPACES IDENTIFICATION METHODOLOGY FOR THE STRATEGIC PLANNING IN NEIGHBORHOODS, Marita Cekule, Irina Baltmane, University of Latvia, Latvia	743
94. THE QUALITY OF SOCIAL SPACE MAPPING: THE CASE OF TYUMEN, RUSSIA, Assoc. Prof. Alena Popkova, Prof. Natalya KostkoProf. Djamilia Skripnuk Tyumen State University, Russia	753
95 THE STRUCTURE OF THE STEP PYRAMID OF DJOSER IN EGYPT AS A CONCEPT OF PRIMORDIAL HILL, Valdis Seglins, Agnese Kukela, Baiba Lazdina, University of Latvia, Latvia.....	761
96. THE USE OF ACOUSTIC MAPS IN MODELING FEATURES OF OBJECT ORIENTED ON ACOUSTIC QUALITY OF THE ENVIRONMENT, Waldemar Paszkowski, Marcin Dabrowski, Silesian University of Technology, Poland	769
97. THE USE OF GIS TO SELECT THE OPTIMAL ROUTE FOR THE MOVEMENT OF MEDICAL VEHICLES OF VARIOUS TERRAIN IN CHANGING NATURAL CONDITIONS, St. Evgeniia Ivanova St. Aleksandr Trifonov, , PhD Andrey Karmanov, Vsevolod Rudakov, St. Elena Vinogradova, ITMO University, Russia.....	777
98. THE USE OF TERRESTRIAL LASER SCANNING AND GIS TECHNOLOGY IN THE STUDY OF SOIL EROSION, Gabriel BADESCU, Aurel CALINA, , Jenica CALINA, Marius MILUT, Rodica BADESCU University Of Craiova, Romania	783
99. THE USE OF THE ROMANIAN POSITION DETERMINATION SYSTEM (ROMPOS) AND GNSS IN IDENTIFYING PARCELS FOR THE AGRICULTURE PAYMENTS AND INTERVENTION AGENCY, Gabriel BADESCU, Aurel CALINA, Rodica BADESCU, Jenica CALINA, Caius DIDULESCU., University Of Craiova, Romania	791
100. TO BE OR NOT TO BE GREEN? THE CHALLENGE OF URBAN SUSTAINABLE DEVELOPMENT IN THE POST-SOCIALIST CITY. CASE STUDY: CENTRAL AND EASTERN EUROPE, Alexandra SANDU, University Lumiere Lyon 2, France	799
101. TOPONYMAL MAP OF HIGH TATRAS MOUNTAINS, Tomas Cesnek, Vladimir Kotka, University of Zlina, Slovakia	807

- 102. UAV TECHNOLOGY USED IN FACILITY MANAGEMENT IN THE CAMPUS OF THE BUCHAREST UNIVERSITY OF AGRICULTURAL SCIENCES AND VETERINARY MEDICINE**, MIHAI Doru, MUDURA Radu, CALUGARU Andreea, SARBU Nicoleta, ILINCA Liviu, University of Agronomic Science and Veterinary Medicine - Bucharest, Romania813
- 103. UNCERTAINTY OF CALCULATION THE AREA OF PARCELS**, Ph.D Marek Slusarski MSc Natalia Justyniak, University of Agriculture in Krakow - Faculty of Environmental Engineering and Land Surveying, Poland821
- 104. UPDATING OF THE NAVIGATION CHARTS WITH REMOTE SENSING TECHNIQUES**, Marek Dobek, Marek Mroz, Adam Cieccko, Air Force Academy Poland, Poland829
- 105. USING FIT-FOR-PURPOSE METHODS FOR COLLECTING DATA REGARDING CHANGES IN THE URBAN ENVIRONMENT**, Assoc. Prof. Dr. Eng. Ana-Cornelia Badea, Prof. Dr. Eng. Gheorghe Badea, PhD Student Eng. Andreea Iliescu-Cremeneanu, Lect. Dr. Eng. Doina Vasilca, Technical University of Civil Engineering - Faculty of Geodesy, Romania.....837
- 106. VARIABLE RATE NITROGEN APPLICATION ON WINTER WHEAT FIELDS IN CENTRAL EUROPE CONDITION: IMPACT ON QUALITATIVE PARAMETERS OF GRAIN AND CONTENT OF NITROGEN IN PLANT**, Jakub Elbl, Wojtech Lukas, Jan Hladky, Jindrich Kynicky, Martin Brtnicky, Mendel Univerzity in Brno, Czech Republic.....845
- 107. VISUALIZATION AND SPATIAL ANALYSIS OF OPEN DATA FOR EVACUATION PLANNING - PILOT STUDY OF THE DUKOVANY NUCLEAR POWER PLANT (CZECH REPUBLIC)**, Jan Russnak, Lukas Herman, Masaryk University, Czech Republic853
- 108. WEBAPP FOR HIGHLIGHT CHANGES DUE TO NATURAL DISASTERS**, Assoc. Prof. Dr. Eng. Ana-Cornelia Badea, Prof. Dr. Eng. Gheorghe Badea, , PhD Student Eng. Andreea Iliescu-Cremeneanu, Lect. Dr. Eng. Doina Vasilca, Technical University of Civil Engineering - Faculty of Geodesy, Romania861
- 109. WHAT PATTERN(S) FOR THE URBAN SPRAWL OF THE POST-SOCIALIST ROMANIAN CITIES?**, Alexandra SANDU , Octavian GROZA, University Lumiere Lyon 2, France867