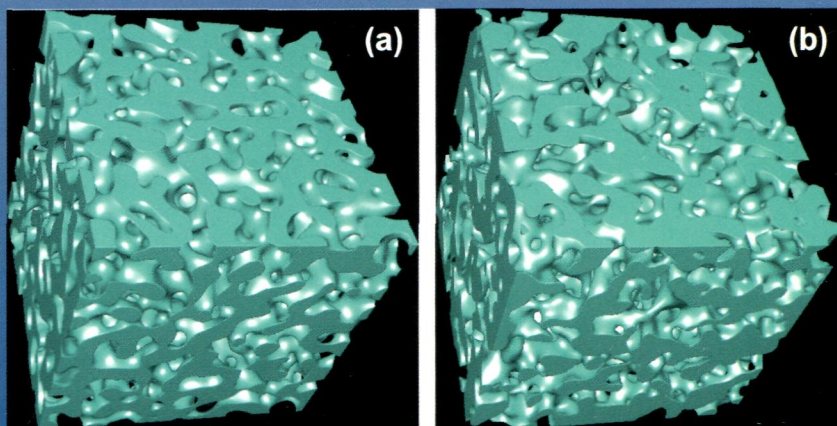
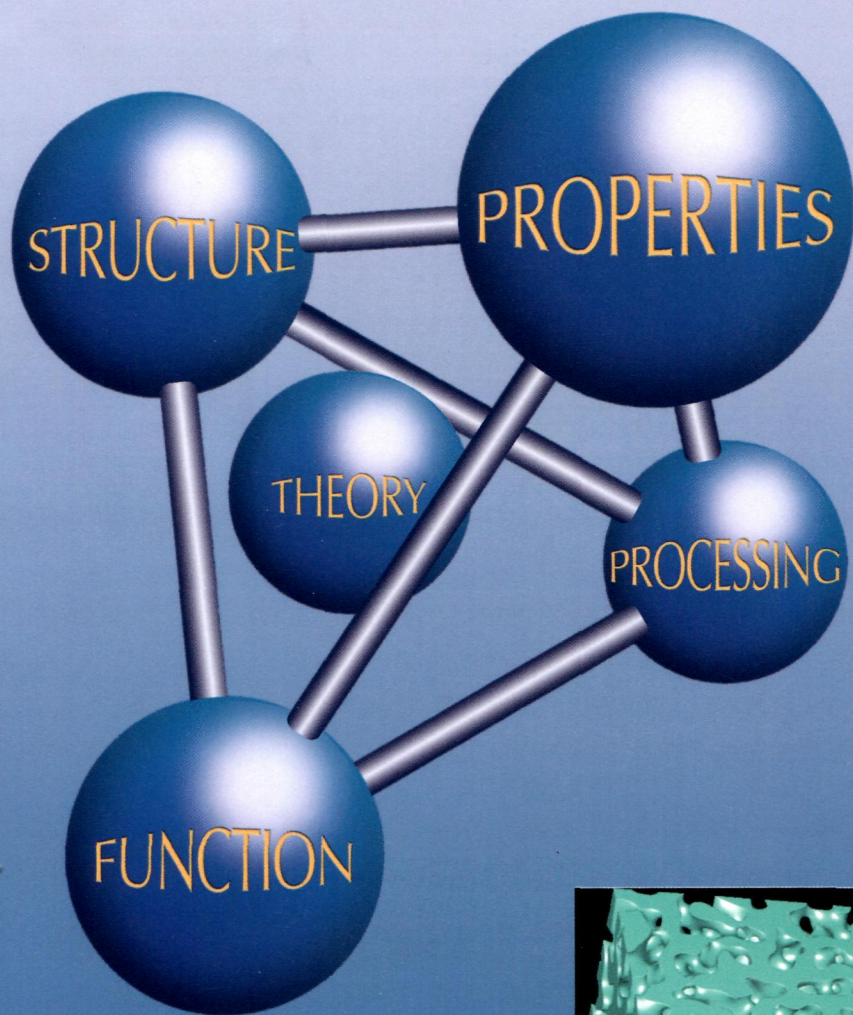




ELSEVIER

Acta MATERIALIA



- K. Loeffel, L. Anand and Z. M. Gaseem 399 On modeling the oxidation of high-temperature alloys
- L. L. Li, P. Zhang, Z. J. Zhang and Z. F. Zhang 425 Effect of crystallographic orientation and grain boundary character on fatigue cracking behaviors of coaxial copper bicrystals
- K. Y. Xie, S. Shrestha, Y. Cao, P. J. Felfer, Y. Wang, X. Liao, J. M. Cairney and S. P. Ringer 439 The effect of pre-existing defects on the strength and deformation behavior of α -Fe nanopillars
- H. Liu, Y. Gao, J. Z. Liu, Y. M. Zhu, Y. Wang and J. F. Nie 453 A simulation study of the shape of β' precipitates in Mg–Y and Mg–Gd alloys
- H. Y. Xiao, Y. Zhang and W. J. Weber 467 Thermodynamic properties of $Ce_xTh_{1-x}O_2$ solid solution from first-principles calculations
- T.-Y. Zhang and H. Ren 477 Solute concentrations and strains in nanograined materials
- D. R. Steinmetz, T. Jäpel, B. Wietbrock, P. Eisenlohr, I. Gutierrez-Urrutia, A. Saeed–Akbari, T. Hickel, F. Roters and D. Raabe 494 Revealing the strain-hardening behavior of twinning-induced plasticity steels: Theory, simulations, experiments
- E. Bertrand, P. Castany and T. Gloriant 511 Investigation of the martensitic transformation and the damping behavior of a superelastic Ti–Ta–Nb alloy
- Y.-U. Heo, Y.-K. Kim, J.-S. Kim and J.-K. Kim 519 Phase transformation of Cu precipitates from bcc to fcc in Fe–3Si–2Cu alloy
- R. Strassberg, L. Klinger, Y. Kauffmann and E. Rabkin 529 Grain growth inhibition in thin nanocrystalline Au films by grain boundary diffusion and oxidation of Ti
- N. Lambricht, T. Pardoen and S. Yunus 540 Giant stretchability of thin gold films on rough elastomeric substrates
- X. L. Huang, Y. Yang and J. Ding 548 Epitaxial growth of γ -Fe₂O₃ thin films on MgO substrates by pulsed laser deposition and their properties
- J.-B. Seol, J. E. Jung, Y. W. Jang and C. G. Park 558 Influence of carbon content on the microstructure, martensitic transformation and mechanical properties in austenite/ ϵ -martensite dual-phase Fe–Mn–C steels
- M. Shinozaki and T. W. Clyne 579 A methodology, based on sintering-induced stiffening, for prediction of the spallation lifetime of plasma-sprayed coatings

[continued on inside back cover]

Available online at www.sciencedirect.com

SciVerse ScienceDirect



1359-6454(201301)61:2;1-5

Acta mater. is Indexed/Abstracted in: Appl. Mech. Rev.; Res. Alert; Chem. Abstr. Serv.; Curr. Cont./Phys. Chem. Earth Sci.; Curr. Cont./ Engng Tech. Appl. Sci.; Ed. Metals Abstr.; Engng Ind.; IBZ & IBR; INSPEC Data.; Metals Abstr.; PASCAL-CNRS Data.; Curr. Cont. Sci. Cit. Ind.; Curr. Cont. SCISEARCH Data.; SSSA/CISA/ECA/ISMEC; MSCI; Also covered in the abstract and citation database SciVerse Scopus®. Full text available on SciVerse ScienceDirect®.

ISSN 1359-6454

[CONTENTS—continued from outside back cover]

- C.-F. Li and Z.-Q. Liu 589 Microstructure and growth mechanism of tin whiskers on RESn_3 compounds
- J. Pfetzinger-Micklich, C. Somsen, A. Dlouhy, C. Begau, A. Hartmaier, M.F.-X. Wagner and G. Eggeler 602 On the crystallographic anisotropy of nanoindentation in pseudoelastic NiTi
- Y. B. Bolkhovityanov, A. S. Deryabin, A. K. Gutakovskii and L. V. Sokolov 617 Mechanism of induced nucleation of misfit dislocations in the Ge-on-Si(0 0 1) system and its role in the formation of the core structure of edge misfit dislocations
- O. Hezko, L. Straka and H. Seiner 622 Different microstructures of mobile twin boundaries in 10 M modulated Ni–Mn–Ga martensite
- B. Jóni, E. Schaffler, M. Zehetbauer, G. Tichy and T. Ungár 632 Correlation between the microstructure studied by X-ray line profile analysis and the strength of high-pressure-torsion processed Nb and Ta
- S. Dosta, M. Couto and J. M. Guilemany 643 Cold spray deposition of a WC-25Co cermet onto Al7075-T6 and carbon steel substrates
- T. Mánik and B. Holmedal 653 On the criterion for compensation to avoid elastic–plastic transients during strain rate change tests
- Y. Zhong, A. Saengdeejing, L. Kecskes, B. Klotz and Z.-K. Liu 660 Experimental and computational studies of the Cu–Hf binary system
- N. T. Tsou, J. E. Huber and A. C. F. Cocks 670 Evolution of compatible laminate domain structures in ferroelectric single crystals
- R. Piao, H.-G. Lee and Y.-B. Kang 683 Experimental investigation of phase equilibria and thermodynamic modeling of the CaO–Al₂O₃–CaS and the CaO–SiO₂–CaS oxysulfide systems
- R. Wei, M. Enomoto, R. Hadian, H. S. Zurob and G. R. Purdy 697 Growth of austenite from as-quenched martensite during intercritical annealing in an Fe–0.1C–3Mn–1.5Si alloy
- S. Cho, K. Kikuchi, T. Miyazaki, A. Kawasaki, Y. Arami and J. F. Silvain 708 Epitaxial growth of chromium carbide nanostructures on multiwalled carbon nanotubes (MWCNTs) in MWCNT–copper composites