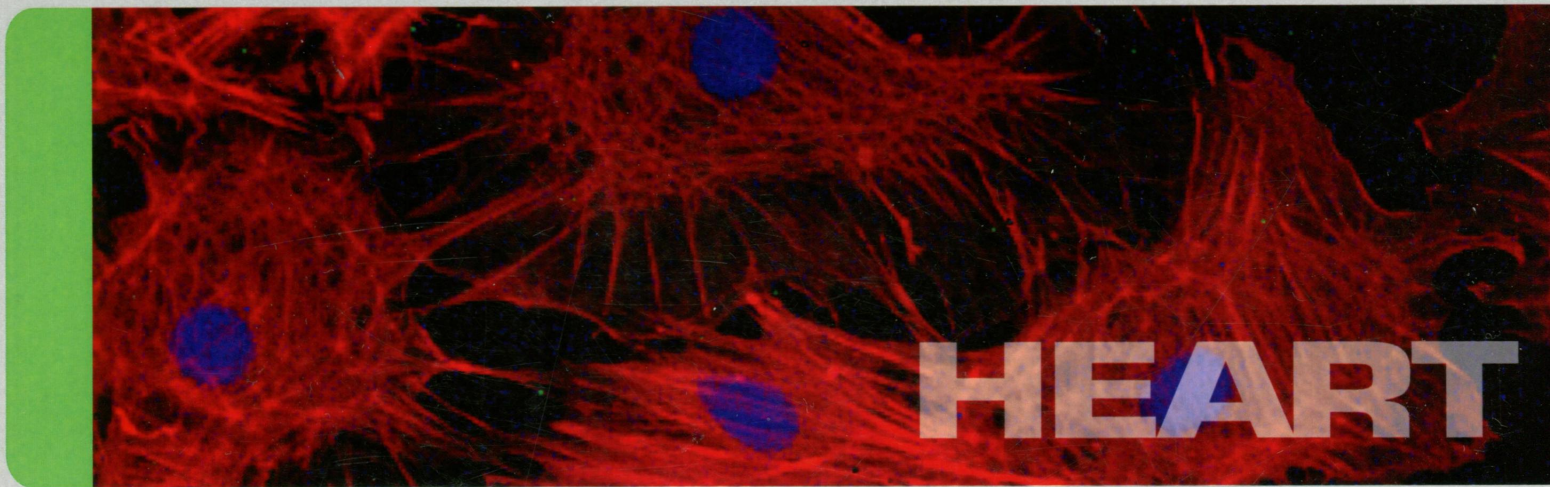


AA 47/jp 1
AMERICAN JOURNAL OF
PHYSIOLOGY[®]

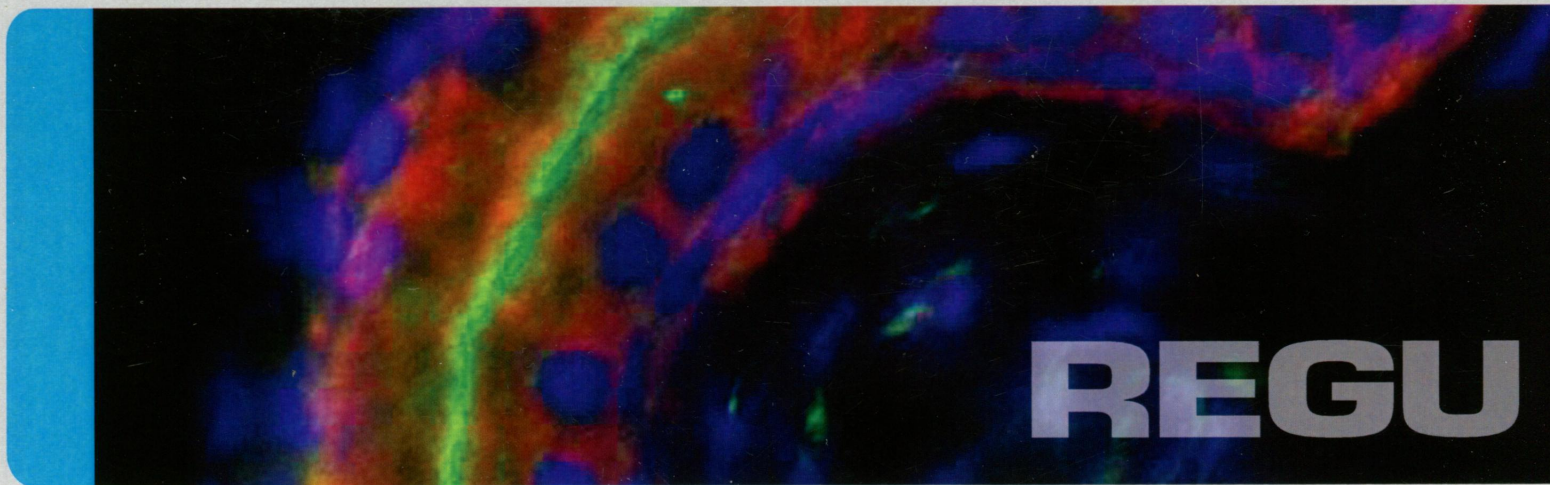
volume 307

no. 1

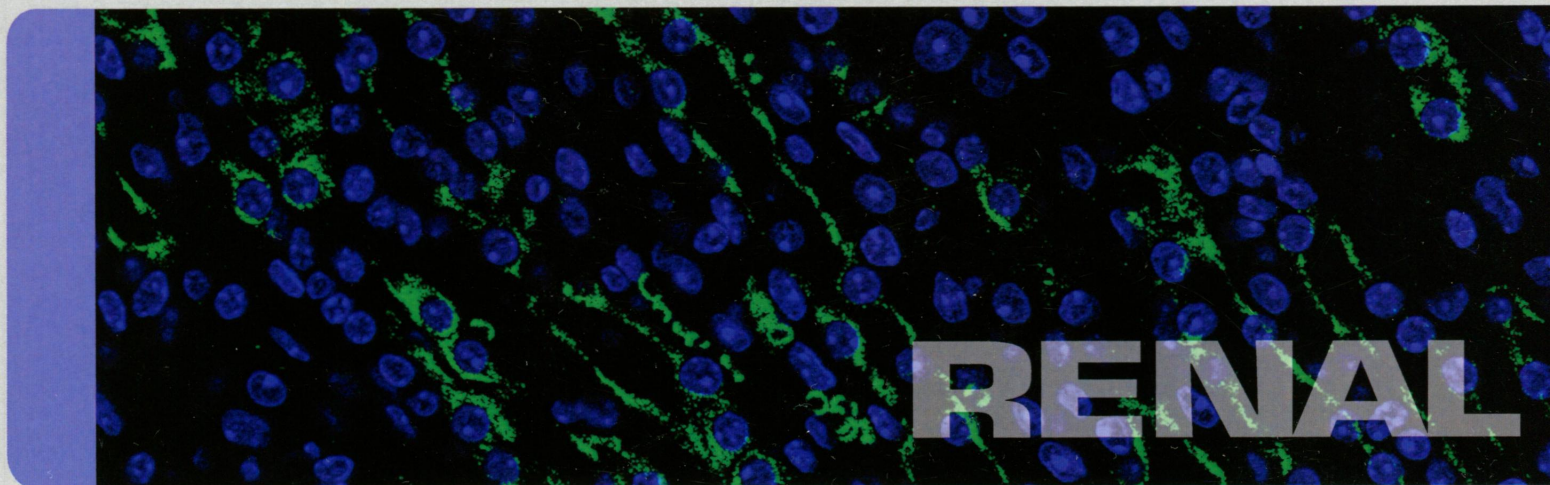
July 2014



HEART



REGU



RENAL

2 of 2

PUBLISHED BY THE AMERICAN PHYSIOLOGICAL SOCIETY

American Journal of Physiology- Heart and Circulatory Physiology

July 1, 2014

CALL FOR PAPERS Mitochondria in Cardiovascular Physiology and Disease

Physiological and structural differences in spatially distinct subpopulations of cardiac mitochondria: influence of cardiac pathologies (**Review**)
J. M. Hollander, D. Thapa, and D. L. Shepherd H1

VASCULAR BIOLOGY AND MICROCIRCULATION

Side-specific mechanical properties of valve endothelial cells
M. Miragoli, M. H. Yacoub, I. El-Hamamsy, J. L. Sanchez-Alonso, A. Moshkov, N. Mongkoldhumrongkul, M. Padala, S. Paramagurunathan, P. Sarathchandra, Y. E. Korchev, J. Gorelik, and A. H. Chester H15

The vascular renin-angiotensin system contributes to blunted vasodilation induced by transient high pressure in human adipose microvessels
M. J. Durand, S. A. Phillips, M. E. Widlansky, M. F. Otterson, and D. D. Gutterman H25

The contribution of K⁺ channels to human thoracic duct contractility
N. Telinius, S. Kim, H. Pilegaard, E. Pahle, J. Nielsen, V. Hjortdal, C. Aalkjaer, and D. B. Boedtkjer H33

Enhanced permeability responses to inflammation in streptozotocin-induced diabetic rat venules: Rho-mediated alterations of actin cytoskeleton and VE-cadherin
D. Yuan, S. Xu, and P. He H44

ENERGETICS AND METABOLISM

Functional deficiencies of subsarcolemmal mitochondria in the type 2 diabetic human heart
T. L. Croston, D. Thapa, A. A. Holden, K. J. Tveter, S. E. Lewis, D. L. Shepherd, C. E. Nichols, D. M. Long, I. M. Olfert, R. Jagannathan, and J. M. Hollander H54

SIGNALING AND STRESS RESPONSE

G_i proteins mediate activation of the canonical hedgehog pathway in the myocardium
C. J. Carbe, L. Cheng, S. Addya, J. I. Gold, E. Gao, W. J. Koch, and N. A. Riobo H66

CARDIAC EXCITATION AND CONTRACTION

The role of dye affinity in optical measurements of Ca_i²⁺ transients in cardiac muscle
W. Kong and V. G. Fast H73

INTEGRATIVE CARDIOVASCULAR PHYSIOLOGY AND PATHOPHYSIOLOGY

- An electrocardiographic sign of ischemic preconditioning (**Translational Physiology**)
L. P. B. Meijs, L. Galeotti, E. P. Pueyo, D. Romero, R. B. Jennings, M. Ringborn, S. G. Warren, G. S. Wagner, and D. G. Strauss H80
- Dystrophin proteolysis: a potential target for MMP-2 and its prevention by ischemic preconditioning
B. Buchholz, V. Perez, N. Siachoque, V. Miksztowicz, G. Berg, M. Rodríguez, M. Donato, and R. J. Gelpi H88
- Validation of pulse rate variability as a surrogate for heart rate variability in chronically instrumented rabbits
P. R. Pellegrino, A. M. Schiller, and I. H. Zucker H97
- Abnormal spirometry after the Fontan procedure is common and associated with impaired aerobic capacity
A. R. Opatowsky, M. J. Landzberg, M. G. Earing, F. M. Wu, J. K. Triedman, A. Casey, D. A. Ericson, D. Systrom, S. M. Paridon, and J. Rhodes H110

CORRIGENDA

- Corrigendum for Liu J et al. Volume 306/75, May 15, 2014, p. H1385–H1397. H118
- Corrigendum for Adamson RH et al. Volume 306/75, April 1, 2014, p. H1011–H1017. H120

July 15, 2014

PERSPECTIVES

- More in vivo experimentation is needed in cardiovascular physiology
W. G. Wier H121

CALL FOR PAPERS

Cardiovascular and Cerebrovascular Aging—New Mechanisms and Insights

- Assessing cerebrovascular autoregulation from critical closing pressure and resistance area product during upright posture in aging and hypertension
A. D. Robertson, H. Edgell, and R. L. Hughson H124

VASCULAR BIOLOGY AND MICROCIRCULATION

- Maternal nutrient restriction during pregnancy impairs an endothelium-derived hyperpolarizing factor-like pathway in sheep fetal coronary arteries
P. Shukla, S. Ghatta, N. Dubey, C. O. Lemley, M. L. Johnson, A. Modgil, K. Vonnahme, J. S. Caton, L. P. Reynolds, C. Sun, and S. T. O'Rourke H134
- Opposing changes in thoracic and abdominal aortic biomechanical properties in rodent models of vascular calcification and hypertension
O. Z. Ameer, I. M. Salman, A. P. Avolio, J. K. Phillips, and M. Butlin H143
- Cell-generated traction forces and the resulting matrix deformation modulate microvascular alignment and growth during angiogenesis
C. J. Underwood, L. T. Edgar, J. B. Hoying, and J. A. Weiss H152
- Obesity increases inflammation and impairs lymphatic function in a mouse model of lymphedema
I. L. Savetsky, J. S. Torrisi, D. A. Cuzzzone, S. Ghanta, N. J. Albano, J. C. Gardenier, W. J. Joseph, and B. J. Mehrara H165
- A method for noninvasive longitudinal measurements of $[Ca^{2+}]$ in arterioles of hypertensive optical biosensor mice (**Innovative Methodology**)
J. R. H. Mauban, S. T. Fairfax, M. A. Rizzo, J. Zhang, and W. G. Wier H173

CARDIOVASCULAR NEUROHORMONAL REGULATION

- Overexpression of angiotensin-converting enzyme 2 attenuates tonically active glutamatergic input to the rostral ventrolateral medulla in hypertensive rats
Y.-K. Wang, D. Shen, Q. Hao, Q. Yu, Z.-T. Wu, Y. Deng, Y.-F. Chen, W.-J. Yuan, Q.-K. Hu, D.-F. Su, and W.-Z. Wang H182
- Estrogen regulation of the brain renin-angiotensin system in protection against angiotensin II-induced sensitization of hypertension
B. Xue, Z. Zhang, T. G. Beltz, F. Guo, M. Hay, and A. K. Johnson H191

CARDIAC EXCITATION AND CONTRACTION

Ca²⁺/calmodulin-dependent protein kinase II increases the susceptibility to the arrhythmogenic action potential alternans in spontaneously hypertensive rats

H. Mitsuyma, H. Yokoshiki, M. Watanabe, K. Mizukami, J. Shimokawa, and H. Tsutsui

H199

INTEGRATIVE CARDIOVASCULAR PHYSIOLOGY AND PATHOPHYSIOLOGY

Sympathetic predominance is associated with impaired endothelial progenitor cells and tunneling nanotubes in controlled-hypertensive patients

E. M. V. de Cavanagh, S. A. González, F. Inserra, P. Forcada, C. Castellaro, J. Chiabaut-Svane, S. Obregón, M. J. Casarini, P. Kempny, and C. Kotliar

H207

MicroRNAs associated with ischemia-reperfusion injury and cardioprotection by ischemic pre- and postconditioning: protectomiRs

Z. V. Varga, Ágnes Zvara, N. Faragó, G. F. Kocsis, M. Pipicz, R. Gáspár, P. Bencsik, A. Görbe, C. Csonka, L. G. Puskás, T. Thum, T. Csont, and P. Ferdinandy

H216

Coronary responses to cold air inhalation following afferent and efferent blockade

M. D. Muller, Z. Gao, P. M. McQuillan, U. A. Leuenberger, and L. I. Sinoway

H228

Systemic vascular effects of acute electrical baroreflex stimulation

S. Burgoyne, D. Georgakopoulos, I. Belenkie, and J. V. Tyberg

H236

Exercise training improves functional sympatholysis in spontaneously hypertensive rats through a nitric oxide-dependent mechanism

M. Mizuno, G. A. Iwamoto, W. Vongpatanasin, J. H. Mitchell, and S. A. Smith

H242

RAPID REPORTS

HDAC6 contributes to pathological responses of heart and skeletal muscle to chronic angiotensin-II signaling

K. M. Demos-Davies, B. S. Ferguson, M. A. Cavin, J. H. Mahaffey, S. M. Williams, J. I. Spiltoir, K. B. Schuetze, T. R. Horn, B. Chen, C. Ferrara, B. Scellini, N. Piroddi, C. Tesi, C. Poggesi, M. Y. Jeong, and T. A. McKinsey

H252

Physiological interdependence of the cardiovascular and postural control systems under orthostatic stress

A. Garg, D. Xu, A. Laurin, and A. P. Blaber

H259

American Journal of Physiology- Regulatory, Integrative and Comparative Physiology

July 1, 2014

CALL FOR PAPERS

Integrative and Translational Physiology: Integrative Aspects of Energy Homeostasis and Metabolic Diseases

Insulin effects on glucose tolerance, hypermetabolic response, and circadian-metabolic protein expression in a rat burn and disuse model

H. F. Pidcoke, L. A. Baer, X. Wu, S. E. Wolf, J. K. Aden, and C. E. Wade

R1

EDITORIAL FOCUS

Hypoxic signaling: some organs are more equal than others. Focus on "Differential HIF and NOS responses to acute anemia: defining organ-specific hemoglobin thresholds for tissue hypoxia"

R. G. Evans

R11

RESEARCH

NEURAL CONTROL

Mercaptoacetate and fatty acids exert direct and antagonistic effects on nodose neurons via GPR40 fatty acid receptors

R. A. Darling, H. Zhao, D. Kinch, A.-J. Li, S. M. Simasko, and S. Ritter

R35

- Regulation of the chemosensory control of breathing by Kölliker-Fuse neurons
R. S. Damasceno, A. C. Takakura, and T. S. Moreira R57
- Role of prostaglandins in determining the increased cardiac sympathetic nerve activity in ovine sepsis
L. C. Booth, R. Ramchandra, P. Calzavacca, and C. N. May R75
- Altering the sex determination pathway in *Drosophila* fat body modifies sex-specific stress responses
K. J. Argue and W. S. Neckameyer R82
- Mindfulness meditation lowers muscle sympathetic nerve activity and blood pressure in African-American males with chronic kidney disease
J. Park, R. H. Lyles, and S. Bauer-Wu R93

FLUID AND ELECTROLYTE HOMEOSTASIS

- Gene expression and localization of two types of AQP5 in *Xenopus tropicalis* under hydration and dehydration
Y. Shibata, T. Sano, N. Tsuchiya, R. Okada, H. Mochida, S. Tanaka, and M. Suzuki R44

PHYSICAL ACTIVITY AND INACTIVITY

- Metabolomics approach to assessing plasma 13- and 9-hydroxy-octadecadienoic acid and linoleic acid metabolite responses to 75-km cycling
D. C. Nieman, R. A. Shanely, B. Luo, M. P. Meaney, D. A. Dew, and K. L. Pappan R68

OBESITY, DIABETES AND ENERGY HOMEOSTASIS

- Oxidative stress and altered lipid homeostasis in the programming of offspring fatty liver by maternal obesity
M. Z. Alfaradhi, D. S. Fernandez-Twinn, M. S. Martin-Gronert, B. Musial, A. Fowden, and S. E. Ozanne R26
- Mercaptoacetate and fatty acids exert direct and antagonistic effects on nodose neurons via GPR40 fatty acid receptors
R. A. Darling, H. Zhao, D. Kinch, A.-J. Li, S. M. Simasko, and S. Ritter R35

CARDIOVASCULAR AND RENAL INTEGRATION

- Differential HIF and NOS responses to acute anemia: defining organ-specific hemoglobin thresholds for tissue hypoxia
A. K. Y. Tsui, P. A. Marsden, C. D. Mazer, J. G. Sled, K. M. Lee, R. M. Henkelman, L. S. Cahill, Y.-Q. Zhou, N. Chan, E. Liu, and G. M. T. Hare R13
- Role of prostaglandins in determining the increased cardiac sympathetic nerve activity in ovine sepsis
L. C. Booth, R. Ramchandra, P. Calzavacca, and C. N. May R75

RESPIRATION

- Regulation of the chemosensory control of breathing by Kölliker-Fuse neurons
R. S. Damasceno, A. C. Takakura, and T. S. Moreira R57

HORMONES, REPRODUCTION AND DEVELOPMENT

- Gene expression and localization of two types of AQP5 in *Xenopus tropicalis* under hydration and dehydration
Y. Shibata, T. Sano, N. Tsuchiya, R. Okada, H. Mochida, S. Tanaka, and M. Suzuki R44

July 15, 2014

REVIEW

- Cold-activated brown adipose tissue in human adults: methodological issues
A. A. J. J. van der Lans, R. Wierds, M. J. Vosselman, P. Schrauwen, B. Brans, and W. D. van Marken Lichtenbelt R103

CALL FOR PAPERS
Central Control of Fluid and Electrolytes

Roux-en-Y gastric bypass does not affect daily water intake or the drinking response to dipsogenic stimuli in rats

A. Marshall, J. Santollo, C. Corteville, T. A. Lutz, and D. Daniels

R114

RESEARCH

NEURAL CONTROL

The medial preoptic nucleus as a site of the thermogenic and metabolic actions of melanotan II in male rats

B. Monge-Roffarello, S. M. Labbe, C. Lenglos, A. Caron, D. Lanfray, P. Samson, and D. Richard

R158

Chronic subordination stress phase advances adrenal and anterior pituitary clock gene rhythms

M. Razzoli, C. Karsten, J. M. Yoder, A. Bartolomucci, and W. C. Engeland

R198

Low-dose B-type natriuretic peptide raises cardiac sympathetic nerve activity in sheep

C. J. Charles, D. L. Jardine, M. T. Rademaker, and A. M. Richards

R206

Elevated corticosterone in the dorsal hindbrain increases plasma norepinephrine and neuropeptide Y, and recruits a vasopressin response to stress

D. L. Daubert, B. M. Looney, R. R. Clifton, J. N. Cho, and D. A. Scheuer

R212

A role of nesfatin-1/NucB2 in dehydration-induced anorexia

M. Yoshimura, T. Matsuura, J. Ohkubo, T. Maruyama, T. Ishikura, H. Hashimoto, T. Kakuma, M. Mori, and Y. Ueta

R225

FLUID AND ELECTROLYTE HOMEOSTASIS

A role of nesfatin-1/NucB2 in dehydration-induced anorexia

M. Yoshimura, T. Matsuura, J. Ohkubo, T. Maruyama, T. Ishikura, H. Hashimoto, T. Kakuma, M. Mori, and Y. Ueta

R225

OBESITY, DIABETES AND ENERGY HOMEOSTASIS

The medial preoptic nucleus as a site of the thermogenic and metabolic actions of melanotan II in male rats

B. Monge-Roffarello, S. M. Labbe, C. Lenglos, A. Caron, D. Lanfray, P. Samson, and D. Richard

R158

Vagal afferents are not necessary for the satiety effect of the gut lipid messenger oleylethanolamide

E. K. Azari, D. Ramachandran, S. Weibel, M. Arnold, A. Romano, S. Gaetani, W. Langhans, and A. Mansouri

R167

Decreased complexity of glucose dynamics in diabetes: evidence from multiscale entropy analysis of continuous glucose monitoring system data

J.-L. Chen (陳錦龍), P.-F. Chen (陳品汎), and H.-M. Wang (王鴻銘)

R179

Time window-dependent effect of perinatal maternal protein restriction on insulin sensitivity and energy substrate oxidation in adult male offspring

A. M. Agnoux, J.-P. Antignac, G. Simard, G. Poupeau, D. Darmaun, P. Parnet, and M.-C. Alexandre-Gouabau

R184

Chronic subordination stress phase advances adrenal and anterior pituitary clock gene rhythms

M. Razzoli, C. Karsten, J. M. Yoder, A. Bartolomucci, and W. C. Engeland

R198

CARDIOVASCULAR AND RENAL INTEGRATION

The day/night proteome in the murine heart

P. Podobed, W. G. Pyle, S. Ackloo, F. J. Alibhai, E. V. Tsimakouridze, W. F. Ratcliffe, A. Mackay, J. Simpson, D. C. Wright, G. M. Kirby, M. E. Young, and T. A. Martino

R121

Altered L-type Ca²⁺ channel activity contributes to exacerbated hypoperfusion and mortality in smooth muscle cell BK channel-deficient septic mice

H. Xu, H. Garver, R. Fernandes, J. J. Galligan, and G. D. Fink

R138

Female sex hormones protect against salt-sensitive hypertension but not essential hypertension

K. N. Brinson, O. Rafikova, and J. C. Sullivan

R149

Low-dose B-type natriuretic peptide raises cardiac sympathetic nerve activity in sheep

C. J. Charles, D. L. Jardine, M. T. Rademaker, and A. M. Richards

R206

HORMONES, REPRODUCTION AND DEVELOPMENT

Female sex hormones protect against salt-sensitive hypertension but not essential hypertension

K. N. Brinson, O. Rafikova, and J. C. Sullivan

R149

July 1, 2014

REVIEW

pH-responsive, gluconeogenic renal epithelial LLC-PK₁-FBPase⁺ cells: a versatile in vitro model to study renal proximal tubule metabolism and function

N. P. Curthoys and G. Gstraunthaler

F1

EDITORIAL FOCUS

New insights into the determinants of serum Na⁺ and the risk for dysnatremias

M. H. Rosner

F12

Role of 2',3'-cyclic nucleotide 3'-phosphodiesterase in the renal 2',3'-cAMP-adenosine pathway
E. K. Jackson, D. G. Gillespie, Z. Mi, D. Cheng, R. Bansal, K. Janesko-Feldman, and P. M. Kochanek

F14

COX-2 mediates angiotensin II-induced (pro)renin receptor expression in the rat renal medulla
F. Wang, X. Lu, K. Peng, L. Zhou, C. Li, W. Wang, X. Yu, D. E. Kohan, S.-F. Zhu, and T. Yang

F25

High-salt diet blunts renal autoregulation by a reactive oxygen species-dependent mechanism
R. C. Fellner, A. K. Cook, P. M. O'Connor, S. Zhang, D. M. Pollock, and E. W. Inscho

F33

Syncytial communication in descending vasa recta includes myoendothelial coupling
Z. Zhang, K. Payne, and T. L. Pallone

F41

Effects of acid challenges on type 2 angiotensin II receptor-sensitive ammonia production by the proximal tubule

G. T. Nagami, A. K. Plumer, R. M. Beyda, and O. Schachter

F53

Sodium and potassium regulate endothelial phospholipase C- γ and Bmx
W.-Z. Ying, K. J. Aaron, and P. W. Sanders

F58

Role of medullary progenitor cells in epithelial cell migration and proliferation

D. Chen, Z. Chen, Y. Zhang, C. Park, A. Al-Omari, and G. W. Moeckel

F64

Relevant role of PKG in the progression of fibrosis induced by TNF-like weak inducer of apoptosis

P. Martín, I. Mora, M. A. Cortes, L. Calleros, A. García-Jerez, A. Ortiz, M. Rodríguez-Puyol, D. Rodríguez-Puyol, and G. Olmos

F75

Cytochalasin E alters the cytoskeleton and decreases ENaC activity in *Xenopus* 2F3 cells

M. S. Reifenberger, L. Yu, H.-F. Bao, B. J. Duke, B.-C. Liu, H.-P. Ma, A. A. Alli, D. C. Eaton, and A. A. Alli

F86

Novel mechanisms of Na⁺ retention in obesity: phosphorylation of NKCC2 and regulation of SPAK/OSR1 by AMPK

M. Davies, S. A. Fraser, S. Galic, S.-W. Choy, M. Katerelos, K. Gleich, B. E. Kemp, P. F. Mount, and D. A. Power

F96

Mutation of a single threonine in the cytoplasmic NH₂ terminus disrupts trafficking of renal betaine-GABA transporter 1 during hypertonic stress

E. S. Schweikhard, S. A. Kempson, C. Ziegler, and B. C. Burckhardt

F107

INNOVATIVE METHODOLOGY

First D₁-like receptor PET imaging of the rat and primate kidney: implications for human disease monitoring

M. L. Granda, F. A. Schroeder, R. H. J. Borra, N. Schauer, E. Aisaborhale, A. R. Guimaraes, and J. M. Hooker

F116

July 15, 2014

**CALL FOR PAPERS
Novel Therapeutics in Renal Diseases**

(Review) Circulating bilirubin and defense against kidney disease and cardiovascular mortality: mechanisms contributing to protection in clinical investigations

A.-C. Boon, A. C. Bulmer, J. S. Coombes, and R. G. Fasset

F123

CALL FOR PAPERS

Renal Hemodynamics: Integrating With the Nephron and Beyond

Effects of NKCC2 isoform regulation on NaCl transport in thick ascending limb and macula densa: a modeling study

A. Edwards, H. Castrop, K. Laghmani, V. Vallon, and A. T. Layton

F137

EDITORIAL FOCUS

The diabetic proximal tubule: part of the problem, and part of the solution?

A. M. Weinstein

F147

Assessment of renal functional maturation and injury in preterm neonates during the first month of life

L. Gubhaju, M. R. Sutherland, R. S. C. Horne, A. Medhurst, A. L. Kent, A. Ramsden, L. Moore, G. Singh, W. E. Hoy, and M. J. Black

F149

RhoA/Rho kinase mediates TGF- β_1 -induced kidney myofibroblast activation through Poldip2/Nox4-derived reactive oxygen species

N. Manickam, M. Patel, K. K. Griendling, Y. Gorin, and J. L. Barnes

F159

Macroscopic electrical propagation in the guinea pig urinary bladder

F. T. Hammad, B. Stephen, L. Lubbad, J. F. B. Morrison, and W. J. Lammers

F172

Semaphorin 3A inactivation suppresses ischemia-reperfusion-induced inflammation and acute kidney injury

P. Ranganathan, C. Jayakumar, R. Mohamed, N. L. Weintraub, and G. Ramesh

F183

Effects of biomechanical forces on signaling in the cortical collecting duct (CCD)

R. Carrisoza-Gaytan, Y. Liu, D. Flores, C. Else, H. G. Lee, G. Rhodes,

R. M. Sandoval, T. R. Kleyman, F. Y.-I Lee, B. Molitoris, L. M. Sailin, and R. Rohatgi

F195

Accelerated receptor shedding inhibits kidney injury molecule-1 (KIM-1)-mediated efferocytosis

R. Gandhi, J. Yi, J. Ha, H. Shi, O. Ismail, S. Nathoo, J. V. Bonventre, X. Zhang, and L. Gunaratnam

F205

INNOVATIVE METHODOLOGY

Mechanisms of AT_{1a} receptor-mediated uptake of angiotensin II by proximal tubule cells: a novel role of the multiligand endocytic receptor megalin

X. C. Li and J. L. Zhuo

F222

Combination of bladder ultrasonography and novel cystometry method in mice reveals rapid decrease in bladder capacity and compliance in LPS-induced cystitis

K. Takezawa, M. Kondo, H. Kiuchi, T. Soda, T. Takao, Y. Miyagawa, A. Tsujimura,

N. Nonomura, and S. Shimada

F234