

FM
AG0/6

SPECIAL ISSUE
Plant Cell Walls

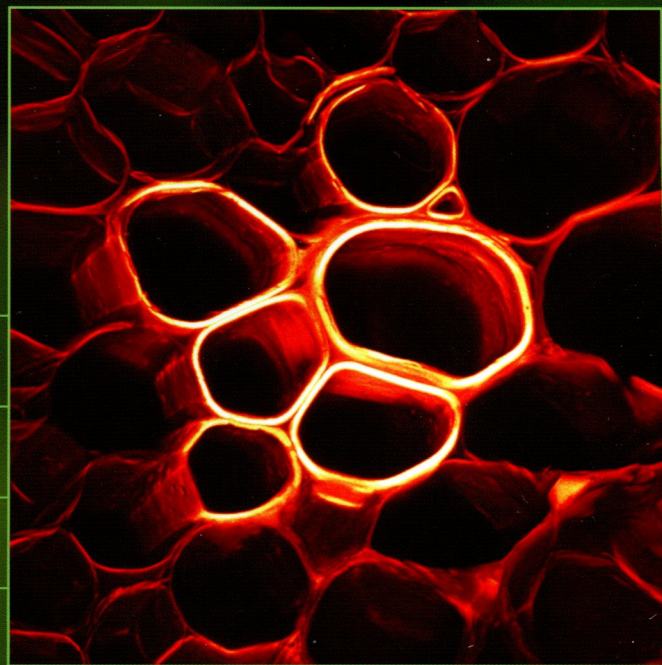
ANNALS OF BOTANY

Founded 1887

Volume 114

Number 6

October 2014



www.aob.oxfordjournals.org

ISSN 0305-7364 (PRINT)
ISSN 1095-8290 (ONLINE)

ANNALS OF BOTANY

Founded 1887

Volume 114 Number 6 October 2014

ContentSnapshots

i

PREFACE

Popper, Z. A., Ralet, M.-C. and Domozych, D. S. Plant and algal cell walls: diversity and functionality 1043

ARTICLES

Krishnamoorthy, P., Sanchez-Rodriguez, C., Heilmann, I. and Persson, S. Regulatory roles of phosphoinositides in membrane trafficking and their potential impact on cell-wall synthesis and re-modelling 1049

Bashline, L., Li, S. and Gu, Y. The trafficking of the cellulose synthase complex in higher plants 1059

Lamport, D. T. A., Varnai, P. and Seal, C. E. Back to the future with the AGP-Ca²⁺ flux capacitor 1069

Hijazi, M., Roujol, D., Nguyen-Kim, H., del Rocio Cisneros Castillo, L., Saland, E., Jamet, E. and Albenne, C. Arabinogalactan protein 31 (AGP31), a putative network-forming protein in *Arabidopsis thaliana* cell walls? 1087

Ko, J.-H., Jeon, H.-W., Kim, W.-C., Kim, J.-Y. and Han, K.-H. The MYB46/MYB83-mediated transcriptional regulatory programme is a gatekeeper of secondary wall biosynthesis 1099

Rajasundaram, D., Selbig, J., Persson, S. and Klie, S. Co-ordination and divergence of cell-specific transcription and translation of genes in arabidopsis root cells 1109

Seifert, G. J., Xue, H. and Acet, T. The *Arabidopsis thaliana* FASCICLIN LIKE ARABINOGALACTAN PROTEIN 4 gene acts synergistically with abscisic acid signalling to control root growth 1125

Kozlova, L. V., Ageeva, M. V., Ibragimova, N. N. and Gorshkova, T. A. Arrangement of mixed-linkage glucan and glucuronoarabinoxylan in the cell walls of growing maize roots 1135

Larson, E. R., Domozych, D. S. and Tierney, M. L. SNARE VTI13 plays a unique role in endosomal trafficking pathways associated with the vacuole and is essential for cell wall organization and root hair growth in arabidopsis 1147

Sénéchal, F., Graff, L., Surcouf, O., Marcelo, P., Rayon, C., Bouton, S., Mareck, A., Mouille, G., Stintzi, A., Höfte, H., Lerouge, P., Schaller, A. and Pelloux, J. Arabidopsis PECTIN METHYLESTERASE17 is co-expressed with and processed by SBT3.5, a subtilisin-like serine protease 1161



Scan to view this journal
on your mobile device

Contents continued on inside back cover

OXFORD  OPEN

OXFORD
UNIVERSITY PRESS

Dumont, M., Lehner, A., Bouton, S., Kiefer-Meyer, M. C., Voxeur, A., Pelloux, J., Lerouge, P. and Mollet, J.-C. The cell wall pectic polymer rhamnogalacturonan-II is required for proper pollen tube elongation: implications of a putative sialyltransferase-like protein	1177
Quilichini, T. D., Douglas, C. J. and Samuels, A. L. New views of tapetum ultrastructure and pollen exine development in <i>Arabidopsis thaliana</i>	1189
Deniaud-Bouët, E., Kervarec, N., Michel, G., Tonon, T., Kloareg, B. and Hervé, C. Chemical and enzymatic fractionation of cell walls from Fucales: insights into the structure of the extracellular matrix of brown algae	1203
Mikkelsen, M. D., Harholt, J., Ulvskov, P., Johansen, I. E., Fangel, J. U., Doblin, M. S., Bacic, A. and Willats, W. G. T. Evidence for land plant cell wall biosynthetic mechanisms in charophyte green algae	1217
Ochs, J., LaRue, T., Tinaz, B., Yongue, C. and Domozych, D. S. The cortical cytoskeletal network and cell-wall dynamics in the unicellular charophycean green alga <i>Penium margaritaceum</i>	1237
North, H. M., Berger, A., Saez-Aguayo, S. and Ralet, M.-C. Understanding polysaccharide production and properties using seed coat mutants: future perspectives for the exploitation of natural variants	1251
da Costa, R. M. F., Lee, S. J., Allison, G. G., Hazen, S. P., Winters, A. and Bosch, M. Genotype, development and tissue-derived variation of cell-wall properties in the lignocellulosic energy crop <i>Miscanthus</i>	1265
Moore, J. P., Fangel, J. U., Willats, W. G. T. and Vivier, M. A. Pectic- β (1,4)-galactan, extensin and arabinogalactan-protein epitopes differentiate ripening stages in wine and table grape cell walls	1279
Eeckhout, S., Leroux, O., Willats, W. G. T., Popper, Z. A. and Viane, R. L. L. Comparative glycan profiling of <i>Ceratopteris richardii</i> 'C-Fern' gametophytes and sporophytes links cell-wall composition to functional specialization	1295
Hara, Y., Yokoyama, R., Osakabe, K., Toki, S. and Nishitani, K. Function of xyloglucan endotransglucosylase/hydrolases in rice	1309
Kaya, M., Sousa, A. G., Crépeau, M.-J., Sørensen, S. O. and Ralet, M.-C. Characterization of citrus pectin samples extracted under different conditions: influence of acid type and pH of extraction	1319
Buffetto, F., Ropartz, D., Zhang, X. J., Gilbert, H. J., Guillon, F. and Ralet, M.-C. Recovery and fine structure variability of RGII sub-domains in wine (<i>Vitis vinifera</i> Merlot)	1327
Engelsdorf, T. and Hamann, T. An update on receptor-like kinase involvement in the maintenance of plant cell wall integrity	1339
Ellinger, D. and Voigt, C. A. Callose biosynthesis in arabidopsis with a focus on pathogen response: what we have learned within the last decade	1349
Pielach, A., Leroux, O., Domozych, D. S., Knox, J. P. and Popper, Z. A. Arabinogalactan protein-rich cell walls, paramural deposits and ergastic globules define the hyaline bodies of rhinanthoid Orobanchaceae haustoria	1359
Paniagua, C., Posé, S., Morris, V. J., Kirby, A. R., Quesada, M. A. and Mercado, J. A. Fruit softening and pectin disassembly: an overview of nanostructural pectin modifications assessed by atomic force microscopy	1375
Zhou, L. H., Weizbauer, R. A., Singamaneni, S., Xu, F., Genin, G. M. and Pickard, B. G. Structures formed by a cell membrane-associated arabinogalactan-protein on graphite or mica alone and with Yariv phenylglycosides	1385

For more information about *Annals of Botany* please visit our website at www.aob.oxfordjournals.org

Disclaimer

Statements of fact and opinion in the articles in *Annals of Botany* are those of the respective authors and contributors and not of *Annals of Botany* Company or Oxford University Press. Neither Oxford University Press nor *Annals of Botany* Company make any representation, express or implied, in respect of the accuracy of the material in this journal and cannot accept any legal responsibility or liability for any errors or omissions that may be made. The reader should make his/her own evaluation as to the appropriateness or otherwise of any experimental technique described.