

711
BGO/PG

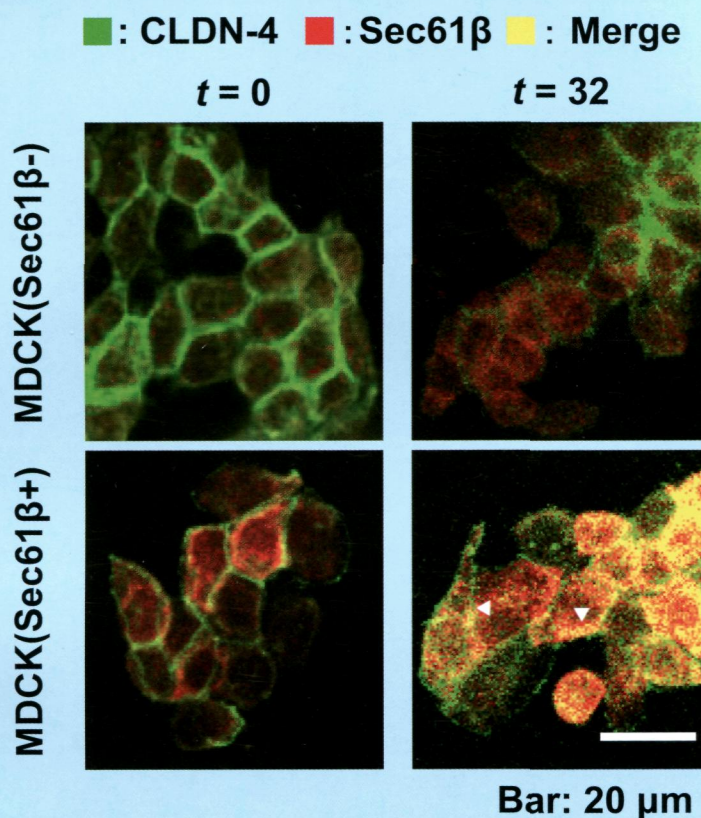
Biological and Pharmaceutical Bulletin

June 2014

BPBLEO 37 (6) 883-1080 (2014)

Vol. 37 No. 6

Biological and Pharmaceutical Bulletin succeeds to Journal of Health Science from 2012.



Cover Figure Sec61 β Regulates Barrier Functions of Tight Junction

pp. 979-986

Highlighted Paper • Meta-Analysis of UGIH Caused by SSRI+NSAIDs
(Yoshinari Oka *et al.*) pp. 947-953

Current Topics Pharmacologically Active Constituents from Plants Used
in Traditional Medicine



THE PHARMACEUTICAL SOCIETY OF JAPAN

<http://bpb.pharm.or.jp>

Biological and Pharmaceutical Bulletin

Vol. 37, No. 6 June 2014

© Copyright, 2014, by the Pharmaceutical Society of Japan.

Contents

Current Topics

Pharmacologically Active Constituents from Plants Used in Traditional Medicine

Foreword

T. Hatano 883

Search for New Type of PPAR γ Agonist-Like Anti-diabetic Compounds from Medicinal Plants

H. Matsuda, S. Nakamura, and M. Yoshikawa 884

Effects of Ashwagandha (Roots of *Withania somnifera*) on Neurodegenerative Diseases

T. Kuboyama, C. Tohda, and K. Komatsu 892

3-Monoglucuronoyl Glycyrrhretinic Acid Is a Possible Marker Compound Related to Licorice-Induced Pseudoaldosteronism

T. Makino 898

Prospecting for Bioactive Constituents from Traditional Medicinal Plants through Ethnobotanical Approaches

R. H. Gu, Y. H. Wang, B. Long, E. Kennelly, S. B. Wu, B. Liu, P. Li, and C. L. Long 903

Regular Articles

Developing Population Pharmacokinetic Parameters for High-Dose Methotrexate Therapy: Implication of Correlations among Developed Parameters for Individual Parameter Estimation Using the Bayesian Least-Squares Method

M. Watanabe, N. Fukuoka, T. Takeuchi, K. Yamaguchi, T. Motoki, H. Tanaka, S. Kosaka, and H. Houchi 916

Adenosine 3',5'-Cyclic Monophosphate Involvement in Hepatic Triacylglyceride Lipase Release from Prazosin-Stimulated Primary Cultured Rat Hepatocytes

T. Nakamura and T. Morita 922

Development and Evaluation of Optimized Sucrose Ester Stabilized Oleanolic Acid Nanosuspensions Prepared by Wet Ball Milling with Design of Experiments

W. Li, K. Ng, and P. W. S. Heng 926

Korean Red Ginseng Extract Exhibits Neuroprotective Effects through Inhibition of Apoptotic Cell Death

S. Kim, Y. Lee, and J. Cho 938

* Meta-analysis of the Risk of Upper Gastrointestinal Hemorrhage with Combination Therapy of Selective Serotonin Reuptake Inhibitors and Non-steroidal Anti-inflammatory Drugs

Y. Oka, K. Okamoto, N. Kawashita, Y. Shirakuni, and T. Takagi 947

Ameliorating Effects of HX106N, a Water-Soluble Botanical Formulation, on A β_{25-35} -Induced Memory Impairment and Oxidative Stress in Mice

D. S. Lee, J. Choi, S.-H. Kim, and S. Kim 954

Danshensu Inhibits β -Adrenergic Receptors-Mediated Cardiac Fibrosis by ROS/p38 MAPK Axis

H. Lu, A. Tian, J. Wu, C. Yang, R. Xing, P. Jia, L. Yang, Y. Zhang, X. Zheng, and Z. Li 961

X-Ray Crystallographic Structure of RNase PoI That Exhibits Anti-tumor Activity

H. Kobayashi, T. Katsutani, Y. Hara, N. Motoyoshi, T. Itagaki, F. Akita, A. Higashiura, Y. Yamada, N. Inokuchi, and M. Suzuki 968

* *Highlighted Paper selected by Editor-in-Chief*

The selection is based upon originality, scientific contributions, methodological pertinence, and composition.

Sec61 β Regulates Barrier Functions of Tight Junction through Expression of Claudin-4 in Madin–Darby Canine Kidney Cells M. Washiyama, N. Koizumi, M. Fujii, and Y. Watanabe	979
Antidepressant Activity of Astilbin: Involvement of Monoaminergic Neurotransmitters and BDNF Signal Pathway Q.-Q. Lv, W.-J. Wu, X.-L. Guo, R.-L. Liu, Y.-P. Yang, D.-S. Zhou, J.-X. Zhang, and J.-Y. Liu	987
Aortic Superoxide Production at the Early Hyperglycemic Stage in a Rat Type 2 Diabetes Model and the Effects of Pravastatin C. Kikuchi, J. Kajikuri, E. Hori, C. Nagami, T. Matsunaga, K. Kimura, and T. Itoh	996
Long-term High-Soybean Oil Feeding Alters Regulation of Body Temperature in Rats H. Tsushima, K. Yamada, D. Miyazawa, M. Mori, Y. Hashimoto, T. Ohkubo, H. Hibino, and H. Okuyama	1003
Collagen Gel Contraction Assay Using Human Bronchial Smooth Muscle Cells and Its Application for Evaluation of Inhibitory Effect of Formoterol Y. Sakota, Y. Ozawa, H. Yamashita, H. Tanaka, and N. Inagaki	1014
Papain-Like Protease (PLpro) Inhibitory Effects of Cinnamic Amides from <i>Tribulus terrestris</i> Fruits Y. H. Song, D. W. Kim, M. J. Curtis-Long, H. J. Yuk, Y. Wang, N. Zhuang, K. H. Lee, K. S. Jeon, and K. H. Park	1021
Effects of Curcumin Analogues for Inhibiting Human Prostate Cancer Cells and the Growth of Human PC-3 Prostate Xenografts in Immunodeficient Mice D.-Y. Zhou, N. Ding, J. Van Doren, X.-C. Wei, Z.-Y. Du, A. H. Conney, K. Zhang, and X. Zheng	1029
Antitumor Activity of Triterpenoid Saponin-Rich <i>Adisia gigantifolia</i> Extract on Human Breast Adenocarcinoma Cells <i>in Vitro</i> and <i>in Vivo</i> L.-H. Mu, L. Bai, X.-Z. Dong, F.-Q. Yan, D.-H. Guo, X.-L. Zheng, and P. Liu	1035
Newly Synthesized ‘Hidabeni’ Chalcone Derivatives Potently Suppress LPS-Induced NO Production <i>via</i> Inhibition of STAT1, but Not NF- κ B, JNK, and p38, Pathways in Microglia H. Hara, R. Ikeda, M. Ninomiya, T. Kamiya, M. Koketsu, and T. Adachi	1042
Inhalation Administration of Valerena-4,7(11)-diene from <i>Nardostachys chinensis</i> Roots Ameliorates Restraint Stress-Induced Changes in Murine Behavior and Stress-Related Factors H. Takemoto, Y. Omameuda, M. Ito, T. Fukuda, S. Kaneko, A. Akaike, and Y. Kobayashi	1050
Effect of Short-term Polyphenol Treatment on Endothelial Dysfunction and Thromboxane A ₂ Levels in Streptozotocin-Induced Diabetic Mice K. Taguchi, M. Hida, T. Matsumoto, Y. Ikeuchi-Takahashi, H. Onishi, and T. Kobayashi	1056
A Meta-analysis of the Association of <i>PPARγ</i> rs1801282 Polymorphism and NSAID Usage with the Risk of Developing Cancer M. Nagao, Y. Sato, and A. Yamauchi	1062
A Novel Transgenic Mouse Model Carrying Human Tribbles Related Protein 3 (TRB3) Gene and Its Site Specific Phenotype Y. Sakai, K. Fukamachi, M. Futakuchi, I. Miyoshi, H. Tsuda, M. Suzui, and H. Hayashi	1068

Note

Significant Decrease in Plasma <i>N</i> -Acetyl-seryl-aspartyl-lysyl-proline Level in Patients with End Stage Renal Disease after Kidney Transplantation Y. Suzuki, F. Katagiri, F. Sato, K. Fujioka, Y. Sato, T. Fujioka, Y. Sato, H. Mimata, and H. Itoh	1075
Notices of Retraction	1080