

Volume 92

Number 1 / Numéro 1

January / Janvier

2014

An NRC Research  
Press Journal

Une revue de  
NRC Research  
Press

Canadian Journal of  
**Zoology**

Revue canadienne de  
**zoologie**

[www.nrcresearchpress.com](http://www.nrcresearchpress.com)



In cooperation with the  
Canadian Society of Zoologists



Avec le concours de  
la Société canadienne de zoologie

 **NRC**  
Research Press



Canadian Journal of  
**Zoology**

Volume 92, Number 1, January 2014

Revue canadienne de  
**zoologie**

Volume 92, numéro 1, janvier 2014

iii-iv

NOTE OF APPRECIATION / NOTE DE RECONNAISSANCE

**Behaviour**

**Comportement**

ARTICLES

ARTICLES

A.S. Kennedy, A.N. Zerbini, O.V. Vásquez,  
N. Gandilhon, P.J. Clapham, and O. Adam

9-18

Local and migratory movements of humpback whales  
(*Megaptera novaeangliae*) satellite-tracked in the North  
Atlantic Ocean

A.-J. Haarsma and H. Siepel

57-65

Group size and dispersal ploys: an analysis of commuting  
behaviour of the pond bat (*Myotis dasycneme*)

Michaël Guillon, Gaëtan Guiller,  
Dale F. DeNardo, and Olivier Lourdais

81-86

Microclimate preferences correlate with contrasted  
evaporative water loss in parapatric vipers at their  
contact zone

**Ecology**

**Écologie**

ARTICLES

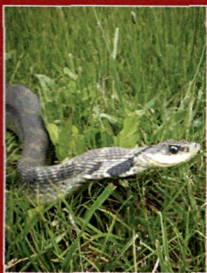
ARTICLES

C.F. Thompson, S.K. Sakaluk, B.S. Masters,  
B.G.P. Johnson, L.A. Vogel, A.M. Forsman,  
and L.S. Johnson

1-7

Condition-dependent sex difference in nestling House  
Wren (*Troglodytes aedon*) response to  
phytohaemagglutinin injection

*Continued on inside back cover / Suite au verso*



**Front cover:** A female Eastern Hog-nosed Snake (*Heterodon platirhinos* Latreille, 1801) en route to her nesting site near Long Point, Ontario, Canada (photograph by C. Peet-Paré, Ottawa, Ontario).

**Page couverture :** Une femelle couleuvre à groin de l'est (*Heterodon platirhinos* Latreille, 1801) en route pour son site de ponte près de Long Point (Ontario), Canada (photographie de C. Peet-Paré, Ottawa (Ontario)).

<b>William S. Beatty, James C. Beasley, and Olin E. Rhodes, Jr.</b>	<b>41–48</b>	Habitat selection by a generalist mesopredator near its historical range boundary
<b>T.M. Radtke, J.R.N. Glasier, and S.D. Wilson</b>	<b>49–55</b>	Species composition and abundance of ants and other invertebrates in stands of crested wheatgrass ( <i>Agropyron cristatum</i> ) and native grasslands in the northern Great Plains
<b>J.M. Waterman, G.F. Macklin, and C. Enright</b>	<b>73–79</b>	Sex-biased parasitism in Richardson's ground squirrels ( <i>Urocitellus richardsonii</i> ) depends on the parasite examined
<b>Genetics</b>		<b>Génétique</b>
	ARTICLE	ARTICLE
<b>Christopher R. Friesen, Robert T. Mason, Stevan J. Arnold, and Suzanne Estes</b>	<b>33–40</b>	Patterns of sperm use in two populations of Red-sided Garter Snake ( <i>Thamnophis sirtalis parietalis</i> ) with long-term female sperm storage
<b>Morphology and ultrastructure</b>		<b>Morphologie et ultrastructure</b>
	ARTICLE	ARTICLE
<b>B.A. Tarnawski, G.H. Cassini, and D.A. Flores</b>	<b>19–31</b>	Skull allometry and sexual dimorphism in the ontogeny of the southern elephant seal ( <i>Mirounga leonina</i> )
<b>Parasitology and pathology</b>		<b>Parasitologie et pathologie</b>
	ARTICLE	ARTICLE
<b>M. Garrido and V. Pérez-Mellado</b>	<b>67–72</b>	Sprint speed is related to blood parasites, but not to ectoparasites, in an insular population of lacertid lizards