

TM
c-09/jz

Volume 92

Number 8 / Numéro 8

August / Août

2014

An NRC Research
Press Journal

Une revue de
NRC Research
Press

Canadian Journal of Zoology

Revue canadienne de
zoologie

www.nrcresearchpress.com



In cooperation with the
Canadian Society of Zoologists



Avec le concours de
la Société canadienne de zoologie

 **NRC
Research Press**

Canadian Journal of Zoology

Volume 92, Number 8, August 2014

Revue canadienne de zoologie

Volume 92, numéro 8, août 2014

Behaviour

ARTICLES

Thomas Wardziak, Laurent Oxarango,
Sébastien Valette, Laurent Mahieu-Williame,
and Pierre Joly

707–714

Cristina Eisenberg, David E. Hibbs,
William J. Ripple, and Hal Salwasser

727–736

Ecology

ARTICLES

G.A. Savory, C.M. Hunter, M.J. Wooller,
and D.M. O'Brien

657–663

J.L. Segers and H.G. Broders

665–673

D. Jakubas and K. Wojczulanis-Jakubas

681–687

Comportement

ARTICLES

Modelling skin surface areas involved in water transfer in the Palmate Newt (*Lissotriton helveticus*)

Context dependence of elk (*Cervus elaphus*) vigilance and wolf (*Canis lupus*) predation risk

Écologie

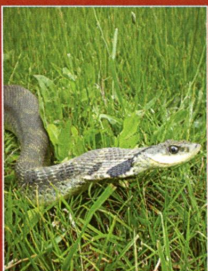
ARTICLES

Anthropogenic food use and diet overlap between red foxes (*Vulpes vulpes*) and arctic foxes (*Vulpes lagopus*) in Prudhoe Bay, Alaska

Interspecific effects of forest fragmentation on bats

Consequences of experimental clutch enlargement in a High Arctic single-egg layer, the Little Auk (*Alle alle*)

Continued on inside back cover / Suite au verso



Front cover: A female Eastern Hog-nosed Snake (*Heterodon platirhinos* Latreille, 1801) en route to her nesting site near Long Point, Ontario, Canada (photograph by C. Peet-Paré, Ottawa, Ontario).

Page couverture : Une femelle couleuvre à groin de l'est (*Heterodon platirhinos* Latreille, 1801) en route pour son site de ponte près de Long Point (Ontario), Canada (photographie de C. Peet-Paré, Ottawa (Ontario)).



J.L. Merlo, A.P. Cutrera, and R.R. Zenuto 689–697

Inflammation in response to phytohemagglutinin injection in the Talas tuco-tuco (*Ctenomys talarum*): implications for the estimation of immunocompetence in natural populations of wild rodents

**Dongwei Kang, Xiaorong Wang,
Hongwei Yang, Lijuan Duan, and Junqing Li** 715–719

Habitat use by giant pandas (*Ailuropoda melanoleuca*) in relation to roads in the Wanglang Nature Reserve, People's Republic of China

N.A. Vasilieva and A.V. Tchabovsky 737–747

Timing is the only thing: reproduction in female yellow ground squirrels (*Spermophilus fulvus*)

Parasitology and pathology

ARTICLE

Parasitologie et pathologie

ARTICLE

**A.M. Ramey, J.A. Reed, J.A. Schmutz,
T.F. Fondell, B.W. Meixell, J.W. Hupp,
D.H. Ward, J. Terenzi, and C.R. Ely** 699–706

Prevalence, transmission, and genetic diversity of blood parasites infecting tundra-nesting geese in Alaska

Systematics and evolution

ARTICLES

Systématique et évolution

ARTICLES

T.E. Reimchen and J.C. MacAdams 675–679

Population, sex, and ontogenetic differences in the procurrent rays of the caudal fin in threespine sticklebacks (*Gasterosteus aculeatus*)

**Trish C. Kelley, Jeff W. Higdon,
and Steven H. Ferguson** 721–726

Large testes and brain sizes in odontocetes (order Cetacea, suborder Odontoceti): the influence of mating system on encephalization