

RW  
C19/jz

# Canadian Journal of Zoology

Revue canadienne de  
zoologie

Volume 92

Number 12 / Numéro 12

December / Décembre  
2014

An NRC Research  
Press Journal

Une revue de  
NRC Research  
Press

[www.nrcresearchpress.com](http://www.nrcresearchpress.com)



In cooperation with the  
Canadian Society of Zoologists



Avec le concours de  
la Société canadienne de zoologie

 **NRC**  
Research Press

**Behaviour**

ARTICLES

**K.V. Noyce and D.L. Garshelis**    **1005–1017**

**I. van der Merwe, N.C. Bennett, A. Haim,  
and M.K. Oosthuizen**    **1083–1091**

**Biochemistry and physiology**

ARTICLE

**Jimena López-Arrabé, Alejandro Cantarero,  
Lorenzo Pérez-Rodríguez, Antonio Palma,  
and Juan Moreno**    **1019–1027**

**Ecology**

ARTICLES

**R.D. Semlitsch, K.M. O'Donnell,  
and F.R. Thompson III**    **997–1004**

**Comportement**

ARTICLES

Follow the leader: social cues help guide landscape-level movements of American black bears (*Ursus americanus*)

Locomotor activity in the Namaqua rock mouse (*Micaelamys namaquensis*): entrainment by light manipulations

**Biochimie et physiologie**

ARTICLE

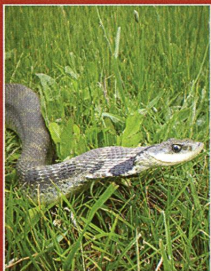
Plumage ornaments and reproductive investment in relation to oxidative status in the Iberian Pied Flycatcher (*Ficedula hypoleuca iberiae*)

**Écologie**

ARTICLES

Abundance, biomass production, nutrient content, and the possible role of terrestrial salamanders in Missouri Ozark forest ecosystems

*Continued on inside back cover / Suite au verso*



**Front cover:** A female Eastern Hog-nosed Snake (*Heterodon platirhinos* Latreille, 1801) en route to her nesting site near Long Point, Ontario, Canada (photograph by C. Peet-Paré, Ottawa, Ontario).

**Page couverture :** Une femelle couleuvre à groin de l'est (*Heterodon platirhinos* Latreille, 1801) en route pour son site de ponte près de Long Point (Ontario), Canada (photographie de C. Peet-Paré, Ottawa (Ontario)).



<b>Dave Hervieux, Mark Hebblewhite, Dave Stepnisky, Michelle Bacon, and Stan Boutin</b>	<b>1029–1037</b>	Managing wolves ( <i>Canis lupus</i> ) to recover threatened woodland caribou ( <i>Rangifer tarandus caribou</i> ) in Alberta
<b>Charles J. Krebs, John Bryant, Knut Kielland, Mark O'Donoghue, Frank Doyle, Suzanne Carriere, Donna DiFolco, Nathan Berg, Rudy Boonstra, Stan Boutin, Alice J. Kenney, Donald G. Reid, Karin Bodony, Judy Putera, Henry K. Timm, Toby Burke, Julie A.K. Maier, and Howard Golden</b>	<b>1039–1048</b>	What factors determine cyclic amplitude in the snowshoe hare ( <i>Lepus americanus</i> ) cycle?
<b>Brandi L. Simmons, Jenifer Sterling, and Jane C. Watson</b>	<b>1059–1065</b>	Species and size-selective predation by raccoons ( <i>Procyon lotor</i> ) preying on introduced intertidal clams
<b>Julien H. Richard, John Wilmshurst, and Steeve D. Côté</b>	<b>1067–1074</b>	The effect of snow on space use of an alpine ungulate: recently fallen snow tells more than cumulative snow depth
<b>Morphology and ultrastructure</b>		<b>Morphologie et ultrastructure</b>
	ARTICLES	ARTICLES
<b>Nathan V. Whelan and Ellen E. Strong</b>	<b>989–995</b>	Seasonal reproductive anatomy and sperm storage in pleurocerid gastropods (Cerithioidea: Pleuroceridae)
<b>K. Tanaka and D.K. Zelenitsky</b>	<b>1049–1058</b>	Comparisons between experimental and morphometric water vapor conductance in the eggs of extant birds and crocodiles: implications for predicting nest type in dinosaurs
<b>Parasitology and pathology</b>		<b>Parasitologie et pathologie</b>
	ARTICLE	ARTICLE
<b>W.D. Halliday, J.E. Paterson, L.D. Patterson, S.J. Cooke, and G. Blouin-Demers</b>	<b>1075–1082</b>	Testosterone, body size, and sexual signals predict parasite load in Yarrow's Spiny Lizards ( <i>Sceloporus jarrovi</i> )
<b>Systematics and evolution</b>		<b>Systématique et évolution</b>
	NOTE	NOTE
<b>Raúl E. González-Ittig, Narayan Kandel, Silvana Levis, Gladys Calderón, Jorge Salazar-Bravo, and Cristina N. Gardenal</b>	<b>1093–1098</b>	Molecular systematics of the South American rodent <i>Calomys laucha</i> (Cricetidae: Sigmodontinae), a reservoir of the Laguna Negra hantavirus