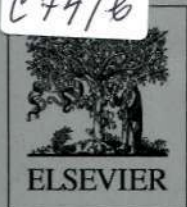


C74/6

VOLUME 164A, ISSUE 1

JANUARY 2013

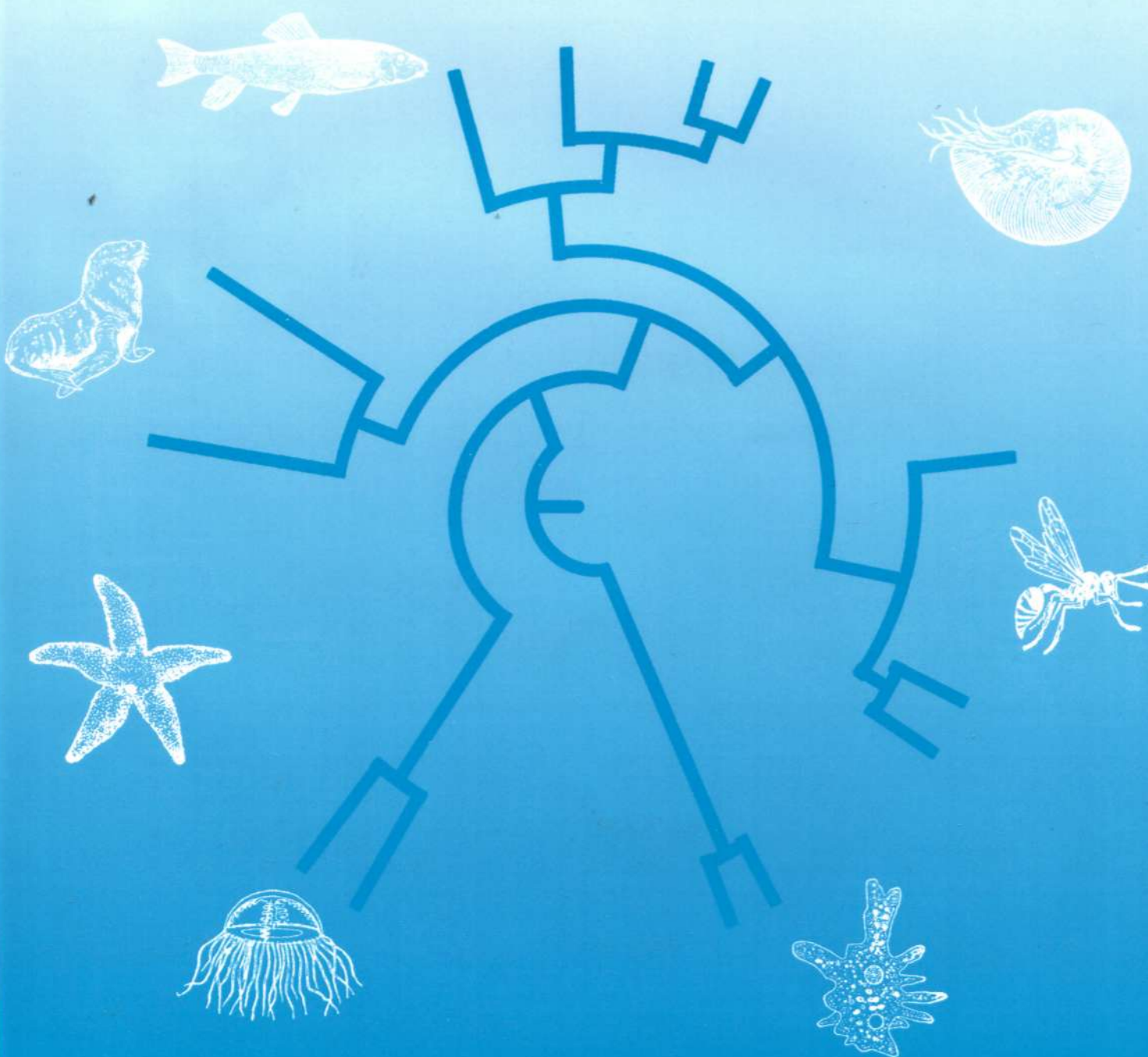
ISSN: 1095-6433



COMPARATIVE BIOCHEMISTRY AND PHYSIOLOGY

CBP

Molecular &
Integrative
Physiology



COMPARATIVE BIOCHEMISTRY AND PHYSIOLOGY

CBP

Contents

- B.M. Meyer, J.M. Froehlich, N.J. Galt and P.R. Biga 1 Inbred strains of zebrafish exhibit variation in growth performance and myostatin expression following fasting
- R. Sudo, H. Suetake, Y. Suzuki, J. Aoyama and K. Tsukamoto 10 Profiles of mRNA expression for prolactin, growth hormone, and somatolactin in Japanese eels, *Anguilla japonica*: The effect of salinity, silvering and seasonal change
- Y. Kamisaka, J.V. Helvik, M. Tagawa, M. Tanaka and I. Rønnestad 17 Evidence for an ontogenetic change from pre-programmed to meal-responsive *cck* production in Atlantic herring, *Clupea harengus* L.
- E.J. Narayan, J.F. Cockrem and J.-M. Hero 21 Are baseline and short-term corticosterone stress responses in free-living amphibians repeatable?
- R. Pellegrino, T.L. Martins, C.B. Pinto, V. Schein, L.C. Kucharski and R.S.M. Da Silva 29 Effect of starvation and refeeding on amino acid metabolism in muscle of crab *Neohelice granulata* previously fed protein- or carbohydrate-rich diets
- S.G. Velleman, Y. Song, J. Shin and D.C. McFarland 36 Modulation of turkey myogenic satellite cell differentiation through the shedding of glypican-1
- A. Kullgren, F. Jutfelt, R. Fontanillas, K. Sundell, L. Samuelsson, K. Wiklander, P. Kling, W. Koppe, D.G.J. Larsson, B.T. Björnsson and E. Jönsson 44 The impact of temperature on the metabolome and endocrine metabolic signals in Atlantic salmon (*Salmo salar*)
- S. Fehsenfeld and D. Weihrauch 54 Differential acid-base regulation in various gills of the green crab *Carcinus maenas*: Effects of elevated environmental $p\text{CO}_2$
- B. Zhao, Y. Chen, Y. Wang, P. Ding and W.-G. Du 66 Does the hydric environment affect the incubation of small rigid-shelled turtle eggs?
- V. Fasulo, Z. Zhang, E.R. Price, J.G. Chediack, W.H. Karasov and E. Caviedes-Vidal 71 Paracellular absorption in laboratory mice: Molecule size-dependent but low capacity

Contents continued on inside back cover

Available online at www.sciencedirect.com

SciVerse ScienceDirect

164A (1) 1–270 (2013)



1095-6433(201301)164:1;1-0

| | | |
|--|-----|---|
| V. Foray, E. Desouhant, Y. Voituron, V. Larvor, D. Renault, H. Colinet and P. Gibert | 77 | Does cold tolerance plasticity correlate with the thermal environment and metabolic profiles of a parasitoid wasp? |
| R. Chandurvelan, I.D. Marsden, S. Gaw and C.N. Glover | 84 | Field-to-laboratory transport protocol impacts subsequent physiological biomarker response in the marine mussel, <i>Perna canaliculus</i> |
| A. Bednářová, D. Kodrlik and N. Krishnan | 91 | Unique roles of glucagon and glucagon-like peptides: Parallels in understanding the functions of adipokinetic hormones in stress responses in insects |
| A. Schwarm, T. Viergutz, B. Kuhla, H.M. Hammon and M. Schweigel-Röntgen | 101 | Fuel feeds function: Energy balance and bovine peripheral blood mononuclear cell activation |
| R.S. Hobbs and G.L. Fletcher | 111 | Epithelial dominant expression of antifreeze proteins in cunner suggests recent entry into a high freeze-risk ecozone |
| P. Dasmeh, R.W. Davis and K.P. Kepp | 119 | Aerobic dive limits of seals with mutant myoglobin using combined thermochemical and physiological data |
| D.W.H. Müller, D. Codron, C. Meloro, A. Munn, A. Schwarm, J. Hummel and M. Clauss | 129 | Assessing the Jarman-Bell Principle: Scaling of intake, digestibility, retention time and gut fill with body mass in mammalian herbivores |
| A.V. Sirotkin, S. Pavlova, M. Tena-Sempere, R. Grossmann, M.R. Jiménez, J.M.C. Rodríguez and F. Valenzuela | 141 | Food restriction, ghrelin, its antagonist and obestatin control expression of ghrelin and its receptor in chicken hypothalamus and ovary |
| L.A. Enzor, M.L. Zippay and S.P. Place | 154 | High latitude fish in a high CO ₂ world: Synergistic effects of elevated temperature and carbon dioxide on the metabolic rates of Antarctic notothenioids |
| O.V. Lozinsky, O.V. Lushchak, N.I. Kryshchuk, N.Y. Shchypanska, A.H. Riabkina, S.V. Skarbek, I.V. Maksymiv, J.M. Storey, K.B. Storey and V.I. Lushchak | 162 | S-nitrosoglutathione-induced toxicity in <i>Drosophila melanogaster</i> : Delayed pupation and induced mild oxidative/nitrosative stress in eclosed flies |
| N.K. Iversen, H. Lauridsen, D.T.T. Huong, N. Van Cong, H. Gesser, R. Buchanan, M. Bayley, M. Pedersen and T. Wang | 171 | Cardiovascular anatomy and cardiac function in the air-breathing swamp eel (<i>Monopterus albus</i>) |
| C.-K. Kang, W.-K. Yang, S.-T. Lin, C.-C. Liu, H.-M. Lin, H.-H. Chen, C.-W. Cheng, T.-H. Lee and P.-P. Hwang | 181 | The acute and regulatory phases of time-course changes in gill mitochondrion-rich cells of seawater-acclimated medaka (<i>Oryzias latipes</i>) when exposed to hypoosmotic environments |
| A. Vosloo, A. Laas and D. Vosloo | 192 | Differential responses of juvenile and adult South African abalone (<i>Haliotis midae</i> Linnaeus) to low and high oxygen levels |
| A.A. Ahmed, W. Ma, F. Guo, Y. Ni, R. Grossmann and R. Zhao | 200 | Differences in egg deposition of corticosterone and embryonic expression of corticosterone metabolic enzymes between slow and fast growing broiler chickens |

(continued on last page of this issue)

| | | |
|---|-----|---|
| L.F.C. Castro, A. Lobo-da-Cunha, M.J. Rocha, R. Urbatzka and E. Rocha | 207 | <i>Pex11α</i> in brown trout (<i>Salmo trutta</i> f. <i>fario</i>): Expression dynamics during the reproductive cycle reveals sex-specific seasonal patterns |
| A.M. Marchionatti, A. Pacciaroni and N.G. Tolosa de Talamoni | 215 | Effects of quercetin and menadione on intestinal calcium absorption and the underlying mechanisms |
| K.V. Brix, C.M. Wood and M. Grosell | 221 | Measuring titratable alkalinity by single versus double endpoint titration: An evaluation in two cyprinodont species and implications for characterizing net H ⁺ flux in aquatic organisms |
| F.F. Venold, M.H. Penn, J. Thorsen, J. Gu, T.M. Kortner, Å. Krogdahl and A.M. Bakke | 229 | Intestinal fatty acid binding protein (<i>fabp2</i>) in Atlantic salmon (<i>Salmo salar</i>): Localization and alteration of expression during development of diet induced enteritis |
| M. Librán-Pérez, A.C. Figueiredo-Silva, S. Panserat, I. Geurden, J.M. Míguez, S. Polakof and J.L. Soengas | 241 | Response of hepatic lipid and glucose metabolism to a mixture or single fatty acids: Possible presence of fatty acid-sensing mechanisms |
| S.A. Cruz, P.-L. Chao and P.-P. Hwang | 249 | Cortisol promotes differentiation of epidermal ionocytes through Foxi3 transcription factors in zebrafish (<i>Danio rerio</i>) |
| C.M. Wilson and A.P. Farrell | 258 | Pharmacological characterization of the heartbeat in an extant vertebrate ancestor, the Pacific hagfish, <i>Eptatretus stoutii</i> |
| | 264 | In appreciation |