

C74/B

VOLUME 164A, ISSUE 3

MARCH 2013

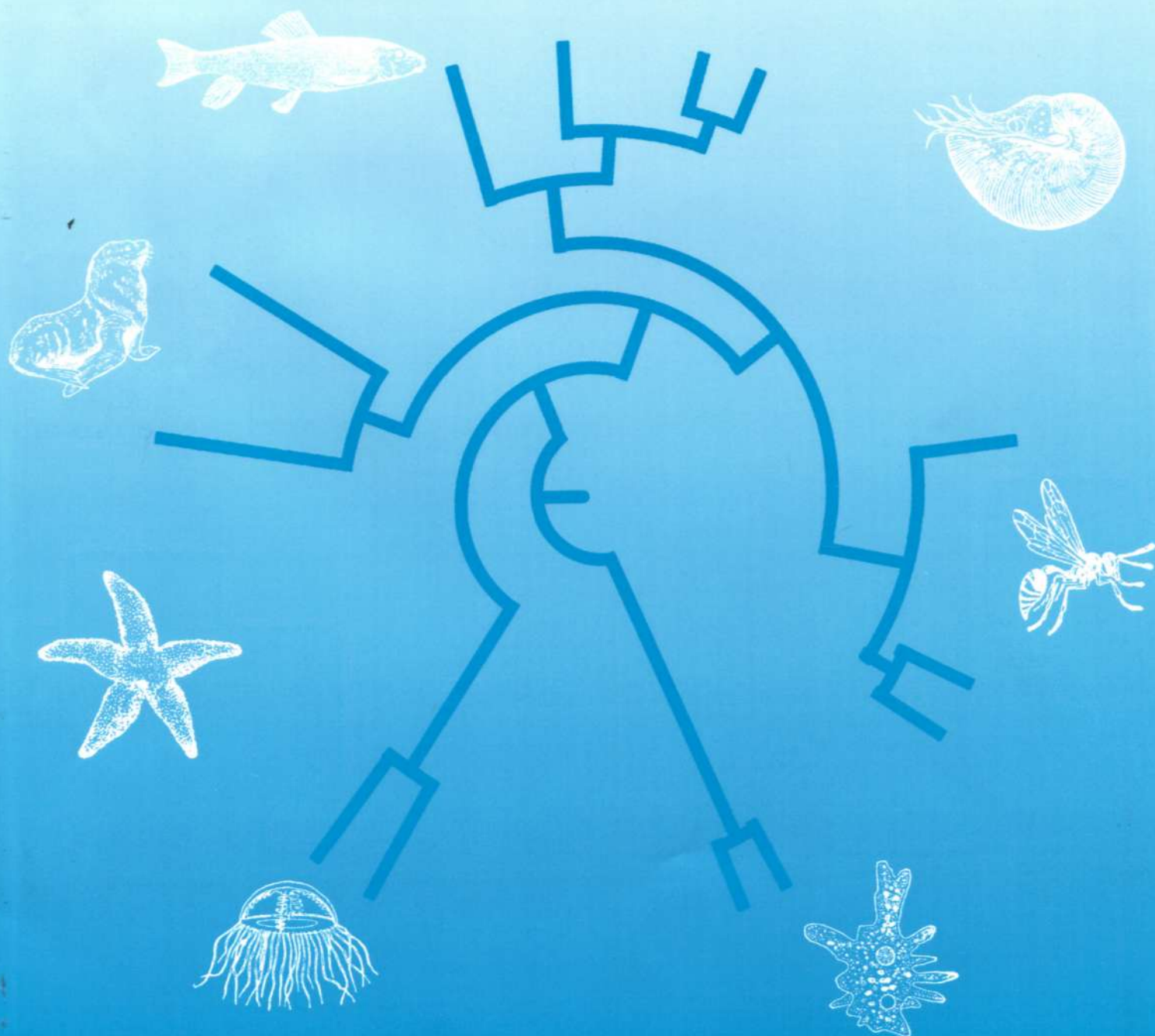
ISSN: 1095-6433



COMPARATIVE BIOCHEMISTRY AND PHYSIOLOGY

CBP

Molecular &
Integrative
Physiology



Contents

- | | | |
|--|-----|---|
| S.-C. Chuang and J.-H. Chen | 429 | Photooxidation and antioxidant responses in the earthworm <i>Amyntas gracilis</i> exposed to environmental levels of ultraviolet B radiation |
| C.M. O'Connor, T.M. Rodela, V.R. Mileva, S. Balshine and K.M. Gilmour | 438 | Corticosteroid receptor gene expression is related to sex and social behaviour in a social fish |
| V. Arizza, M. Vazzana, D. Schillaci, D. Russo, F.T. Giaramita and N. Parrinello | 447 | Gender differences in the immune system activities of sea urchin <i>Paracentrotus lividus</i> |
| C. Fu, Z.-D. Cao and S.-J. Fu | 456 | The effects of caudal fin amputation on metabolic interaction between digestion and locomotion in juveniles of three cyprinid fish species with different metabolic modes |
| I.A. Santos, G.C. Castellano and C.A. Freire | 466 | Direct relationship between osmotic and ionic conforming behavior and tissue water regulatory capacity in echinoids |
| F.A. Palermo, G. Cardinaletti, P. Cocci, E. Tibaldi, A. Polzonetti-Magni and G. Mosconi | 477 | Effects of dietary nucleotides on acute stress response and cannabinoid receptor 1 mRNAs in sole, <i>Solea solea</i> |
| W.-H. Zheng, L. Lin, J.-S. Liu, X.-J. Xu and M. Li | 483 | Geographic variation in basal thermogenesis in little buntings: Relationship to cellular thermogenesis and thyroid hormone concentrations |
| S.M. Wilson, S.G. Hinch, E.J. Eliason, A.P. Farrell and S.J. Cooke | 491 | Calibrating acoustic acceleration transmitters for estimating energy use by wild adult Pacific salmon |
| K. Gontier, J.-M. André, M.-D. Bernadet, K. Ricaud and S. Davail | 499 | Insulin effect on lipogenesis and fat distribution in three genotypes of ducks during overfeeding |
| M. Teles, R. Tridico, A. Callol, C. Fierro-Castro and L. Tort | 506 | Differential expression of the corticosteroid receptors GR1, GR2 and MR in rainbow trout organs with slow release cortisol implants |
| R. de Bruijn and L.M. Romero | 512 | Artificial rain and cold wind act as stressors to captive molting and non-molting European starlings (<i>Sturnus vulgaris</i>) |
| E. Margheritis, G. Terova, A.S. Oyadeyi, M.D. Renna, R. Cinquetti, A. Peres and E. Bossi | 520 | Characterization of the transport of lysine-containing dipeptides by PepT1 orthologs expressed in <i>Xenopus laevis</i> oocytes |

Contents continued on inside back cover

Available online at www.sciencedirect.com

164A (3) 429–544 (2013)

SciVerse ScienceDirect



1095-6433(201303)164:3;1-K

Contents continued from back cover

- S.A. Orlofske, L.K. Belden and W.A. Hopkins 529 Larval wood frog (*Rana [=Lithobates] sylvatica*) development and physiology following infection with the trematode parasite, *Echinostoma trivolvis*
- S. Wang, Y. Ni, F. Guo, W. Fu, R. Grossmann and R. Zhao 537 Effect of corticosterone on growth and welfare of broiler chickens showing long or short tonic immobility