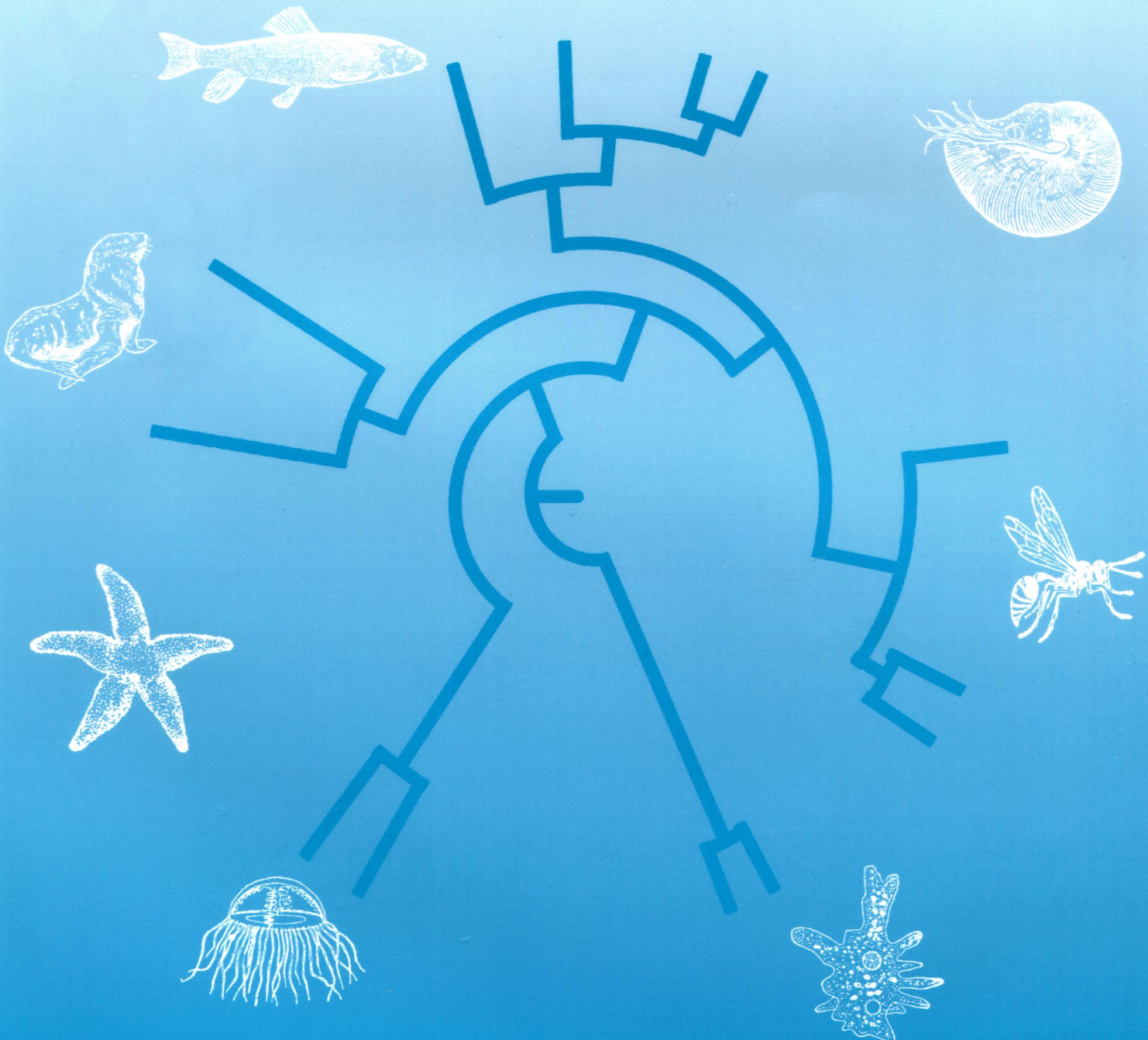


COMPARATIVE BIOCHEMISTRY AND PHYSIOLOGY

**CBP**

Molecular &  
Integrative  
Physiology



# COMPARATIVE BIOCHEMISTRY AND PHYSIOLOGY

## Contents

- C. Pohlenz, A. Buentello, T. Miller, B.C. Small, D.S. MacKenzie and D.M. Gatlin III 215 Effects of dietary arginine on endocrine growth factors of channel catfish, *Ictalurus punctatus*
- T.A. Duffy, M.E. Picha, R.J. Borski and D.O. Conover 222 Circulating levels of plasma IGF-I during recovery from size-selective harvesting in *Menidia menidia*
- S. Selvaraj, H. Ohga, M. Nyuji, H. Kitano, N. Nagano, A. Yamaguchi and M. Matsuyama 228 Subcutaneous administration of Kiss1 pentadecapeptide accelerates spermatogenesis in prepubertal male chub mackerel (*Scomber japonicus*)
- D. Madeira, L. Narciso, H.N. Cabral, C. Vinagre and M.S. Diniz 237 Influence of temperature in thermal and oxidative stress responses in estuarine fish
- M. Ben-Hamo, M.D. Mc Cue, I. Khozin-Goldberg, S.R. Mc Williams and B. Pinshow 244 Ambient temperature and nutritional stress influence fatty acid composition of structural and fuel lipids in Japanese quail (*Coturnix japonica*) tissues
- Md.R. Ali, J. Seo, D. Lee and Y. Kim 251 Teratocyte-secreting proteins of an endoparasitoid wasp, *Cotesia plutellae*, prevent host metamorphosis by altering endocrine signals
- W. Luo, Y. Ito, H. Mizuta, K. Massaki, N. Hiramatsu, T. Todo, B.J. Reading, C.V. Sullivan and A. Hara 263 Molecular cloning and partial characterization of an ovarian receptor with seven ligand binding repeats, an orthologue of low-density lipoprotein receptor, in the cutthroat trout (*Oncorhynchus clarki*)
- M.S. Tellis, M.M. Lauer, S. Nadella, A. Bianchini and C.M. Wood 272 Ionic status, calcium uptake, and Ca<sup>2+</sup>-ATPase activity during early development in the purple sea urchin (*Strongylocentrotus purpuratus*)
- G.N. Lyons, L.G. Halsey, E.C. Pope, J.D. Eddington and J.D.R. Houghton 278 Energy expenditure during activity in the American lobster *Homarus americanus*: Correlations with body acceleration
- E. Margheritis, G. Terova, R. Cinquetti, A. Peres and E. Bossi 285 Functional properties of a newly cloned fish ortholog of the neutral amino acid transporter B<sup>0</sup>AT1 (SLC6A19)

Contents continued on inside back cover

Available online at [www.sciencedirect.com](http://www.sciencedirect.com)

166A (2) 215–398 (2013)

SciVerse ScienceDirect



1095-6433(201310)166:2;1-J

<b>J. Genz, B. Carriere and W.G. Anderson</b>	293	Mechanisms of calcium absorption by anterior and posterior segments of the intestinal tract of juvenile lake sturgeon
<b>M.A. Ramos, B. Weber, J.F. Gonçalves, G.A. Santos, P. Rema and R.O.A. Ozório</b>	302	Dietary probiotic supplementation modulated gut microbiota and improved growth of juvenile rainbow trout ( <i>Oncorhynchus mykiss</i> )
<b>W. He, W. Xia, Z.-D. Cao and S.-J. Fu</b>	308	The effect of prolonged exercise training on swimming performance and the underlying biochemical mechanisms in juvenile common carp ( <i>Cyprinus carpio</i> )
<b>F.O. Martins, J. Rito, I. Jarak, I. Viegas, M.A. Pardal, M.P. Macedo and J.G. Jones</b>	316	Disposition of [ $U\text{-}^2\text{H}_7$ ]glucose into hepatic glycogen in rat and in seabass
<b>M.Y. Seo, M. Mekuchi, K. Teranishi and T. Kaneko</b>	323	Expression of ion transporters in gill mitochondrion-rich cells in Japanese eel acclimated to a wide range of environmental salinity
<b>F. Brischoux, M.J. Briand, G. Billy and X. Bonnet</b>	333	Variations of natremia in sea kraits ( <i>Laticauda</i> spp.) kept in seawater and fresh water
<b>M. Franco, C. Contreras and R.F. Nespolo</b>	338	Profound changes in blood parameters during torpor in a South American marsupial
<b>G. Bolin and W.W. Burggren</b>	343	Metanephric kidney development in the chicken embryo: Glomerular numbers, characteristics and perfusion
<b>M.I. Girón-Pérez, C.A. Romero-Bañuelos, G.A. Toledo-Ibarra, A.E. Rojas-García, I.M. Medina-Díaz, M.L. Robledo-Marengo and A. Vega-López</b>	351	Corrigendum to “Evaluation of pollution in Camichin estuary (Mexico): Pro-oxidant and antioxidant response in oyster ( <i>Crassostrea corteziensis</i> )” [Comp. Biochem. Physiol. A 165, (2013) 476–482]
<b>B.M. Casper, M.E. Smith, M.B. Halvorsen, H. Sun, T.J. Carlson and A.N. Popper</b>	352	Effects of exposure to pile driving sounds on fish inner ear tissues
<b>K. Murashita, Y. Yoshiura, S.-i. Chisada, H. Furuita, T. Sugita, H. Matsunari and T. Yamamoto</b>	361	Postprandial response and tissue distribution of the bile acid synthesis-related genes, <i>cyp7a1</i> , <i>cyp8b1</i> and <i>shp</i> , in rainbow trout <i>Oncorhynchus mykiss</i>
<b>V.P. Leite and F.P. Zanotto</b>	370	Calcium transport in gill cells of <i>Ucides cordatus</i> , a mangrove crab living in variable salinity environments
<b>B.L. Jones, J. VanLoozen, M.H. Kim, S.J. Miles, C.M. Dunham, L.D. Williams and T.W. Snell</b>	375	Stress granules form in <i>Brachionus manjavacas</i> (Rotifera) in response to a variety of stressors
<b>E.J. Eliason, T.D. Clark, S.G. Hinch and A.P. Farrell</b>	385	Cardiorespiratory performance and blood chemistry during swimming and recovery in three populations of elite swimmers: Adult sockeye salmon