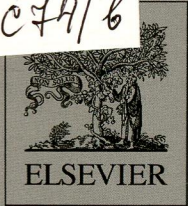


711  
C74/6

VOLUME 171A

MAY 2014

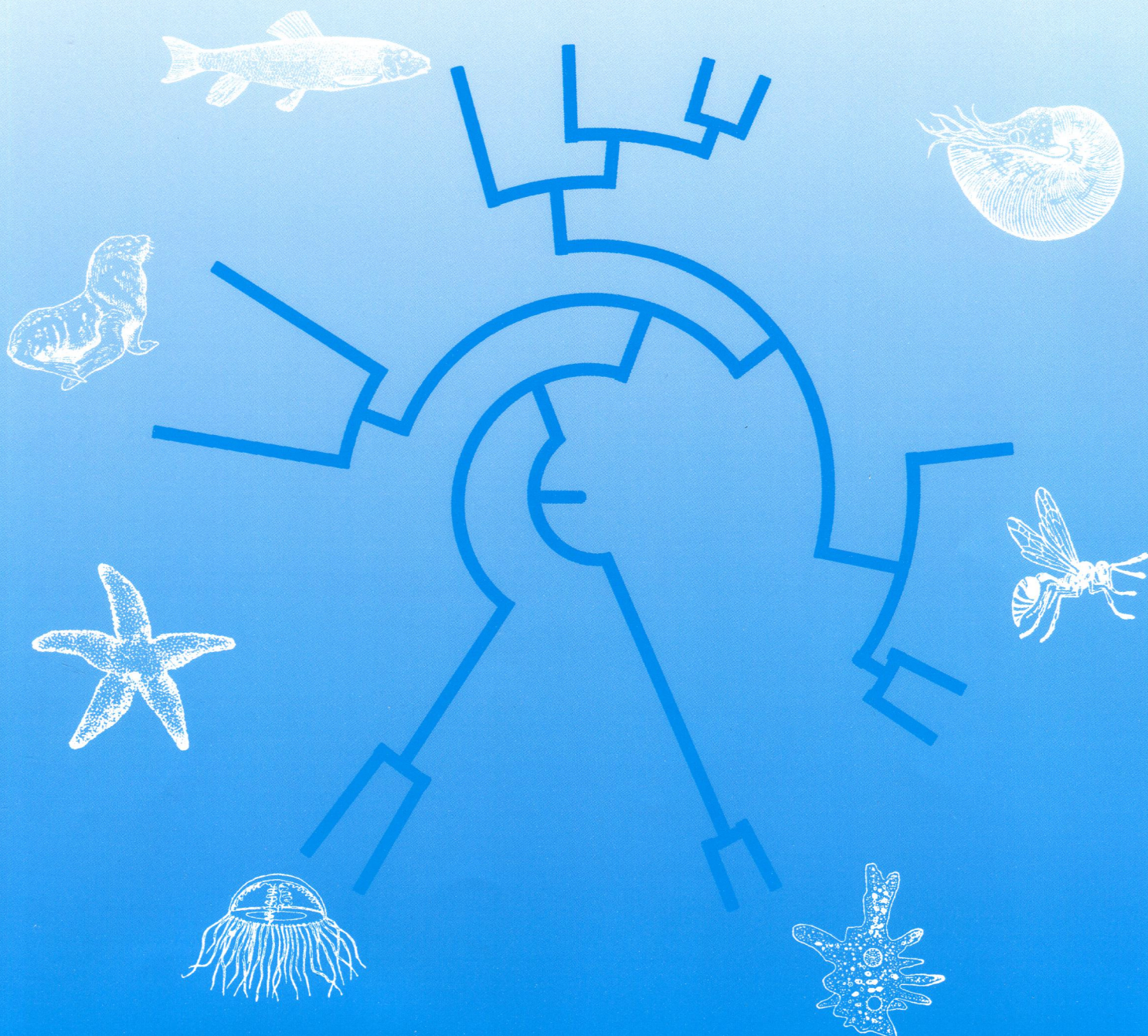
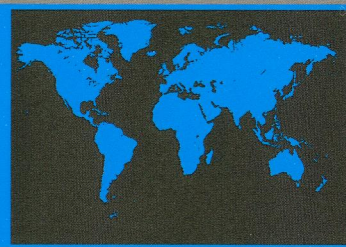
ISSN: 1095-6433



# COMPARATIVE BIOCHEMISTRY AND PHYSIOLOGY

# CBP

Molecular &  
Integrative  
Physiology



# COMPARATIVE BIOCHEMISTRY AND PHYSIOLOGY

# CBP

## Contents

- Y.K. Kim, S.Y. Lee, B.S. Kim,  
D.S. Kim and Y.K. Nam**  
1 Isolation and mRNA expression analysis of aquaporin isoforms in marine medaka *Oryzias dancena*, a euryhaline teleost
- S.C. Guffey and G.G. Goss**  
9 Time course of the acute response of the North Pacific spiny dogfish shark (*Squalus suckleyi*) to low salinity
- W. Joyce, H. Gesser and T. Wang**  
16 Purinoceptors exert negative inotropic effects on the heart in all major groups of reptiles
- A.G. Jimenez, C. Cooper-Mullin,  
N.B. Anthony and J.B. Williams**  
23 Cellular metabolic rates in cultured primary dermal fibroblasts and myoblast cells from fast-growing and control *Coturnix* quail
- R.I. López-Cruz, M. Barjau Pérez-Milicua,  
D.E. Crocker, R. Gaxiola-Robles,  
J.A. Bernal-Vertiz, A. de la Rosa,  
J.P. Vázquez-Medina and T. Zenteno-Savín**  
31 Purine nucleoside phosphorylase and xanthine oxidase activities in erythrocytes and plasma from marine, semiaquatic and terrestrial mammals
- V. Carregosa, E. Figueira, A.M. Gil,  
S. Pereira, J. Pinto, A.M. Soares and  
R. Freitas**  
36 Tolerance of *Venerupis philippinarum* to salinity: Osmotic and metabolic aspects
- E.J. Eliason and A.P. Farrell**  
44 Effect of hypoxia on specific dynamic action and postprandial cardiovascular physiology in rainbow trout (*Oncorhynchus mykiss*)
- L.M. Parsley, E. Wapstra and S.M. Jones**  
51 Yolk contributes steroid to the multidimensional endocrine environment of embryos of *Niveoscincus metallicus*, a viviparous skink with a moderately complex placenta
- A.J. Esbaugh and M. Grosell**  
57 Esophageal desalination is mediated by Na<sup>+</sup>, H<sup>+</sup> exchanger-2 in the gulf toadfish (*Opsanus beta*)

Available online at [www.sciencedirect.com](http://www.sciencedirect.com)

171A 1-64 (2014)

ScienceDirect



1095-6433(201405)171C;1-7