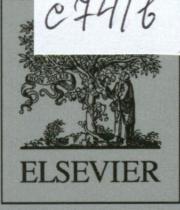


100
c74/b

VOLUME 175A

SEPTEMBER 2014

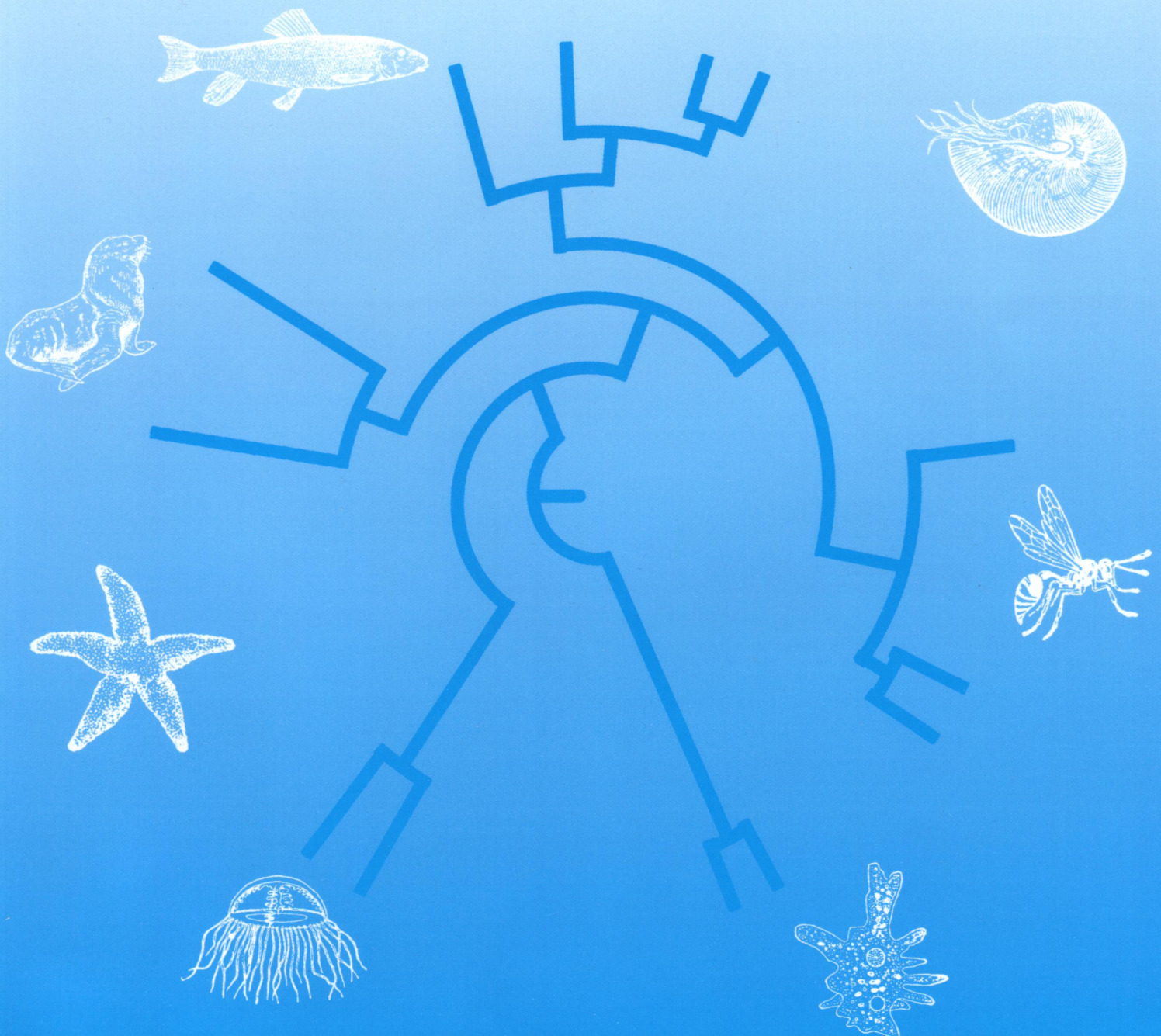
ISSN: 1095-6433



COMPARATIVE BIOCHEMISTRY AND PHYSIOLOGY

CBP

Molecular &
Integrative
Physiology



Contents

- Z.M. Halem, D.J. Ross and R.L. Cox**
- M. Tobler, C. Henpita, B. Bassett, J.L. Kelley and J.H. Shaw**
- S.J. Gignac, N.T.K. Vo, M.S. Mikhaeil, J.A.N. Alexander, D.L. MacLatchy, P.M. Schulte and L.E.J. Lee**
- P. Anacleto, A.L. Maulvault, V.M. Lopes, T. Repolho, M. Diniz, M.L. Nunes, A. Marques and R. Rosa**
- D.V. Abramochkin and M. Vornanen**
- R. Parkash, P. Ranga and D.D. Aggarwal**
- N.J. Galt, J.M. Froehlich, E.A. Remily, S.R. Romero and P.R. Biga**
- A.J. Bowden, N.M. Gardiner, C.S. Couturier, J.A.W. Stecyk, G.E. Nilsson, P.L. Munday and J.L. Rummer**
- M. Bou, M. Todorčević, R. Fontanillas, E. Capilla, J. Gutiérrez and I. Navarro**
- L. Teulier, J.-L. Rouanet, B. Rey and D. Roussel**
- J.L. Merlo, A.P. Cutrera, F. Luna and R.R. Zenuto**
- 1 Evidence for intraspecific endocrine disruption of *Geukensia demissa* (Atlantic ribbed mussel) in an urban watershed
- 7 H₂S exposure elicits differential expression of candidate genes in fish adapted to sulfidic and non-sulfidic environments
- 15 Derivation of a continuous myogenic cell culture from an embryo of common killifish, *Fundulus heteroclitus*
- 28 Ecophysiology of native and alien-invasive clams in an ocean warming context
- 38 Inhibition of the cardiac ATP-dependent potassium current by KB-R7943
- 46 Developmental acclimation to low or high humidity conditions affect starvation and heat resistance of *Drosophila melanogaster*
- 57 The effects of exogenous cortisol on *myostatin* transcription in rainbow trout, *Oncorhynchus mykiss*
- 64 Alterations in gill structure in tropical reef fishes as a result of elevated temperatures
- 72 Adipose tissue and liver metabolic responses to different levels of dietary carbohydrates in gilthead sea bream (*Sparus aurata*)
- 82 Ontogeny of non-shivering thermogenesis in Muscovy ducklings (*Cairina moschata*)
- 90 PHA-induced inflammation is not energetically costly in the subterranean rodent *Ctenomys talarum* (tuco-tucos)

Contents continued on inside back cover

Available online at www.sciencedirect.com

175A 1–140 (2014)

ScienceDirect



1095-6433(201409)175C;1-K

- P. Zduniak, A. Surmacki, K. Erciyas-Yavuz, M. Chudzińska and D. Baralkiewicz** 96 Are there different requirements for trace elements in eumelanin- and pheomelanin-based color production? A case study of two passerine species
- M. Elisio, T. Chalde and L.A. Miranda** 102 Seasonal changes and endocrine regulation of pejerrey (*Odontesthes bonariensis*) oogenesis in the wild
- A.K. Miller, B.F.N. Erasmus and G.J. Alexander** 110 Digestive efficiencies are independent of gut passage times in rainbow skinks (*Trachylepis margaritifer*)
- K. Lassiter, S. Dridi, A. Piekarski, E. Greene, B. Hargis, B.-W. Kong and W. Bottje** 115 Bioenergetics in chicken embryo fibroblast cells: Evidence of lower proton leak in spontaneously immortalized chicken embryo fibroblasts compared to young and senescent primary chicken embryo fibroblast cells
- P. Sathapondecha, S. Panyim and A. Udomkit** 124 Molecular characterization of a cDNA encoding red pigment-concentrating hormone in black tiger shrimp *Penaeus monodon*: Implication of its function in molt and osmoregulation
- A. Sanz, C.E. Trenzado, M.J. López-Rodríguez and J.M. Tierno de Figueroa** 131 Physiological strategies contributing to the coexistence of two predatory species of stoneflies: *Dinocras cephalotes* and *Perla bipunctata*
- S. Artigaud, C. Lacroix, V. Pichereau and J. Flye-Sainte-Marie** 135 Respiratory response to combined heat and hypoxia in the marine bivalves *Pecten maximus* and *Mytilus* spp.