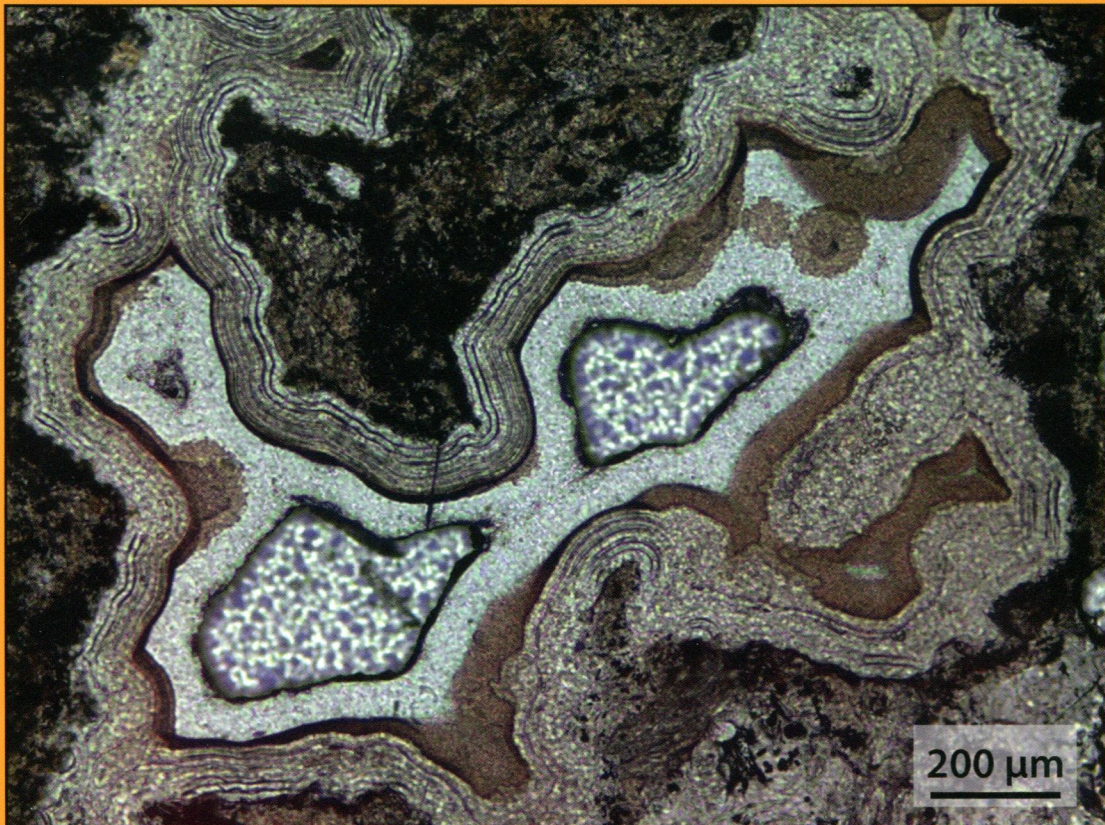


Contributions to MINERALOGY AND PETROLOGY



Contributions to Mineralogy and Petrology

Volume 168 · Number 5 · November 2014

Editorial

T.L. Grove · J. Hoefs · O. Müntener 1080

ORIGINAL PAPERS

Experimental reactions between olivine and orthopyroxene with phonolite melt: implications for the origins of hydrous amphibole + phlogopite + diopside bearing metasomatic veins

T.B. Grant · R. Milke · B. Wunder 1073

Lu–Hf garnet systematics of a polymetamorphic basement unit: new evidence for coherent exhumation of the Adula Nappe (Central Alps) from eclogite-facies conditions

S. Sandmann · T.J. Nagel · D. Herwartz · R.O.C. Fonseca · R.M. Kurzwski · C. Münker · N. Froitzheim 1075

The effect of crystallization time on plagioclase grain shape in dolerites

M.B. Holness 1076

Inferring a deep-crustal source terrane from a high-level granitic pluton: the Strathbogie Batholith, Australia

J.D. Clemens · G.N. Phillips 1070

Quaternary bimodal volcanism in the Niğde Volcanic Complex (Cappadocia, central Anatolia, Turkey): age, petrogenesis and geodynamic implications

F. Aydin · A.K. Schmitt · W. Siebel · M. Sönmez · Y. Ersoy · A. Lermi · K. Dirik · R. Duncan 1078

Hydrothermal processes in partially serpentinized peridotites from Costa Rica: evidence from native copper and complex sulfide assemblages

E.M. Schwarzenbach · E. Gazel · M.J. Caddick 1079

Mechanisms of myrmekite formation: case study from the Weinsberg granite, Moldanubian zone, Upper Austria

R. Abart · D. Heuser · G. Habler 1074

The buffering capacity of lithospheric mantle: implications for diamond formation

R.W. Luth · T. Stachel 1083

Fractional crystallization of high-K arc magmas: biotite- versus amphibole-dominated fractionation series in the Dariv Igneous Complex, Western Mongolia

C.E. Bucholz · O. Jagoutz · M.W. Schmidt · O. Sambuu 1072

Phase-equilibrium geobarometers for silicic rocks based on rhyolite-MELTS. Part 2: application to Taupo Volcanic Zone rhyolites

F. Bégué · G.A.R. Gualda · M.S. Ghiorso · A.S. Pamukcu · B.M. Kennedy · D.M. Gravley · C.D. Deering · I. Chambefort 1082

Cover Microtextures of a silica vein cross-cutting carbonated serpentine mesh under polarized light. The nature of silica ranges from amorphous-like (colloform Opal CT) near the rim of the vug to chalcedony and quartz-like at the center. (Ulrich M, Munoz M, et al. (2014) *CMP* 167: 952).

Further articles can be found at link.springer.com

Abstracted/Indexed in *Science Citation Index*, *Science Citation Index Expanded (SciSearch)*, *Journal Citation Reports/Science Edition*, *SCOPUS*, *Astrophysics Data System (ADS)*, *Chemical Abstracts Service (CAS)*, *Google Scholar*, *EBSCO*, *CSA*, *Academic OneFile*, *Academic Search*, *ASFA*, *ChemWeb*, *CSA Environmental Sciences*, *Current Contents/Physical, Chemical and Earth Sciences*, *Environment Index*, *Expanded Academic*, *Gale*, *Geobase*, *GeoRef*, *INIS Atomindex*, *International Bibliography of Book Reviews (IBR)*, *International Bibliography of Periodical Literature (IBZ)*, *OCLC*, *Referativnyi Zhurnal (VINITI)*, *SCImago*, *Summon by ProQuest*

Instructions for authors for *Contrib Mineral Petrol* are available at www.springer.com/410