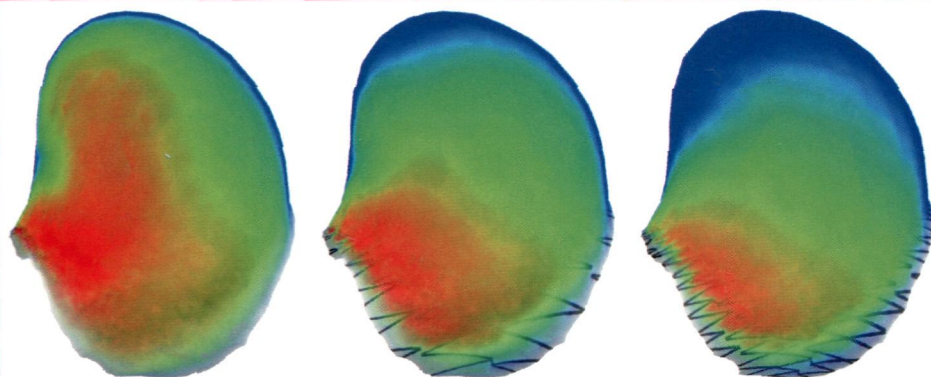


# Computational Mechanics

Editor-in-Chief:  
P. Wriggers

Editors:  
W.K. Liu  
T.E. Tezduyar  
T.I. Zohdi



No Stent

Single Stent

Double Stent

 Springer



# Computational Mechanics

Solids, Fluids, Structures, Fluid-Structure Interactions, Biomechanics, Micromechanics,  
Multiscale Mechanics, Materials, Constitutive Modeling, Nonlinear Mechanics, Aerodynamics

Volume 51 · Number 6 · June 2013

## ORIGINAL PAPERS

**A novel versatile multilayer hybrid stress solid-shell element**

K. Rah · W. Van Paepegem · J. Degrieck 825

**A 'FE-Meshfree' TRIA<sub>3</sub> element based on partition of unity for linear and geometry nonlinear analyses**

J.P. Xu · S. Rajendran 843

**A two-field modified Lagrangian formulation for robust simulations of extrinsic cohesive zone models**

F. Cazes · M. Coret · A. Combescure 865

**A fast multipole hybrid boundary node method for composite materials**

Q. Wang · Y. Miao · H. Zhu 885

**A simplified implementation of a gradient-enhanced damage model with transient length scale effects**

S. Saroukhani · R. Vafadari · A. Simone 899

**Finite element analysis of 3D elastic-plastic frictional contact problem for Cosserat materials**

S. Zhang · Z.Q. Xie · B.S. Chen · H.W. Zhang 911

**Variable-node plate and shell elements with assumed natural strain and smoothed integration methods for nonmatching meshes**

D. Sohn · S. Im 927

**Improvement of stability conditions, accuracy and uniqueness of penalty approach in contact modeling**

T. Bednarek · P. Kowalczyk 949

**A nonlocal continuum damage mechanics approach to simulation of creep fracture in ice sheets**

R. Duddu · H. Waisman 961

**Frictional mortar contact for finite deformation problems with synthetic contact kinematics · Comparison of averaged non-mortar side and non continuous mortar side normal field**

M.E. Hammer 975

**On the numerical handling of fractional viscoelastic material models in a FE analysis**

S. Müller · M. Kästner · J. Brummund · V. Ulbricht 999

**A Hermite reproducing kernel Galerkin meshfree approach for buckling analysis of thin plates**

D. Wang · H. Peng 1013

**Extended stochastic FEM for diffusion problems with uncertain material interfaces**

C. Lang · A. Doostan · K. Maute 1031

**Conformal solid T-spline construction from boundary T-spline representations**

Y. Zhang · W. Wang · T.J.R. Hughes 1051

**Patient-specific computational analysis of the influence of a stent on the unsteady flow in cerebral aneurysms**

K. Takizawa · K. Schjodt · A. Puntel · N. Kostov · T.E. Tezduyar 1061

Further articles can be found at [www.springerlink.com](http://www.springerlink.com)

Abstracted/Indexed in *Science Citation Index*, *Science Citation Index Expanded (SciSearch)*, *SCOPUS*, *Astrophysics Data System (ADS)*, *Zentralblatt Math*, *Google Scholar*, *EBSCO*, *Academic OneFile*, *Academic Search*, *ACM Digital Library*, *ASFA*, *Current Abstracts*, *Current Contents/Engineering, Computing and Technology*, *Current Mathematical Publications*, *Digital Mathematics Registry*, *EI-Compendex*, *Gale*, *Journal Citation Reports/Science Edition*, *Mathematical Reviews*, *OCLC*, *SCImago*, *Summon by Serial Solutions*, *VINITI - Russian Academy of Science*

Instructions for Authors for *Comput Mech* are available at [www.springer.com/466](http://www.springer.com/466)