



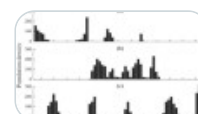
22 articles in this issue

Lichenological Studies in the Serebryanoborsky Experimental Forestry: History, Results, and Future Prospects



OriginalPaper | 14 January 2026 | Pages: 985 - 994

Study of Phyllophagous Insects in the Oak Stands of the Tellerman Forest Massif



OriginalPaper | 14 January 2026 | Pages: 995 - 1006

Aftermath of Fires for Mesophytic Forest Soils in the Western Caucasus



OriginalPaper | 14 January 2026 | Pages: 1007 - 1015

Sapwood Density of Scotch Pine in Transvolga Forests of the Mari El Republic



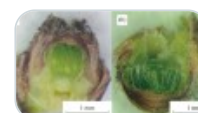
OriginalPaper | 14 January 2026 | Pages: 1016 - 1025

Analyzing the Transformation of Forest Litter Organic Matter at Different Stages of Secondary Succession of a Middle Taiga Forest Using the IR Fourier Spectrometry Methods



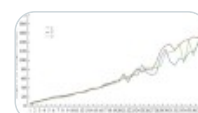
OriginalPaper | 14 January 2026 | Pages: 1026 - 1038

Physiological and Biochemical Characteristics of Vegetative Buds of Siberian Larch Growing in the Conditions of the Middle Taiga Subzone of the Komi Republic



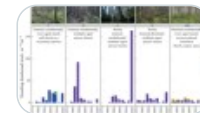
OriginalPaper | 14 January 2026 | Pages: 1039 - 1046

Height–Age Structure of *Picea abies* Undergrowth in a Middle Taiga Spruce Forest: Microsite Influence



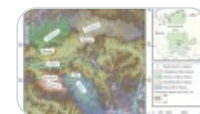
OriginalPaper | 14 January 2026 | Pages: 1047 - 1060

Amount and Fall Rates of Snags in the Primeval Middle Boreal Spruce Forests of the Vepssky Forest Reserve



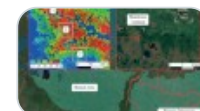
OriginalPaper | 14 January 2026 | Pages: 1061 - 1070

Runoff Dynamics in Catchment Areas with Forest Cover Disturbed by Cutting in the Angara River Basin



OriginalPaper | 14 January 2026 | Pages: 1071 - 1082

A Comparison of Methodological Approaches for Measuring Tree Height and Crown Projection in Middle Taiga Forest Using UAV LIDAR Data



OriginalPaper | 14 January 2026 | Pages: 1083 - 1094

Definition Criteria and Stand Structure in the Old-Growth Forests of the Altai Mountains



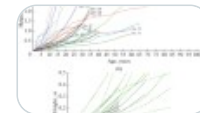
OriginalPaper | 14 January 2026 | Pages: 1095 - 1108

Evapotranspiration in Northern Taiga Forests of the Nizhnyaya Tunguska River Basin Factoring in Their Postfire Dynamics



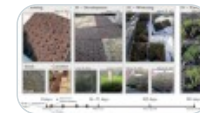
OriginalPaper | 14 January 2026 | Pages: 1109 - 1118

Development Polyvariance of the Siberian Fir's Undergrowth in Dark-Coniferous Forests of the Northern Pre-Urals



OriginalPaper | 14 January 2026 | Pages: 1119 - 1131

Efficiency of Prolonged-Release Mineral Fertilizers when Growing Scots Pine Seedlings with Closed Root Systems in Cell Packs



OriginalPaper | 14 January 2026 | Pages: 1132 - 1140

Identification of Half-Sib Progeny of Elite Pedunculate Oak Trees in Tambov Oblast Using Geometric Morphometry Methods



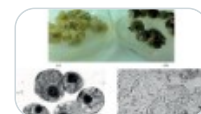
OriginalPaper | 14 January 2026 | Pages: 1141 - 1146

Selection Assessment and Reproduction of the Pedunculate Oak Gene Pool Assigned for Afforestation in the Lower Volga Region



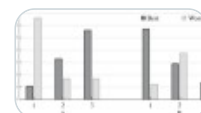
OriginalPaper | 14 January 2026 | Pages: 1147 - 1159

Selection of Birch Trees towards Resilience against High Salinity Based on Cells Heterogeneity in Callus Cultures of an In Vitro Collection



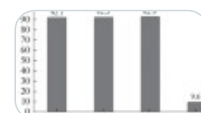
OriginalPaper | 14 January 2026 | Pages: 1160 - 1171

Water-Retaining Capacity of Needles of Scots Pine Clones in Forest-Steppe Conditions



OriginalPaper | 14 January 2026 | Pages: 1172 - 1181

Resilience of Scotch Pine Trees to Drought at Different Reproductive and Life Stages



OriginalPaper | 14 January 2026 | Pages: 1182 - 1190

Variability of Microsatellite Loci in Clone Archives and Test Crops of Scotch Pine in Northern Kazakhstan



OriginalPaper | 14 January 2026 | Pages: 1191 - 1199

Silvicultural and Selection Features of Scots Pine Elite Stands in the Republic of Karelia



OriginalPaper | 14 January 2026 | Pages: 1200 - 1211

Delayed Incompatibility of Siberian and Swiss Pine Grafts on Scots Pine in Krasnoyarsk Forest Steppe



OriginalPaper | 14 January 2026 | Pages: 1212 - 1222
