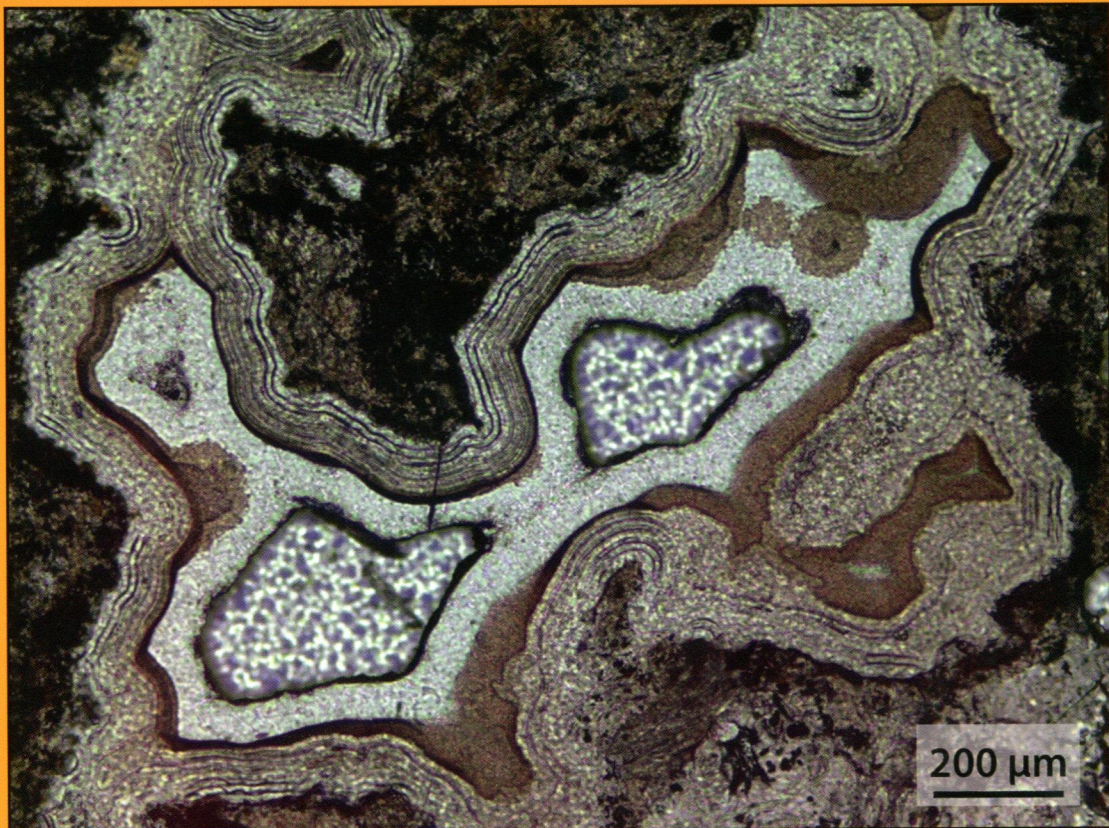


Contributions to MINERALOGY AND PETROLOGY



Contributions to Mineralogy and Petrology

Volume 168 · Number 6 · December 2014

ORIGINAL PAPERS

Localization of submicron inclusion re-equilibration at healed fractures in host garnet

T.A. Griffiths · G. Habler · D. Rhede · R. Wirth · F. Ram · R. Abart 1077

Fred's Flow (Canada) and Murphy Well (Australia): thick komatiitic lava flows with contrasting compositions, emplacement mechanisms and water contents

C. Siégel · N. Arndt · S. Barnes · A.-L. Henriot · P. Haenecour · V. Debaille · N. Mattielli 1084

Origin of sub-lithospheric diamonds from the Juina-5 kimberlite (Brazil): constraints from carbon isotopes and inclusion compositions

A.R. Thomson · S.C. Kohn · G.P. Bulanova · C.B. Smith · D. Araujo · EIMF · M.J. Walter 1081

Water contents of Roberts Victor xenolithic eclogites: primary and metasomatic controls

J.-X. Huang · P. Li · W.L. Griffin · Q.-K. Xia · Y. Gréau · N.J. Pearson · S.Y. O'Reilly 1092

Assessing the origin of old apparent ages derived by Pb stepwise leaching of vein-hosted epidote from Mount Isa, northwest Queensland, Australia

R.J. Duncan · R. Maas 1085

Controls on solid-phase inclusion during porphyroblast growth: insights from the Barrovian sequence (Scottish Dalradian)

K. Farber · M.J. Caddick · T. John 1089

Settling and compaction of chromite cumulates employing a centrifuging piston cylinder and application to layered mafic intrusions

S. Manoochchri · M.W. Schmidt 1091

Multistage growth of Fe–Mg–carpholite and Fe–Mg–chloritoid, from field evidence to thermodynamic modelling

A. Pourteau · R. Bousquet · O. Vidal · A. Plunder · E. Duisterhoeft · O. Candan · R. Oberhänsli 1090

ERRATA

Erratum to: Editorial

T.L. Grove · J. Hoefs · O. Müntener 1087

Erratum to: Melts of garnet lherzolite: experiments, models and comparison to melts of pyroxenite and carbonated lherzolite

T.L. Grove · E.S. Holbig · J.A. Barr · C.B. Till · M.J. Krawczynski 1086

Cover Microtextures of a silica vein cross-cutting carbonated serpentine mesh under polarized light. The nature of silica ranges from amorphous-like (colloform Opal CT) near the rim of the vug to chalcedony and quartz-like at the center. (Ulrich M, Munoz M, et al. (2014) *CMP* 167: 952).

Further articles can be found at link.springer.com

Abstracted/Indexed in *Science Citation Index*, *Science Citation Index Expanded (SciSearch)*, *Journal Citation Reports/Science Edition*, *SCOPUS*, *Astrophysics Data System (ADS)*, *Chemical Abstracts Service (CAS)*, *Google Scholar*, *EBSCO*, *CSA*, *Academic OneFile*, *Academic Search*, *ASFA*, *ChemWeb*, *CSA Environmental Sciences*, *Current Contents/Physical, Chemical and Earth Sciences*, *Environment Index*, *Expanded Academic*, *Gale*, *Geobase*, *GeoRef*, *INIS Atomindex*, *International Bibliography of Book Reviews (IBR)*, *International Bibliography of Periodical Literature (IBZ)*, *OCLC*, *Referativnyi Zhurnal (VINITI)*, *SCImago*, *Summon by ProQuest*

Instructions for authors for *Contrib Mineral Petrol* are available at www.springer.com/410