



Volume 522, Issue 3

July 2025



30 articles in this issue

Active Faults, Seismicity, and Traces of Past Large Earthquakes in the Okhotsk-Kolyma Region

V. N. SmirnovO. Yu. Glushkova

LANDSCAPES AND LANDFORMS OF THE RUSSIAN FAR EAST | 26 June 2025 |

Article: 76



Glacial Paleo-Landforms in the Northern Okhotsk Region

O. Yu. GlushkovaV. N. Smirnov

LANDSCAPES AND LANDFORMS OF THE RUSSIAN FAR EAST | 26 June 2025 |

Article: 75



Unique Deposits of Volcanic Ash in the Okhotsk-Kolyma Region

O. Yu. GlushkovaV. N. Smirnov

LANDSCAPES AND LANDFORMS OF THE RUSSIAN FAR EAST | 26 June 2025 |

Article: 74

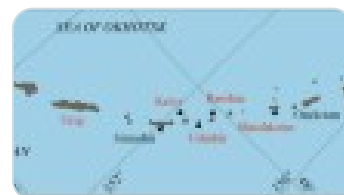


Thermal Fields and Springs of the Kuril Islands

E. Kalacheva

LANDSCAPES AND LANDFORMS OF THE RUSSIAN FAR EAST | 26 June 2025 |

Article: 73



Kamchatka Peninsula—Where Island Arcs Meet

E. Zelenin

LANDSCAPES AND LANDFORMS OF THE RUSSIAN FAR EAST | 26 June 2025 |

Article: 72



Geomorphosites of the Kamchatka Peninsula

E. Zelenin

LANDSCAPES AND LANDFORMS OF THE RUSSIAN FAR EAST | 26 June 2025 |

Article: 71



Volcanic Chain of the Kurils

E. ZeleninE. Shalaeva

LANDSCAPES AND LANDFORMS OF THE RUSSIAN FAR EAST | 26 June 2025 |

Article: 70

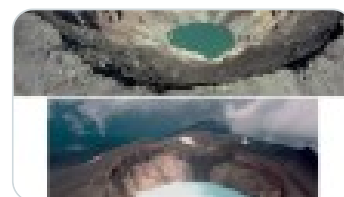


Volcanic Lakes of the Russian Far East: Current State and Development Features

D. N. KozlovE. V. Lebedeva

LANDSCAPES AND LANDFORMS OF THE RUSSIAN FAR EAST | 26 June 2025 |

Article: 69



Transformation of the Valley of Geysers (Kamchatka)—One of the Largest Geysers Fields in the World

E. V. LebedevaA. V. ZavadskayaV. M. Sugrobov

LANDSCAPES AND LANDFORMS OF THE RUSSIAN FAR EAST | 26 June 2025 |

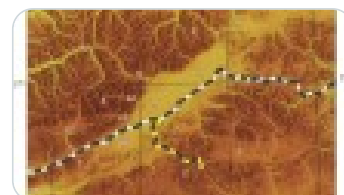
Article: 68



Relief of the Central Part of the Rift Stanovoe Upland

A. A. Lukashov

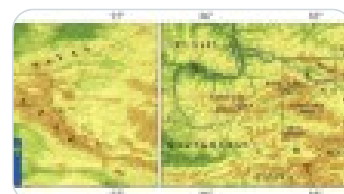
LANDSCAPES AND LANDFORMS OF SIBERIA | 26 June 2025 | Article: 67



Landscape and Climate Changes in the SE Altai during the Last 20 Thousand Years in Context of Its Human Occupation

A. AgatovaRoman Nepop

LANDSCAPES AND LANDFORMS OF SIBERIA | 26 June 2025 | Article: 66



Alases of Central Yakutia—The Cradle of the Northernmost Cattle Breeding Center near the Pole of Cold

R. Desyatkin

LANDSCAPES AND LANDFORMS OF SIBERIA | 26 June 2025 | Article: 65



Patom Crater: History of Discovery and Research, Hypotheses of Origin

D. Yu. Demezhko

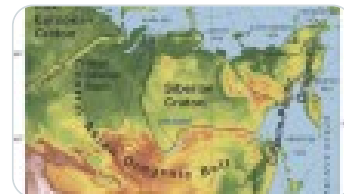
LANDSCAPES AND LANDFORMS OF SIBERIA | 26 June 2025 | Article: 64



Tectonic History and Geological Setting of Asian Russia

E. ZeleninS. Garipova

GENERAL OVERVIEW | 26 June 2025 | Article: 63



Landscapes and Landforms of Siberia and Russian Far East (Editorial)

S. K. KrivonogovA. V. Panin

GENERAL OVERVIEW | 26 June 2025 | Article: 62



Contrasting Landforms and Exogenous Processes in the Lower Amur Region

A. N. Makhinov

LANDSCAPES AND LANDFORMS OF THE RUSSIAN FAR EAST | 26 June 2025 | Article: 61



Sakhalin—A Deceptive Calm (Hazardous Endogenic and Exogenic Landforms)

V. V. ErshovE. V. LebedevaN. A. Kazakov

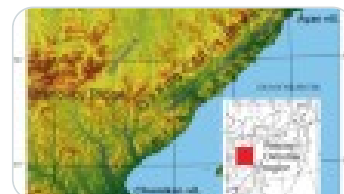
LANDSCAPES AND LANDFORMS OF THE RUSSIAN FAR EAST | 26 June 2025 | Article: 60



River Valleys of the Western Okhotsk Region: Changes in the Drainage Network Pattern and River Flow Direction

E. V. LebedevaA. V. Bredikhin

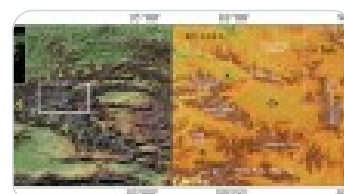
LANDSCAPES AND LANDFORMS OF THE RUSSIAN FAR EAST | 26 June 2025 | Article: 59



Landscapes of High Mountainous Basins of SW Tuva: From Pleistocene Catastrophes to Holocene Gradual Development

R. K. NepopA. R. Agatova

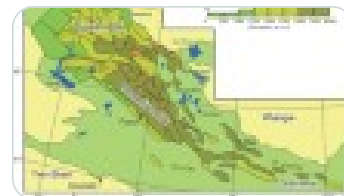
LANDSCAPES AND LANDFORMS OF SIBERIA | 26 June 2025 | Article: 58



Tectonic Relief of Russian Altai

I. NovikovG. RusanovR. Nepop

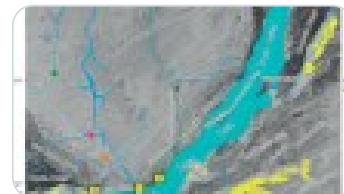
LANDSCAPES AND LANDFORMS OF SIBERIA | 26 June 2025 | Article: 57



Quaternary History of Lake Baikal: Water Level Fluctuations and Outlet Formation

S. G. ArzhannikovA. V. Arzhannikova

LANDSCAPES AND LANDFORMS OF SIBERIA | 26 June 2025 | Article: 56



Darhad Megaflood Landscape

S. G. ArzhannikovA. V. Arzhannikova

LANDSCAPES AND LANDFORMS OF SIBERIA | 26 June 2025 | Article: 55



The Sayan-Tuva Upland: Quaternary Glaciers and Volcanoes

S. G. ArzhannikovA. V. Arzhannikova

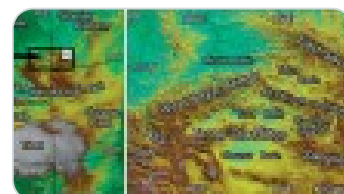
LANDSCAPES AND LANDFORMS OF SIBERIA | 26 June 2025 | Article: 54



Active Faults and Large Paleoearthquakes of the Sayan-Tuva Upland

S. G. ArzhannikovA. V. ArzhannikovaA. A. Chebotarev

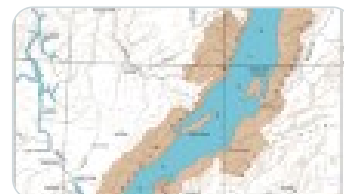
LANDSCAPES AND LANDFORMS OF SIBERIA | 26 June 2025 | Article: 53



Geodiversity and Geomorphosites of the Baikal Rift Zone

T. M. SkovitinaA. A. ShchetnikovA. B. Kotov

LANDSCAPES AND LANDFORMS OF SIBERIA | 26 June 2025 | Article: 52



Tunka Valley—A Unique Geomorphological Polygon of the Baikal Rift System

A. A. Shchetnikov

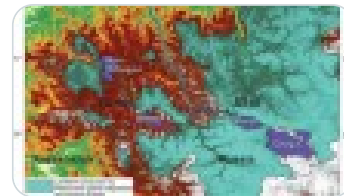
LANDSCAPES AND LANDFORMS OF SIBERIA | 26 June 2025 | Article: 51



Giant Pleistocene Ice-Dammed Lakes of Gorny Altai

I. D. ZolnikovE. V. Deev

LANDSCAPES AND LANDFORMS OF SIBERIA | 26 June 2025 | Article: 50



The Gorny Altai Active Seismic Area: Traces of Modern and Past Earthquakes in Surface Features and Sediments (Overview)

E. V. Deev

LANDSCAPES AND LANDFORMS OF SIBERIA | 26 June 2025 | Article: 49



Pleistocene Glaciations and Megafloods in West Siberia (Gorny Altai and West Siberian Plain)

I. D. ZolnikovE. V. Deev

LANDSCAPES AND LANDFORMS OF SIBERIA | 26 June 2025 | Article: 48



Landforms Recognized at the World Natural Heritage Sites (Siberia and the Russian Far East)

A. A. ButorinE. V. TrofimovaN. V. Maksakovskiy

GENERAL OVERVIEW | 26 June 2025 | Article: 47

