

March 2014

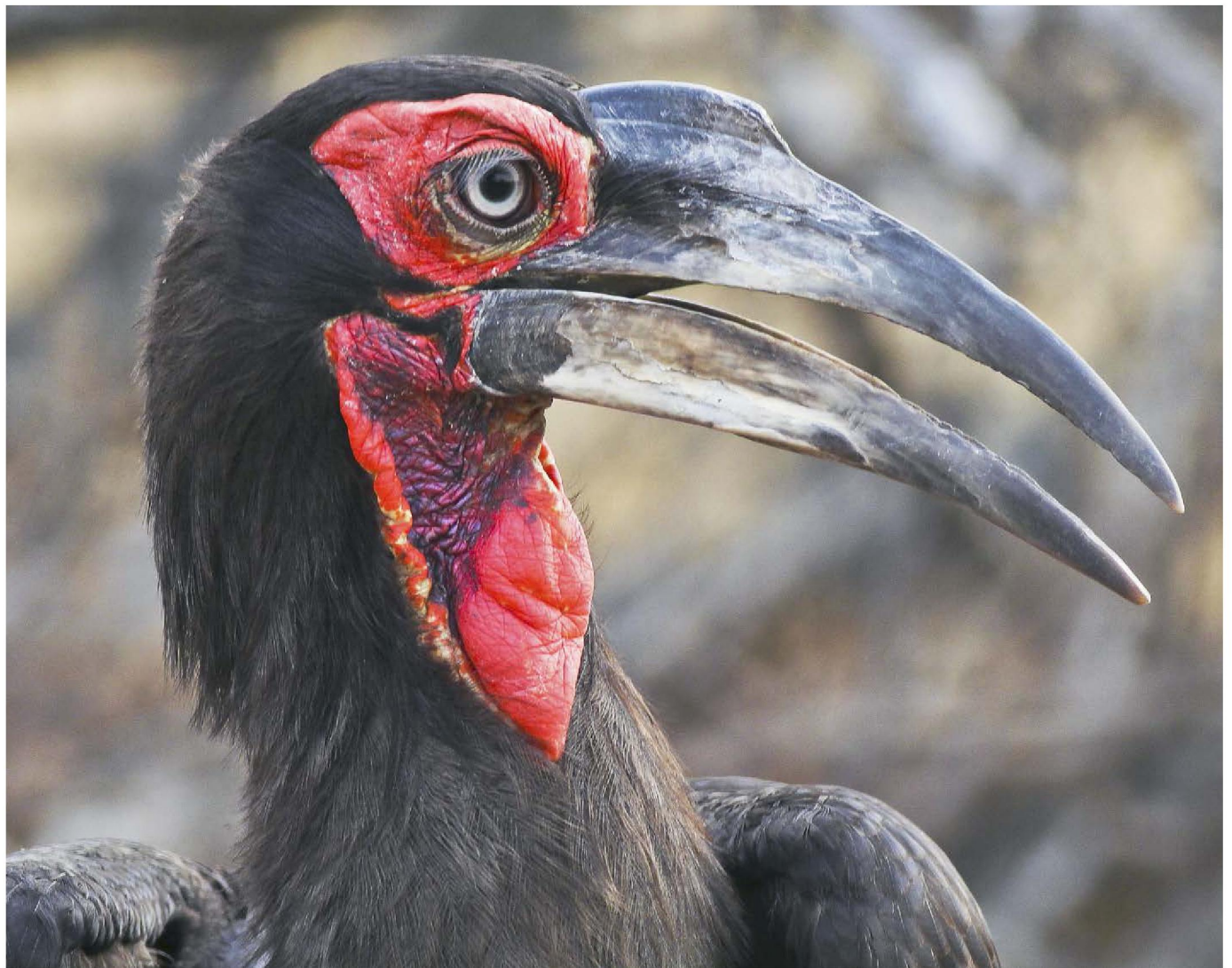
esa

Volume 24 No. 2

# Ecological

APPLICATIONS

A PUBLICATION OF THE ECOLOGICAL SOCIETY OF AMERICA



## **Articles**

Cross-ecosystem impacts of stream pollution reduce resource and contaminant flux to riparian food webs

Advancing the use of local ecological knowledge for assessing data-poor species in coastal ecosystems

Spatial occupancy models applied to atlas data show Southern Ground Hornbills strongly depend on protected areas

**Cross-ecosystem impacts of stream pollution reduce resource and contaminant flux to riparian food webs**

Johanna M. Kraus, Travis S. Schmidt, David M. Walters, Richard B. Wanty, Robert E. Zuellig, and Ruth E. Wolf

Ecological Applications 2014 24:2, 235-243

---

**Advancing the use of local ecological knowledge for assessing data-poor species in coastal ecosystems**

Anne H. Beaudreau and Phillip S. Levin

Ecological Applications 2014 24:2, 244-256

---

**Beyond connectivity: how empirical methods can quantify population persistence to improve marine protected-area design**

Scott C. Burgess, Kerry J. Nickols, Chris D. Griesemer, Lewis A. K. Barnett, Allison G. Dedrick, Erin V. Satterthwaite, Lauren Yamane, Steven G. Morgan, J. Wilson White, and Louis W. Botsford

Ecological Applications 2014 24:2, 257-270

---

**Effect of eastern oysters (*Crassostrea virginica*) on sediment carbon and nitrogen dynamics in an urban estuary**

Timothy J. Hoellein and Chester B. Zarnoch

Ecological Applications 2014 24:2, 271-286

---

**Congruence in demersal fish, macroinvertebrate, and macroalgal community turnover on shallow temperate reefs**

Russell J. Thomson, Nicole A. Hill, Rebecca Leaper, Nick Ellis, C. Roland Pitcher, Neville S. Barrett, and Graham J. Edgar

Ecological Applications 2014 24:2, 287-299

---

**How much is too much? Identifying benchmarks of adverse effects of macroalgae on the macrofauna in intertidal flats**

Lauri Green, Martha Sutula, and Peggy Fong

Ecological Applications 2014 24:2, 300-314

---

**Rigorous meta-analysis of life history correlations by simultaneously analyzing multiple population dynamics models**

James T. Thorson, Ian G. Taylor, Ian J. Stewart, and André E. Punt

Ecological Applications 2014 24:2, 315-326

---

**Landscape genetics as a tool for conservation planning: predicting the effects of landscape change on gene flow**

Maarten J. van Strien, Daniela Keller, Rolf Holderegger, Jaboury Ghazoul, Felix Kienast, and Janine Bolliger

Ecological Applications 2014 24:2, 327-339

---

**Experimental canopy removal enhances diversity of vernal pond amphibians**

David K. Skelly, Susan R. Bolden, and L. Kealoha Freidenburg

Ecological Applications 2014 24:2, 340-345

---

**Integrating population- and individual-level information in a movement model of Yellowstone bison**

C. Geremia, P. J. White, J. A. Hoeting, R. L. Wallen, F. G. R. Watson, D. Blanton, and N. T. Hobbs

Ecological Applications 2014 24:2, 346-362

---

**Spatial occupancy models applied to atlas data show Southern Ground Hornbills strongly depend on protected areas**

Kristin M. Broms, Devin S. Johnson, Res Altwegg, and Loveday L. Conquest  
Ecological Applications 2014 24:2, 363-374

---

**Long-lived organisms provide an integrative footprint of agricultural land use**

Carla L. Atkinson, Alan D. Christian, Daniel E. Spooner, and Caryn C. Vaughn  
Ecological Applications 2014 24:2, 375-384

---

**Mapping habitat suitability for at-risk plant species and its implications for restoration and reintroduction**

Erin J. Questad, James R. Kellner, Kealoha Kinney, Susan Cordell, Gregory P. Asner, Jarrod Thaxton, Jennifer Diep, Amanda Uowolo, Sam Brooks, Nikhil Inman-Narahari, Steven A. Evans, and Brian Tucker  
Ecological Applications 2014 24:2, 385-395

---

**Variable wind, pack ice, and prey dispersion affect the long-term adequacy of protected areas for an Arctic sea duck**

James R. Lovvorn, Eric M. Anderson, Ariel R. Rocha, William W. Larned, Jacqueline M. Grebmeier, Lee W. Cooper, Jason M. Kolts, and Christopher A. North  
Ecological Applications 2014 24:2, 396-412

---

**Adaptive responses reveal contemporary and future ecotypes in a desert shrub**

Bryce A. Richardson, Stanley G. Kitchen, Rosemary L. Pendleton, Burton K. Pendleton, Matthew J. Germino, Gerald E. Rehfeldt, and Susan E. Meyer  
Ecological Applications 2014 24:2, 413-427