

June 2014

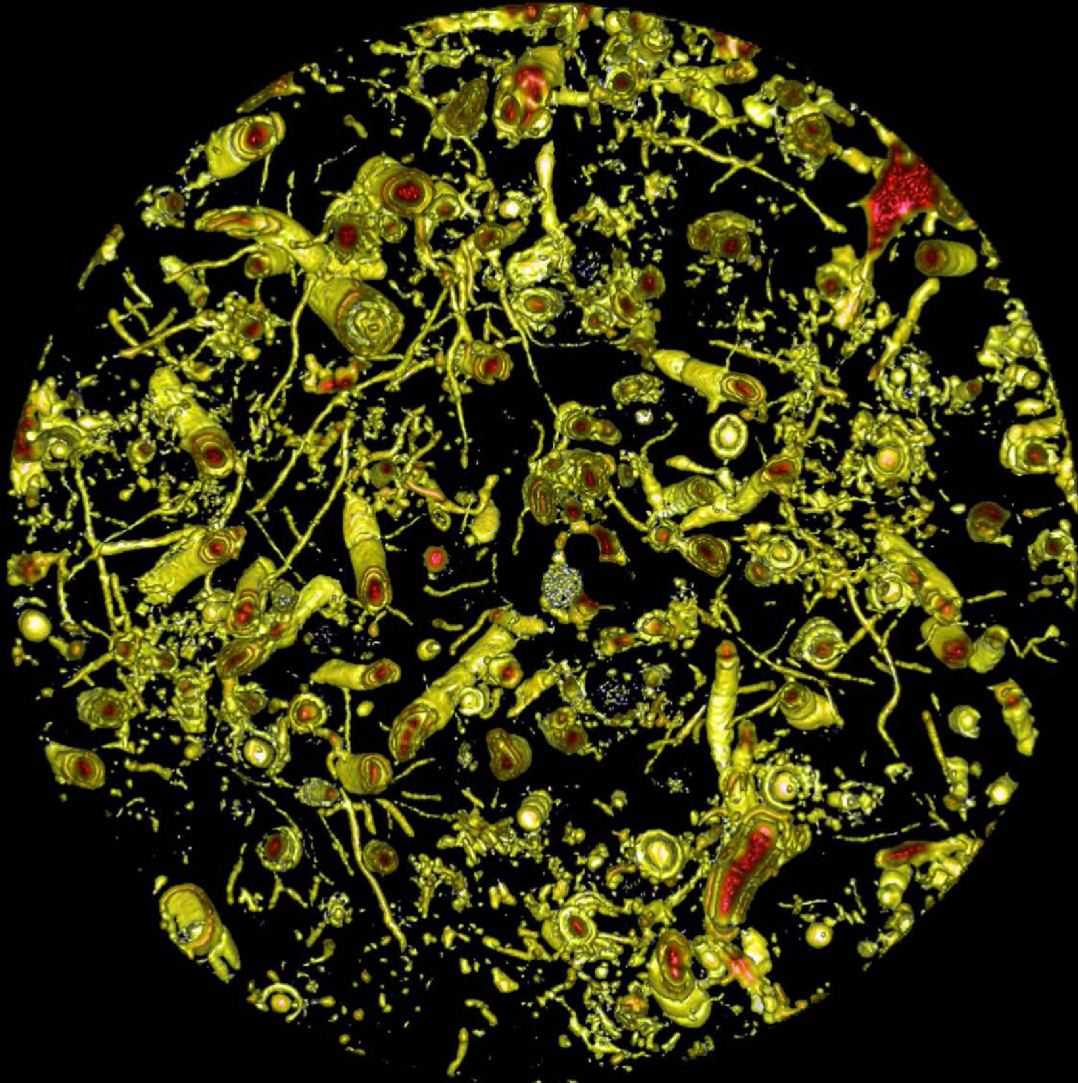
esa

Volume 24 No. 4

Ecological

APPLICATIONS

A PUBLICATION OF THE ECOLOGICAL SOCIETY OF AMERICA



Communications

Novel opportunities for wildlife conservation and research with real-time monitoring

Articles

Continental-scale, seasonal movements of a heterothermic migratory tree bat
Below the disappearing marshes of an urban estuary: historic nitrogen trends and
soil structure

A generic risk-based surveying method for invading plant pathogens

Novel opportunities for wildlife conservation and research with real-time monitoring

Jake Wall, George Wittemyer, Brian Klinkenberg, and Iain Douglas-Hamilton
Ecological Applications 2014 24:4, 593-601

Continental-scale, seasonal movements of a heterothermic migratory tree bat

Paul M. Cryan, Craig A. Stricker, and Michael B. Wunder
Ecological Applications 2014 24:4, 602-616

Is there any empirical support for biodiversity offset policy?

Michael Curran, Stefanie Hellweg, and Jan Beck
Ecological Applications 2014 24:4, 617-632

Below the disappearing marshes of an urban estuary: historic nitrogen trends and soil structure

Cathleen Wigand, Charles T. Roman, Earl Davey, Mark Stolt, Roxanne Johnson, Alana Hanson, Elizabeth B. Watson, S. Bradley Moran, Donald R. Cahoon, James C. Lynch, and Patricia Rafferty
Ecological Applications 2014 24:4, 633-649

Wetland characteristics influence disease risk for a threatened amphibian

Geoffrey W. Heard, Michael P. Scroggie, Nick Clemann, and David S. L. Ramsey
Ecological Applications 2014 24:4, 650-662

Disturbance, life history traits, and dynamics in an old-growth forest landscape of southeastern Europe

Thomas A. Nagel, Miroslav Svoboda, and Milan Kobal
Ecological Applications 2014 24:4, 663-679

The importance of crown dimensions to improve tropical tree biomass estimates

Rosa C. Goodman, Oliver L. Phillips, and Timothy R. Baker
Ecological Applications 2014 24:4, 680-698

Confronting terrestrial biosphere models with forest inventory data

Jeremy W. Lichstein, Ni-Zhang Golaz, Sergey Malyshev, Elena Shevliakova, Tao Zhang, Justin Sheffield, Richard A. Birdsey, Jorge L. Sarmiento, and Stephen W. Pacala
Ecological Applications 2014 24:4, 699-715

Carbon storage landscapes of lowland Hawaii: the role of native and invasive species through space and time

R. Flint Hughes, Gregory P. Asner, Joseph Mascaro, Amanda Uowolo, and James Baldwin
Ecological Applications 2014 24:4, 716-731

Wildfire and drought dynamics destabilize carbon stores of fire-suppressed forests

J. Mason Earles, Malcolm P. North, and Matthew D. Hurteau
Ecological Applications 2014 24:4, 732-740

Native and domestic browsers and grazers reduce fuels, fire temperatures, and acacia ant mortality in an African savanna

Duncan M. Kimuyu, Ryan L. Sensenig, Corinna Riginos, Kari E. Veblen, and Truman P. Young
Ecological Applications 2014 24:4, 741-749

Native tree species regulate nitrous oxide fluxes in tropical plantations

Samantha R. Weintraub, Ann E. Russell, and Alan R. Townsend
Ecological Applications 2014 24:4, 750-758

Do plant defenses predict damage by an invasive herbivore? A comparative study of the viburnum leaf beetle

Gaylord A. Desurmont and Anurag A. Agrawal
Ecological Applications 2014 24:4, 759-769

Deconstructing the surrogate species concept: a life history approach to the protection of ecosystem services

John E. Banks, John D. Stark, Roger I. Vargas, and Azmy S. Ackleh
Ecological Applications 2014 24:4, 770-778

A generic risk-based surveying method for invading plant pathogens

S. Parnell, T. R. Gottwald, T. Riley, and F. van den Bosch
Ecological Applications 2014 24:4, 779-790

Geographic coincidence of richness, mass, conservation value, and response to climate of U.S. land birds

Ralph Grundel, Krystalynn J. Frohnapple, David N. Zaya, Gary A. Glowacki, Chelsea J. Weiskerger, Tamatha A. Patterson, and Noel B. Pavlovic
Ecological Applications 2014 24:4, 791-811

Soil mercury and its response to atmospheric mercury deposition across the northeastern United States

Xue Yu, Charles T. Driscoll, Richard A. F. Warby, Mario Montesdeoca, and Chris E. Johnson
Ecological Applications 2014 24:4, 812-822

Downscaling the environmental associations and spatial patterns of species richness

Petr Keil and Walter Jetz
Ecological Applications 2014 24:4, 823-831

Implementation of marine spatial planning in shellfish aquaculture management: modeling studies in a Norwegian fjord

Ramón Filgueira, Jon Grant, and Øivind Strand
Ecological Applications 2014 24:4, 832-843

Habitat modeling in high-gradient streams: the mesoscale approach and application

Paolo Vezza, Piotr Parasiewicz, Michele Spairani, and Claudio Comoglio
Ecological Applications 2014 24:4, 844-861

Predictive modeling of marine benthic macrofauna and its use to inform spatial monitoring design

Michael Dowd, Jon Grant, and Lin Lu
Ecological Applications 2014 24:4, 862-876

Bycatch, bait, anglers, and roads: quantifying vector activity and propagule introduction risk across lake ecosystems

D. Andrew R. Drake and Nicholas E. Mandrak
Ecological Applications 2014 24:4, 877-894

The interactive effects of climate change, riparian management, and a nonnative predator on stream-rearing salmon

David J. Lawrence, Ben Stewart-Koster, Julian D. Olden, Aaron S. Ruesch, Christian E. Torgersen, Joshua J. Lawler, Don P. Butcher, and Julia K. Crown
Ecological Applications 2014 24:4, 895-912