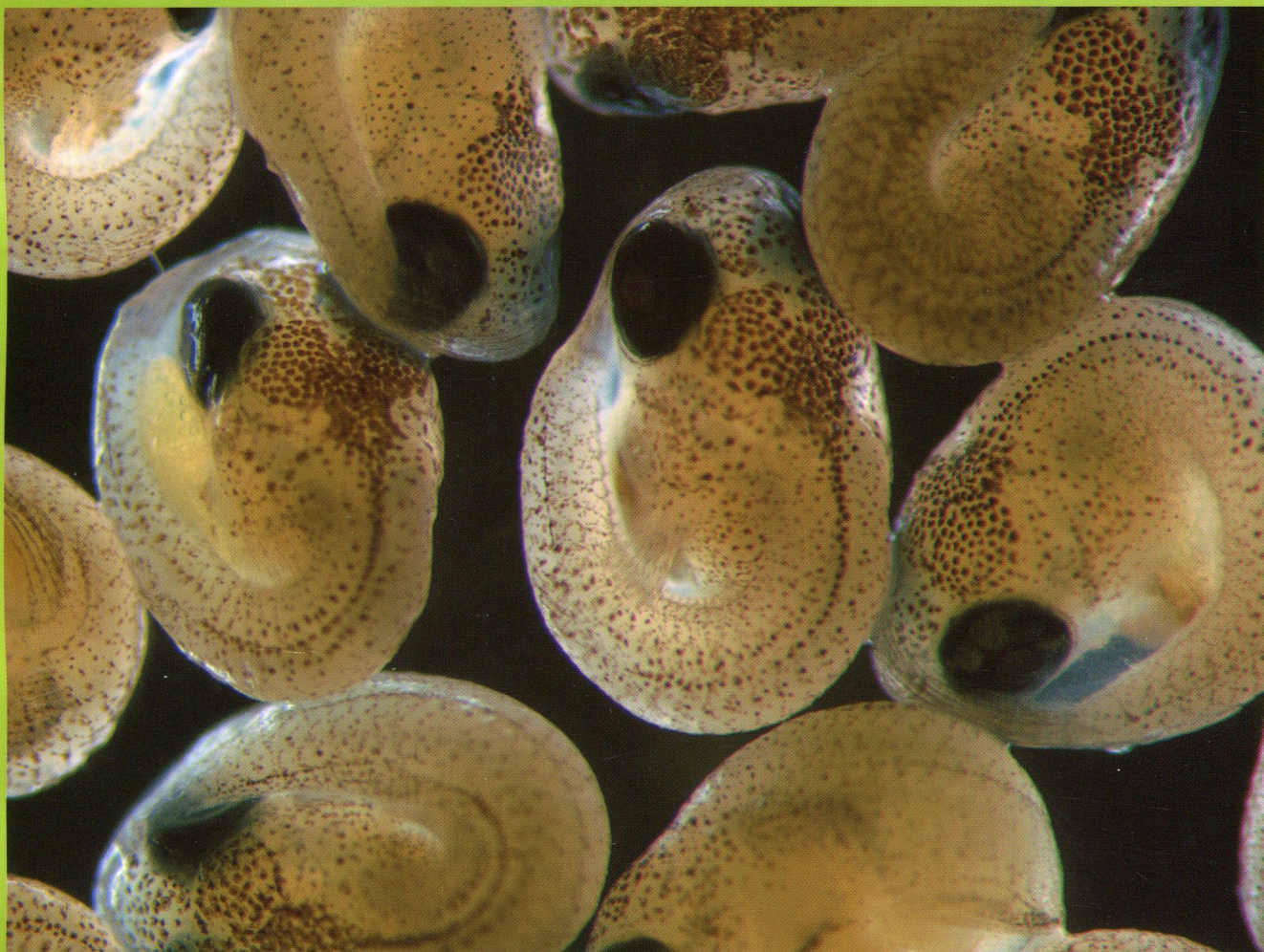


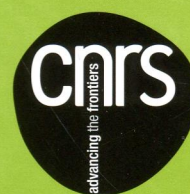
K/35

# ECOLOGY LETTERS

Volume 17 Number 1 | January 2014



WILEY  
Blackwell



ISSN 1461-023X [www.ecologyletters.com](http://www.ecologyletters.com)

## Review and Synthesis

- 1 What explains variation in the impacts of exotic plant invasions on the nitrogen cycle? A meta-analysis  
*P. Castro-Díez, O. Godoy, A. Alonso, A. Gallardo & A. Saldaña*

## Letters

- 13 Early origin of viviparity and multiple reversions to oviparity in squamate reptiles  
*R. Alexander Pyron & Frank T. Burbrink*
- 22 The maintenance of mitochondrial genetic variation by negative frequency-dependent selection  
*Erem Kazancıoğlu & Göran Arnqvist*
- 28 Optimal control of population recovery – the role of economic restoration threshold  
*Adam Lampert & Alan Hastings*
- 36 Unimodal response of fish yield to dissolved organic carbon  
*Anders G. Finstad, Ingeborg P. Helland, Ola Ugedal, Trygve Hesthagen & Dag O. Hessen*
- 44 Volatile communication between plants that affects herbivory: a meta-analysis  
*Richard Karban, Louie H. Yang & Kyle F. Edwards*
- 53 Dispersal, landscape and travelling waves in cyclic vole populations  
*Karine Berthier, Sylvain Piry, Jean-François Cosson, Patrick Giraudoux, Jean-Christophe Foltête, Régis Default, Denis Truchetet & Xavier Lambin*
- 65 Colonisation of toxic environments drives predictable life-history evolution in livebearing fishes (Poeciliidae)  
*Rüdiger Riesch, Martin Plath, Ingo Schlupp, Michael Tobler & R. Brian Langerhans*
- 72 The contribution of intra- and interspecific tolerance variability to biodiversity changes along toxicity gradients  
*Frederik De Laender, Carlos J. Melian, Richard Bindler, Paul J. Van den Brink, Michiel Daam, Helene Roussel, Jonas Juselius, Dirk Verschuren & Colin R. Janssen*

- 82 Balancing the costs of carbon gain and water transport: testing a new theoretical framework for plant functional ecology  
*I. Colin Prentice, Ning Dong, Sean M. Gleason, Vincent Maire & Ian J. Wright*
- 92 Invaded grassland communities have altered stability-maintenance mechanisms but equal stability compared to native communities  
*Brian J. Wilsey, Pedram P. Daneshgar, Kirsten Hofmockel & H. Wayne Polley*

## Ideas and Perspectives

- 101 Understanding patterns and processes in models of trophic cascades  
*Michael R. Heath, Douglas C. Speirs & John H. Steele*
- 115 Historical contingency in species interactions: towards niche-based predictions  
*Rachel L. Vannette & Tadashi Fukami*

## Abstracts of Technical Comments

- 125 Beyond realism in climate change experiments: gradient approaches identify thresholds and tipping points  
*Juergen Kreyling, Anke Jenisch & Claus Beier*
- 125 Moving beyond methods: the need for a diverse programme in climate change research  
*Ross M. Thompson, John Beardall, Jason Beringer, Mike Grace & Paula Sardina*

The full papers can be accessed online at [www.ecologyletters.com](http://www.ecologyletters.com)

### Cover Caption:

Ready-to-be-born embryos of Western mosquitofish, *Gambusia affinis*, from Oklahoma

Photo credit: Rüdiger Riesch

From: Riesch *et al.*, p. 65