

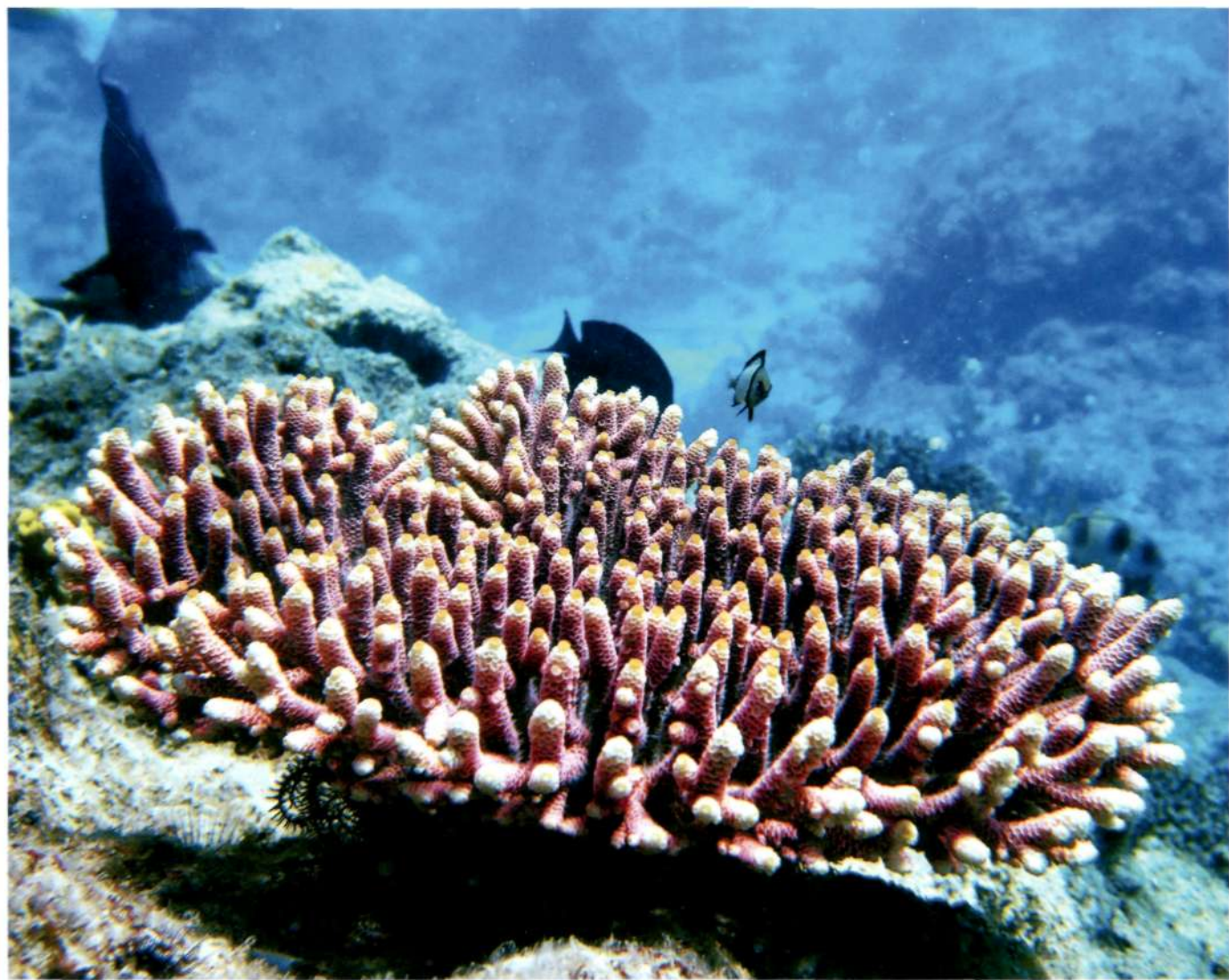
May 2013

esa

Volume 94 No. 5

ECOLOGY

A PUBLICATION OF THE ECOLOGICAL SOCIETY OF AMERICA



Articles

Do invasive species perform better in their new ranges?

Historical thermal regimes define limits to coral acclimatization

Additive effects of physical stress and herbivores on intertidal seaweed biodiversity

Does exogenous carbon extend the realized niche of canopy lichens? Evidence from sub-boreal forests in British Columbia



Volume 94, Issue 5 (May 2013)

Articles

985 **Do invasive species perform better in their new ranges?**

John D. Parker, Mark E. Torchin, Ruth A. Hufbauer, Nathan P. Lemoine, Christina Alba, Dana M. Blumenthal, Oliver Bossdorf, James E. Byers, Alison M. Dunn, Robert W. Heckman, Martin Hejda, Vojtěch Jarošík, Andrew R. Kanarek, Lynn B. Martin, Sarah E. Perkins, Petr Pyšek, Kristina Schierenbeck, Carmen Schlöder, Rieks van Klinken, Kurt J. Vaughn, Wyatt Williams, Lorne M. Wolfe

995 **Greater sexual reproduction contributes to differences in demography of invasive plants and their noninvasive relatives**

Jean H. Burns, Eleanor A. Pardini, Michele R. Schutzenhofer, Y. Anny Chung, Katie J. Seidler, Tiffany M. Knight

1005 **Cytotype differences modulate eco-geographical differentiation in the widespread plant *Centaurea stoebe***

Min A. Hahn, Heinz Müller-Schärer

1015 **Does enemy loss cause release? A biogeographical comparison of parasitoid effects on an introduced insect**

Kirsten M. Prior, Jessica J. Hellmann

1025 **Genetic diversity within a dominant plant outweighs plant species diversity in structuring an arthropod community**

Kerri M. Crawford, Jennifer A. Rudgers

1036 **Gradient-based habitat affinities predict species vulnerability to drought**

Diane M. Debinski, Jennet C. Caruthers, Dianne Cook, Jason Crowley, Hadley Wickham

1046 **Ontogenetic functional diversity: Size structure of a keystone predator drives functioning of a complex ecosystem**

Volker H. W. Rudolf, Nick L. Rasmussen

1057 **Predator density and timing of arrival affect reef fish community assembly**

Adrian C. Stier, Shane W. Geange, Kate M. Hanson, Benjamin M. Bolker

- 1069 **Two's company, three's a crowd: Food and shelter limitation outweigh the benefits of group living in a shoaling fish**
John R. Ford, Stephen E. Swearer
- 1078 **Historical thermal regimes define limits to coral acclimatization**
Emily J. Howells, Ray Berkelmans, Madeleine J. H. van Oppen, Bette L. Willis, Line K. Bay
- 1089 **Additive effects of physical stress and herbivores on intertidal seaweed biodiversity**
Susan L. Williams, Matthew E. S. Bracken, Emily Jones
- 1102 **Reddened seascapes: experimentally induced shifts in 1/f spectra of spatial variability in rocky intertidal assemblages**
Laura Tamburello, Fabio Bulleri, Jacopo Bertocci, Elena Maggi, Lisandro Benedetti-Cecchi
- 1112 **Mammal predator and prey species richness are strongly linked at macroscales**
Christopher Sandom, Lars Dalby, Camilla Fløjgaard, W. Daniel Kissling, Jonathan Lenoir, Brody Sandel, Kristian Trøjelsgaard, Rasmus Ejrnæs, Jens-Christian Svenning
- 1123 **Asynchronous food-web pathways could buffer the response of Serengeti predators to El Niño Southern Oscillation**
A. R. E. Sinclair, Kristine L. Metzger, John M. Fryxell, Craig Packer, Andrea E. Byrom, Meggan E. Craft, Katie Hampson, Tiziana Lembo, Sarah M. Durant, Guy J. Forrester, John Bukombe, John Mchetto, Jan Dempewolf, Ray Hilborn, Sarah Cleaveland, Ally Nkwabi, Anna Mosser, Simon A. R. Mduma
- 1131 **Climatic variation and age-specific survival in Asian elephants from Myanmar**
Hannah S. Mumby, Alexandre Courtiol, Khyne U. Mar, Virpi Lummaa
- 1142 **Adaptive thermoregulation during summer in two populations of an arid-zone passerine**
B. Smit, C. T. Harding, P. A. R. Hockey, A. E. McKechnie
- 1155 **Influence of competition and rainfall manipulation on the growth responses of savanna trees and grasses**
Edmund C. February, Steven I. Higgins, William J. Bond, Louise Swemmer
- 1165 **Thirty-two years of change in an old-growth Ohio beech–maple forest**
James R. Runkle

1176 **A directed network analysis of heterospecific pollen transfer in a biodiverse community**

Qiang Fang, Shuang-Quan Huang

1186 **Does exogenous carbon extend the realized niche of canopy lichens? Evidence from sub-boreal forests in British Columbia**

Jocelyn Campbell, Per Bengtson, Arthur L. Fredeen, Darwyn S. Coxson, Cindy E. Prescott

1196 **A semiparametric Bayesian method for detecting Allee effects**

Masatoshi Sugeno, Stephan B. Munch

Data Papers

1205 **The thermal dependence of biological traits**

Anthony I. Dell, Samraat Pawar, Van M. Savage

Book Reviews

1206 **Book Reviews**

ESA

- **How species interact: altering the standard view on trophic ecology**
John Fryxell
- **Community ecology**
Michael Kaspari
- **You're hired! Now what? A guide for new science faculty**
Matthew E. Gifford

Books and Monographs Received

1209 **Books and Monographs Received**

ESA