

Economic Geology

BULLETIN OF
THE SOCIETY
OF ECONOMIC
GEOLOGISTS

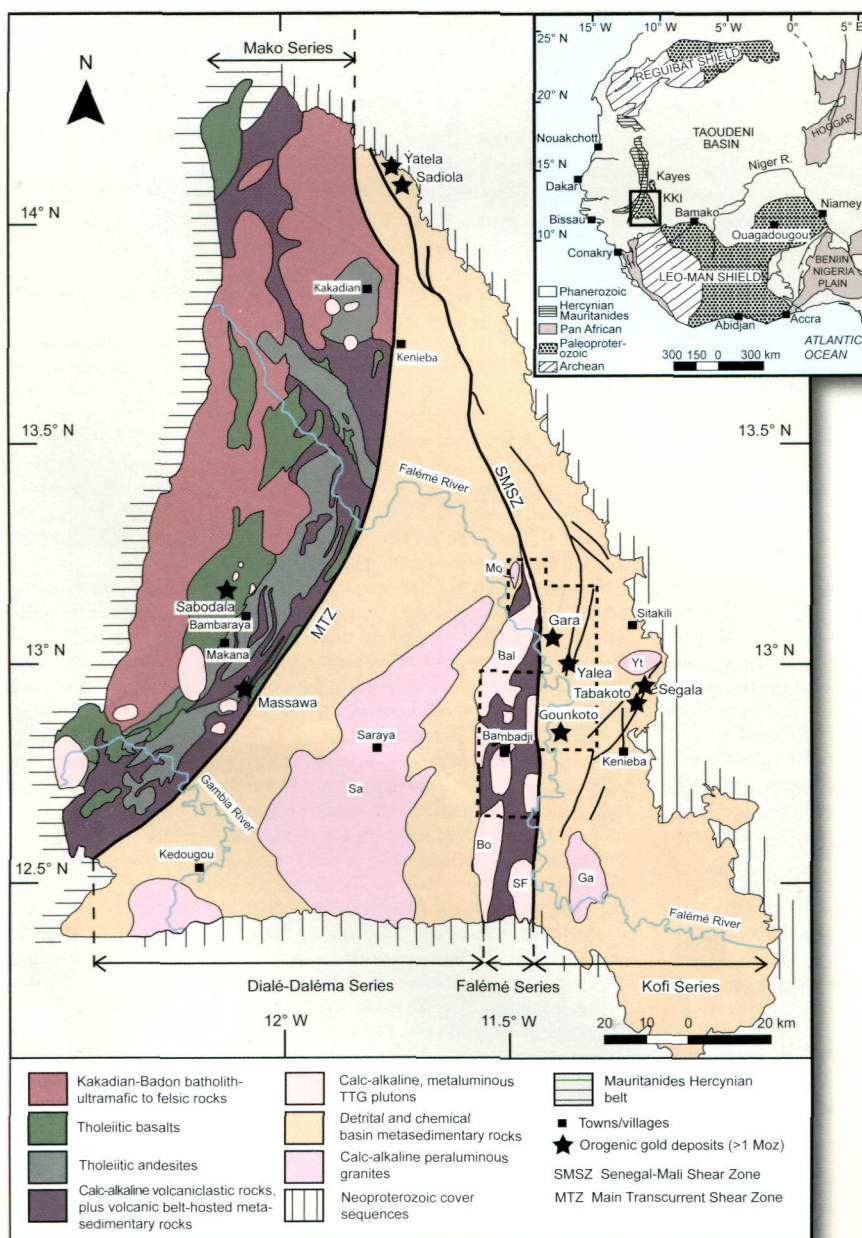
MARCH-APRIL 2013



www.segweb.org

VOLUME 108 / NUMBER 2

THE BIRIMIAN KÉDOUGOU-KÉNIÉBA INLIER, AFRICA



IN THIS ISSUE

- Biogeochemical Influence on Orogenic Gold
- Orogenic Au, Loulo, Mali, West Africa
- Geochemistry of Loulo Mining District
- Bendigo Gold Deposit, Victoria, Australia
- Structure of the Bendigo Goldfield, Australia
- Zn-Pb-Ag & Fe at Stollberg, Sweden
- Chromite, Coobina, Pilbara Craton
- Ru in Chromite, Ni Sulfide Indicator
- Ni-Cu-(PGE) in Platreef, South Africa
- U Mobilization, Questembert Granite, France

CONTENTS

Express Letter

A Biogeochemical Influence on the Secular Distribution of Orogenic Gold

Andrew G. Tomkins 193

Papers

The Geology and Mineralogy of the Loulo Mining District, Mali, West Africa: Evidence for Two Distinct Styles of Orogenic Gold Mineralization

David M. Lawrence, Peter J. Treloar, Andrew H. Rankin, Paul Harbidge, and Joel Holliday 199

A Fluid Inclusion and Stable Isotope Study at the Loulo Mining District, Mali, West Africa: Implications for Multifluid Sources in the Generation of Orogenic Gold Deposits

David M. Lawrence, Peter J. Treloar, Andrew H. Rankin, Adrian Boyce, and Paul Harbidge 229

Mineral Precipitation in the Quartz Reefs of the Bendigo Gold Deposit, Victoria, Australia

Christopher J.L. Wilson, Peter M. Schaub, and Lawrence D. Leader 259

Structural Constraints and Numerical Simulation of Strain Localization in the Bendigo Goldfield, Victoria, Australia

Lawrence D. Leader, Christopher J.L. Wilson, and Jamie A. Robinson 279

Evolution of the Paleoproterozoic Volcanic-Limestone-Hydrothermal Sediment Succession and Zn-Pb-Ag and Iron Oxide Deposits at Stollberg, Bergslagen Region, Sweden

Nils F. Jansson, Fabian Erismann, Erik Lundstam, and Rodney L. Allen 309

Deformed Chromitite Layers in the Coobina Intrusion, Pilbara Craton, Western Australia

Steve Barnes and Sarah Jones 337

Scientific Communications

Ruthenium Variation in Chromite from Komatiites and Komatiitic Basalts—A Potential Mineralogical Indicator for Nickel Sulfide Mineralization

Marek Locmelis, Marco L. Fiorentini, Stephen J. Barnes, and Norman J. Pearson 355

Primary Origin of Marginal Ni-Cu-(PGE) Mineralization in Layered Intrusions: $\Delta^{33}\text{S}$ Evidence from the Platreef, Bushveld, South Africa

E. R. Sharman, S. C. Penniston-Dorland, J. A. Kinnaird, P.A.M. Nex, M. Brown, and B. A. Wing 365

Uranium Mobilization from the Variscan Questembert Syntectonic Granite During Fluid-Rock Interaction at Depth

Romain Tartèse, Philippe Boulvais, Marc Poujol, Eric Gloaguen, and Michel Cuney 379

Reviews

Crustal Evolution and Metallogeny in India (S.C. Sarkar and A. Gupta)

Richard J. Golfarb 387

Interesting Papers in Other Journals

389

Reviewers of Manuscripts, 2012

395