

# Economic Geology

BULLETIN OF  
THE SOCIETY  
OF ECONOMIC  
GEOLOGISTS

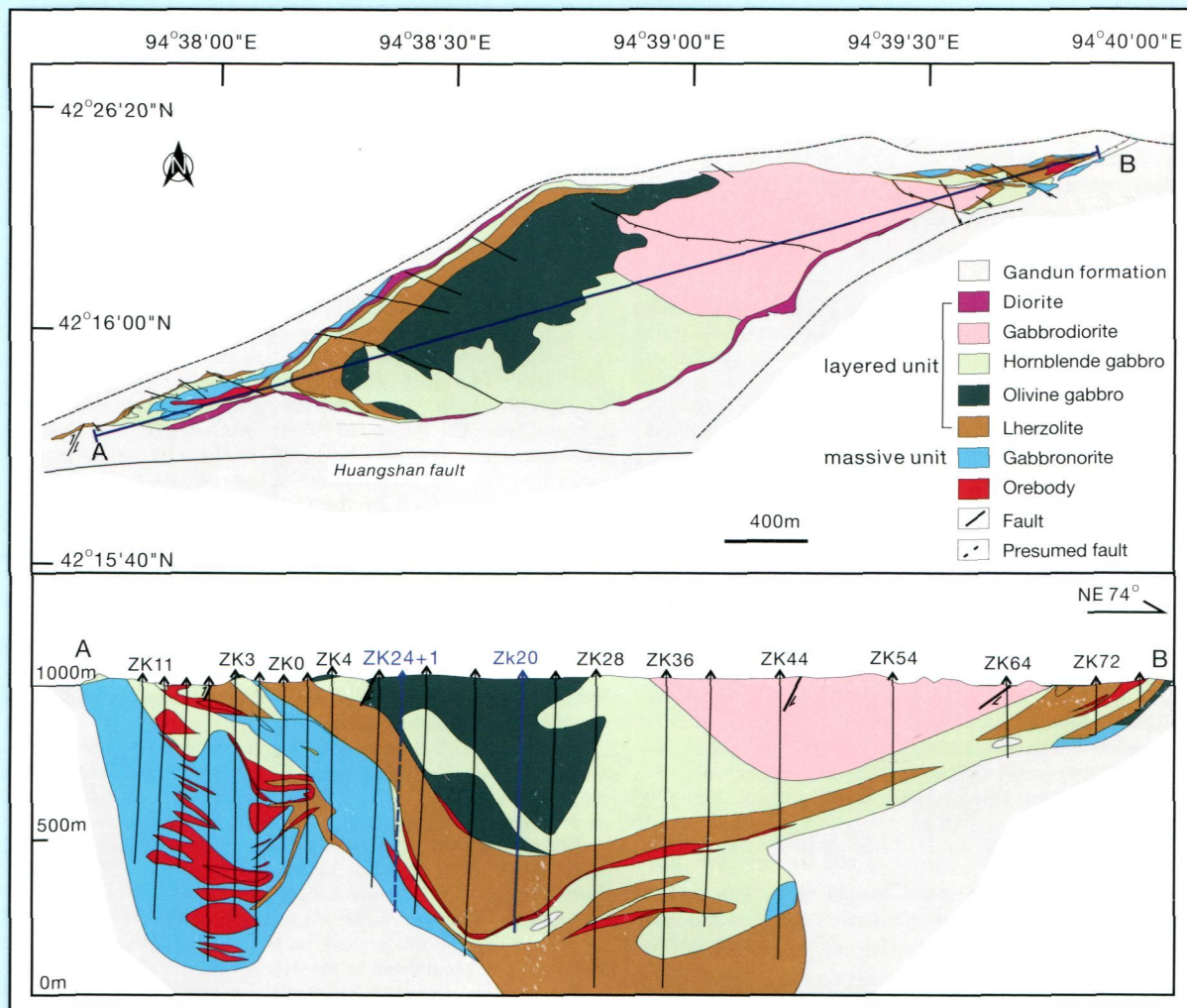


www.segweb.org

DECEMBER 2013

VOLUME 108 / NUMBER 8

## HUANGSHANDONG INTRUSION, NW CHINA



### IN THIS ISSUE

- Ni-Cu-PGE Sulfides, Jinchuan Intrusion, NW China
- Spotted Quoll Ni Deposit, Western Australia
- Hongqiling PGE-Depleted Ni-Cu Deposit, NE China
- Olivine-rich Cumulates, Platreef, Bushveld, South Africa
- Huangshandong Ni-Cu Deposit, China
- Lithospheric Mantle & Orthomagmatic Ore Deposits
- PGE in Huangshandong Ni-Cu Deposit, China
- Sulfide-Olivine Fe-Ni Exchange & Magmatic Sulfides
- Poyi Ni-Cu Sulfide Deposit, Tarim Craton, NW China
- Solubility of Fe-Ni Sulfides in Basaltic Magma
- Erbutu Ni-Cu Sulfide Deposit, Inner Mongolia
- X-ray Computed Tomography & Ni-Cu-PGE Deposits
- Ni-Cu-PGE in the Zhubu Intrusion, China

## CONTENTS

### A Special Issue Devoted to Magmatic Sulfide Mineralization and Ore Deposits with Special Emphasis on China

Guest Editors: Stephen J. Barnes, Peter C. Lightfoot, and Christina Yan Wang

#### Papers

- |   |   |             |
|---|---|-------------|
| <p><b>Preface: A Special Issue Devoted to Magmatic Sulfide Mineralization and Ore Deposits with Special Emphasis on China</b></p>   | <p><i>Stephen J. Barnes, Peter C. Lightfoot,<br/>and Christina Yan Wang</i></p>   | <p>1789</p> |
| <p><b>Segregation and Fractionation of Magmatic Ni-Cu-PGE Sulfides in the Western Jinchuan Intrusion, Northwestern China: Insights from Platinum Group Element Geochemistry</b></p>                         | <p><i>Lie-Meng Chen, Xie-Yan Song,<br/>Reid R. Keays, Yu-Long Tian,<br/>Yu-Shan Wang, Yu-Feng Deng,<br/>and Jia-Fei Xiao</i></p>                      | <p>1793</p> |
| <p><b>Origin of PGE-Depleted Ni-Cu Sulfide Mineralization in the Triassic Hongqiling No. 7 Orthopyroxenite Intrusion, Central Asian Orogenic Belt, Northeastern China</b></p>                               | <p><i>Bo Wei, Christina Yan Wang,<br/>Chusi Li, and Yali Sun</i></p>  | <p>1813</p> |
| <p><b>Sulfide Saturation and Magma Emplacement in the Formation of the Permian Huangshandong Ni-Cu Sulfide Deposit, Xinjiang, Northwestern China</b></p>  | <p><i>Jian-Feng Gao, Mei-Fu Zhou,<br/>Peter C. Lightfoot, Christina Yan Wang,<br/>Liang Qi, and Min Sun</i></p>                                       | <p>1833</p> |
| <p><b>PGE and Isotope (Hf-Sr-Nd-Pb) Constraints on the Origin of the Huangshandong Magmatic Ni-Cu Sulfide Deposit in the Central Asian Orogenic Belt, Northwestern China</b></p>                            | <p><i>Tao Sun, Zhuang-Zhi Qian,<br/>Yu-Feng Deng, Chusi Li,<br/>Xie-Yan Song, Qingyan Tang</i></p>  | <p>1849</p> |
| <p><b>Characteristics of a Newly Discovered Ni-Cu Sulfide Deposit Hosted in the Poyi Ultramafic Intrusion, Tarim Craton, Northwestern China</b></p>   | <p><i>Ming-Zhe Xia, Chang-Yi Jiang,<br/>Chusi Li, and Zhao-De Xia</i></p>   | <p>1865</p> |
| <p><b>The Erbutu Ni-Cu Deposit in the Central Asian Orogenic Belt: A Permian Magmatic Sulfide Deposit Related to Boninitic Magmatism in an Arc Setting</b></p>  | <p><i>Runmin Peng, Yuseng Zhai,<br/>Chusi Li, and Edward M. Ripley</i></p>  | <p>1879</p> |
| <p><b>The Origin of Ni-Cu-PGE Sulfide Mineralization in the Margin of the Zhubu Mafic-Ultramafic Intrusion in the Emeishan Large Igneous Province, Southwestern China</b></p>                               | <p><i>Qingyan Tang, Yansheng Ma,<br/>Mingjie Zhang, Chusi Li,<br/>Dan Zhu, and Yan Tao</i></p>  | <p>1889</p> |
| <p><b>The Distribution of PGE and the Role of Arsenic as a Collector of PGE in the Spotted Quoll Nickel Ore Deposit in the Forresteria Greenstone Belt, Western Australia</b></p>                           | <p><i>Hazel M. Prichard, Peter C. Fisher,<br/>Iain McDonald, Robert D. Knight,<br/>Adrian P. Black, David R. Sharp,<br/>and James P. Williams</i></p> | <p>1903</p> |
| <p><b>Petrogenesis of the Lower Zone Olivine-Rich Cumulates Beneath the Platreef and Their Correlation with Recognized Occurrences in the Bushveld Complex</b></p>  | <p><i>Marina A. Yudovskaya, Judith A. Kinnaird,<br/>Alexander V. Sobolev, Dmitry V. Kuzmin,<br/>Iain McDonald, and Allan H. Wilson</i></p>            | <p>1923</p> |
| <p><b>The Lithospheric Mantle Plays No Active Role in the Formation of Orthomagmatic Ore Deposits</b></p>   | <p><i>Nicholas Arndt</i></p>  | <p>1953</p> |
| <p><b>Sulfide-Olivine Fe-Ni Exchange and the Origin of Anomalously Ni Rich Magmatic Sulfides</b></p>  | <p><i>Stephen J. Barnes, B elinda Godel,<br/>Derya G urer, James M. Brennan,<br/>Jesse Robertson, and David Paterson</i></p>                          | <p>1971</p> |
| <p><b>Modeling Solubility of Fe-Ni Sulfides in Basaltic Magmas: The Effect of Nickel</b></p>  | <p><i>Alexey A. Ariskin, Leonid V. Danyushevsky,<br/>Kirill A. Bychkov, Andrew W. McNeill,<br/>Galina S. Barmina, and Georgy S. Nikolaev</i></p>      | <p>1983</p> |
| <p><b>High-Resolution X-Ray Computed Tomography and Its Application to Ore Deposits: From Data Acquisition to Quantitative Three-Dimensional Measurements with Case Studies from Ni-Cu-PGE Deposits</b></p> | <p><i>B elinda Godel</i></p>  | <p>2005</p> |

#### Book Reviews

- |   |                                |             |
|---|--------------------------------|-------------|
| <p><b>The Kalahari Manganese Field—The Adventure Continues (Brice Cairncross and Nicolas J. Beukes)</b></p> | <p><i>J. Barry Maynard</i></p> | <p>2021</p> |
|---|--------------------------------|-------------|

---

#### SOCIETY OF ECONOMIC GEOLOGISTS

---

- |   |             |
|---|-------------|
| <p><b>SEG Awards for 2012: Penrose Gold Medal, Silver Medal, Waldemar Lindgren Award, and Marsden Award</b></p> | <p>2023</p> |
|---|-------------|