

Volume 185

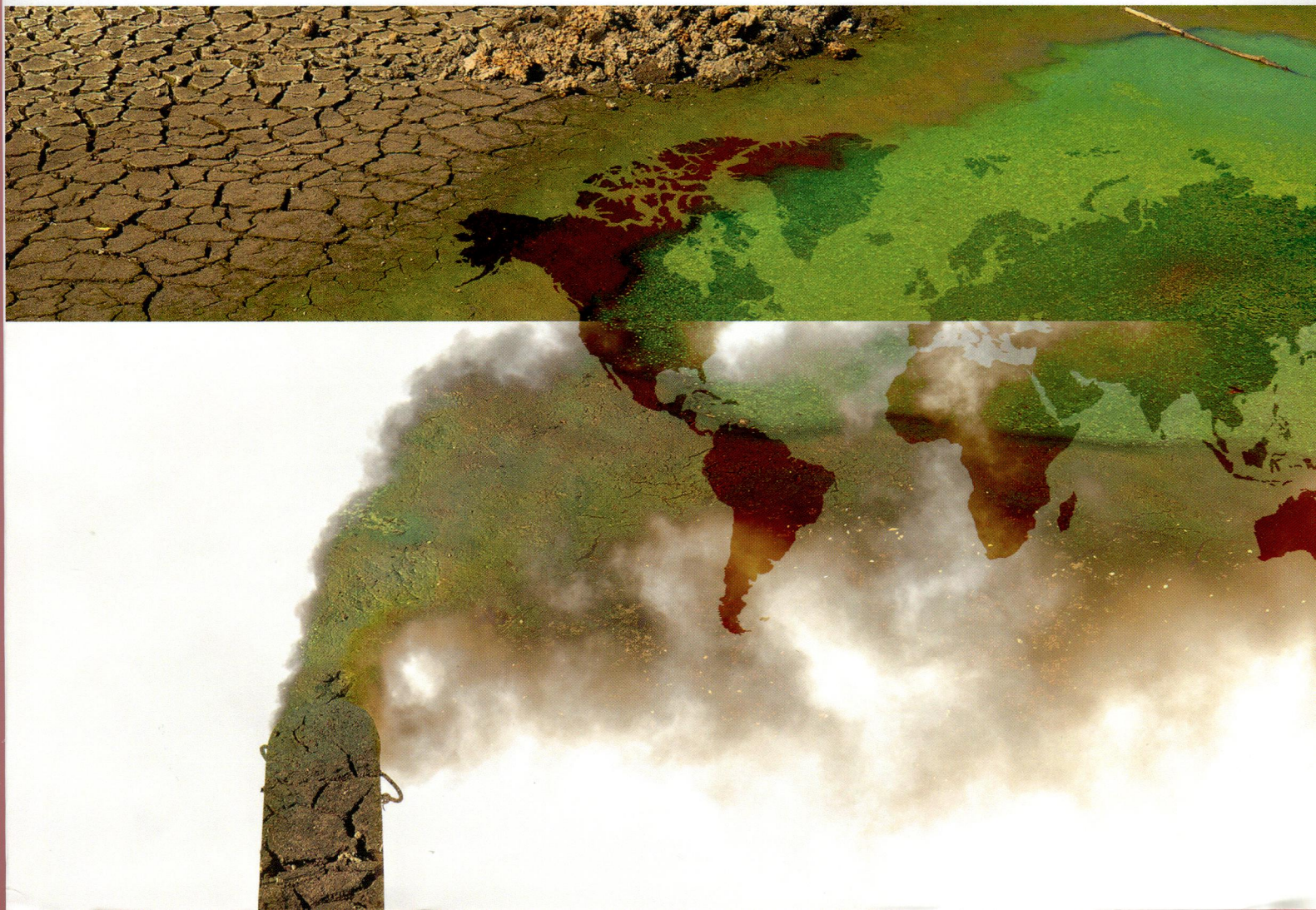
February 2014

ISSN 0269-7491

ENVIRONMENTAL POLLUTION

EDITOR-IN-CHIEF

W.J. Manning



CONTENTS

Volume 185 February 2014

- 1 Determining the bioavailability and toxicity of lead contamination to earthworms requires using a combination of physicochemical and biological methods**
W. Luo, R.A. Verweij, C.A.M. van Gestel
Combination of physicochemical and biological assays helped explaining Pb toxicity in shooting range soils from available Pb concentrations and soil characteristics.
- 10 PCBs levels and indicator congeners in children's and adolescents' hair**
B. Liang, X. Liu, J. Hou, G. Liang, W. Gong, D. Xu, L. Zhang
The PCBs levels can be predicted conveniently by the congener-specific analysis.
- 16 Enhanced desorption of persistent organic pollutants from microplastics under simulated physiological conditions**
A. Bakir, S.J. Rowland, R.C. Thompson
Desorption rates of sorbed POPs from plastics were substantially enhanced under gut conditions specific of warm blooded organisms, suggesting potential transfer following ingestion.
- 24 The contribution of a niche-based approach to ecological risk assessment: Using macroinvertebrate species under multiple stressors**
F. Colas, A. Vigneron, V. Felten, S. Devin
Niche-based approach provides early indicators of disturbance and relevant endpoints to impacts on communities and ecosystem functioning.
- 35 Comparative study of polycyclic aromatic hydrocarbons in coral tissues and the ambient sediments from Kenting National Park, Taiwan**
F.-C. Ko, C.-W. Chang, J.-O. Cheng
PAH levels in coral tissues were higher than in adjacent sediments (bioaccumulation).
- 44 Spatially-varying surface roughness and ground-level air quality in an operational dispersion model**
M.J. Barnes, T.K. Brade, A.R. MacKenzie, J.D. Whyatt, D.J. Carruthers, J. Stocker, X. Cai, C.N. Hewitt
Spatially varying roughness improves model simulations of urban air pollutant dispersion. Reducing roughness does not always decrease ground-level pollution concentrations.
- 52 Bioaccessibility of metals in alloys: Evaluation of three surrogate biofluids**
W.E. Hillwalker, K.A. Anderson
We illustrate in vitro bioaccessibility tests of alloys for health characterization purposes; bio-surrogate formulations, and residence times have a major impact on bioaccessibility.
- 59 Coal-tar-based sealcoated pavement: A major PAH source to urban stream sediments**
A.E. Witter, M.H. Nguyen, S. Baidar, P.B. Sak
Coal-tar-based sealcoated pavement is a major PAH source to urban freshwater stream sediments in south-central Pennsylvania, USA.
- 69 Comprehensive probabilistic modelling of environmental emissions of engineered nanomaterials**
T.Y. Sun, F. Gottschalk, K. Hungerbühler, B. Nowack
The mass flows of five engineered nanomaterials to technical and environmental compartments are modelled and compared to earlier estimates and to measured conventional materials.
- 77 Ingestion and transfer of microplastics in the planktonic food web**
O. Setälä, V. Fleming-Lehtinen, M. Lehtiniemi
Experiments with zooplankton and microspheres showed ingestion of spheres by zpl and the transfer of ingested microspheres to higher trophic level organisms via labelled zooplankton.

Continued on inside back cover

(Abstracted/indexed in: AGRICOLA database; Air Pollution Control Association Journal; Biological and Agricultural Index; CAB ABSTRACTS database; Elsevier BIOBASE/Current Awareness in Biological Sciences; Cambridge Scientific Abstracts; Chemical Abstracts; Current Contents/Agriculture, Biology & Environmental Sciences; Environment Abstracts; Environmental Periodicals Bibliography; Energy Information-Abstracts; EMBASE/Excerpta Medica; Geo Abstracts; GEOBASE; Index Medicus/MEDLINE/PubMed; Thomson Scientific GeoSciTech; Science Citation Index; SciSearch). Also covered in the abstract and citation database Scopus®. Full text available on ScienceDirect®.



0269-7491(201402)185;1-I



ELSEVIER

CONTENTS—Continued from outside back cover

- 84 Assessing arsenic intake from groundwater and rice by residents in Prey Veng province, Cambodia**
K. Phan, S. Phan, S. Heng, L. Huoy, K.-W. Kim
Calculation of total daily intake indicated that Prey Veng residents are at risk of As in groundwater while As in rice is an additional source for high As accumulation in human bodies.
- 90 Air pollution effects on fetal and child development: A cohort comparison in China**
D. Tang, T.Y. Li, J.C. Chow, S.U. Kulkarni, J.G. Watson, S.S.H. Ho, Z.Y. Quan, L.R. Qu, F. Perera
The associations found between PAH exposure and adverse health outcomes suggest that the removal of a coal-burning source can have rapid and direct benefits on children's health.
- 97 Past 140-year environmental record in the northern South China Sea: Evidence from coral skeletal trace metal variations**
Y. Song, K. Yu, J. Zhao, Y. Feng, Q. Shi, H. Zhang, G.A. Ayoko, R.L. Frost
140-year changes in the trace metals in corals from South China Sea were investigated. The spatiotemporal change model of the metals in seawater was reconstructed using coral record.
- 107 Impact of hydraulic and carbon loading rates of constructed wetlands on contaminants of emerging concern (CECs) removal**
F. Sharif, P. Westerhoff, P. Herckes
This article evaluates the effect of design loading rates on contaminant of emerging concern (CEC) removal in constructed wetlands.
- 116 Environmental hazards from natural hydrocarbons seepage: Integrated classification of risk from sediment chemistry, bioavailability and biomarkers responses in sentinel species**
M. Benedetti, S. Gorbi, D. Fattorini, G. D'Errico, F. Piva, D. Pacitti, F. Regoli
A multidisciplinary WOE study in a shallow coastal seepage summarized a Moderate level of risk based on integration of sediment chemistry with biological effects in caged organisms.
- 127 Occurrence of quaternary ammonium compounds (QACs) and their application as a tracer for sewage derived pollution in urban estuarine sediments**
X. Li, X. Luo, B. Mai, J. Liu, L. Chen, S. Lin
QACs were found to be present in the estuarine sediments in China for the first time and proposed as potential tracers for sewage-derived pollution in urban estuary.
- 134 Distribution of atmospheric particulate matter (PM) in rural field, rural village and urban areas of northern China**
W. Li, C. Wang, H. Wang, J. Chen, C. Yuan, T. Li, W. Wang, H. Shen, Y. Huang, R. Wang, B. Wang, Y. Zhang, H. Chen, Y. Chen, J. Tang, X. Wang, J. Liu, R.M. Coveney Jr., S. Tao
PM₁₀ concentrations in rural villages of China were comparable with those in the cities, indicating severe air pollution in the rural villages caused by coal and biofuel combustion.
- 141 Human hepatoma cells exposed to estuarine sediment contaminant extracts permitted the differentiation between cytotoxic and pro-mutagenic fractions**
M. Pinto, P.M. Costa, H. Louro, M.H. Costa, J. Lavinha, S. Caeiro, M.J. Silva
Polar/non-polar sediment fractions elicited differential cytotoxic and genotoxic effects in human HepG2 cells.
- 149 The characteristics of Beijing aerosol during two distinct episodes: Impacts of biomass burning and fireworks**
Y. Cheng, G. Engling, K.-b. He, F.-k. Duan, Z.-y. Du, Y.-l. Ma, L.-l. Liang, Z.-f. Lu, J.-m. Liu, M. Zheng, R.J. Weber
This study suggests the benefits of investigating aerosol composition separately during episode and non-episode periods, and introducing organic tracers to the speciation measurements of PM_{2.5}.
- 158 Why small and medium chemical companies continue to pose severe environmental risks in rural China**
G. He, L. Zhang, A.P.J. Mol, T. Wang, Y. Lu
The paper provides a major understanding of how and why the large number of existing chemical SMEs in rural China still form major chemical risks.
- 168 Biodegradability of pharmaceutical compounds in agricultural soils irrigated with treated wastewater**
A. Grossberger, Y. Hadar, T. Borch, B. Chefetz
Some pharmaceutical compounds are persistent in arable soils when introduced via irrigation with treated wastewater.
- 178 Setting ozone critical levels for protecting horticultural Mediterranean crops: Case study of tomato**
I. González-Fernández, E. Calvo, G. Gerosa, V. Bermejo, R. Marzuoli, V. Calatayud, R. Alonso
Critical levels for tomato yield were set at AOT40 = 8.4 ppm h and POD6 = 2.7 mmol m⁻² and confidence intervals should be used for improving O₃ risk assessment.
- 188 Tolerance of polar phytoplankton communities to metals**
P. Echeveste, A. Tovar-Sánchez, S. Agustí
Polar phytoplankton communities are tolerant to Cd and Pb, specially the Arctic ones, suggesting the acquisition of adapting mechanisms to face metals' toxicity.
- 196 Air pollution and hospital admissions for respiratory diseases in Lanzhou, China**
Y. Tao, S. Mi, S. Zhou, S. Wang, X. Xie
There were significant associations between air pollutants and respiratory diseases with lag effect, and the aged and female people are more vulnerable to air pollutants.

CONTENTS—Continued from inside back cover

- 202 Pharmaceuticals occurrence in a WWTP with significant industrial contribution and its input into the river system**
N. Collado, S. Rodriguez-Mozaz, M. Gros, A. Rubirola, D. Barceló, J. Comas, I. Rodriguez-Roda, G. Buttiglieri
PhACs integrated WWTP-river data evaluation of coupled biological process and UV tertiary treatment in a WWTP with significant industrial contribution and in the receiving river waters.
- 213 Sorption of phenanthrene and benzene on differently structural kerogen: Important role of micropore-filling**
Y. Zhang, X. Ma, Y. Ran
The sorption behaviors of benzene and phenanthrene are related to the microporosity of the differently matured kerogen, indicating the importance of pore-filling.
- 219 Different toxicity mechanisms between bare and polymer-coated copper oxide nanoparticles in *Lemna gibba***
F. Perreault, R. Popovic, D. Dewez
Polymer coating increases oxidative stress effect by core-shell CuO nanoparticles.
- 228 Temporal trend and age-dependent serum concentration of phenolic organohalogen contaminants in Japanese men during 1989–2010**
Y. Fujii, K.H. Harada, T. Hitomi, H. Kobayashi, A. Koizumi, K. Haraguchi
Pentachlorophenol and 6-hydroxy-tetrabromodiphenyl ether were predominant in serum. Age-dependent decrease of serum neutral organohalogen concentrations during the two decades.
- 234 Evaluation of effects of long term exposure on lethal toxicity with mammals**
V. Verma, Q.J. Yu, D.W. Connell
The RLE model provides a mathematical description of the change in toxicity over time for a particular chemical. This represents a major advance on the use of Haber's Rule in toxicology.
- 240 Effects of oil dispersant and oil on sorption and desorption of phenanthrene with Gulf Coast marine sediments**
Y. Gong, X. Zhao, S.E. O'Reilly, T. Qian, D. Zhao
Oil dispersant and dispersed oil in seawater increase phenanthrene sorption capacity by marine sediments and induce remarkable sorption hysteresis.
- 250 Low mercury levels in marine fish from estuarine and coastal environments in southern China**
K. Pan, H. Chan, Y.K. Tam, W.-X. Wang
Overfishing and habitat-specific geochemical properties are related to the low Hg concentrations in the wild fish.
- 258 Risk assessment of polychlorinated biphenyls and heavy metals in soils of an abandoned e-waste site in China**
Q. Zhang, J. Ye, J. Chen, H. Xu, C. Wang, M. Zhao
The pollutant level and ecological risk in an abandoned e-waste recycling area remains high and pollutants were gradually transported to its surrounding environment.
- 266 Fish biomarkers for regulatory identification of endocrine disrupting chemicals**
Z. Dang
Regulatory identification of endocrine disrupting chemicals needs both in vitro and in vivo data to show mode of action and a possible causal link to adverse effect.
- 271 Impact of elevated CO₂ concentration on dynamics of leaf photosynthesis in *Fagus sylvatica* is modulated by sky conditions**
O. Urban, K. Klem, P. Holířová, L. Šigut, M. Šprtová, P. Teslová-Navrátilová, M. Zitová, V. Špunda, M.V. Marek, J. Grace
The stimulatory effect of elevated CO₂ concentration on photosynthetic carbon assimilation can be expected to diminish as cloud cover increases.
- 281 Reduced climate sensitivity of carbon, oxygen and hydrogen stable isotope ratios in tree-ring cellulose of silver fir (*Abies alba* Mill.) influenced by background SO₂ in Franconia (Germany, Central Europe)**
T. Boettger, M. Haupt, M. Friedrich, J.S. Waterhouse
This study deals with the specific response of isotope signals in tree-rings of silver fir to climate and background air pollution in the 20th century.
- 295 Herbicide impact on non-target plant reproduction: What are the toxicological and ecological implications?**
C. Boutin, B. Strandberg, D. Carpenter, S.K. Mathiassen, P.J. Thomas
Herbicides delayed/reduced reproduction of non-target plants when sprayed at seedling and reproductive stages; flower and seed production are sensitive endpoints.
- 307 Utilizing thin-film solid-phase extraction to assess the effect of organic carbon amendments on the bioavailability of DDT and dieldrin to earthworms**
Natasha.A. Andrade, T. Centofanti, L.L. McConnell, C.J. Hapeman, A. Torrents, A. Nguyen, W.N. Beyer, R.L. Chaney, J.M. Novak, M.O. Anderson, K.B. Cantrell
A thin-film polymer sampler proved to be efficient in estimating the differences in bioavailability to earthworms in a soil treated with organic amendments.
- 314 Changes in the long-term supply of mercury species to the upper mixed waters of a recovering lake**
S.G. Todorova, C.T. Driscoll, S.W. Effler, S. O'Donnell, D.A. Matthews, D.L. Todorov, S. Gindlesperger
Internal cycling of legacy mercury deposits constitutes a substantial source of methylmercury to the epilimnion of a stratified polluted lake.

- 322 Risk assessment for cardiovascular and respiratory mortality due to air pollution and synoptic meteorology in 10 Canadian cities**
J.K. Vanos, C. Hebborn, S. Cakmak
Air pollution has a greater influence on acute human mortality than weather type, with significant differences in risk from exposure to gaseous air pollution based on cause of death.
- 333 Detection of free and covalently bound microcystins in different tissues (liver, intestines, gills, and muscles) of rainbow trout (*Oncorhynchus mykiss*) by liquid chromatography–tandem mass spectrometry: Method characterization**
S. Cadel-Six, D. Moyenga, S. Magny, S. Trotereau, M. Edery, S. Krys
We develop and characterize with the guideline NF V03 110 the protocols for the extraction and quantification of the free and total MC for different matrices.
- 340 Proinflammatory effects and oxidative stress within human bronchial epithelial cells exposed to atmospheric particulate matter (PM_{2.5} and PM_{2.5-10}) collected from Cotonou, Benin**
B.F. Cachon, S. Firmin, A. Verdin, L. Ayi-Fanou, S. Billet, F. Cazier, P.J. Martin, F. Aissi, D. Courcot, A. Sanni, P. Shirali
This study evidences the toxic potential of African fine and coarse particulate matters on respiratory epithelial cells.
- 352 The present and future of microplastic pollution in the marine environment**
J.A. Ivar do Sul, M.F. Costa
Microplastics, which are ubiquitous in marine habitats, affect all facets of the environment and continuously cause unexpected consequences for the environment and its biota.
- 365 Temporal and spatial variation in residential soil metal concentrations: Implications for exposure assessments**
C.M. Aelion, H.T. Davis, A.B. Lawson, B. Cai, S. McDermott
Small-scale spatial and large-scale temporal variation of eight metals measured in residential soils was limited, and was proportioned differently for individual metals and for covariates.
- Commentaries**
- 369 Exploitation of deep-sea resources: The urgent need to understand the role of high pressure in the toxicity of chemical pollutants to deep-sea organisms**
N.C. Mestre, R. Calado, A.M.V.M. Soares
The role of high pressure in the toxicity of chemical pollutants needs to be defined to better predict the impacts of industrial activities in deep-sea organisms.
- 372 Comments on: Identification of lead sources in residential environments: Sydney Australia. By Laidlaw, M.A.S., Zahran, S., Pingitore, N., Clague, J., Devlin, G., Taylor, M.P., 2013. Environmental Pollution 184, 238–246**
B. Gulson
This commentary addresses several issues in the paper on Sydney lead.