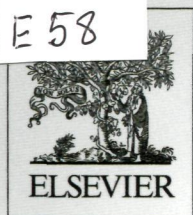


TM
E 58



Volume 186

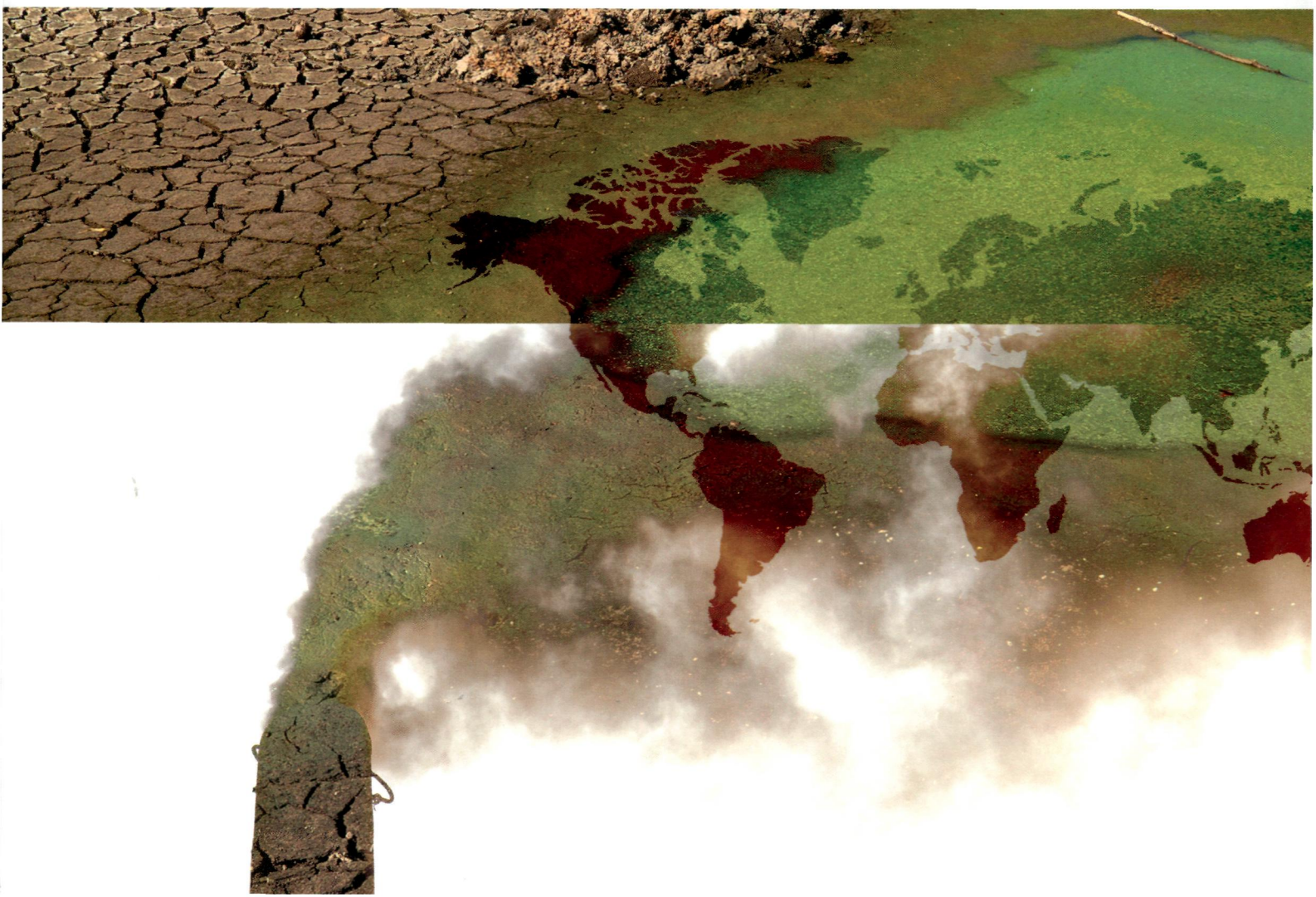
March 2014

ISSN 0269-7491

ENVIRONMENTAL POLLUTION

EDITOR-IN-CHIEF

W.J. Manning



CONTENTS

Volume 186 March 2014

- 1 Particulate air pollution and mortality in a cohort of Chinese men**
M. Zhou, Y. Liu, L. Wang, X. Kuang, X. Xu, H. Kan
PM₁₀ was associated with increased cardiorespiratory mortality in a cohort of 71,431 Chinese men.
- 7 Transport of perfluoroalkyl acids in a water-saturated sediment column investigated under near-natural conditions**
L. Vierke, A. Möller, S. Klitzke
Quantification of breakthrough of perfluoroalkyl carboxylic acids (PFCAs) and perfluoroalkyl sulfonic acids (PFSA) under conditions simulating a riverbank filtration scenario.
- 14 Occurrence and profiles of bisphenol analogues in municipal sewage sludge in China**
S. Song, M. Song, L. Zeng, T. Wang, R. Liu, T. Ruan, G. Jiang
We analyzed the profiles of bisphenol analogues in 52 sewage sludge samples with several bisphenols identified for the first time in wastewater treatment plants in China.
- 20 Contribution of nitrogen oxide and sulfur dioxide exposure from power plant emissions on respiratory symptom and disease prevalence**
E.D. Amster, M. Haim, J. Dubnov, D.M. Broday
Chronic cough, nocturnal dyspnea, chronic phlegm, and shortness of breath were significantly associated with exposure estimates of power plant-specific NO_x emissions.
- 29 Arsenic speciation and bioaccessibility in arsenic-contaminated soils: Sequential extraction and mineralogical investigation**
E.J. Kim, J.-C. Yoo, K. Baek
We investigated arsenic solid-state speciation in soils, which is crucial for risk assessment and developing suitable remediation strategies in arsenic contaminated sites.
- 36 Modification of metal bioaccumulation and toxicity in *Daphnia magna* by titanium dioxide nanoparticles**
C. Tan, W.-X. Wang
*Nano-TiO₂ accumulation in *Daphnia magna* facilitated the uptake and toxicity of metal contaminants.*
- 43 The kinetic and thermodynamic sorption and stabilization of multiwalled carbon nanotubes in natural organic matter surrogate solutions: The effect of surrogate molecular weight**
T. Li, D. Lin, L. Li, Z. Wang, F. Wu
Molecular weight of NOM influences its sorption on and stabilizing MWCNTs.
- 50 Effect of air pollutant NO₂ on *Betula pendula*, *Ostrya carpinifolia* and *Carpinus betulus* pollen fertility and human allergenicity**
L.G. Cuinica, I. Abreu, J. Esteves da Silva
When the pollen of birch trees were exposed to low levels of air pollutant NO₂, a decrease in the fertility, and an increase on the allergic reactivity, were observed.
- 56 Soil physical characteristics after EDTA washing and amendment with inorganic and organic additives**
V. Zupanc, D. Kastelec, D. Lestan, H. Grcman
The study critically examines yield, plant metal uptake and possible changes in soil physical characteristics as a consequence of soil washing procedure for metal pollution remediation.
- 63 Statistical analysis of nitrous oxide emission factors from pastoral agriculture field trials conducted in New Zealand**
F.M. Kelliher, N. Cox, T.J. van der Weerden, C.A.M. de Klein, J. Luo, K.C. Cameron, H.J. Di, D. Giltrap, G. Rys
From 185 field trials, mean nitrous oxide emission factors for pastoral soils were 0.1% for sheep dung up to 1.2% for dairy cattle urine, while that for urea fertiliser was 0.5%.

Continued on inside back cover

(Abstracted/indexed in: AGRICOLA database; Air Pollution Control Association Journal; Biological and Agricultural Index; CAB ABSTRACTS database; Elsevier BIOBASE/Current Awareness in Biological Sciences; Cambridge Scientific Abstracts; Chemical Abstracts; Current Contents/Agriculture, Biology & Environmental Sciences; Environment Abstracts; Environmental Periodicals Bibliography; Energy Information-Abstracts; EMBASE/Excerpta Medica; Geo Abstracts; GEOBASE; Index Medicus/MEDLINE/PubMed; Thomson Scientific GeoSciTech; Science Citation Index; SciSearch). Also covered in the abstract and citation database Scopus®. Full text available on ScienceDirect®.



0269-7491(201403)186;1-G



ELSEVIER

CONTENTS—Continued from outside back cover

- 67 Interactive effects of aluminium and phosphorus on microbial leaf litter processing in acidified streams: A microcosm approach**
H. Clivot, F. Charmasson, V. Felten, J.-P. Boudot, F. Guérol, M. Danger

This microcosm-based experiment showed that, in acidified streams, Al could induce a P limitation for microbial decomposers that could be alleviated only by a high P supply.
- 75 Profiling transcriptomic response of *Enchytraeus albidus* to Cu and Ni: Comparison with Cd and Zn**
S.I.L. Gomes, J.J. Scott-Fordsmand, M.J.B. Amorim

E. albidus gene mechanisms to Cu and Ni exposure: comparison to Cd and Zn.
- 83 Degradation and bound-residue formation of nonylphenol in red soil and the effects of ammonium**
J. Liu, J. Shan, B. Jiang, L. Wang, B. Yu, J. Chen, H. Guo, R. Ji

Formation of bound residues was the major mechanism in paddy red soil under oxic conditions for nonylphenol dissipation, which was significantly inhibited by amendment with ammonium.
- 90 Landscape parameters driving aquatic pesticide exposure and effects**
K. Bunzel, M. Liess, M. Kattwinkel

Our results show the interaction of different pesticide sources and landscape parameters and the resulting impairment of macroinvertebrate communities.
- 98 Passive sampling of perfluorinated chemicals in water: In-situ calibration**
S.L. Kaserzon, D.W. Hawker, K. Booij, D.S. O'Brien, K. Kennedy, E.L.M. Vermeirssen, J.F. Mueller

Passive flow monitors are useful tools for predicting flow dependent in-situ sampling rates of PFCs by modified POCIS.
- 104 Influence of plants on the distribution and composition of PBDEs in soils of an e-waste dismantling area: Evidence of the effect of the rhizosphere and selective bioaccumulation**
Y. Wang, C. Luo, J. Li, H. Yin, G. Zhang

The bioaccumulation of PBDE isomers was selective and influenced by the substituent effect, with ortho-substitution being favored over meta-substitution.
- 110 Antimony uptake, efflux and speciation in arsenic hyperaccumulator *Pteris vittata***
R. Tisarum, J.T. Lessl, X. Dong, L.M. de Oliveira, B. Rathinasabapathi, L.Q. Ma

Pteris vittata was efficient in SbIII uptake and inefficient in Sb translocation, with limited ability in Sb transformation and efflux in the roots.
- 115 Metal and proton toxicity to lake zooplankton: A chemical speciation based modelling approach**
A. Stockdale, E. Tipping, S. Lofts, J. Fott, Ø.A. Garmo, J. Hruska, B. Keller, S. Löfgren, S.C. Maberly, V. Majer, S.A. Nierzwicki-Bauer, G. Persson, A.-K. Schartau, S.J. Thackeray, A. Valois, J. Vrba, B. Walseng, N. Yan

The WHAM- F_{TOX} model has been applied to field data for pelagic lake crustacean zooplankton. The fitted results give metal toxic potencies increasing in the order $H^+ < Al < Cu < Zn < Ni$.
- 126 Homologue specific analysis of a polyether trisiloxane surfactant in German surface waters and study on its hydrolysis**
A. Michel, H.-J. Brauch, E. Worch, F.T. Lange

The first positive detect of a trisiloxane surfactant in surface waters is reported and hydrolysis of this chemical is confirmed as one possible environmental degradation process.
- 136 Combined effect of UV-irradiation and TiO_2 -nanoparticles on the predator-prey interaction of gammarids and mayfly nymphs**
G. Kalčíková, D. Englert, R.R. Rosenfeldt, F. Seitz, R. Schulz, M. Bundschuh

UV-irradiation influences nanoparticles' ecotoxicity rising concerns about adverse effects in trophic interactions and ecosystem functions.
- 141 Concentrations and trophic magnification of cyclic siloxanes in aquatic biota from the Western Basin of Lake Erie, Canada**
D.J. McGoldrick, C. Chan, K.G. Drouillard, M.J. Keir, M.G. Clark, S.M. Backus

Biomagnification estimates for siloxanes in Lake Erie are sensitive to food web structure, contaminant exposure pathways, and lipid partitioning differences between PCBs and siloxanes.
- 149 The impact of bioaugmentation on dechlorination kinetics and on microbial dechlorinating communities in subsurface clay till**
J. Bælum, C. Scheutz, J.C. Chambon, C.M. Jensen, R.P. Brochmann, P. Dennis, T. Laier, M.M. Broholm, P.L. Bjerg, P.J. Binning, C.S. Jacobsen

vcrA gene biomarker for reductive dechlorination must be supplemented by bvcA and KB-1 had a positive effect on vinyl-chloride dechlorination compared to dichloroethene dechlorination.
- 158 Synergistic sub-lethal effects of a biocide mixture on the springtail *Folsomia fimetaria***
L. Schnug, H.P. Leinaas, J. Jensen

The concepts of concentration addition and independent action failed to predict mixture toxicity due to dose-dependent synergistic effects.

- 165 **Are persistent organic pollutants and metals in eel muscle predictive for the ecological water quality?**
E. Van Ael, C. Belpaire, J. Breine, C. Geeraerts, G. Van Thuyne, I. Eulaers, R. Blust, L. Bervoets
The ecological water quality, as reflected in the biotic integrity of fish communities, is lower when concentrations of PCBs, OCPs and metals in locally sampled eels are higher.
- 172 **Comparing sediment equilibrium partitioning and passive sampling techniques to estimate benthic biota PCDD/F concentrations in Newark Bay, New Jersey (U.S.A.)**
C.L. Friedman, R. Lohmann
Using polyethylene samplers to measure porewater concentrations is a more efficient approach for estimating site-specific bioavailable organic contaminants than equilibrium partitioning.
- 180 **Long-term effects of nanoscaled titanium dioxide on the cladoceran *Daphnia magna* over six generations**
C. Jacobasch, C. Völker, S. Giebner, J. Völker, H. Alsenz, T. Potouridis, H. Heidenreich, G. Kayser, J. Oehlmann, M. Oetken
*Chronic exposure of the freshwater cladoceran *Daphnia magna* to nanoscaled titanium dioxide (AEROXIDE® TiO₂ P25) resulted in a population collapse after five generations.*
- 187 **Adsorption of sulfonamides to demineralized pine wood biochars prepared under different thermochemical conditions**
M. Xie, W. Chen, Z. Xu, S. Zheng, D. Zhu
Adsorption of sulfonamides to biochars is dominated by π - π electron-donor-acceptor (EDA) interaction with the graphitic surface.
- 195 **Assessing the influence of compost and biochar amendments on the mobility and toxicity of metals and arsenic in a naturally contaminated mine soil**
L. Beesley, O.S. Inneh, G.J. Norton, E. Moreno-Jimenez, T. Pardo, R. Clemente, J.J.C. Dawson
Individual compost and biochar amendments to a contaminated mine soil decreased metal and increased arsenic solubility, but combining amendments most effectively reduced toxicity.
- 203 **Is the phototransformation of pharmaceuticals a natural purification process that decreases ecological and human health risks?**
X.-H. Wang, A.Y.-C. Lin
Transformation byproducts associated with a pharmaceutical mixture could be more toxic, and phototransformation does not necessary mitigate the risk to humans and the ecosystem.
- 216 **Temporal and spatial variation in polychlorinated biphenyl chiral signatures of the Greenland shark (*Somniosus microcephalus*) and its arctic marine food web**
Z. Lu, A.T. Fisk, K.M. Kovacs, C. Lydersen, M.A. McKinney, G.T. Tomy, B. Rosenberg, B.C. McMeans, D.C.G. Muir, C.S. Wong
PCB chiral signatures in Greenland sharks shift over time and space, likely in parallel with dietary variation.
- 226 **Adsorption of polar, nonpolar, and substituted aromatics to colloidal graphene oxide nanoparticles**
F. Wang, J.J.-H. Haftka, T.L. Sinnige, J.L.M. Hermens, W. Chen
Colloidal graphene oxide nanoparticles exhibit strong adsorption affinities and characteristic adsorption properties for environmentally relevant aromatics and substituted aromatics.
- 234 **Herbaceous plants as filters: Immobilization of particulates along urban street corridors**
F. Weber, I. Kowarik, I. Säumel
Herbaceous urban roadside vegetation immobilizes particulate matter relevant to human health, thus supporting healthier conditions next to busy roads.
- 241 **Species-dependent effects of biochar amendment on bioaccumulation of atrazine in earthworms**
F. Wang, R. Ji, Z. Jiang, W. Chen
Amendment of contaminated soils/sediments with biochar is more effective for earthworm species with greater bioaccumulation capabilities.
- 248 **Occurrence and spatial distribution of microplastics in sediments from Norderney**
J.H. Dekiff, D. Remy, J. Klasmeier, E. Fries
On a small scale within 500 m, small microplastics are distributed rather homogeneously in sediments from the North Sea island of Norderney.
- 257 **Impacts of metal and metal oxide nanoparticles on marine organisms**
T.J. Baker, C.R. Tyler, T.S. Galloway
Exposure to metal (oxide) nanoparticles causes sub-lethal effects in marine organisms, the extent of which is related principally to the organisms' feeding regime, habitat and lifestyle.
- 272 **Environmental occurrence of arsenic in Colombia: A review**
D.L. Alonso, S. Latorre, E. Castillo, P.F.B. Brandão
This review communicates the untold story of arsenic in Colombia and draws attention to the need for more rigorous research on the metalloid. It also contributes to the information available on As in Latin America.