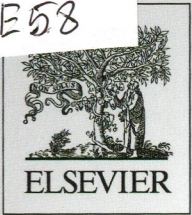


M  
E58

Volume 187

April 2014

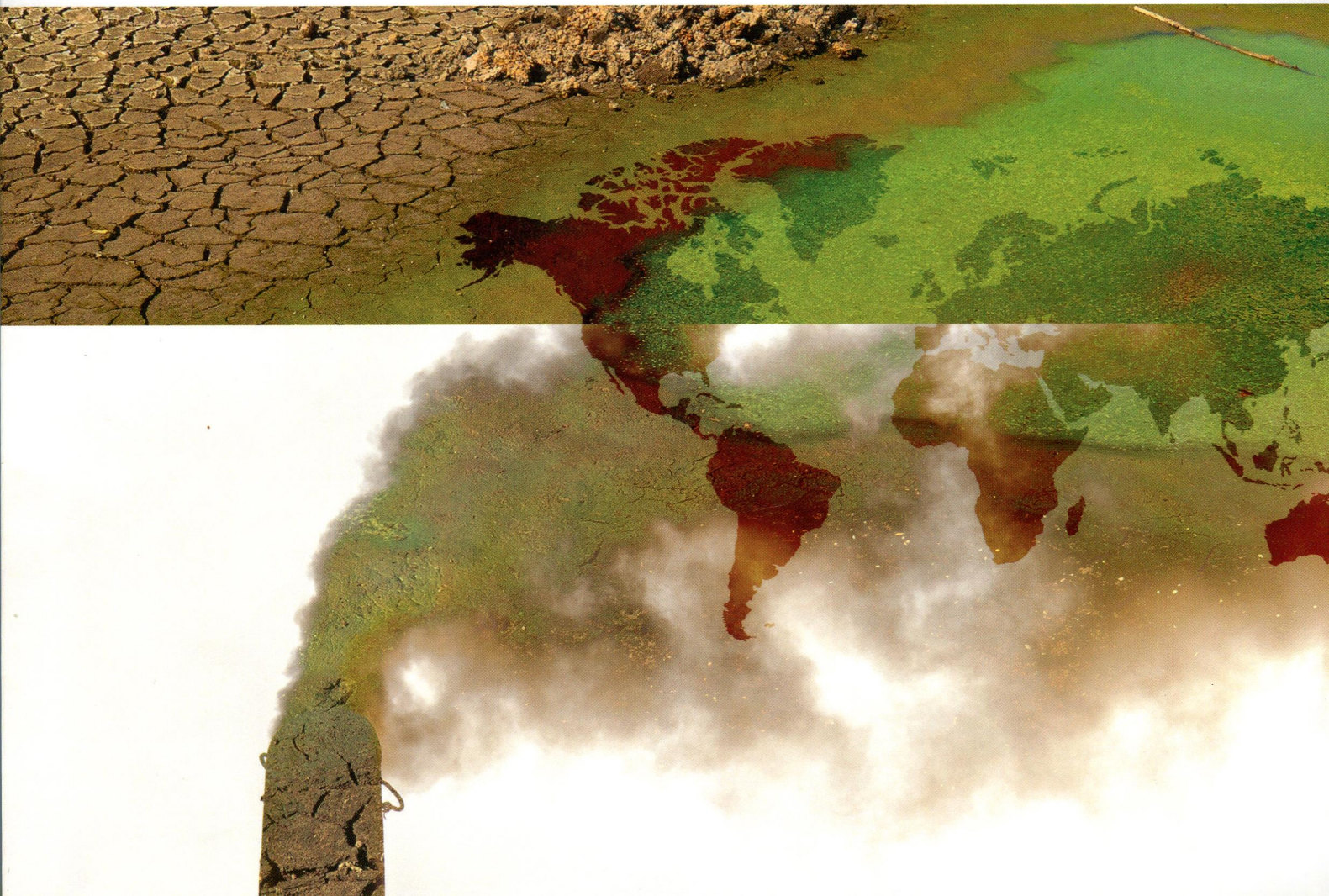
ISSN 0269-7491



# ENVIRONMENTAL POLLUTION

EDITOR-IN-CHIEF

**W.J. Manning**



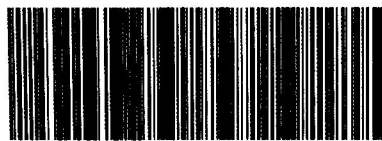
## CONTENTS

### Volume 187 April 2014

- 1 Diurnal and seasonal trends in the apparent density of ambient fine and coarse particles in Los Angeles**  
S. Hasheminassab, P. Pakbin, R.J. Delfino, J.J. Schauer, C. Sioutas  
*The apparent density of ambient particles, a direct tracer of chemical composition and morphology, shows strong seasonal and diurnal variability.*
- 10 Wet deposition of acidifying substances in different regions of China and the rest of East Asia: Modeling with updated NAQPMS**  
B.Z. Ge, Z.F. Wang, X.B. Xu, J.B. Wu, X.L. Yu, J. Li  
*The wet deposition of acidify substances and their SRRs over China have been studied using the updated NAQPMS.*
- 22 Evidence of sulfur-bound reduced copper in bamboo exposed to high silicon and copper concentrations**  
B. Collin, E. Doelsch, C. Keller, P. Cazeville, M. Tella, P. Chaurand, F. Panfill, J.-L. Hazemann, J.-D. Meunier  
*Si supplementation modifies Cu speciation in a bamboo species used in phytoremediation.*
- 31 Assessment of the caesium-137 flux adsorbed to suspended sediment in a reservoir in the contaminated Fukushima region in Japan**  
G. Mouri, V. Golosov, M. Shiiba, T. Hori  
*This study estimated the flux of caesium-137 adsorbed to suspended sediment focussing on a major reservoir in the Fukushima region of eastern Japan.*
- 42 Lead contamination and transfer in urban environmental compartments analyzed by lead levels and isotopic compositions**  
X. Hu, Y. Sun, Z. Ding, Y. Zhang, J. Wu, H. Lian, T. Wang  
*Transfer of airborne particle bound lead into street dust and surface soil in urban environmental based on lead levels and isotopic compositions.*
- 49 Leaching of plastic additives to marine organisms**  
A.A. Koelmans, E. Besseling, E.M. Foekema  
*Leaching of nonylphenol and bisphenol A from ingested microplastic may be relevant for the lugworm, but is irrelevant for fish like cod.*
- 55 Modeled subalpine plant community response to climate change and atmospheric nitrogen deposition in Rocky Mountain National Park, USA**  
T.C. McDonnell, S. Belyazid, T.J. Sullivan, H. Sverdrup, W.D. Bowman, E.M. Porter  
*Subalpine plant biodiversity in Rocky Mountain National Park has already been impacted by N deposition and climate change and is expected to experience significant future effects.*
- 65 Components from wheat roots modify the bioactivity of ZnO and CuO nanoparticles in a soil bacterium**  
N. Martineau, J.E. McLean, C.O. Dimkpa, D.W. Britt, A.J. Anderson  
*The reactivity of nanoparticles with soil bacteria may be modified by components released from plant roots.*
- 73 Spatio-temporal trends of nitrogen deposition and climate effects on Sphagnum productivity in European peatlands**  
G. Granath, J. Limpens, M. Posch, S. Muecher, W. de Vries  
*Temperate Sphagnum peatlands are vulnerable to current and future N deposition and current critical loads for peatlands are likely to hold under a future climate.*
- 81 Quantitative assessments of indoor air pollution and the risk of childhood acute leukemia in Shanghai**  
Y. Gao, Y. Zhang, M. Kamijima, K. Sakai, M. Khalequzzaman, T. Nakajima, R. Shi, X. Wang, D. Chen, X. Ji, K. Han, Y. Tian  
*Higher concentrations of indoor air pollutants were related to an elevated risk of childhood AL.*
- 90 Release of cadmium, copper and lead from urban soils of Copenhagen**  
L. Li, P.E. Holm, H. Marcussen, H.C. Bruun Hansen  
*Cadmium, Cu and Pb were studied in Copenhagen urban soils. These soils show similar initial relative release rates but higher total mobility of Cu and Pb compared to a reference soil.*

Continued on inside back cover

(Abstracted/indexed in: AGRICOLA database; Air Pollution Control Association Journal; Biological and Agricultural Index; CAB ABSTRACTS database; Elsevier BIOBASE/Current Awareness in Biological Sciences; Cambridge Scientific Abstracts; Chemical Abstracts; Current Contents/Agriculture, Biology & Environmental Sciences; Environment Abstracts; Environmental Periodicals Bibliography; Energy Information-Abstracts; EMBASE/Excerpta Medica; Geo Abstracts; GEOBASE; Index Medicus/MEDLINE/PubMed; Thomson Scientific GeoSciTech; Science Citation Index; SciSearch). Also covered in the abstract and citation database Scopus®. Full text available on ScienceDirect®.



0269-7491(201404)187;1-E



ELSEVIER

## CONTENTS—Continued from outside back cover

- 98 Interrogating trees for isotopic archives of atmospheric sulphur deposition and comparison to speleothem records**  
P.M. Wynn, N.J. Loader, I.J. Fairchild  
*Sulphur isotopes extracted from tree ring records are used to identify twentieth century pollution dynamics at the local- to regional-scale.*
- 106 Hazard and risk of herbicides for marine microalgae**  
S.B. Sjollema, G. MartínezGarcía, H.G. van der Geest, M.H.S. Kraak, P. Booij, A.D. Vethaak, W. Admiraal  
*The hazard of herbicides in the coastal waters is compound and species specific and although the general risk in the field is low, occasionally potential effect levels are reached.*
- 112 Soil removal as a decontamination practice and radiocesium accumulation in tadpoles in rice paddies at Fukushima**  
M. Sakai, T. Gomi, M. Nunokawa, T. Wakahara, Y. Onda  
*Decontamination practice reduced radiocesium concentrations in both soil and tadpoles that suggests reduction of radiocesium of soil can propagate to biota in rice paddies.*
- 116 The effects of dust-haze on mortality are modified by seasons and individual characteristics in Guangzhou, China**  
T. Liu, Y.H. Zhang, Y.J. Xu, H.L. Lin, X.J. Xu, Y. Luo, J.P. Xiao, W.L. Zeng, W.F. Zhang, C. Chu, K. Keogh, S. Rutherford, Z. Qian, Y.D. Du, M. Hu, W.J. Ma  
*This study extends our understanding of the health impact of dust-haze in southern China, and provides local evidence for health to advocate for improved air emissions control and strategies to reduce population exposure.*
- 124 Plastic ingestion by Flesh-footed Shearwaters (*Puffinus carneipes*): Implications for fledgling body condition and the accumulation of plastic-derived chemicals**  
J.L. Lavers, A.L. Bond, I. Hutton  
*Flesh-footed Shearwaters ingest large quantities of marine plastic, which is correlated with poor body condition and increased concentrations of trace metals such as chromium.*
- 130 Perinatal multiple exposure to neurotoxic (lead, methylmercury, ethylmercury, and aluminum) substances and neurodevelopment at six and 24 months of age**  
R.C. Marques, J.V.E. Bernardi, J.G. Dórea, M. de Fatima R Moreira, O. Malm  
*Distinct patterns of metal exposures showed significant differences in neurodevelopmental outcomes. Pb and EtHg showed a dominant cause of neurodevelopmental delays.*
- 136 Investigation of microbial community structure in constructed mangrove microcosms receiving wastewater-borne polycyclic aromatic hydrocarbons (PAHs) and polybrominated diphenyl ethers (PBDEs)**  
Y.-f. Wang, Y. Wu, N. Pi, N.F.-y. Tam  
*Sedimentary microbial community structure was significantly determined by tidal regime, which in turn determined retained amounts of PAHs and PBDEs in constructed mangrove microcosms.*
- 145 Air pollution and decreased semen quality: A comparative study of Chongqing urban and rural areas**  
N. Zhou, Z. Cui, S. Yang, X. Han, G. Chen, Z. Zhou, C. Zhai, M. Ma, L. Li, M. Cai, Y. Li, L. Ao, W. Shu, J. Liu, J. Cao  
*Air pollution is higher in the urban area while there is better semen quality in rural males. Polluted air may thus account for worse semen quality in urban males.*
- 153 Geochemical associations and availability of cadmium (Cd) in a paddy field system, northwestern Thailand**  
P. Kosolsaksakul, J.G. Farmer, I.W. Oliver, M.C. Graham  
*Cd was mainly associated with carbonates and clays. The strong relationship between soil and rice grain Cd was primarily due to the prevalence of easily extractable-Cd within the soil.*
- 162 Lead (Pb) and other metals in New York City community garden soils: Factors influencing contaminant distributions**  
R.G. Mitchell, H.M. Spliethoff, L.N. Ribaudo, D.M. Lopp, H.A. Shayler, L.G. Marquez-Bravo, V.T. Lambert, G.S. Ferenz, J.M. Russell-Anelli, E.B. Stone, M.B. McBride  
*Pb and Ba, which exceeded health-based guidance values in 10–14% of NYC community garden soil samples, are associated with non-raised beds, visible debris, higher pH and Zn.*
- 170 Prevalence and sunlight photolysis of controlled and chemotherapeutic drugs in aqueous environments**  
A.Y.-C. Lin, Y.-C. Lin, W.-N. Lee  
*Chemotherapeutics and controlled drugs occur at significant levels in hospital effluents and surface waters. Natural sunlight photolysis reduces their environmental occurrence.*
- 182 Mercury and methylmercury stream concentrations in a Coastal Plain watershed: A multi-scale simulation analysis**  
C.D. Knightes, H.E. Golden, C.A. Journey, G.M. Davis, P.A. Conrads, M. Marvin-DiPasquale, M.E. Brigham, P.M. Bradley  
*A grid-based watershed model coupled with biogeochemical cycling is applied at multiple scales to simulate total and methylmercury concentrations in a Coastal Plain watershed.*
- 193 Occurrence, sources, and fate of pharmaceuticals in aquatic environment and soil**  
W.C. Li  
*Concentration of pharmaceuticals in the natural environment is lower than in effluent of sewage treatment plants in which carbamazepine is found frequently in soil and water body.*

**CONTENTS**—Continued from inside back cover

- 202 Respiratory disease and particulate air pollution in Santiago Chile: Contribution of erosion particles from fine sediments**  
P.A. Garcia-Chevesich, S. Alvarado, D.G. Neary, R. Valdes, J. Valdes, J.J. Aguirre, M. Mena, R. Pizarro, P. Jofré, M. Vera, C. Olivares  
*We emphasize the urgent need to implement erosion and sediment control politics in Santiago, to decrease PM10 concentrations in the city's air, based on the US experience.*
- 206 Can ammonia tolerance amongst lichen functional groups be explained by physiological responses?**  
S. Munzi, C. Cruz, C. Branquinho, P. Pinho, I.D. Leith, L.J. Sheppard  
*Physiological response to ammonia helps to explain lichen functional groups.*
- 210 Analysis of hepatic deiodinase 2 mRNA levels in natural fish lake populations exposed to different levels of putative thyroid disrupters**  
S. Jarque, C. Bosch, M. Casado, J.O. Grimalt, D. Raldúa, B. Piña  
*Deionidase dio2 expression as a marker for exposure to putative thyroid disruptors in mountain lake trout.*