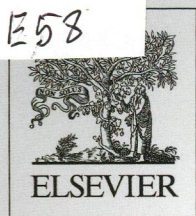


M  
E58

Volume 188

May 2014

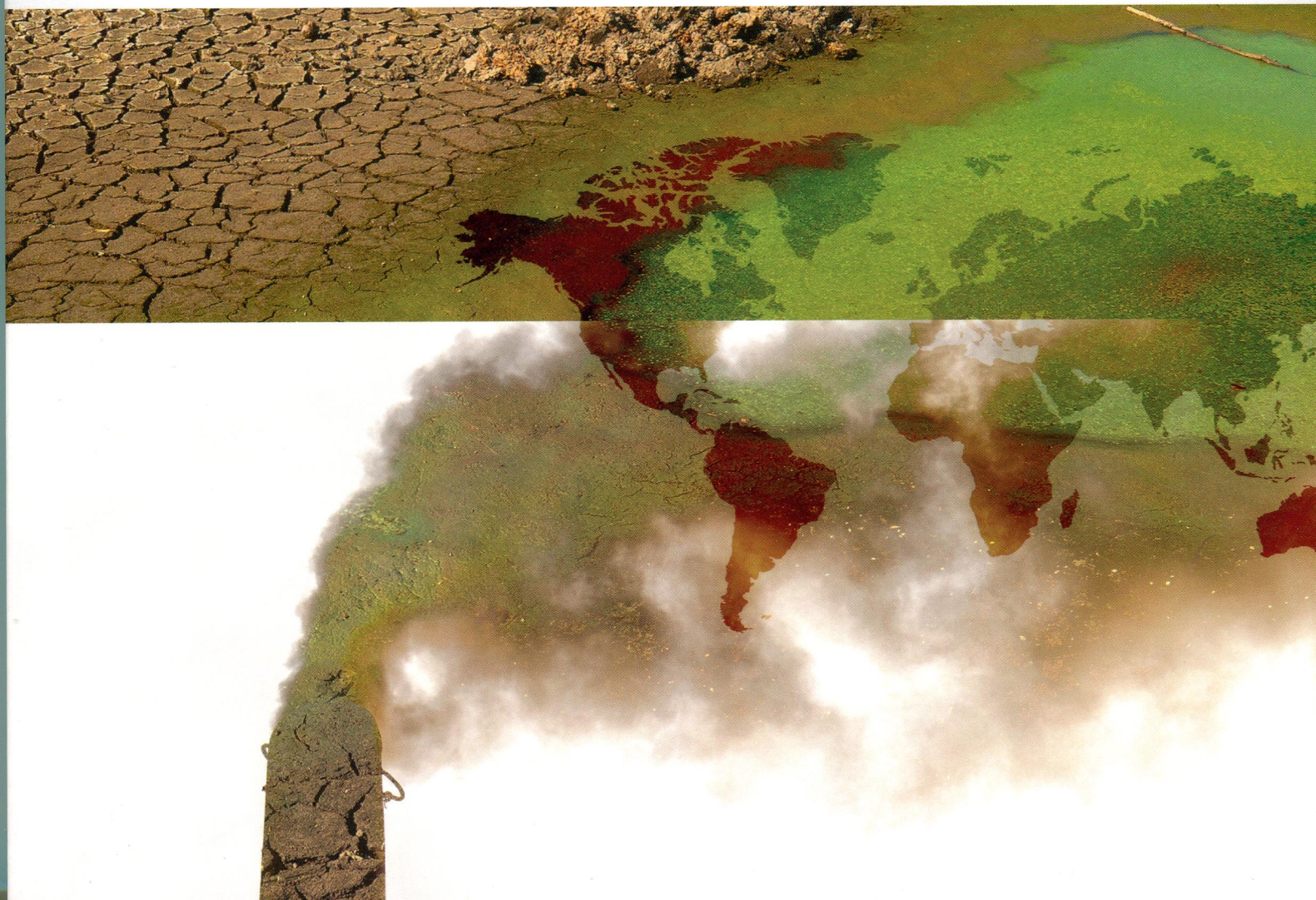
ISSN 0269-7491



# ENVIRONMENTAL POLLUTION

EDITOR-IN-CHIEF

**W.J. Manning**



## CONTENTS

Volume 188 May 2014

- 1 Long-term aging of a CeO<sub>2</sub> based nanocomposite used for wood protection**  
M. Auffan, A. Masion, J. Labille, M.-A. Diot, W. Liu, L. Olivi, O. Proux, F. Ziarelli, P. Chaurand, C. Geantet, J.-Y. Bottero, J. Rose  
*The long-term aging of a CeO<sub>2</sub> nanocomposite lead to surface chemistry and structural changes in aquatic environments.*
- 8 Effects of Siberian wildfires on the chemical composition and acidity of atmospheric aerosols of remote urban, rural and background territories**  
B.S. Smolyakov, V.I. Makarov, M.P. Shinkorenko, S.A. Popova, M.A. Bizin  
*The impact of remote fires on the aerosol characteristics depends on the type of sampling site and activity of prevalent local sources.*
- 17 Modelling uptake and toxicity of nickel in solution to *Enchytraeus crypticus* with biotic ligand model theory**  
E. He, H. Qiu, C.A.M. Van Gestel  
*Biotic Ligand Models predict Ni toxicity to *Enchytraeus crypticus* but do not take into account the different roles of Ca in affecting Ni uptake and effects.*
- 27 Understanding the paradox of selenium contamination in mercury mining areas: High soil content and low accumulation in rice**  
H. Zhang, X. Feng, C. Jiang, Q. Li, Y. Liu, C. Gu, L. Shang, P. Li, Y. Lin, T. Larssen  
*Understanding the paradox of the high content yet low bioavailability of soil selenium in a heavily Hg-contaminated area in China.*
- 37 Arsenic speciation in total contents and bioaccessible fractions in atmospheric particles related to human intakes**  
M. Huang, X. Chen, Y. Zhao, C. Yu Chan, W. Wang, X. Wang, M.H. Wong  
*Atmospheric particles are important exposure sources of inorganic As, of which the bioaccessibility is dependent on the extraction phases and models used.*
- 45 Regional distribution of styrene analogues generated from polystyrene degradation along the coastlines of the North-East Pacific Ocean and Hawaii**  
B.G. Kwon, K. Saido, K. Koizumi, H. Sato, N. Ogawa, S.-Y. Chung, T. Kusui, Y. Kodera, K. Kogure  
*This study represents a first step in establishing the relationship between plastic pollution from polystyrene in the ocean and the presence of styrene analogues as low molecules.*
- 50 Predicting criteria continuous concentrations of 34 metals or metalloids by use of quantitative ion character-activity relationships–species sensitivity distributions (QICAR–SSD) model**  
Y. Mu, F. Wu, C. Chen, Y. Liu, X. Zhao, Haiqing Liao, J.P. Giesy  
*CCCs for 34 metals/metalloids were predicted by use of QICAR–SSD model and FACR method.*
- 56 Ecotoxicity of binary mixtures of *Microcystis aeruginosa* and insecticides to *Daphnia pulex***  
J. Asselman, C.R. Janssen, G. Smaghe, K.A.C. De Schampelaere  
*Interactive effects between insecticides and cyanobacterial stressors cannot be generalized, not even for insecticides with closely related known modes of action.*
- 64 Concentrations of polybrominated diphenyl ethers (PBDEs) in central air-conditioner filter dust and relevance of non-dietary exposure in occupational indoor environments in Greece**  
A. Basis, A. Katsoyiannis, E. Botsaropoulou, C. Samara  
*PBDEs were for the first time measured in dust from central A/C filters in workplaces of Greece and their concentrations were used to estimate the non-dietary human exposure.*
- 71 An integrated evaluation of molecular marker indices and linear alkylbenzenes (LABs) to measure sewage input in a subtropical estuary (Babitonga Bay, Brazil)**  
C.C. Martins, A.C. Cabral, S.C.T. Barbosa-Cintra, A.L.L. Dauner, F.M. Souza  
*Faecal sterols index limits has been established to a subtropical environment as way to ensure reliability for a more precise assessment of sewage contamination.*

Continued on inside back cover

(Abstracted/indexed in: AGRICOLA database; Air Pollution Control Association Journal; Biological and Agricultural Index; CAB ABSTRACTS database; Elsevier BIOBASE/Current Awareness in Biological Sciences; Cambridge Scientific Abstracts; Chemical Abstracts; Current Contents/Agriculture, Biology & Environmental Sciences; Environment Abstracts; Environmental Periodicals Bibliography; Energy Information-Abstracts; EMBASE/Excerpta Medica; Geo Abstracts; GEOBASE; Index Medicus/MEDLINE/PubMed; Thomson Scientific GeoSciTech; Science Citation Index; SciSearch). Also covered in the abstract and citation database Scopus®. Full text available on ScienceDirect®.



0269-7491(201405)188;1-C



ELSEVIER

## CONTENTS—Continued from outside back cover

- 81 Concentrations of polycyclic aromatic hydrocarbons (PAHs) and azaarenes in runoff from coal-tar- and asphalt-sealcoated pavement**  
B.J. Mahler, P.C. Van Metre, W.T. Foreman  
*Concentrations of PAHs in runoff from pavement with coal-tar-based sealcoat continue to be elevated for at least 3 months following sealcoat application.*
- 88 Tools for determining critical levels of atmospheric ammonia under the influence of multiple disturbances**  
P. Pinho, E. Llop, M.C. Ribeiro, C. Cruz, A. Soares, M.J. Pereira, C. Branquinho  
*Critical levels of atmospheric ammonia have not been calculated at a regional scale. Using a new method, we revised down the current Mediterranean evergreen woodlands critical level to  $0.69 \mu\text{g m}^{-3}$ .*
- 94 Mercury distribution in the foliage and soil profiles of the Tibetan forest: Processes and implications for regional cycling**  
P. Gong, X.-p. Wang, Y.-g. Xue, B.-q. Xu, T.-d. Yao  
*The Tibetan forest can accumulate atmospheric Hg, which undergoes long-range transport, and the soil of Tibetan forest acts as the final Hg 'sink'.*
- 102 Temporal trends (1999–2010) of perfluoroalkyl acids in commonly consumed food items**  
J.H. Johansson, U. Berger, R. Vestergren, I.T. Cousins, A. Bignert, A. Glynn, P.O. Darnerud  
*Concentrations of PFOS in farmed fish and in hen's eggs decreased between 1999 and 2010. Furthermore, we observed decreasing trends of PFOA in eggs and PFHxS in fish.*
- 109 Partitioning of magnetic particles in  $\text{PM}_{10}$ ,  $\text{PM}_{2.5}$  and  $\text{PM}_1$  aerosols in the urban atmosphere of Barcelona (Spain)**  
M.A. Revuelta, G. McIntosh, J. Pey, N. Pérez, X. Querol, A. Alastuey  
*Two sources of magnetic atmospheric particles have been identified in Barcelona, a vehicular source which dominates in  $\text{PM}_{10}$  and a crustal source that dominates in  $\text{PM}_1$ .*
- 118 Organohalogen contamination in passerine birds from three metropolises in China: Geographical variation and its implication for anthropogenic effects on urban environments**  
L.-H. Yu, X.-J. Luo, H.-Y. Liu, Y.-H. Zeng, X.-B. Zheng, J.-P. Wu, Y.-J. Yu, B.-X. Mai  
*Geographical variations of OHPs contamination profiles indicate significant impact of industrialization and urbanization on Chinese urban environment.*
- 124 Impact of soil amendments and the plant rhizosphere on PAH behaviour in soil**  
G. Marchal, K.E.C. Smith, P. Mayer, L. Wollesen de Jonge, U.G. Karlson  
*Activated carbon and plant significantly reduce dissolved concentrations, chemical activities and diffusive uptake of PAHs in a contaminated soil.*
- 132 Modelling segregation effects of heterogeneous emissions on ozone levels in idealised urban street canyons: Using photochemical box models**  
J. Zhong, X.-M. Cai, W.J. Bloss  
*A grid-based urban air quality model, if adopting a grid-averaging scheme of emissions from segregated street canyons, may significantly underestimate the street-level ozone abundance.*
- 144 Soil acidification increases metal extractability and bioavailability in old orchard soils of Northeast Jiaodong Peninsula in China**  
L. Li, H. Wu, C.A.M. van Gestel, W.J.G.M. Peijnenburg, H.E. Allen  
*Long-term cultivation leads to increased acidification and metal accumulation in horticultural soils, with higher metal bioavailability to earthworms.*
- 153 Formation of environmentally persistent free radicals as the mechanism for reduced catechol degradation on hematite-silica surface under UV irradiation**  
H. Li, B. Pan, S. Liao, D. Zhang, B. Xing  
*Catechol degradation was inhibited because of the formation of environmentally persistent free radicals on hematite surface.*
- 159 Evaluation of potential effects of soil available phosphorus on soil arsenic availability and paddy rice inorganic arsenic content**  
W. Jiang, Q. Hou, Z. Yang, C. Zhong, G. Zheng, Z. Yang, J. Li  
*Under the condition of sufficient arsenic in soil, available phosphorus plays a decisive role in inorganic arsenic uptake by paddy rice.*
- 166 Effects of nitrogen additions on biomass, stoichiometry and nutrient pools of moss *Rhytidium rugosum* in a boreal forest in Northeast China**  
E. Du, X. Liu, J. Fang  
*Significant stoichiometric and biomass changes of mosses can be caused by N deposition and may lead to a substantial carbon and nutrient loss in boreal moss carpets.*
- 172 The nature and source of irregular discharges to stormwater entering Sydney estuary, Australia**  
H.J. Beck, G.F. Birch  
*Previously unreported irregular, illegal discharges of polluted stormwater released to estuaries result in acute ecological impacts and are potentially related to commercial/industrial activities.*
- 177 The Danube so colourful: A potpourri of plastic litter outnumbers fish larvae in Europe's second largest river**  
A. Lechner, H. Keckeis, F. Lumesberger-Loisl, B. Zens, R. Krusch, M. Tritthart, M. Glas, E. Schludermann  
*1) More plastic items than larval fish are drifting in the Austrian Danube. 2) The Danube is a major pathway of land-based plastics waste into the Black Sea.*