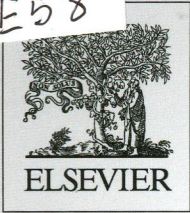


MU  
E58

Volume 190

July 2014

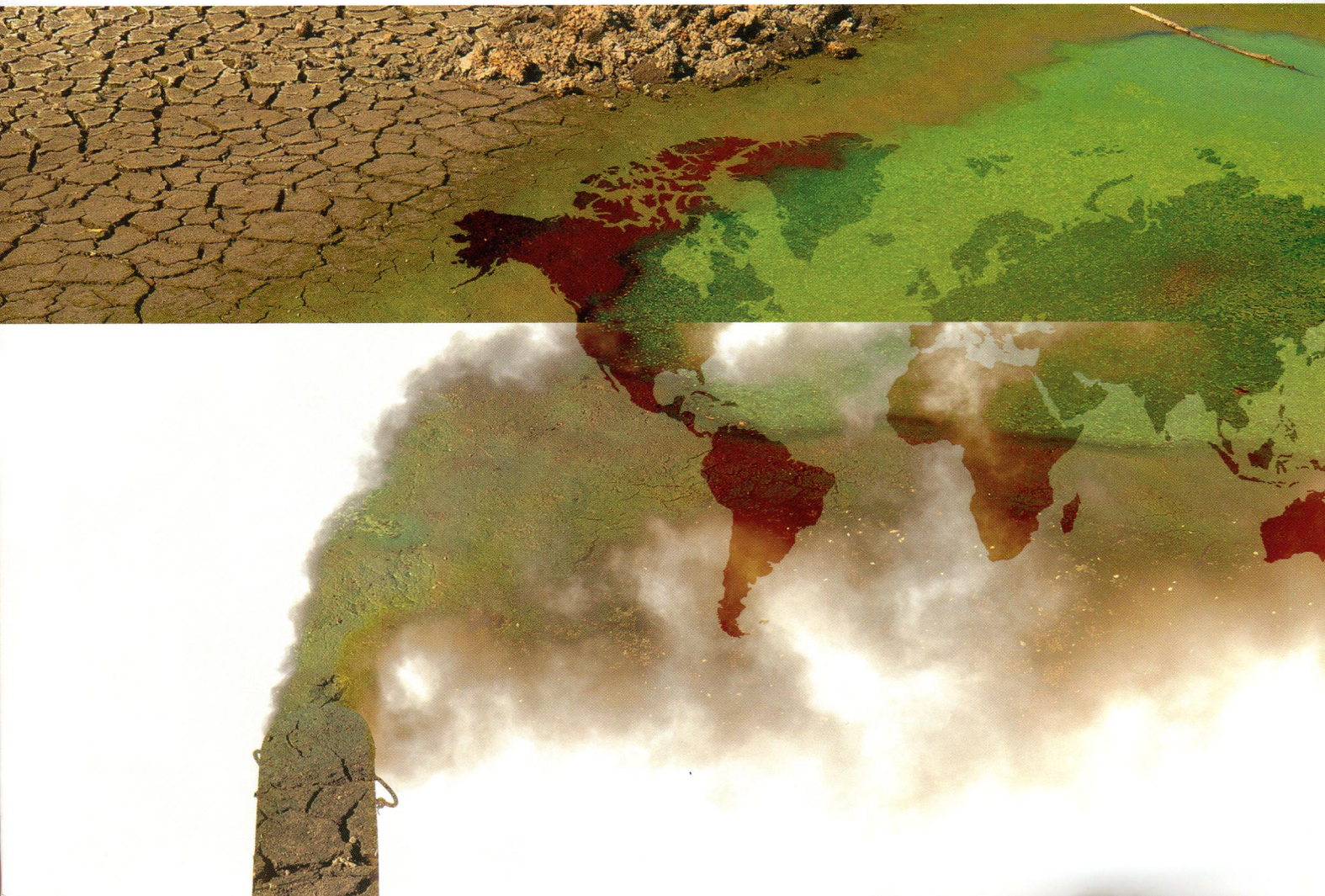
ISSN 0269-7491



# ENVIRONMENTAL POLLUTION

EDITOR-IN-CHIEF

**W.J. Manning**



## CONTENTS

Volume 190 July 2014

- 1 Mechanisms of pollution induced community tolerance in a soil microbial community exposed to Cu**  
S. Wakelin, E. Gerard, A. Black, K. Hamonts, L. Condrón, T. Yuan, J. van Nostrand, J. Zhou, M. O'Callaghan  
*Pollution induced community tolerance to Cu was linked with increased metabolic quotient but not changes in community composition or abundance of metal resistance genes in a field soil.*
- 10 Analysis of petroleum contaminated soils by spectral modeling and pure response profile recovery of *n*-hexane**  
S. Chakraborty, D.C. Weindorf, B. Li, M.N. Ali, K. Majumdar, D.P. Ray  
*Use of VisNIR DRS for rapid quantification of soil TPH and resolution of complex soil petroleum mixtures.*
- 19 Inter-compartmental transport of organophosphate and pyrethroid pesticides in South China: Implications for a regional risk assessment**  
H. Li, Y. Wei, M.J. Lydy, J. You  
*Regional risk assessment could be improved by integrating dynamic flux information derived from inter-compartmental models.*
- 27 Influence of canopy drip on the indicative N, S and  $\delta^{15}\text{N}$  content in moss *Hypnum cupressiforme***  
M. Skudnik, Z. Jeran, F. Batič, P. Simončič, S. Lojen, D. Kastelec  
*H. cupressiforme reflects the atmospheric deposition of N but not S; a distance less than 1 m between the sampling site and the nearest tree crown increases the N and S concentrations in the moss.*
- 36 Black carbon exposure more strongly associated with census tract poverty compared to household income among US black, white, and Latino working class adults in Boston, MA (2003–2010)**  
N. Krieger, P.D. Waterman, A. Gryparis, B.A. Coull  
*In a US multiethnic urban working adult population, exposure to black carbon was more strongly associated with census tract as compared to household- or individual-level socioeconomic measures.*
- 43 Paddy field – A natural sequential anaerobic–aerobic bioreactor for polychlorinated biphenyls transformation**  
C. Chen, C. Yu, C. Shen, X. Tang, Z. Qin, K. Yang, M.Z. Hashmi, R. Huang, H. Shi  
*Alternating anoxic–oxic environment led to the sequential aerobic–anaerobic transformation of PCBs in paddy field, which could act as a natural sequential anaerobic–aerobic bioreactor.*
- 51 Mercury exposure in a large subantarctic avian community**  
A. Carravieri, Y. Cherel, P. Blévin, M. Brault-Favrou, O. Chastel, P. Bustamante  
*Mercury concentrations in feathers of sympatric subantarctic birds (27 species) are driven mainly by feeding habits and exposure duration.*
- 58 Uptake, localization and clearance of quantum dots in ciliated protozoa *Tetrahymena thermophila***  
M. Mortimer, A. Kahru, V.I. Slaveykova  
*In addition to phagocytosis, quantum dots (QDs) entered protozoans by alternative pathways which did not lead to complete clearance of the QDs from the cells.*
- 65 Spatial variability of methane: Attributing atmospheric concentrations to emissions**  
I. Bamberger, J. Stieger, N. Buchmann, W. Eugster  
*Nighttime measurements close to the ground provide information about regional sources, while daytime measurements carry very local information.*
- 75 Spatial and temporal analysis of Air Pollution Index and its timescale-dependent relationship with meteorological factors in Guangzhou, China, 2001–2011**  
L. Li, J. Qian, C.-Q. Ou, Y.-X. Zhou, C. Guo, Y. Guo  
*Spatial and temporal variation of API and its timescale-dependent relationship with meteorological factors in Guangzhou were demonstrated.*

Continued on inside back cover

(Abstracted/indexed in: AGRICOLA database; Air Pollution Control Association Journal; Biological and Agricultural Index; CAB ABSTRACTS database; Elsevier BIOBASE/Current Awareness in Biological Sciences; Cambridge Scientific Abstracts; Chemical Abstracts; Current Contents/Agriculture, Biology & Environmental Sciences; Environment Abstracts; Environmental Periodicals Bibliography; Energy Information-Abstracts; EMBASE/Excerpta Medica; Geo Abstracts; GEOBASE; Index Medicus/MEDLINE/PubMed; Thomson Scientific GeoSciTech; Science Citation Index; SciSearch). Also covered in the abstract and citation database Scopus®. Full text available on ScienceDirect®.



0269-7491(201407)190;1-F



ELSEVIER

## CONTENTS—Continued from outside back cover

- 82 Assessing the relationship and influence of black carbon on distribution status of organochlorines in the coastal sediments from Pakistan**  
U. Ali, J.H. Syed, L. Junwen, L. Sánchez-García, R.N. Malik, M.J.I. Chaudhry, M. Arshad, J. Li, G. Zhang, K.C. Jones  
*Findings of the present study revealed that black carbon has a significant impact on the distribution of organochlorines in the coastal belt of Pakistan.*
- 91 Decomposing the profile of PM in two low polluted German cities – Mapping of air mass residence time, focusing on potential long range transport impacts**  
K. Dimitriou, P. Kassomenos  
*This paper implements a mixture of methods, to decompose PM sources in two low polluted German cities.*
- 101 Mechanism of and relation between the sorption and desorption of nonylphenol on black carbon-inclusive sediment**  
L. Liping, C. Guanghuan, D. Jingyou, S. Mingyang, C. Huanyu, Y. Qiang, X. Xinhua  
*NP in partition domain can desorb, but NP in adsorption domain resists desorbing, and the release risk of NP could be predicted by sorption data in BC-amended sediment.*
- 109 Allometric relationships to liver tissue concentrations of cyclic volatile methyl siloxanes in Atlantic cod**  
N.A. Warner, T.H. Nøst, H. Andrade, G. Christensen  
*Liver concentrations of cVMS congeners decreased with increasing fish length and weight in Atlantic cod collected near emission sources of cVMS.*
- 115 Occurrence and transport of 17 perfluoroalkyl acids in 12 coastal rivers in south Bohai coastal region of China with concentrated fluoropolymer facilities**  
P. Wang, Y. Lu, T. Wang, Y. Fu, Z. Zhu, S. Liu, S. Xie, Y. Xiao, J.P. Giesy  
*High level of PFOA was detected in the river water due to the fluoropolymer industries in South Bohai coastal region.*
- 123 Toxicokinetics of metals in the earthworm *Lumbricus rubellus* exposed to natural polluted soils – relevance of laboratory tests to the field situation**  
I. Giska, C.A.M. van Gestel, B. Skip, R. Laskowski  
*Toxicokinetics tests with earthworms are indicative of metal bioavailability in the field.*
- 133 Short-term exposure to dimethylformamide and the impact on digestive system disease: An outdoor study for volatile organic compound**  
C. Wang, C. Huang, Y. Wei, Q. Zhu, W. Tian, Q. Zhang  
*Outdoor contamination with dimethylformamide was associated with hospitalization for liver disease but not gastrointestinal tract disease for local residents.*
- 139 Urban ecosystem modeling and global change: Potential for rational urban management and emissions mitigation**  
S. Chen, B. Chen, B.D. Fath  
*State-of-the-art models of urban ecosystem modeling (UEM) are reviewed for rational urban management and emissions mitigation.*
- 150 Characterizing the influence of highways on springtime NO<sub>2</sub> and NH<sub>3</sub> concentrations in regional forest monitoring plots**  
S.A. Watmough, A.M. McDonough, S.M. Raney  
*“Springtime concentrations of NO<sub>2</sub> and NH<sub>3</sub> at Ontario forest monitoring plots vary greatly and can be predicted by road density surrounding the plot”.*
- 159 Lead isotopic compositions of ash sourced from Australian bushfires**  
L.J. Kristensen, M.P. Taylor, K.O. Odigie, S.A. Hibdon, A.R. Flegal  
*This study shows that industrial lead is remobilized from large old trees in ash deposits following wildfires.*
- 166 Source apportionment of atmospheric mercury pollution in China using the GEOS-Chem model**  
L. Wang, S. Wang, L. Zhang, Y. Wang, Y. Zhang, C. Nielsen, M.B. McElroy, J. Hao  
*Anthropogenic Hg emissions are updated and their impacts on atmospheric mercury concentrations and depositions are quantified for China.*
- 176 Environmental externality and inequality in China: Current Status and future choices**  
X. Zhao, S. Zhang, C. Fan  
*The seniors and children are the biggest victims of air pollution, and the transfer of industries from urban to rural areas led to occurrence of “cancer villages” in China.*