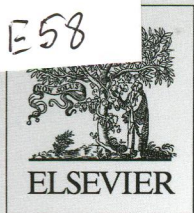


711
E58

Volume 191

August 2014

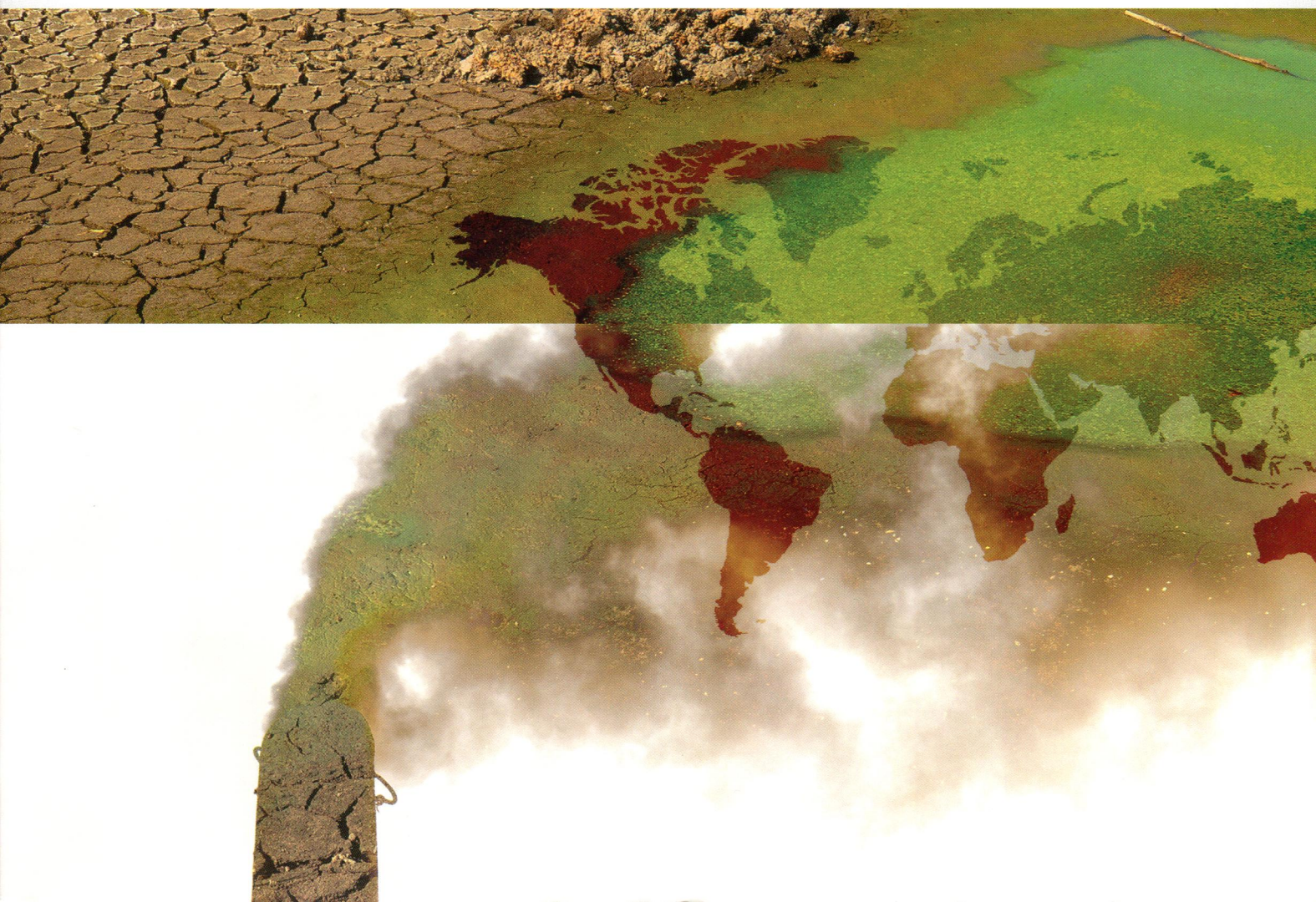
ISSN 0269-7491



ENVIRONMENTAL POLLUTION

EDITOR-IN-CHIEF

W.J. Manning



CONTENTS

Volume 191 August 2014

- 1 Association between risk of birth defects occurring level and arsenic concentrations in soils of Lvliang, Shanxi province of China**
J. Wu, C. Zhang, L. Pei, G. Chen, X. Zheng
The difference of risk levels estimate by spatial statistics to birth defect significantly associated with arsenic levels in cropland soils warrants further investigation.
- 8 Use, fate and ecological risks of antibiotics applied in tilapia cage farming in Thailand**
A. Rico, R. Oliveira, S. McDonough, A. Matser, J. Khatikarn, K. Satapornvanit, A.J.A. Nogueira, A.M.V.M. Soares, I. Domingues, P.J. Van den Brink
Antibiotics applied in tilapia cage farming in Thailand are released into surrounding aquatic ecosystems and constitute an important source of environmental pollution.
- 17 Phytoplankton community indicators of changes associated with dredging in the Tagus estuary (Portugal)**
M.T. Cabrita
Diatom:other groups ratio, benthic:pelagic diatom ratio and individual taxa were identified as efficient indicators for the assessment of water quality changes associated with dredging.
- 25 Associations of methylmercury and inorganic mercury between human cord blood and maternal blood: A meta-analysis and its application**
L. Ou, L. Chen, C. Chen, T. Yang, H. Wang, Y. Tong, D. Hu, W. Zhang, W. Long, X. Wang
The cord:maternal blood ratio distributions and the approach to estimate MeHg percentage in the blood in this paper may provide a new perspective of interpreting prenatal mercury exposure.
- 31 Formation of brominated pollutants during the pyrolysis and combustion of tetrabromobisphenol A at different temperatures**
N. Ortuño, J. Moltó, J.A. Conesa, R. Font
TBBPA mainly decomposes to give HBr and brominated hydrocarbons at high temperature, but high levels of bromophenols and polybrominated dibenzo-p-dioxins and furans are also produced.
- 38 Pathways of Pb and Mn observed in a 5-year longitudinal investigation in young children and environmental measures from an urban setting**
B. Gulson, K. Mizon, A. Taylor, M. Korsch, J.M. Davis, H. Louie, M. Wu, L. Gomez, L. Antin
This study provides useful insights about the environmental pathways leading to Pb and Mn exposure in young children.
- 50 Metal pollution in a contaminated bay: Relationship between metal geochemical fractionation in sediments and accumulation in a polychaete**
W. Fan, Z. Xu, W.-X. Wang
Prediction of metal bioaccumulation in polychaetes was significantly improved by normalizing metal concentrations to Mn content in sediment.
- 58 Evidence of altered fertility in female roach (*Rutilus rutilus*) from the River Seine (France)**
M. Gerbron, P. Geraudie, D. Fernandes, J.M. Rotchell, C. Porte, C. Minier
*This study shows evidence of reproductive alterations in female roach (*Rutilus rutilus*) from the Seine River.*
- 63 Characteristics and cellular effects of ambient particulate matter from Beijing**
Y. Lu, S. Su, W. Jin, B. Wang, N. Li, H. Shen, W. Li, Y. Huang, H. Chen, Y. Zhang, Y. Chen, N. Lin, X. Wang, S. Tao
Cellular toxicity of PM_{2.5} from Beijing depends on their properties.
- 70 Pesticide transport simulation in a tropical catchment by SWAT**
M.A. Bannwarth, W. Sangchan, C. Hugenschmidt, M. Lamers, J. Ingwersen, A.D. Ziegler, T. Streck
Pesticide load simulations of three pesticides were modeled by SWAT, providing clues on how to handle pesticides in future SWAT studies.

Continued on inside back cover

(Abstracted/indexed in: AGRICOLA database; Air Pollution Control Association Journal; Biological and Agricultural Index; CAB ABSTRACTS database; Elsevier BIOBASE/Current Awareness in Biological Sciences; Cambridge Scientific Abstracts; Chemical Abstracts; Current Contents/Agriculture, Biology & Environmental Sciences; Environment Abstracts; Environmental Periodicals Bibliography; Energy Information-Abstracts; EMBASE/Excerpta Medica; Geo Abstracts; GEOBASE; Index Medicus/MEDLINE/PubMed; Thomson Scientific GeoSciTech; Science Citation Index; SciSearch). Also covered in the abstract and citation database Scopus®. Full text available on ScienceDirect®.



0269-7491(201408)191;1-D



ELSEVIER

ENVIRONMENTAL POLLUTION

CONTENTS—Continued from outside back cover

- 80 AQUATOX coupled foodweb model for ecosystem risk assessment of Polybrominated diphenyl ethers (PBDEs) in lake ecosystems**
L. Zhang, J. Liu
Application of the AQUATOX model to assess the direct and indirect ecological risk of PBDEs.
- 93 Mercury loads into the sea associated with extreme flood**
D. Saniewska, M. Beldowska, J. Beldowski, A. Jędruch, M. Saniewski, L. Falkowska
Extreme flood (>20% of the annual river inflow) induces strong pulse of Hg (up to 75% of annual load) within less than a month, polluting water and sediment for many months.
- 101 Effects of subtle pollution at different levels of biological organisation on species-rich assemblages**
M. Rubal, P. Veiga, P.A. Reis, I. Bertocci, I. Sousa-Pinto
Assemblage structure after data transformation and abundance of canopy species were the best tools to detect effects of subtle pollution.
- 111 Relationship between trans-generational effects of tetracycline on *Daphnia magna* at the physiological and whole organism level**
H.Y. Kim, S. Yu, T.-y. Jeong, S.D. Kim
The change in internal energy balance in daphnids during multigenerational exposure to tetracycline may explain whole organism responses.
- 119 Effects of two PBDE congeners on the moulting enzymes of the freshwater amphipod *Gammarus pulex***
E. Gismondi, J.-P. Thomé
*BDE-47 and BDE-99 are accumulated in *Gammarus pulex* males and females and have impacted the moulting process, since they influenced the moulting enzymes activities.*
- 126 The influence of land use on the concentration and vertical distribution of PBDEs in soils of an e-waste recycling region of South China**
Z. Cheng, Y. Wang, S. Wang, C. Luo, J. Li, C. Chaemfa, H. Jiang, G. Zhang
Different farming activities can influence the vertical distribution of PBDEs in soil, as the leaching tendency of PBDEs was greater in moist paddy soil than in drier soils.
- 132 Dissolution of metal and metal oxide nanoparticles in aqueous media**
N. Odzak, D. Kistler, R. Behra, L. Sigg
Dissolution of several types of nanoparticles was examined in aqueous media using three complementary techniques.
- 139 Acute effects of air pollution on asthma hospitalization in Shanghai, China**
J. Cai, A. Zhao, J. Zhao, R. Chen, W. Wang, S. Ha, X. Xu, H. Kan
Ambient air pollution increases the risk of asthma hospitalization in Shanghai, China.
- 145 The impact of *in vivo* and *in vitro* exposure to base analogue 5-FU on the level of DNA damage in haemocytes of freshwater mussels *Unio pictorum* and *Unio tumidus***
Z. Gačić, S. Kolarević, K. Sunjog, M. Kračun-Kolarević, M. Paunović, J. Knežević-Vukčević, B. Vuković-Gačić
5-Fluorouracil can induce increase in DNA damage in nontarget organisms in concentrations which are close to ones measured in waste waters.
- 151 Fate and lability of silver in soils: Effect of ageing**
L. Settimo, M.J. McLaughlin, J.K. Kirby, K.A. Langdon, E. Lombi, E. Donner, K.G. Scheckel
The decrease in the lability of soluble Ag added to soils over 6 months is explained by formation of metallic Ag and associations with Fe-oxohydroxides and S groups in organic matter.
- 158 Identification of the sources of primary organic aerosols at urban schools: A molecular marker approach**
L.R. Crilley, R.M. Qadir, G.A. Ayoko, J. Schnelle-Kreis, G. Abbaszade, J. Orasche, R. Zimmermann, L. Morawska
The identification of the most important sources of primary organic aerosols at urban schools has implications for control strategies for mitigating children's exposure at schools.
- 166 Environmental fate and behavior of persistent organic pollutants in Shergyla Mountain, southeast of the Tibetan Plateau of China**
N. Zhu, K.-W. Schramm, T. Wang, B. Henkelmann, X. Zheng, J. Fu, Y. Gao, Y. Wang, G. Jiang
Different behaviors of POPs were observed on the two slopes of the Shergyla Mountain, and potential forest filter effects for some POPs were observed in the summer.
- 175 Distribution, source, fate and bioaccumulation of methyl siloxanes in marine environment**
W.-J. Hong, H. Jia, C. Liu, Z. Zhang, Y. Sun, Y.-F. Li
The concentration, source, fate and bioaccumulation of methyl siloxanes were determined in marine matrixes in Northeast China.
- 182 Is there a relationship between earthworm energy reserves and metal availability after exposure to field-contaminated soils?**
L. Beaumelle, I. Lamy, N. Cheviron, Mickaël Hedde
Earthworm energy reserves response to low doses of available metals is not generic.

CONTENTS—Continued from inside back cover

- 190 The fate of per- and polyfluoroalkyl substances within a melting snowpack of a boreal forest**
G. Codling, C. Halsall, L. Ahrens, S. Del Vento, K. Wiberg, M. Bergknut, H. Laudon, R. Ebinghaus
This study examines the fate of per- and polyfluoroalkyl substances within a melting snowpack in a remote, northern catchment.
- 199 Earthworm bioturbation influences the phytoavailability of metals released by particles in cultivated soils**
T. Leveque, Y. Capowiez, E. Schreck, T. Xiong, Y. Foucault, C. Dumat
Earthworm activities can increase metal phytoavailability and subsequent human exposure to metals in consumed vegetables.
- 207 Comparison of bioconcentration of ionic silver and silver nanoparticles in zebrafish eleutheroembryos**
A. López-Serrano, R. Muñoz-Olivas, J. Sanz-Landaluze, M. Olasagasti, S. Rainieri, C. Cámara
Different patterns on accumulation by zebrafish eleutheroembryos of ionic silver and silver nanoparticles have been observed following OECD 305 technical guidelines.
- 215 Ozone and ozone injury on plants in and around Beijing, China**
W. Wan, W.J. Manning, X. Wang, H. Zhang, X. Sun, Q. Zhang
First report of ozone incidence and ozone injury on plants in and around Beijing, China.
- 223 Temporal dynamics of pore water concentrations of Cd, Co, Cu, Ni, and Zn and their controlling factors in a contaminated floodplain soil assessed by undisturbed groundwater lysimeters**
S.M. Shaheen, J. Rinklebe, H. Rupp, R. Meissner
Flooding duration and frequency affect dynamics of metals in a floodplain soil.
- 232 Nuclear magnetic resonance spectroscopy for determining the functional content of organic aerosols: A review**
M.-C.G. Chalbot, I.G. Kavouras
This review presents the recent advances on the characterization of organic aerosol composition using nuclear magnetic resonance spectroscopy.
- 250 Freeze drying reduces the extractability of organochlorine pesticides in fish muscle tissue by microwave-assisted method**
Y. Zhang, N. Lin, S. Su, G. Shen, Y. Chen, C. Yang, W. Li, H. Shen, Y. Huang, H. Chen, X. Wang, W. Liu, S. Tao
Freeze drying significantly decreases the concentrations of OCPs extracted from fish muscle samples by microwave-assisted method.
- 253 An urgent need for an EPA standard for disposal of coal ash**
A.D. Lemly
Wildlife poisoning from coal combustion waste shows how regulatory policy is influenced by politics and industry rather than prudent decisions based on credible scientific investigation.

Letters to the Editor

- 256 Comments on “Modeled PM_{2.5} removal by trees in ten U.S. cities and associated health effects” by Nowak et al. (2013)**
T.H. Whitlow, D.A. Pataki, M. Alberti, S. Pincetl, H. Setala, M. Cadenasso, A. Felson, K. McComas
- 257 Author’s response to letter by Whitlow et al.**
D.J. Nowak, S. Hirabayashi, A. Bodine, R. Hoehn
- 258 Response to authors’ reply regarding “Modeled PM_{2.5} removal by trees in ten U.S. cities and associated health effects” by Nowak et al. (2013)**
T.H. Whitlow, D.A. Pataki, M. Alberti, S. Pincetl, H. Setala, M. Cadenasso, A. Felson, K. McComas
- 260 Article title misstates the role of pavement sealers**
K. O’Reilly
Data does not support the claim that pavement sealers are a source of PAHs in urban sediments.
- 262 Reply to letter on “Coal-tar-based sealcoated pavement: A major PAH source to urban stream sediments”**
A.E. Witter, P.B. Sak
- 264 Response to authors’ reply on “Coal-tar-based sealcoated pavement: A major PAH source to urban stream sediments”**
K. O’Reilly
- 266 Response to O’Reilly’s second letter to the editor on “Coal-tar-based sealcoated pavement: A major PAH source to urban stream sediments”**
A.E. Witter, P.B. Sak
- 268 Letter to the Editor on “Article title misstates the role of pavement sealers”**
J.L. Crane