

ΠΠ
E58

Volume 194

November 2014

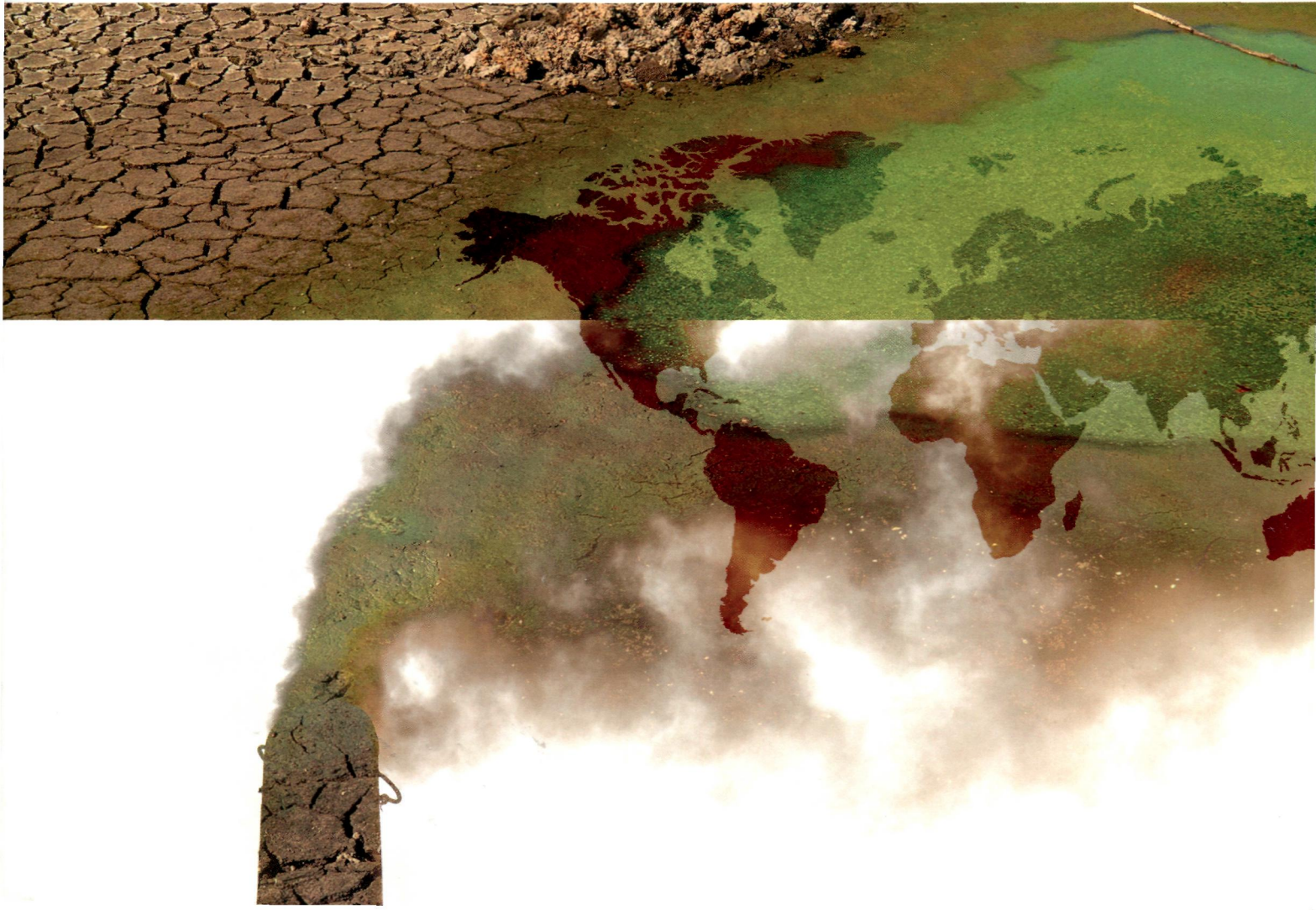
ISSN 0269-7491



ENVIRONMENTAL POLLUTION

EDITOR-IN-CHIEF

W.J. Manning



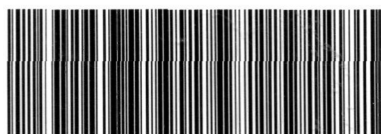
CONTENTS

Volume 194 November 2014

- 1 Changes in atmospheric nitrate deposition in Germany – An isotopic perspective**
F. Beyn, V. Matthias, K. Dähnke
Higher $\delta^{15}\text{N}$ values in atmospheric nitrate deposition than in the 1980s indicate a change in isotopic ranges of NO_x sources in Germany.
- 11 Climatic factors influence leaf structure and thereby affect the ozone sensitivity of *Ipomoea nil* ‘Scarlet O’Hara’**
B.B. Moura, E.S. Alves
The tropical climate throughout the year influences the leaf development and consequently, the plant sensitivity to O_3 toxic effects.
- 17 Using risk-ranking of metals to identify which poses the greatest threat to freshwater organisms in the UK**
R.L. Donnachie, A.C. Johnson, C. Moeckel, M.G. Pereira, J.P. Sumpter
From 12 metals, copper has been ranked of the greatest concern to UK freshwater organisms, based on the difference between the median effect concentration and median river water concentration.
- 24 Prevalence, antibiotic resistance patterns and molecular characterization of *Escherichia coli* from Austrian sandpits**
A. Badura, J. Luxner, G. Feierl, F.F. Reinthaler, G. Zarfel, H. Galler, G. Pregartner, R. Riedl, A.J. Grisold
*The results suggest *E. coli* with antibiotic resistance mechanisms and various virulence traits occur commonly in sandpits and therefore represent a health risk.*
- 31 Effect of model dissolved organic matter coating on sorption of phenanthrene by TiO_2 nanoparticles**
X. Wang, E. Ma, X. Shen, X. Guo, M. Zhang, H. Zhang, Y. Liu, F. Cai, S. Tao, B. Xing
DOM coating greatly influences sorption of phenanthrene to both bulk and nano TiO_2 particles.
- 38 Maternal transfer and embryonic assimilation of trace elements in freshwater turtles after remediation of a coal fly-ash spill**
J.U. Van Dyke, D.A. Steen, B.P. Jackson, W.A. Hopkins
Maternal transfer of fly-ash derived trace elements differs between two turtle species, and embryonic turtles only partially assimilate all of the trace elements present in eggs.
- 50 Relationship between site-specific nitrogen concentrations in mosses and measured wet bulk atmospheric nitrogen deposition across Europe**
H. Harmens, E. Schnyder, L. Thöni, D.M. Cooper, G. Mills, S. Leblond, K. Mohr, J. Poikolainen, J. Santamaria, M. Skudnik, H.G. Zechmeister, A.-J. Lindroos, A. Hanus-Ilmar
Nitrogen concentration in mosses shows saturation occurring at a measured wet bulk nitrogen deposition of ca. $20 \text{ kg N ha}^{-1} \text{ yr}^{-1}$.
- 60 Occurrence and fate of perfluoroalkyl substances in marine sediments from the Chinese Bohai Sea, Yellow Sea, and East China Sea**
Y. Gao, J. Fu, L. Zeng, A. Li, H. Li, N. Zhu, R. Liu, A. Liu, Y. Wang, G. Jiang
PFASs concentrations in the sediments from the China seas were moderate and the most important factor influencing the spatial distributions was pH.
- 69 Decreased rates of terpene emissions in *Ornithopus compressus* L. and *Trifolium striatum* L. by ozone exposure and nitrogen fertilization**
J. Llusia, V. Bermejo-Bermejo, H. Calvete-Sogo, J. Peñuelas
 O_3 exposure significantly decreased the rate of total terpene emission (42% across species and treatments). Terpene emission rates did not respond to the increased levels of O_3 when N soil availability rose.
- 78 Evaluation of the leucine incorporation technique for detection of pollution-induced community tolerance to copper in a long-term agricultural field trial with urban waste fertilizers**
J.D.S. Lekfeldt, J. Magid, P.E. Holm, O. Nybroe, K.K. Brandt
Detection of pollution-induced community tolerance for field identification of toxicants affecting soil bacterial communities requires stricter PICT detection criteria than previously assumed.

Continued on inside back cover

(Abstracted/indexed in: AGRICOLA database; Air Pollution Control Association Journal; Biological and Agricultural Index; CAB ABSTRACTS database; Elsevier BIOBASE/Current Awareness in Biological Sciences; Cambridge Scientific Abstracts; Chemical Abstracts; Current Contents/Agriculture, Biology & Environmental Sciences; Environment Abstracts; Environmental Periodicals Bibliography; Energy Information-Abstracts; EMBASE/Excerpta Medica; Geo Abstracts; GEOBASE; Index Medicus/MEDLINE/PubMed; Thomson Scientific GeoSciTech; Science Citation Index; SciSearch). Also covered in the abstract and citation database Scopus®. Full text available on ScienceDirect®.



0269-7491(201411)194;1-E



ELSEVIER

ENVIRONMENTAL POLLUTION

CONTENTS—Continued from outside back cover

- 86 Warfarin, a potential pollutant in aquatic environment acting through Pxr signaling pathway and γ -glutamyl carboxylation of vitamin K-dependent proteins**
I. Fernández, A. Santos, M.L. Cancela, V. Laizé, P.J. Gavaia
Warfarin exposure affects zebrafish larval development by impairing γ -carboxylation and/or pregnane X receptor signaling.
- 96 Assessing the relationship among urban trees, nitrogen dioxide, and respiratory health**
M. Rao, L.A. George, T.N. Rosenstiel, V. Shandas, A. Dinno
A land use regression model based on in-situ urban measurements of NO_2 shows an association of trees with reduced NO_2 sufficient to provide discernible respiratory health benefits.
- 105 Arsenic enhanced plant growth and altered rhizosphere characteristics of hyperaccumulator *Pteris vittata***
J.Y. Xu, H.B. Li, S. Liang, J. Luo, L.Q. Ma
*Arsenic enhanced the growth of *Pteris vittata*, which enhanced As reduction in the rhizosphere.*
- 112 Particle pollution in Rio de Janeiro, Brazil: Increase and decrease of pro-inflammatory cytokines IL-6 and IL-8 in human lung cells**
R.I. Rodríguez-Cotto, M.G. Ortiz-Martínez, E. Rivera-Ramírez, V.L. Mateus, B.S. Amaral, B.D. Jiménez-Vélez, A. Gioda
 PM_{10} increased and $\text{PM}_{2.5}$ decreased IL-6 and IL-8 while metals were not associated with cytokine decrease but with cytotoxicity.
- 121 Can green roof act as a sink for contaminants? A methodological study to evaluate runoff quality from green roofs**
K. Vijayaraghavan, U.M. Joshi
This study investigated the potential of green roofs to act as sink for pollutants.
- 130 The uptake of ZnO and CuO nanoparticles in the water-flea *Daphnia magna* under acute exposure scenarios**
N. Adam, F. Leroux, D. Knapen, S. Bals, R. Blust
*The combined dissolution and uptake results indicate that the acute toxicity of ZnO and CuO nanoparticles to *Daphnia magna* is caused by metal ions dissolved from the particles.*
- 138 Fate of copper complexes in hydrothermally altered deep-sea sediments from the Central Indian Ocean Basin**
P. Chakraborty, S.G. Sander, S. Jayachandran, B.N. Nath, G. Nagaraju, K. Chennuri, K. Vudamala, N. Lathika, M.B.L. Mascarenhas-Pereira
Hydrothermally influenced deep-sea sediments from Central Indian Ocean Basin may significantly contribute to the global Cu flux during deep-sea mining.
- 145 Residential exposure to volatile organic compounds and lung function: Results from a population-based cross-sectional survey**
S. Cakmak, R.E. Dales, L. Liu, L.M. Kauri, C.L. Lemieux, C. Hebborn, J. Zhu
Several VOCs were associated with changes in respiratory physiology. Recognizing differences between males and females, as well as by age, our study provides novel information.
- 152 Occurrence and removal of drugs of abuse in Wastewater Treatment Plants of Valencia (Spain)**
M.J. Andrés-Costa, N. Rubio-López, M. Morales Suárez-Varela, Y. Pico
This work describes spatial and temporal trends of illicit drugs in wastewater of Valencia as well as the environmental risk derived.
- 163 Impact of urbanization level on urban air quality: A case of fine particles ($\text{PM}_{2.5}$) in Chinese cities**
L. Han, W. Zhou, W. Li, L. Li
For the first time, we examined the impact of urban $\text{PM}_{2.5}$ on surrounding area; and found that urbanization affected urban $\text{PM}_{2.5}$ concentrations.
- 171 Future impacts of nitrogen deposition and climate change scenarios on forest crown defoliation**
A. De Marco, C. Proietti, I. Cionni, R. Fischer, A. Screpanti, M. Vitale
Nitrogen deposition and climate change as relevant drivers of crown defoliation.
- 181 Urinary excretion of arsenic following rice consumption**
A.A. Meharg, P.N. Williams, C.M. Deacon, G.J. Norton, M. Hossain, D. Louhing, E. Marwa, Y. Lawgalwi, M. Taggart, C. Cascio, P. Haris
24 h urine samples, or measurements of volume and arsenic content of each daily urine pass, are more effective at monitoring arsenic in urine than first pass/spot check urine sampling.
- 188 Chemical and biological characterization of air particulate matter 2.5, collected from five cities in China**
P.Y. Leung, H.T. Wan, M.B. Billah, J.J. Cao, K.F. Ho, C.K.C. Wong
Present study illustrated the severity of air pollution in BJ and XA, with emphasis on the risk of cancer in the local residence.
- 196 Calibration and field application of passive sampling for episodic exposure to polar organic pesticides in streams**
D. Fernández, E.L.M. Vermeirssen, N. Bandow, K. Muñoz, R.B. Schäfer
Episodic exposure to 19 pesticides was determined in vineyard streams using passive sampling in concert with a calibration experiment and a novel algorithm to derive sampling rates.
- 203 Sorption affinities of sulfamethoxazole and carbamazepine to two sorbents under co-sorption systems**
C. Wang, H. Li, S. Liao, D. Zhang, M. Wu, B. Pan, B. Xing
The release ratio of the adsorbed pollutants provides useful information for understanding pollutant sorption strength and associated risks.

CONTENTS—Continued from inside back cover

- 210 Persistent organic pollutants in mountain air of the southeastern Tibetan Plateau: Seasonal variations and implications for regional cycling**
J. Ren, X. Wang, Y. Xue, P. Gong, D.R. Joswiak, B. Xu, T. Yao
Monsoon-driven transport of selected POPs to the Tibetan Plateau is confirmed and the Tibetan forest acts as a barrier for obstructing these pollutants.
- 217 Impact of agronomic practices on arsenic accumulation and speciation in rice grain**
R. Ma, J. Shen, J. Wu, Z. Tang, Q. Shen, F.-J. Zhao
Field experiments over four crop seasons identified significant effects of water management and straw incorporation on arsenic accumulation and speciation in rice grain.
- 224 Occurrences and fate of DDT principal isomers/metabolites, DDA, and o,p'-DDD enantiomers in fish, sediment and water at a DDT-impacted superfund site**
A.W. Garrison, M. Cyterski, K.D. Roberts, D. Burdette, J. Williamson, J.K. Avants
This article presents 24 years of monitoring data for DDT and its isomers and metabolites that show successful remediation of an aquatic ecosystem severely contaminated by waste from a DDT plant.
- 235 Modeling of stomatal conductance to estimate stomatal ozone uptake by *Fagus crenata*, *Quercus serrata*, *Quercus mongolica* var. *crispula* and *Betula platyphylla***
Y. Kinose, F. Azuchi, Y. Uehara, T. Kanomata, A. Kobayashi, M. Yamaguchi, T. Izuta
The acute effects of O₃ on g_s should be incorporated into the stomatal conductance models to estimate stomatal O₃ uptake.
- 246 'Rare biosphere' bacteria as key phenanthrene degraders in coastal seawaters**
C. Sauret, T. Séverin, G. Vétion, C. Guigue, M. Goutx, M. Pujo-Pay, P. Conan, S.K. Fagervold, J.-F. Ghiglione
Role of the rare biosphere as a 'seed bank' to support the environment to withstand pollution events. Identification of keystone PAH-degraders and PAH-tolerant bacteria.
- 254 Concentrations of lead, cadmium and barium in urban garden-grown vegetables: The impact of soil variables**
M.B. McBride, H.A. Shayler, H.M. Spliethoff, R.G. Mitchell, L.G. Marquez-Bravo, G.S. Ferenz, J.M. Russell-Anelli, L. Casey, S. Bachman
Metal concentrations in garden vegetables are impacted by soil particle contamination and soil characteristics that influence phytoavailability.
- 262 Effects of elevated temperature on the toxicity of copper and oxytetracycline in the marine model, *Euplotes crassus*: A climate change perspective**
A. Gomiero, A. Viarengo
Variations in temperature-related toxicity of Cu and the antibiotic oxytetracycline were assessed via a variety of tests. The selected toxicants presented opposite behaviours.
- 272 Methylated and unsubstituted polycyclic aromatic hydrocarbons in street dust from Vietnam and India: Occurrence, distribution and *in vitro* toxicity evaluation**
L.H. Tuyen, N.M. Tue, S. Takahashi, G. Suzuki, P.H. Viet, A. Subramanian, K.A. Bulbule, P. Parthasarathy, A. Ramanathan, S. Tanabe
Methyl benz[a]anthracene, benzo[b]- and benzo[k]fluoranthene were major contributors to AhR-mediated activities in street dust from Vietnam and India.
- 281 Occurrence, fate and effects of Di (2-ethylhexyl) phthalate in wastewater treatment plants: A review**
M. Zolfaghari, P. Drogui, B. Seyhi, S.K. Brar, G. Buelna, R. Dubé
The fate and behavior of DEHP in wastewater treatment processes are discussed. The quantitative and qualitative comparison of wastewater treatment processes for DEHP removal is presented.