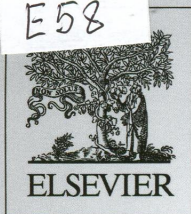


FM
E58



Volume 195

December 2014

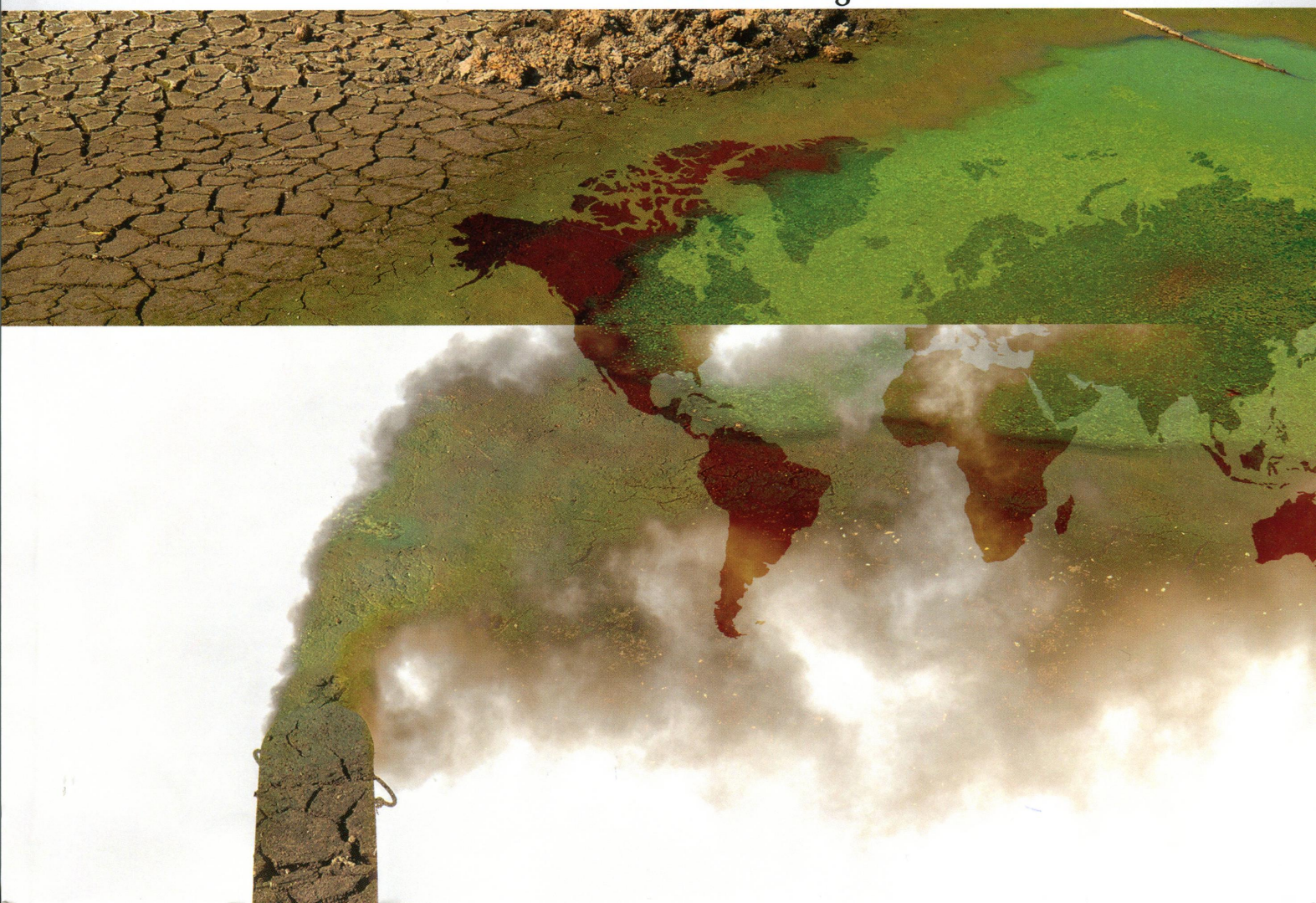
ISSN 0269-7491

ENVIRONMENTAL POLLUTION

EDITOR-IN-CHIEF

W.J. Manning

**SPECIAL SECTION: Inventory, Modeling and Climate Impacts of
Greenhouse Gas Emissions (GHG's) and Aerosols
in the Asian Region**



CONTENTS

Volume 195 December 2014

- 1 Levels, distribution and human exposure of new non-BDE brominated flame retardants in the indoor dust of China**
H. Qi, W.-L. Li, L.-Y. Liu, Z.-F. Zhang, N.-Z. Zhu, W.-W. Song, W.-L. Ma, Y.-F. Li
Higher level of NBFRs was found in indoor dust in North China than that in South China, as well as in urban/public than rural/family.
- 9 Associations of accumulated exposure to persistent organic pollutants with serum lipids and obesity in an adult cohort from Southern Spain**
J.P. Arrebola, R. Ocaña-Riola, A.L. Arrebola-Moreno, M. Fernández-Rodríguez, P. Martín-Olmedo, M.F. Fernández, N. Olea
We found both non-linear and linear associations of accumulated exposure to persistent organic pollutants with serum lipids and obesity in a cohort of 298 individuals.
- 16 Status of phthalate esters contamination in agricultural soils across China and associated health risks**
L. Niu, Y. Xu, C. Xu, L. Yun, W. Liu
Geographic patterns, sources and human health risks of phthalate esters in agricultural soils across China were investigated.
- 24 Dose-response relationship between polycyclic aromatic hydrocarbon metabolites and risk of diabetes in the general Chinese population**
L. Yang, Y. Zhou, H. Sun, H. Lai, C. Liu, K. Yan, J. Yuan, T. Wu, W. Chen, X. Zhang
Elevated PAHs metabolites were dose-responsive related to increased risk of diabetes in the general Chinese population.
- 31 Cotransport of multi-walled carbon nanotubes and titanium dioxide nanoparticles in saturated porous media**
X. Wang, L. Cai, P. Han, D. Lin, H. Kim, M. Tong
The cotransport behavior of MWCNTs and nano-TiO₂ in water saturated porous media is far more complex than the transport of individual nanoparticles.
- 39 On the use of an explicit chemical mechanism to dissect peroxy acetyl nitrate formation**
L. Xue, T. Wang, X. Wang, D.R. Blake, J. Gao, W. Nie, R. Gao, X. Gao, Z. Xu, A. Ding, Y. Huang, S. Lee, Y. Chen, S. Wang, F. Chai, Q. Zhang, W. Wang
Master Chemical Mechanism advances understanding of PAN photochemistry to species level.
- 48 Spatial and temporal trends in brominated flame retardants in seabirds from the Pacific coast of Canada**
A. Miller, J.E. Elliott, K.H. Elliott, M.F. Guigueno, L.K. Wilson, S. Lee, A. Idrissi
Regulations to control PBDEs have resulted in decreasing concentrations in seabird eggs, whereas for HBCDD, where no regulations currently exist, concentrations continue to increase.
- 56 Urban snow indicates pollution originating from road traffic**
K. Kuoppamäki, H. Setälä, A.-L. Rantalainen, D.J. Kotze
Pollutants in urban snow were mainly traffic-derived in this study, providing useful information for managing pollution in northern cities.
- 64 Particle-bound PAHs quantification using a 3-stages cascade impactor in French indoor environments**
C. Liaud, T. Dintzer, V. Tschamber, G. Trouve, S. Le Calvé
This study shows that 3-stages cascade impactor is a useful sampling method which can be applied to investigate both particulate and PAHs size distribution in indoor environments.
- 73 The impact of an urban park on air pollution and noise levels in the Mediterranean city of Tel-Aviv, Israel**
P. Cohen, O. Potchter, I. Schnell
A treed covered urban park is an effective tool for noise level attenuation and air quality improvement, in addition to its contribution for thermal discomfort relief.
- 84 Characterization of nitrogen-rich biomaterial-derived biochars and their sorption for aromatic compounds**
M. Zhang, L. Shu, X. Shen, X. Guo, S. Tao, B. Xing, X. Wang
The aromatic components in N-rich biomaterial-origin biochars regulate sorption of aromatics through hydrophobic interactions.

Continued on inside back cover

(Abstracted/indexed in: AGRICOLA database; Air Pollution Control Association Journal; Biological and Agricultural Index; CAB ABSTRACTS database; Elsevier BIOBASE/Current Awareness in Biological Sciences; Cambridge Scientific Abstracts; Chemical Abstracts; Current Contents/Agriculture, Biology & Environmental Sciences; Environment Abstracts; Environmental Periodicals Bibliography; Energy Information-Abstracts; EMBASE/Excerpta Medica; Geo Abstracts; GEOBASE; Index Medicus/MEDLINE/PubMed; Thomson Scientific GeoSciTech; Science Citation Index; SciSearch). Also covered in the abstract and citation database Scopus®. Full text available on ScienceDirect®.



0269-7491(201412)195:1-C



CONTENTS—Continued from outside back cover

- 91 **Surface water geochemical and isotopic variations in an area of accelerating Marcellus Shale gas development**
A.J. Pelak, S. Sharma
Use of geochemistry and stable isotopes to distinguish sources of water pollution.
- 101 **Passive sampling of nonpolar contaminants at three deep-ocean sites**
K. Booi, R. van Bommel, H.M. van Aken, H. van Haren, G.-J.A. Brummer, H. Ridderinkhof
Passive sampling is a promising method for assessing nonpolar contaminants in the deep ocean.
- 109 **Incubation stage and polychlorinated biphenyl (PCB) congener patterns in an altricial and precocial bird species**
C.M. Custer, T.W. Custer, S. Thyen, P.H. Becker
Results from an altricial and a precocial bird species showed that the stage of incubation was not an important consideration when evaluating PCB congeners.
- 115 **Does an analysis of polychlorinated biphenyl (PCB) distribution in mountain soils across China reveal a latitudinal fractionation paradox?**
Q. Zheng, L. Nizzetto, M.D. Mulder, O. Sáňka, G. Lammel, J. Li, H. Bing, X. Liu, Y. Jiang, C. Luo, G. Zhang
Exposure to sources with different characteristics in different regions can produce PCB latitudinal patterns opposite to expectations from the fractionation theory.
- 123 **Deposition patterns and transport mechanisms for the endocrine disruptor 4-nonylphenol across the Sierra Nevada Mountains, California**
R. Lyons, K. Van de Bittner, S. Morgan-Jones
Dust-borne 4-nonylphenol, a non-polar endocrine disruptor, deposits across the Sierra Nevada Mountains, CA, leaving high elevations shielded and accumulating at low elevations.
- 133 **The relationship between metal toxicity and biotic ligand binding affinities in aquatic and soil organisms: A review**
M.M. Ardestani, N.M. van Straalen, C.A.M. van Gestel
Toxicity was correlated with the conditional binding constants for all metals in aquatic and soil ecosystems.
- 148 **Elemental bioimaging of tissue level trace metal distributions in rice seeds (*Oryza sativa* L.) from a mining area in China**
P. Basnet, D. Amarasiwardena, F. Wu, Z. Fu, T. Zhang
Elemental bioimages showed the highest concentrations of Zn in the embryo and accumulation of Cd and Sb in the rice endosperm with presence of the more toxic Sb (III).
- 157 **Exposure to polycyclic aromatic hydrocarbons in urban environments: Health risk assessment by age groups**
A.C. Amarillo, I. Tavera Busso, H. Carreras
Carcinogenic risk due to PAHs in urban environments.
- 163 **Assessment of floating plastic debris in surface water along the Seine River**
J. Gasperi, R. Dris, T. Bonin, V. Rocher, B. Tassin
Some 27 tons of floating plastic debris are intercepted annually by River Seine boom networks, which corresponds to 2.3 g per inhabitant per year.
- 167 **Source apportionment of atmospheric PM_{2.5}-bound polycyclic aromatic hydrocarbons by a PMF receptor model. Assessment of potential risk for human health**
M.S. Callén, A. Iturmendi, J.M. López
A potential risk of PAH exposure was found in Zaragoza, Spain for episodes exceeding the limit values of PM_{2.5} and the lower assessment threshold of BaP according to EU Directives.
- 178 **A whole-cell bioreporter approach for the genotoxicity assessment of bioavailability of toxic compounds in contaminated soil in China**
Y. Song, B. Jiang, S. Tian, H. Tang, Z. Liu, C. Li, J. Jia, W.E. Huang, X. Zhang, G. Li
A solid-phase contact bioreporter assay for soil genotoxins provides new insight in the study of the bioavailability of contaminants in soil and a rapid screening tool for risk assessment.
- 185 **Ecological responses to contamination: A meta-analysis of experimental marine studies**
A.L. O'Brien, M.J. Keough
Meta-analysis highlights the scarcity of ecologically relevant contamination studies.
- 192 **Exposure of general population to PBDEs: A Progressive Total Diet Study in South Korea**
K.-H. Nguyen, H. Pyo, J. Kim, E. Shin, Y.-S. Chang
This is the first Total Diet Study completely performed on cooked and edible raw foods to assess the exposure of human to PBDEs through dietary, applied on South Korea population.
- 202 **Comparing *i*-Tree modeled ozone deposition with field measurements in a periurban Mediterranean forest**
A. Morani, D. Nowak, S. Hirabayashi, G. Guidolotti, M. Medori, V. Muzzini, S. Fares, G.S. Mugnozza, C. Calfapietra
*We proved that O₃ fluxes estimated by *i*-Tree model agreed with those from eddy covariance although a correction is needed to improve estimation in drought prone regions.*

330 Modeling of black carbon in Asia using a global-to-regional seamless aerosol-transport model

D. Goto

An evaluation of simulated black carbon using recent measurements over Asia was performed and led to a global-to-regional seamless aerosol-transport model for flexible resolution.

336 Potential for reducing air-pollutants while achieving 2 °C global temperature change limit target

T. Hanaoka, O. Akashi, K. Fujiwara, Y. Motoki, G. Hibino

Importance of showing co-benefits of reducing large amount of air pollutants due to GHG mitigation measures while achieving the 2 degree global temperature change limit target.