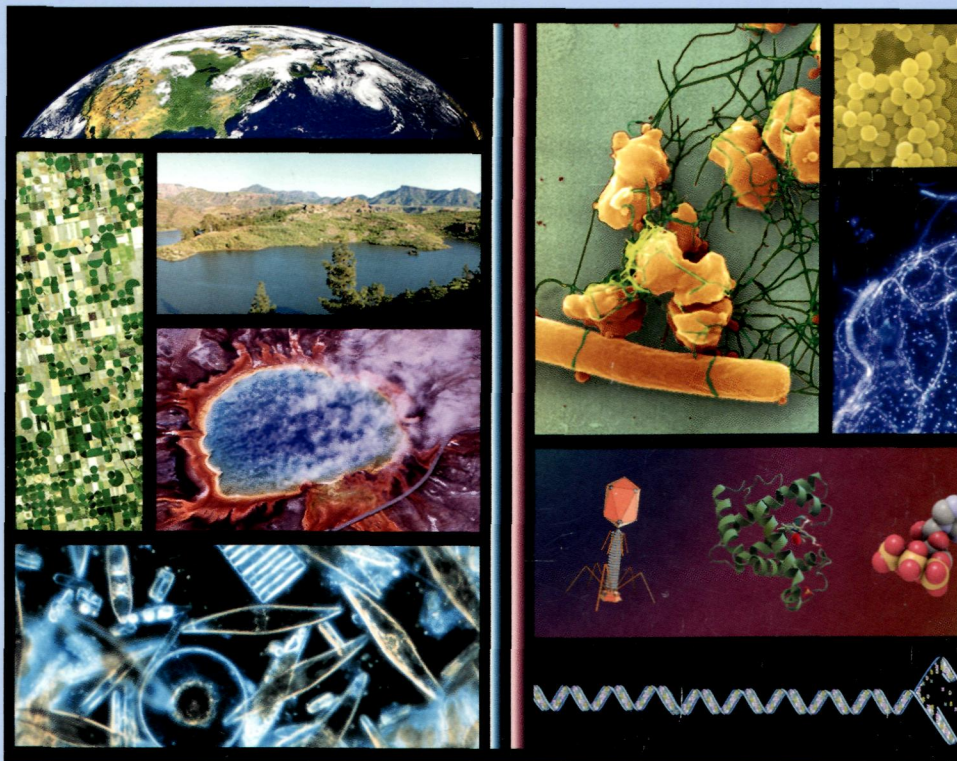


WFTM

# FEMS

## MICROBIOLOGY LETTERS

Volume 338  
Issue 1  
January 2013  
ISSN 0378-1097



  
WILEY-  
BLACKWELL

FEDERATION OF EUROPEAN  
MICROBIOLOGICAL SOCIETIES  
**FEMS**

Discover this journal online at  
**WILEY** ONLINE LIBRARY  
[wileyonlinelibrary.com/journal/femsle](http://wileyonlinelibrary.com/journal/femsle)

***FEMS Microbiology Letters***

© Federation of European Microbiological Societies. Published by John Wiley & Sons Ltd. All rights reserved

***January 2013***  
Volume 338, Issue 1

Pages 1–106

***MiniReviews***

***Beware of proteins bearing gifts: protein antibiotics that use iron as a Trojan horse (pages 1–9)***

Rhys Grinter, Joel Milner and Daniel Walker

Beyond the wall: *Candida albicans* secret(e)s to survive (pages 10–17)

Alice G. Sorigo, Clemens J. Heilmann, Stanley Brul, Chris G. de Koster and Frans M. Klis

***Research Letters***

***The role of rpoS in Escherichia coli O157 manure-amended soil survival and distribution of allelic variations among bovine, food and clinical isolates (pages 18–23)***

Angela H.A.M. van Hoek, Henk J.M. Aarts, El Bouw, Wendy M. van Overbeek and Eelco Franz

***The role of ionic interactions in the adherence of the Staphylococcus epidermidis adhesin SdrF to prosthetic material (pages 24–30)***

Faustino A. Toba, Livia Visai, Sheetal Trivedi and Franklin D. Lowy

***Putative paired small multidrug resistance family proteins PsmrAB, the homolog of YvdSR, actually function as a novel two-component Na<sup>+</sup>/H<sup>+</sup> antiporter (pages 31–38)***

Juquan Jiang, Lei Wang, Hua Zhang, Haiping Wu, Haipeng Huang and Lifu Yang

***Analysis of energy sources for Mycoplasma penetrans gliding motility (pages 39–45)***

Dominika A. Jurkovic, Michael R. Hughes and Mitchell F. Balish

***Exchange of type II dockerin-containing subunits of the Clostridium thermocellum cellulosome as revealed by SNAP-tags (pages 46–53)***

Benjamin H. Waller, Daniel G. Olson, Devin H. Currie, Adam M. Guss and Lee R. Lynd

***A phosphotransferase system permease is a novel component of CadC signaling in Salmonella enterica (pages 54–61)***

Yong Heon Lee, Sinyeon Kim, Ji Hye Kim, Iel Soo Bang, In Soo Lee, Seong Ho Bang and Yong Keun Park

***Two DNA sites for MelR in the same orientation are sufficient for optimal MelR-dependent repression at the Escherichia coli melR promoter (pages 62–67)***

Mohamed S. Elrobh, Christine L. Webster, Shivanthi Samarasinghe, Danielle Durose and Stephen J.W. Busby

***Identification of Porphyromonas gingivalis proteins secreted by the Por secretion system (pages 68–76)***

Keiko Sato, Hideharu Yukitake, Yuka Narita, Mikio Shoji, Mariko Naito and Koji Nakayama

***Denitrification-derived nitric oxide modulates biofilm formation in Azospirillum brasilense (pages 77–85)***

Andrés Arruebarrena Di Palma, Cintia M. Pereyra, Lizbeth Moreno Ramirez, María L. Xiqui Vázquez, Beatriz E. Baca, María A. Pereyra, Lorenzo Lamattina and Cecilia M. Creus

***Identification of type II toxin–antitoxin modules in Burkholderia pseudomallei (pages 86–94)***

Aaron Butt, Claudia Müller, Nicholas Harmer and Richard W. Titball

***The ability of soil bacteria to receive the conjugative IncP1 plasmid, pKJK10, is different in a mixed community compared to single strains (pages 95–100)***

Claudia I. de la Cruz-Perera, Dawei Ren, Marine Blanchet, Luc Dendooven, Rodolfo Marsch, Søren J. Sørensen and Mette Burmølle

***Role of a short tandem leucine/arginine repeat in strong mutator phenotype acquisition in a clinical isolate of Salmonella Typhimurium (pages 101–106)***

Hervé Le Bars, Latifa Bousarghin, Martine Bonnaure-Mallet and Anne Jolivet-Gougeon