

FEMS

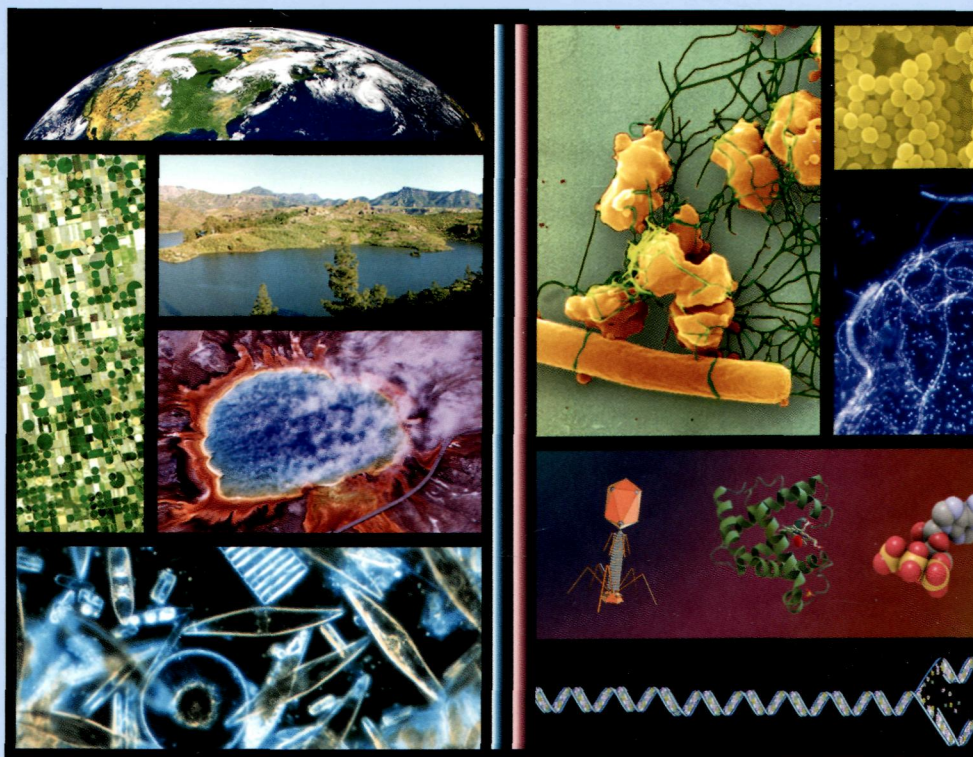
MICROBIOLOGY LETTERS

Volume 345

Issue 2

August 2013

ISSN 0378-1097



WILEY
Blackwell



Discover this journal online at
WILEY ONLINE LIBRARY
wileyonlinelibrary.com/journal/femsle

MiniReviews

- 77 Nitrogen regulation of virulence in clinically prevalent fungal pathogens
I. Russel Lee, C.A. Morrow and J.A. Fraser
- 85 The challenge of constructing, classifying, and representing metabolic pathways
R. Caspi, K. Dreher and P.D. Karp

Research Letters

- 94 Enhancing beta-carotene production in *Saccharomyces cerevisiae* by metabolic engineering
Q. Li, Z. Sun, J. Li and Y. Zhang
- 102 Inhibitory effect of *Pseudomonas putida* nitrogen-related phosphotransferase system on conjugative transfer of IncP-9 plasmid from *Escherichia coli*
K. Inoue, R. Miyazaki, Y. Ohtsubo, Y. Nagata and M. Tsuda
- 110 Analysis of putative nonulosonic acid biosynthesis pathways in *Archaea* reveals a complex evolutionary history
L. Kandiba and J. Eichler
- 121 The effects of different disease-resistant cultivars of banana on rhizosphere microbial communities and enzyme activities
J. Sun, M. Peng, Y. Wang, W. Li and Q. Xia
- 127 Amoebicidal activity of phytosynthesized silver nanoparticles and their *in vitro* cytotoxicity to human cells
H.P. Borase, C.D. Patil, I.P. Sauter, M.B. Rott and S.V. Patil
- 132 *bkaR* is a TetR-type repressor that controls an operon associated with branched-chain keto-acid metabolism in *Mycobacteria*
R.J.C. Balhana, S.N. Swanston, S. Coade, M. Withers, M.H. Sikder, N.G. Stoker and S.L. Kendall
- 141 High saturated fatty acids proportion in *Escherichia coli* enhances the activity of ice-nucleation protein from *Pantoea ananatis*
F.Yu, X. Liu, Y. Tao and K. Zhu
- 147 Contribution of asparagine 346 residue to the carbapenemase activity of CMY-2 β -lactamase
S. Dahyot, I. Broutin, C. de Champs, H. Guillon and H. Mammeri