

FEMS

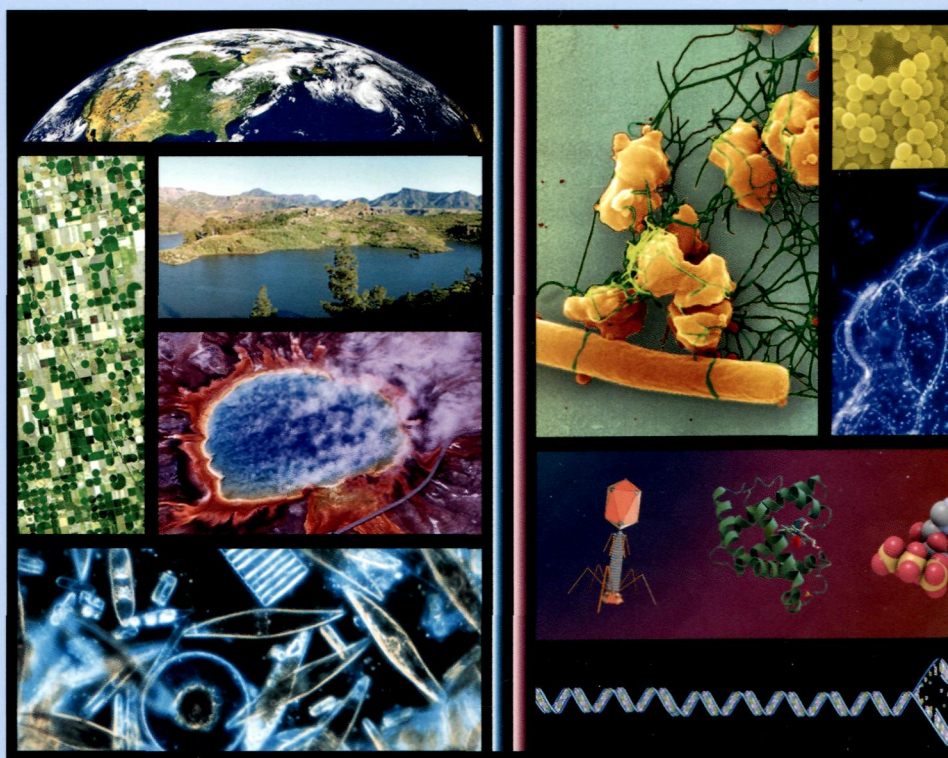
MICROBIOLOGY LETTERS

Volume 347

Issue 2

October 2013

ISSN 0378-1097



WILEY
Blackwell



Discover this journal online at
WILEY ONLINE LIBRARY
wileyonlinelibrary.com/journal/femsle

Genome Announcement

- 93 Draft genome sequences of two super-extensively drug-resistant isolates of *Mycobacterium tuberculosis* from China
N. Lin, Z. Liu, J. Zhou, S. Wang and J. Fleming

Research Letters

- 97 Heavy metal tolerance genes alter cellular thermodynamics in *Pseudomonas putida* and river *Pseudomonas* spp. and influence amebal predation
M.R. McTee, S.M. Gibbons, K. Feris, N.S. Gordon, J.E. Gannon and P.W. Ramsey
- 107 An attenuated mutant of the Rv1747 ATP-binding cassette transporter of *Mycobacterium tuberculosis* and a mutant of its cognate kinase, PknF, show increased expression of the efflux pump-related *iniBAC* operon
V.L. Spivey, R.H. Whalan, E.M.A. Hirst, S.J. Smerdon and R.S. Buxton
- 116 Is biofilm formation related to the hypermutator phenotype in clinical *Enterobacteriaceae* isolates?
B. Kovacs, S.L. Gall-David, P. Vincent, H.L. Bars, S. Buffet-Bataillon, M. Bonnaure-Mallet and A. Jolivet-Gougeon
- 123 Harzianic acid: a novel siderophore from *Trichoderma harzianum*
F. Vinale, M. Nigro, K. Sivasithamparam, G. Flematti, E.L. Ghisalberti, M. Ruocco, R. Varlese, R. Marra, S. Lanzuise, A. Eid, S.L. Woo and M. Lorito
- 130 Characterization of bacterial communities associated with the pine sawyer beetle *Monochamus galloprovincialis*, the insect vector of the pinewood nematode *Bursaphelenchus xylophilus*
C.S.L. Vicente, F.X. Nascimento, M. Espada, P. Barbosa, K. Hasegawa, M. Mota and S. Oliveira
- 140 Effects on IS1 transposition frequency of a mutation in the *ygiD* gene involved in an essential tRNA modification in *Escherichia coli*
C. Hashimoto, M. Hashimoto, H. Honda and J.-I. Kato
- 149 Chromosomal circularization of the model *Streptomyces* species, *Streptomyces coelicolor* A3(2)
Y. Nindita, T. Nishikawa, K. Arakawa, G. Wang, K. Ochi, Z. Qin and H. Kinashi
- 156 DNA barcoding the commercial Chinese caterpillar fungus
L. Xiang, J. Song, T. Xin, Y. Zhu, L. Shi, X. Xu, X. Pang, H. Yao, W. Li and S. Chen
- 163 Expression patterns of key iron and oxygen metabolism genes during magnetosome formation in *Magnetospirillum gryphiswaldense* MSR-1
Q. Wang, J.-X. Liu, W.-J. Zhang, T.-W. Zhang, J. Yang and Y. Li