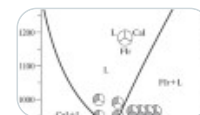




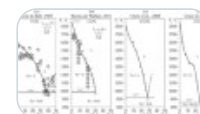
12 articles in this issue

### **The $\text{CaCO}_3$ – $\text{CaF}_2$ Binary at 6 GPa**



**OriginalPaper** | 27 January 2026 | Pages: 1145 - 1153

### **The Fe–S Binary at 6 GPa**



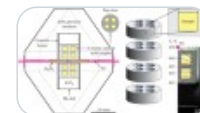
**OriginalPaper** | 27 January 2026 | Pages: 1154 - 1166

### **The Joins $\text{FeS}_2$ – $\text{NiS}_2$ and $\text{FeS}_2$ –S at 6 GPa**



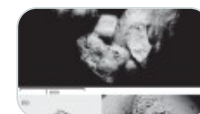
**OriginalPaper** | 27 January 2026 | Pages: 1167 - 1173

### **Subsolidus Phase Relations in the System Fe–Ni–S at 450°C and 6 GPa**



**OriginalPaper** | 27 January 2026 | Pages: 1174 - 1183

### **Experimental Determination of $\text{PdS}_{(\text{cr})}$ Solubility in Sulfide Fluids to 490°C, 1000 bar. Thermodynamic Properties of (Hydro)Sulfide Complexes of Palladium and Platinum**



**OriginalPaper** | Open access | 27 January 2026 | Pages: 1184 - 1206

### **Geochemical Characteristics and Geological Significance of Helium in Geo-Thermal Fields on Both Sides of the Cangdong Fault, China**



**OriginalPaper** | 01 November 2025 | Pages: 1207 - 1222

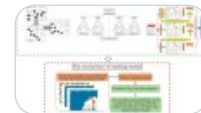
### **Study on the Source and Genesis of Geothermal Water in the Central and Eastern Inner Mongolia**



**OriginalPaper** | 18 September 2025 | Pages: 1223 - 1242

---

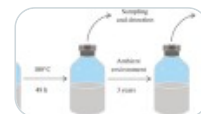
## **Geochemical Anomaly Detection Cooperatively Driven by Multiple Models Based on Stacking Framework**



**OriginalPaper** | 27 January 2026 | Pages: 1243 - 1255

---

## **A Microbiological Sulfamox Process Emerges in Chemical Reaction Networks**



**OriginalPaper** | 18 September 2025 | Pages: 1256 - 1262

---

## **Erratum to: Fe-Oxide Microspherule Fragment from Chang'E-5 Soil Sample: Possible Evidence for Lunar Fumarole Activity**

**Erratum** | Open access | 27 January 2026 | Pages: 1263 - 1263

---

## **Erratum to: Metal-Rich Ungrouped Chondrite Northwest Africa 13202**

**Erratum** | Open access | 27 January 2026 | Pages: 1264 - 1264

---

## **Erratum to: Halogens (F, Cl) in Natural Diamond: SIMS Study**

**Erratum** | Open access | 27 January 2026 | Pages: 1265 - 1265

---