



12 articles in this issue

### **Orogenic Gold Deposits: Geodynamics and Systematics (25 Years—Some Results)**

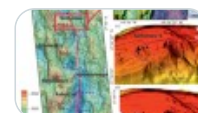
OriginalPaper | Open access | 10 January 2026 | Pages: 723 - 732

### **Mineral Composition and Formation Conditions of Copper-Sulfide Ores of the Aginskoe Au–Ag Deposit, Kamchatka, Russia**



OriginalPaper | Open access | 10 January 2026 | Pages: 733 - 749

### **$^{230}\text{Th}/\text{U}$ Dating of Seafloor Massive Sulfides from the Semenov-5 Hydrothermal Field, Mid-Atlantic Ridge**



OriginalPaper | Open access | 10 January 2026 | Pages: 750 - 759

### **Devonian Gabbroids of the NW Rudny Altai as Indicators of the Lithospheric Mantle Contribution to Petrogenesis and Ore Formation**



OriginalPaper | 10 January 2026 | Pages: 760 - 785

### **The Upper Myaundzha Ore Cluster: a Porphyry-Epithermal System in the Central Segment of the Yana–Kolyma Orogenic Belt**



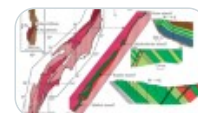
OriginalPaper | 10 January 2026 | Pages: 786 - 798

### **Telluride Mineralogy in Ores of the Birgilda Porphyry Copper Deposit (South Urals, Russia)**



OriginalPaper | 10 January 2026 | Pages: 799 - 811

### **Mineralogical and Geochemical Features of Fe–Ti Ore Occurrences of the Kopan and Matkal Massifs (Kusa-Kopan Complex, South Urals)**



OriginalPaper | 10 January 2026 | Pages: 812 - 834

**Lithogeochemistry of the Shurlovaara Banded Iron Formation, Kostomuksha Greenstone Belt, Karelian Craton, Russia**



OriginalPaper | 10 January 2026 | Pages: 835 - 851

---

**Eudialyte-Group Minerals in Rare-Metal Nepheline Syenites of the Khashatyn-Khar Massif (Northwestern Mongolia): Indicators of Potential Rare-Metal Ore Mineralization**



OriginalPaper | 10 January 2026 | Pages: 852 - 871

---

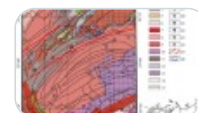
**Tourmaline from Quartz Veins Associated with Rare Metal Granites of Severny Pluton, Chukotka, Northeastern Russia**



OriginalPaper | 10 January 2026 | Pages: 872 - 894

---

**A Predictive and Prospecting Model of the Tuyukan Uranium Cluster Area Based on Earth Remote-Sensing Data and a Structural–Tectonophysical Approach**



OriginalPaper | 10 January 2026 | Pages: 895 - 909

---

**Ore Mineralization in the Kharbei Metamorphic Complex in the Zone of the Khadata–Khanmei Thrust (Polar Urals)**



OriginalPaper | 10 January 2026 | Pages: 910 - 924

---