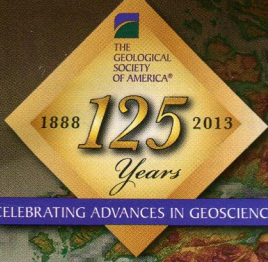


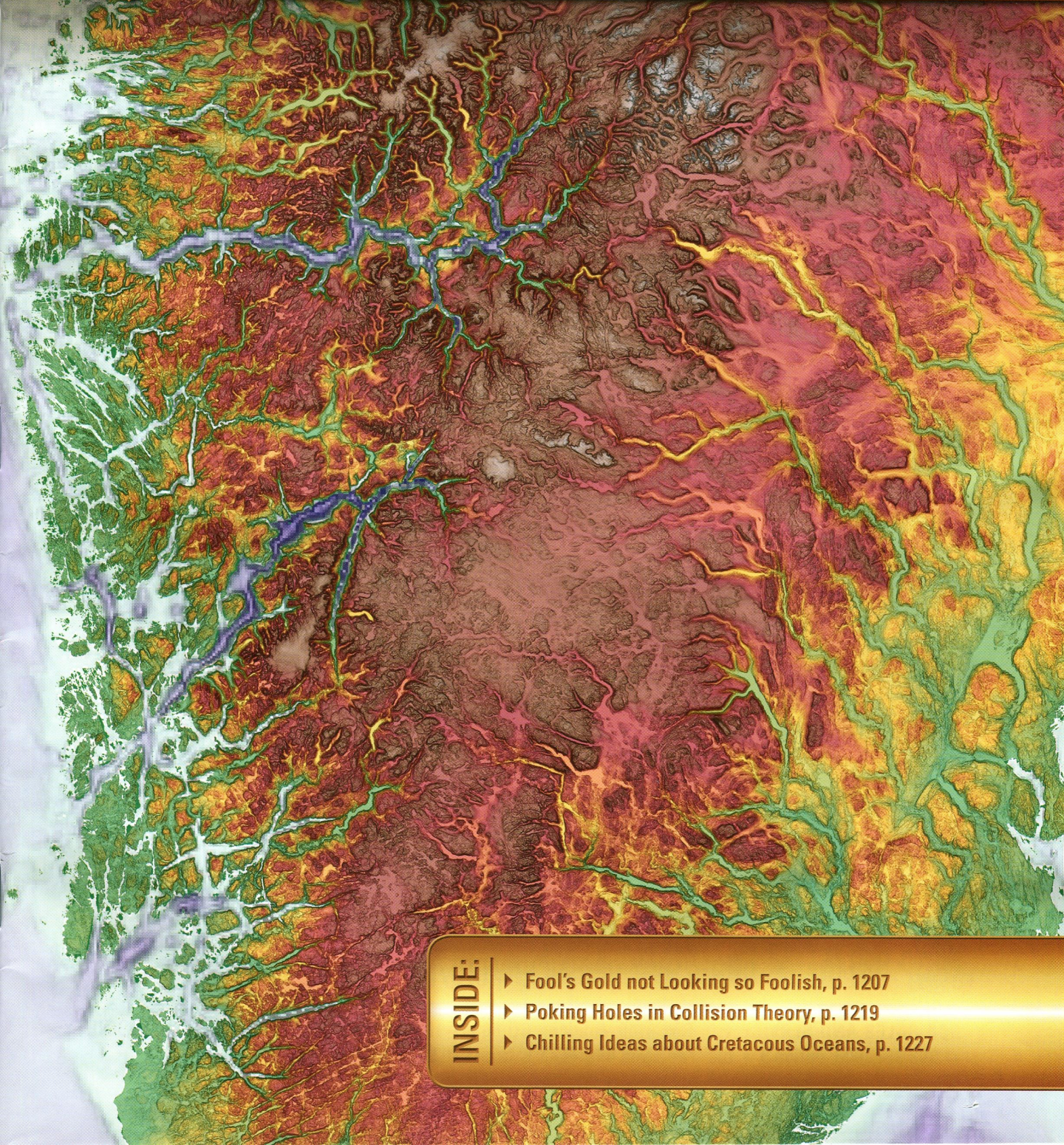
ПН
G37/a



GEOLOGY

ISSN 0091-7613

DECEMBER 2013 • VOL. 41 NO. 12 • P. 1201-1264



INSIDE:

- ▶ Fool's Gold not Looking so Foolish, p. 1207
- ▶ Poking Holes in Collision Theory, p. 1219
- ▶ Chilling Ideas about Cretaceous Oceans, p. 1227



- 1203 Selective glacial erosion on the Norwegian passive margin**
Adrian M. Hall, Karin Ebert, Johan Kleman, Atle Nesje, and Dag Ottesen
- 1207 Does gold in orogenic deposits come from pyrite in deeply buried carbon-rich sediments?: Insight from volatiles in fluid inclusions**
Damien Gaboury
- 1211 Tectonic forcing of Early to Middle Jurassic seawater Sr/Ca**
Clemens V. Ullmann, Stephen P. Hesselbo, and Christoph Korte
- 1215 What does a mean mean? The temporal evolution of detrital cosmogenic denudation rates in a transient landscape**
Jane K. Willenbring, Nicole M. Gasparini, Benjamin T. Crosby, and Gilles Brocard
- 1219 Three-dimensional insight into central-Alpine collision: Lower-plate or upper-plate indentation?**
Claudio L. Rosenberg and Eduard Kissling
- 1223 Altered regional sediment transport regime after a large typhoon, southern Taiwan**
Michelle Y.-F. Huang and David R. Montgomery
- 1227 Late Cretaceous winter sea ice in Antarctica?**
Vanessa C. Bowman, Jane E. Francis, and James B. Riding
- 1231 A re-evaluation of the Pleistocene behavior of the Scoresby Sund sector of the Greenland Ice Sheet**
Jan Sverre Laberg, Matthias Forwick, Katrine Husum, and Tove Nielsen
- 1235 Riverine mixing and fluvial iron formation: A new type of Precambrian biochemical sediment**
Peir K. Pufahl, Franco Pirajno, and Eric E. Hiatt
- 1239 Subduction and deformation of the continental lithosphere in response to plate and crust-mantle coupling**
E. Willingshofer, D. Sokoutis, S.W. Luth, F. Beekman, and S. Cloetingh
- 1243 Kimberlite (U-Th)/He dating links surface erosion with lithospheric heating, thinning, and metasomatism in the southern African Plateau**
Jessica R. Stanley, Rebecca M. Flowers, and David R. Bell
- 1247 Glacier slip and seismicity induced by surface melt**
Peter L. Moore, J. Paul Winberry, Neal R. Iverson, Knut A. Christianson, Sridhar Anandkrishnan, Miriam Jackson, Mark E. Mathison, and Denis Cohen
- 1251 Volcanic ash reveals time-transgressive abrupt climate change during the Younger Dryas**
Christine S. Lane, Achim Brauer, Simon P.E. Blockley, and Peter Dulski
- 1254 ERRATUM: Research Focus—Shaking Loose: Sand volcanoes and Jurassic earthquakes**
Christie Rowe
- 1255 RESEARCH FOCUS: On the source of orogenic gold**
Andrew G. Tomkins
- 1257 Author Index**
-
- ONLINE FORUMS
- Large-scale active slump of the southeastern flank of Pico Island, Azores**
e301 **COMMENT:** Neil C. Mitchell, Rui Quartau, and José Madeira
e302 **REPLY:** A. Hildenbrand, F.O. Marques, J. Catalão, C.M.S. Catita, and A.C.G. Costa
- Colorado River chronostratigraphy at Lee's Ferry, Arizona, and the Colorado Plateau bull's-eye of incision**
e303 **COMMENT:** Karl Karlstrom, Andy Darling, Ryan Crow, Greg Lazear, Andres Aslan, Darryl Granger, Eric Kirby, Laurie Crossey, and Kelin Whipple
e304 **REPLY:** Joel L. Pederson, Alan J. Hidy, John C. Gosse, and Tammy M. Rittenour
- Determining gypsum growth temperatures using monophasic fluid inclusions—Application to the giant gypsum crystals of Naica, Mexico**
e305 **COMMENT:** Paolo S. Garofalo, P. Forti, and D. Günther
e306 **REPLY:** Yves Krüger, Juan Manuel Garcia-Ruiz, Àngels Canals, Dominik Marti, Martin Frenz, and Alexander E.S. Van Driessche
- 3.8 Ga zircons sampled by Neogene ignimbrite eruptions in Central Anatolia**
e307 **COMMENT:** Serhat Köksal, Fatma Toksoy-Köksal, M. Cemal Göncüoğlu, Andreas Möller, Axel Gerdes, and Dirk Frei
e308 **REPLY:** Jean-Louis Paquette and Jean-Luc Le Pennec
- Splay fault slip during the M_w 8.8 2010 Maule Chile earthquake**
e309 **COMMENT:** Richard W. Allmendinger, Gabriel González, José Cembrano, Felipe Aron, and Gonzalo Yáñez
e310 **REPLY:** Daniel Melnick, Marcos Moreno, Mahdi Motagh, Marco Cisternas, and Robert L. Wesson
- Long term east-west asymmetry in monsoon rainfall on the Tibetan Plateau**
e311 **COMMENT:** XiangJun Liu, ZhongPing Lai, ChaoLu Yi, and YanBin Lei
e312 **REPLY:** Adam M. Hudson and Jay Quade

GEOLOGY

GEOLOGY publishes timely, innovative, and provocative articles relevant to its international audience, representing research from all fields of the geosciences.

GEOLOGY (ISSN 0091-7613 USPS 994-580 CODEN GLGYB) is published monthly by the Geological Society of America, Inc. (GSA), with offices at 3300 Penrose Place, Boulder, Colorado, USA. Mailing address is P.O. Box 9140, Boulder, CO 80301-9140, USA. Periodicals postage paid at Boulder, Colorado, and at additional mailing offices. Postmaster: Send address changes to *Geology*, Sales & Service, P.O. Box 9140, Boulder, CO 80301-9140, USA.

Copyright © 2013, The Geological Society of America, Inc. (GSA). All rights reserved. Copyright not claimed on content prepared wholly by U.S. government employees within the scope of their employment. Individual scientists are hereby granted permission, without fees or further requests to GSA, to use a single figure, a single table, and/or a brief paragraph of text in other subsequent works and to make unlimited photocopies of items in this journal for noncommercial use in classrooms to further education and science. In addition, an author has the right to use his or her article or a portion of the article in a thesis or dissertation without requesting permission from GSA, provided the bibliographic citation and the GSA copyright credit line are given on the appropriate pages. For any other form of capture, reproduction, and/or distribution of any item in this journal by any means, contact: Permissions, GSA, P.O. Box 9140, Boulder, CO 80301-9140, USA, fax +1-303-357-1073, editing@geosociety.org; reference *Geology*, ISSN 0091-7613. Permission is granted to authors to post the abstracts only of their articles on their own or their organization's Web site providing the posting includes this reference: "The full paper was published in the Geological Society of America's journal *Geology*, [include year, month, and page numbers, if known, where the article appears or will appear]."

GSA provides this and other forums for the presentation of diverse opinions and positions by scientists worldwide, regardless of their race, citizenship, gender, religion, sexual orientation, or political viewpoint. Opinions presented in this publication do not reflect official positions of the Society.

SUBSCRIPTIONS for 2013 calendar year. GSA Members and Fellows: \$89 (print + online), \$89 (international print + online), \$60 (online only). GSA Student and K–12 Teacher Members: \$45 (print only; online included in membership). Nonmembers and institutions: \$965 (print + online). Details on subscription choices, formats, and pricing, at www.geosociety.org/pubs/. For all orders, call GSA Sales & Service at +1.888.443.4472 or +1.303.357.1000, or e-mail gsaservice@geosociety.org. Claims: for nonreceipt or damaged copies, please contact GSA Sales & Service. Claims are honored for one year; please allow sufficient delivery time (up to 8 weeks) for overseas copies.

GSA ONLINE

Organization home page: www.geosociety.org
Journals and books: www.gsapubs.org
Manuscript submission:
<http://www.editorialmanager.com/geology/>



EDITORS

Andrew Barth
Indiana University-Purdue University
+1.317.274.1243
ibsz100@iupu.edu

Rónadh Cox
Williams College, Massachusetts
+1.413.597.2297
geolsoc@williams.edu

Robert Holdsworth
Durham University
+44.191.33.42299
r.e.holdsworth@durham.ac.uk

James Spotila
Virginia Tech
+1.540.231.2109
spotila@vt.edu

Ellen Thomas
Yale University
+1.203.432.5928
Fax +1.203.432.3134
ellen.thomas@yale.edu

GEOLOGY STAFF

Director of Publications
Jeanette Hammann

Managing Editor
Lyne Yohe
lyohe@geosociety.org

Editorial Staff
Brook Smith
bsmith@geosociety.org

Production
Heather L. Sutphin

EDITORIAL BOARD

2011–2013
Jonathan Bull
Yildirim Dilek
David Farris
Bruce Houghton
Roberto Molina Garza
Chang Whan Oh
Ed J. Rhodes

2012–2014
Michele Cooke
Eric Cowgill
Bruce W. Fouke
Kliti Grice
Thomas A. Hickson
Melissa Lamb
Bill McClelland
Julian F. Menuge
John J. Walsh
Susan J. Webb
Kai Wünnemann
Douwe J.J. van Hinsbergen

2013–2015
David L. Barbeau, Jr.
Alexandru T. Codilean
Graeme Eagles
Caleb I. Fassett
Eric C. Ferré
Nicholas W. Hayman
Katharine W. Huntington
Mads Huuse
Laurent Montesi
Sean R. Mulcahy
Ali Polat
Brian Romans
Terry L. Spell
Eric, Tohver
Martin J. Van Kranendonk
Brian J. Yanites

GSA OFFICERS

Executive Director
John W. Hess

President
Suzanne Mahlburg Kay

Vice President
Harry McSween

Past President
George H. Davis

Treasurer
Jonathan G. Price

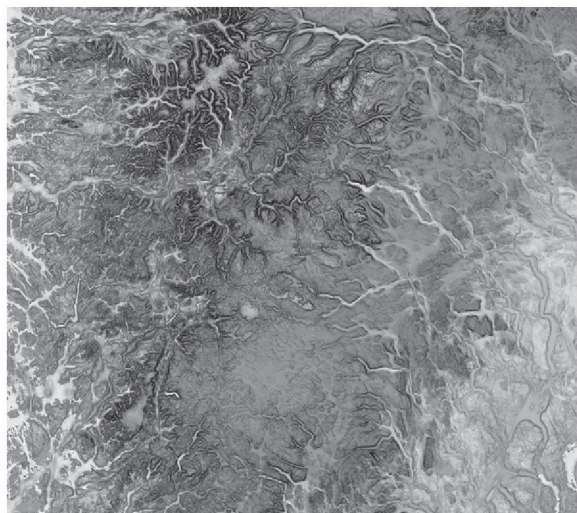
COUNCILORS

2010–2014:
Bruce R. Clark
Barbara L. Dutrow
Daniel Larsen

2011–2015
Janet S. Herman
John M. Holbrook
Robert J. Tracy

2012–2016
Isabel P. Montanez
Marilyn J. Suiter
William W. Simpkins

2013–2017
Elizabeth J. Catlos
John J. Clague
Neil Fishman



COVER: Southern Norway, shown in a digital elevation model with 20 m resolution. Elevations range from –600 to 2500 m above sea level. Elevations are shown in colors; the map is overlain with a half-transparent gray-shade slope map (the steeper the slope, the darker the gray) to give a three-dimensional impression. See "Selective glacial erosion on the Norwegian passive margin" by Hall et al., p. 1203–1206.

Image created by: Karin Ebert. Bathymetric data from GEBCO, General Bathymetric Chart of the Oceans. Digital elevation model metadata from Source@Norway Digital, www.norgedigital.no.

Cover design by: Heather L. Sutphin