

111  
G-37/02

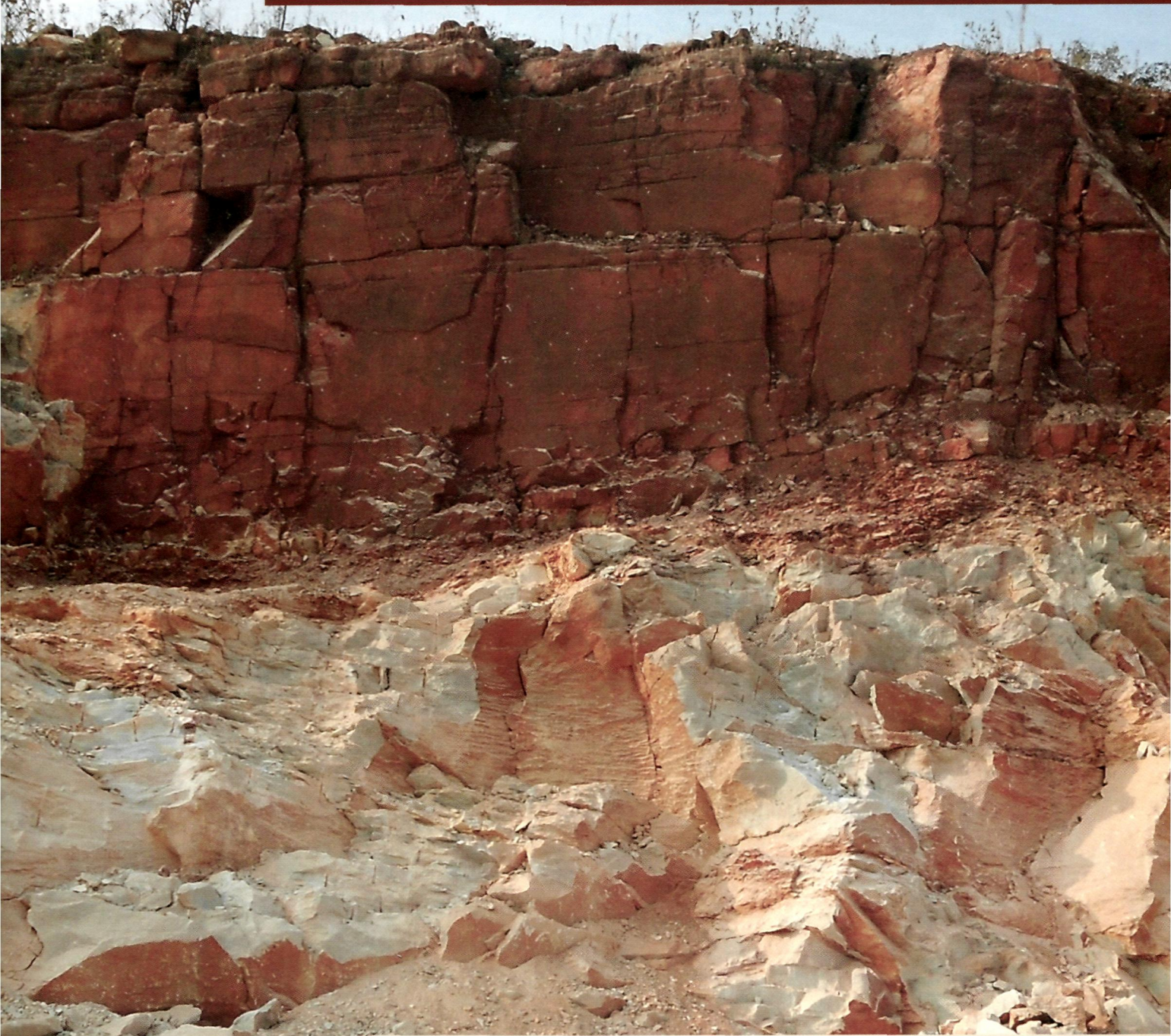


THE  
GEOLOGICAL  
SOCIETY  
OF AMERICA®

# GEOLOGY

ISSN 0091-7613

OCTOBER 2014 • VOL. 42 NO. 10 • P. 833-928



INSIDE

- ▶ Game of Thrones Dethroned: Wildfires in the Late Permian, p. 879
- ▶ Friday Night Blues: Quantifying Rapid and Unsteady Events, p. 891
- ▶ Coupling Near Poles Triggers Climate Change, p. 899
- ▶ Oxygen Pulses through the Archean, p. 923



# GEOLOGY

OCTOBER 2014 | VOLUME 42 | NUMBER 10

- 835 Global continental weathering trends across the Early Permian glacial to postglacial transition: Correlating high- and low-paleolatitude sedimentary records**  
Jianghai Yang, Peter A. Cawood, Yuansheng Du, Bin Feng, and Jiaxin Yan
- 839 Dynamic ups and downs of the Himalaya**  
Laurent Husson, Matthias Bernet, Stéphane Guillot, Pascale Huyghe, Jean-Louis Mugnier, Anne Replumaz, Xavier Robert and Peter Van der Beek
- 843 Permeability reduction of fractured rhyolite in volcanic conduits and its control on eruption cyclicality**  
Satoshi Okumura and Osamu Sasaki
- 847 Pacific plate deformation from horizontal thermal contraction**  
Corné Kreemer and Richard G. Gordon
- 851 A contrast in anisotropy across mid-lithospheric discontinuities beneath the central United States—A relic of craton formation**  
Erin A. Wirth and Maureen D. Long
- 855 Sub-decadal turbidite frequency during the early Holocene: Eel Fan, offshore northern California**  
Charles K. Paull, Mary McGann, Esther J. Sumner, Philip M. Barnes, Eve M. Lundsten, Krystle Anderson, Roberto Gwiadzda, Brian Edwards, and David W. Caress
- 859 Holocene Indian Ocean tsunami history in Sri Lanka**  
Kelly L. Jackson, Gregor P. Eberli, Falk Amelung, Melany A. McFadden, Andrew L. Moore, Eugene C. Rankey, and H.A.H. Jayasena
- 863 Transient explosions at open-vent volcanoes: The case of Stromboli (Italy)**  
L. Pioli, M. Pistolesi, and M. Rosi
- 867 Phosphorus zoning reveals dendritic architecture of olivine**  
Benoit Welsch, Julia Hammer, and Eric Hellebrand
- 871 Periplatform drift: The combined result of contour current and off-bank transport along carbonate platforms**  
Christian Betzler, Sebastian Lindhorst, Gregor P. Eberli, Thomas Lüdmann, Jürgen Möbius, Juliane Ludwig, Ilona Schutter, Marco Wunsch, John J.G. Reijmer, and Christian Hübscher
- 875 Transatlantic distribution of the Alaskan White River Ash**  
Britta J.L. Jensen, Sean Pyne-O'Donnell, Gill Plunkett, Duane G. Froese, Paul D.M. Hughes, Michael Sigl, Joseph R. McConnell, Matthew J. Amesbury, Paul G. Blackwell, Christel van den Bogaard, Caitlin E. Buck, Dan J. Charman, John J. Clague, Valerie A. Hall, Johannes Koch, Helen Mackay, Gunnar Mallon, Lynsey McColl, and Jonathan R. Pilcher
- 879 Latest Permian chars may derive from wildfires, not coal combustion**  
Victoria A. Hudspeth, Susan M. Rimmer, and Claire M. Belcher
- 882 Statement of Ownership**
- 883 An Indian Ocean tsunami triggered remotely by an onshore earthquake in Balochistan, Pakistan**  
Gösta Hoffmann, Sultan Al-Yahyai, Ghazala Naeem, Mareike Kociok, and Christoph Grützner
- 887 How waves shape salt marshes**  
Nicoletta Leonardi and Sergio Fagherazzi
- 891 Time-scale uncertainty of abrupt events in the geologic record arising from unsteady sedimentation**  
David B. Kemp and Philip F. Sexton
- 895 Microanalyses link sulfur from large igneous provinces and Mesozoic mass extinctions**  
Sara Callegaro, Don R. Baker, Angelo De Min, Andrea Marzoli, Kalotina Geraki, Hervé Bertrand, Cecilia Viti, and Fabrizio Nestola
- 899 Rapid shifts in subarctic Pacific climate between 138 and 70 ka**  
Lars Max, Lukas Belz, Ralf Tiedemann, Kirsten Fahl, Dirk Nürnberg, and Jan-Rainer Riethdorf
- 903 Fingerprints of late Neoproterozoic ridge subduction in the Pan-African Damara belt, Namibia**  
Francesca Meneghini, Alex Kisters, Ian Buick, and Åke Fagereng
- 907 From submarine continental accretion to arc-continent orogenic evolution: The thermal record in southern Taiwan**  
Lucas Mesalles, Frédéric Mouthereau, Matthias Bernet, Chung-Pai Chang, Andrew Tien-Shun Lin, Charlotte Fillon, and Xavier Sengelen
- 911 Hot mantle geotherms stabilize calcic carbonatite magmas up to the surface**  
Tahar Hammouda, Julien Chantel, Geeth Manthilake, Jérémy Guignard, and Wilson Crichton
- 915 The 2013 Lushan earthquake: Implications for seismic hazards posed by the Range Front blind thrust in the Sichuan Basin, China**  
Maomao Wang, Dong Jia, John H. Shaw, Judith Hubbard, Andreas Plesch, Yiquan Li, and Baojin Liu
- 919 Variations in angiosperm leaf vein density have implications for interpreting life form in the fossil record**  
Camilla Crifò, Ellen D. Currano, A. Baresch, and C. Jaramillo
- 923 Oxygenation of the Archean atmosphere: New paleosol constraints from eastern India**  
Joydip Mukhopadhyay, Quentin G. Crowley, Sampa Ghosh, Gautam Ghosh, Kalyan Chakrabarti, Brundaban Misra, Kyle Heron, and Sankar Bose
- 927 RESEARCH FOCUS: Linking plate tectonics and mantle flow to Earth's topography**  
Nicolas Flament

