



Volume 59, Issue 2

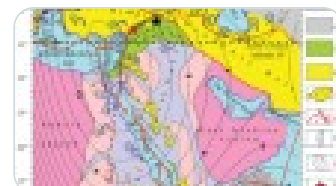
April 2025

5 articles in this issue

Giant Quasi-Ring Mantle Structure Beneath the Eastern Mediterranean: Interpretation of New Seismic Tomography, Magnetic Field, and Paleobiogeographic Data

L. V. Eppelbaum Yu. I. Katz Z. Ben-Avraham

OriginalPaper | 22 July 2025 | Pages: 101 - 126



Evolution, Geodynamics, and Morphology of Lenticular Extension Zones of Transform Faults: Comparative Analysis and Kinematic Model

K. O. Dobrolyubova

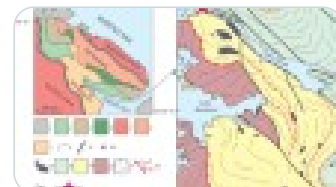
OriginalPaper | 22 July 2025 | Pages: 127 - 145



Structural Signes of Brittle-Ductile Transitions during Exhumation of Basement Rocks of the Southwestern Foreland of the Paleoproterozoic Lapland–Cola Collision Orogen (Belomorian Province, Lyagkomina Dam Site): Analogue Model of Deformation Stages

I. I. Babarina N. S. Serebryakov

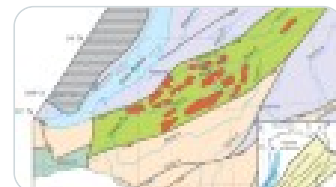
OriginalPaper | 22 July 2025 | Pages: 146 - 157



Transverse Structural Zoning of the Lower Cambrian Uda–Vitim Island-Arc System (Western Transbaikalia, Russia)

V. S. Lantseval V. Gordienko O. R. Minina

OriginalPaper | 22 July 2025 | Pages: 158 - 175



Structure and Petrological-Geochemical Characteristics of Rocks of the Kabak-Taiga Ophiolite Complex of the Altai-Sayan Folded Region (Mountain Altai)

V. D. Zindobryi M. M. Buslov A. V. Kotlyarov

OriginalPaper | 22 July 2025 | Pages: 176 - 197

