

IEEE

SIGNAL PROCESSING LETTERS

A PUBLICATION OF THE IEEE SIGNAL PROCESSING SOCIETY



www.ieee.org/sp/index.html

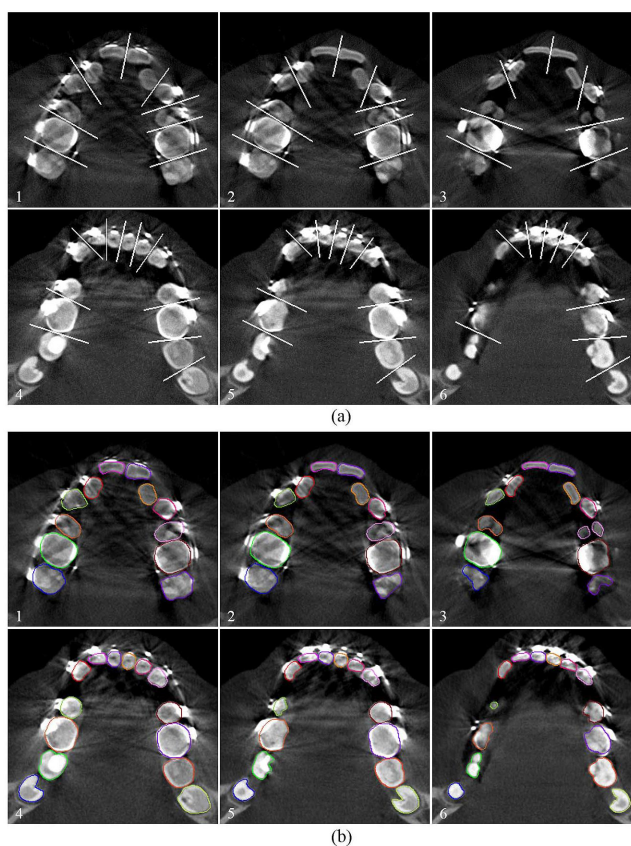
APRIL 2016
MAY 2016
JUNE 2016

VOLUME 23
VOLUME 23
VOLUME 23

NUMBER 4
NUMBER 5
NUMBER 6

ISPLEM

(ISSN 1070-9908)



Crown segmentation results on sample slices using the proposed method. (a) Neighboring crown separation line extraction results. (b) Crown contour segmentation results. The white lines denote the extracted separation line of neighboring crowns, and colored curves denote the segmented crown contours. For more, see "Crown Segmentation From Computed Tomography Images With Metal Artifacts," by Xia, *et al.*, p. 678.

For the April 2016 issue, see p. 405 for Table of Contents.
For the May 2016 issue, see p. 561 for Table of Contents.
For the June 2016 issue, see p. 767 for Table of Contents.

IEEE

SIGNAL PROCESSING LETTERS

A PUBLICATION OF THE IEEE SIGNAL PROCESSING SOCIETY



www.ieee.org/sp/index.html

MAY 2016

VOLUME 23

NUMBER 5

ISPLEM

(ISSN 1070-9908)

LETTERS

| | | |
|---|---|-----|
| Reduced-Rank DOA Estimation Algorithms Based on Alternating Low-Rank Decomposition | <i>L. Qiu, Y. Cai, R. C. de Lamare, and M. Zhao</i> | 565 |
| On Fast Bilateral Filtering Using Fourier Kernels | <i>S. Ghosh and K. N. Chaudhury</i> | 570 |
| The Marginal Bayesian Cramér–Rao Bound for Jump Markov Systems | <i>C. Fritsche and F. Gustafsson</i> | 575 |
| Semiblind Interference Alignment: A New Framework | <i>K. Anand, E. Gunawan, and Y. L. Guan</i> | 580 |
| Cross-Corpus Speech Emotion Recognition Based on Domain-Adaptive Least-Squares Regression | <i>Y. Zong, W. Zheng, T. Zhang, and X. Huang</i> | 585 |
| Audio Coding Using Overlap and Kernel Adaptation | <i>C. R. Helmrich and B. Edler</i> | 590 |
| Theoretical Limitations of Allan Variance-based Regression for Time Series Model Estimation | <i>S. Guerrier, R. Molinari, and Y. Stebler</i> | 597 |
| A New Approach on Design of a Digital Phase-Locked Loop | <i>C. K. Ahn, P. Shi, and S. H. You</i> | 600 |
| Accurate Facial Landmark Extraction | <i>J.-M. Guo, S.-H. Tseng, and K. S. Wong</i> | 605 |
| Dispersion Entropy: A Measure for Time-Series Analysis | <i>M. Rostaghi and H. Azami</i> | 610 |
| Extension of Co-Prime Arrays Based on the Fourth-Order Difference Co-Array Concept | <i>Q. Shen, W. Liu, W. Cui, and S. Wu</i> | 615 |
| Performance Analysis of Differential Modulation in SWIPT Cooperative Networks | <i>L. Mohjazi, S. Muhaidat, and M. Dianati</i> | 620 |
| Siegel Descriptors for Image Processing | <i>R. Lenz</i> | 625 |

(Contents Continued on Page 562)

IEEE SIGNAL PROCESSING LETTERS (ISSN 1070-9908) is published quarterly in print and monthly online by the Institute of Electrical and Electronics Engineers, Inc. Responsibility for the contents rests upon the authors and not upon the IEEE, the Society/Council, or its members. **IEEE Corporate Office:** 3 Park Avenue, 17th Floor, New York, NY 10016-5997. **IEEE Operations Center:** 445 Hoes Lane, Piscataway, NJ 08854-4141. **NJ Telephone:** +1 732 981 0060. **Price/Publication Information:** Individual copies: IEEE Members \$20.00 (first copy only), nonmembers \$340.00 per copy. (Note: Postage and handling charge not included.) Member and nonmember subscription prices available upon request. Available in microfiche and microfilm. **Copyright and Reprint Permissions:** Abstracting is permitted with credit to the source. Libraries are permitted to photocopy for private use of patrons, provided the per-copy fee indicated in the code at the bottom of the first page is paid through the Copyright Clearance Center, 222 Rosewood Drive, Danvers, MA 01923. For all other copying, reprint, or republication permission, write to Copyrights and Permissions Department, IEEE Publications Administration, 445 Hoes Lane, Piscataway, NJ 08854-4141. Copyright © 2016 by the Institute of Electrical and Electronics Engineers, Inc. All rights reserved. **Postmaster:** Send address changes to IEEE SIGNAL PROCESSING LETTERS, IEEE, 445 Hoes Lane, Piscataway, NJ 08854-4141. GST Registration No. 125634188. CPC Sales Agreement #40013087. Return undeliverable Canada addresses to: Pitney Bowes IMEX, P.O. Box 4332, Stanton Rd., Toronto, ON M5W 3J4, Canada. IEEE prohibits discrimination, harassment and bullying. For more information visit <http://www.ieee.org/nondiscrimination>. Printed in U.S.A.

| | | |
|--|---|-----|
| Design of Massive-MIMO-NOMA With Limited Feedback | <i>Z. Ding and H. V. Poor</i> | 629 |
| Background Subtraction Using Illumination-Invariant Structural Complexity | <i>W. Kim and Y. Kim</i> | 634 |
| Sparse Code Multiple Access Decoding Based on a Monte Carlo Markov Chain Method | <i>J. Chen, Z. Zhang, S. He, J. Hu, and G. E. Sobelman</i> | 639 |
| Characteristic Functions of the Product of Two Gaussian Random Variables and the Product of a Gaussian and a Gamma Random Variable | <i>S. Schoenecker and T. Luginbuhl</i> | 644 |
| Decoding Method Based on Complex ICA for a Multicell Massive MIMO Uplink System | <i>Y. Liu, H. Wang, W. Zhang, Q. Xu, and L. Shen</i> | 648 |
| Solution of a Bivariate ℓ_1 Regularized Problem | <i>İ. Bayram</i> | 653 |
| Exploiting Spatial Structure from Parts for Adaptive Kernelized Correlation Filter Tracker | <i>R. Yao, S. Xia, F. Shen, Y. Zhou, and Q. Niu</i> | 658 |
| Non-Negative Temporal Decomposition Regularization With an Augmented Lagrangian | <i>M. A. Ramírez</i> | 663 |
| An Alternative Complexity Reduction Method for Partitioned-Block Frequency-Domain Adaptive Filters | <i>M. L. Valero, E. Mabande, and E. A. P. Habets</i> | 668 |
| Underdetermined Joint Blind Source Separation for Two Datasets Based on Tensor Decomposition | <i>L. Zou, X. Chen, and Z. J. Wang</i> | 673 |
| Crown Segmentation From Computed Tomography Images With Metal Artifacts | <i>Z. Xia, Y. Gan, J. Xiong, Q. Zhao, and J. Chen</i> | 678 |
| Saliency Detection With Spaces of Background-Based Distribution | <i>T. Zhao, L. Li, X. Ding, Y. Huang, and D. Zeng</i> | 683 |
| Audio Postprocessing Detection Based on Amplitude Cooccurrence Vector Feature | <i>D. Luo, M. Sun, and J. Huang</i> | 688 |
| Sensor Pattern Noise Estimation Using Probabilistically Estimated RAW Values | <i>A. Mehrish, A. V. Subramanyam, and S. Emmanuel</i> | 693 |
| Progressive Lossy-to-Lossless Compression of DNA Microarray Images | <i>M. Hernández-Cabronero, I. Blanes, A. J. Pinho, M. W. Marcellin, and J. Serra-Sagristà</i> | 698 |
| Saddlepoint Approximations for Correlation Testing Among Multiple Gaussian Random Vectors | <i>N. Klausner, M. R. Azimi-Sadjadi, and L. L. Scharf</i> | 703 |
| Structural Design of Convolutional Neural Networks for Steganalysis | <i>G. Xu, H.-Z. Wu, and Y.-Q. Shi</i> | 708 |
| Exploiting Power Signatures for Camera Forensics | <i>A. Hajj-Ahmad, A. Berkovich, and M. Wu</i> | 713 |
| The Constrained Misspecified Cramér–Rao Bound | <i>S. Fortunati, F. Gini, and M. S. Greco</i> | 718 |
| Steady-State Behavior of General Complex-Valued Diffusion LMS Strategies | <i>S. Kanna and D. P. Mandic</i> | 722 |
| Object Tracking With Spatial Context Model | <i>J. Sun, S. Zhang, and L. Zhang</i> | 727 |
| A Note on Compressed Sensing of Structured Sparse Wavelet Coefficients From Subsampled Fourier Measurements ... | <i>B. Adcock, A. C. Hansen, and B. Roman</i> | 732 |
| Analysis of Target Localization With Ideal Binary Detectors via Likelihood Function Smoothing | <i>A. Shoari, G. Mateos, and A. Seyedi</i> | 737 |
| Probabilistic Analysis of Semidefinite Relaxation for Leakage-Based Multicasting | <i>S. Schwarz</i> | 742 |
| Learning Optimal Nonlinearities for Iterative Thresholding Algorithms | <i>U. S. Kamilov and H. Mansour</i> | 747 |
| RLS Adaptive Filter With Inequality Constraints | <i>V. H. Nascimento and Y. V. Zakharov</i> | 752 |
| A WD-RANSAC Instantaneous Frequency Estimator | <i>I. Djurović</i> | 757 |
| A Novel Data-Driven Learning Method for Radar Target Detection in Nonstationary Environments | <i>M. Akcakaya, S. Sen, and A. Nehorai</i> | 762 |
