

IEEE

# SIGNAL PROCESSING LETTERS

A PUBLICATION OF THE IEEE SIGNAL PROCESSING SOCIETY



[www.ieee.org/sp/index.html](http://www.ieee.org/sp/index.html)

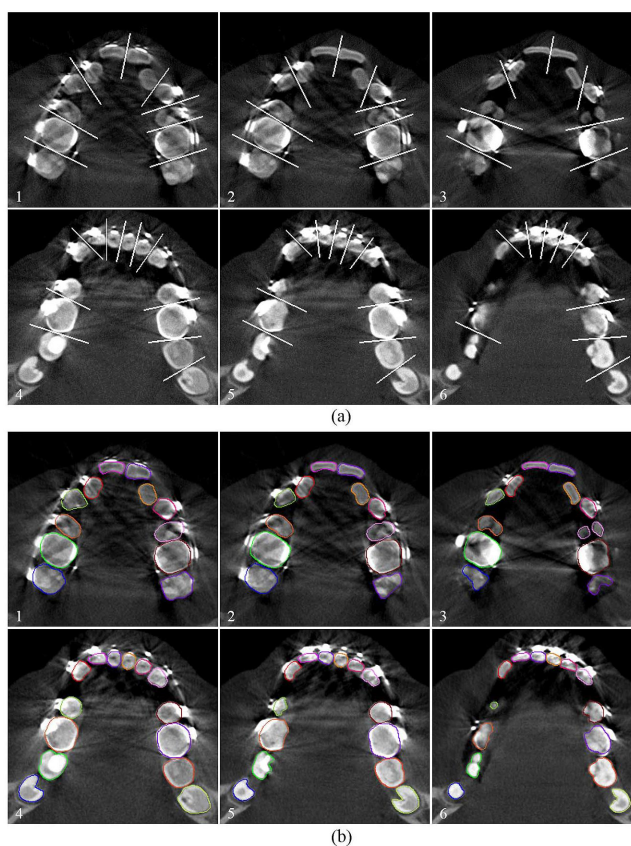
APRIL 2016  
MAY 2016  
JUNE 2016

VOLUME 23  
VOLUME 23  
VOLUME 23

NUMBER 4  
NUMBER 5  
NUMBER 6

ISPLEM

(ISSN 1070-9908)



Crown segmentation results on sample slices using the proposed method. (a) Neighboring crown separation line extraction results. (b) Crown contour segmentation results. The white lines denote the extracted separation line of neighboring crowns, and colored curves denote the segmented crown contours. For more, see "Crown Segmentation From Computed Tomography Images With Metal Artifacts," by Xia, *et al.*, p. 678.

---

For the April 2016 issue, see p. 405 for Table of Contents.  
For the May 2016 issue, see p. 561 for Table of Contents.  
For the June 2016 issue, see p. 767 for Table of Contents.

---

IEEE

# SIGNAL PROCESSING LETTERS

A PUBLICATION OF THE IEEE SIGNAL PROCESSING SOCIETY



[www.ieee.org/sp/index.html](http://www.ieee.org/sp/index.html)

JUNE 2016

VOLUME 23

NUMBER 6

ISPLEM

(ISSN 1070-9908)

---

LETTERS

Visual Face Recognition Using Bag of Dense Derivative Depth Patterns .....	771
..... <i>T. Mantecón, C. R. del-Blanco, F. Jaureguizar, and N. García</i>	
Fast Frequency Estimation Algorithm by Least Squares Phase Unwrapping .....	776
..... <i>Z. Xu, T. Lu, and B. Huang</i>	
A Subband-Based Stationary-Component Suppression Method Using Harmonics and Power Ratio for Reverberant Speech Recognition .....	780
..... <i>B. J. Cho, H. Kwon, J.-W. Cho, C. Kim, R. M. Stern, and H.-M. Park</i>	
Multivideo Object Cosegmentation for Irrelevant Frames Involved Videos .....	785
..... <i>J. Zhang, K. Li, and W. Tao</i>	
Maximum-Likelihood Blind Synchronization for GFDM Systems .....	790
..... <i>P.-S. Wang and D. W. Lin</i>	
Semisupervised Multilabel Learning With Joint Dimensionality Reduction .....	795
..... <i>T. Yu and W. Zhang</i>	
1-D Filter for Ring Artifact Suppression .....	800
..... <i>V. Titarenko</i>	
ECG Authentication System Design Based on Signal Analysis in Mobile and Wearable Devices .....	805
..... <i>S. J. Kang, S. Y. Lee, H. I. Cho, and H. Park</i>	
Bias-Compensated Normalized Subband Adaptive Filter Algorithm .....	809
..... <i>Z. Zheng and H. Zhao</i>	
Pseudo-Pilot: A Novel Paradigm of Channel Estimation .....	814
..... <i>Y. Ma</i>	
Saliency Detection for Stereoscopic Images Based on Depth Confidence Analysis and Multiple Cues Fusion .....	819
..... <i>R. Cong, J. Lei, C. Zhang, Q. Huang, X. Cao, and C. Hou</i>	
Improving the Goertzel–Blahut Algorithm .....	824
..... <i>S. V. Fedorenko</i>	
Cooperative Localization for Mobile Networks: A Distributed Belief Propagation – Mean Field Message Passing Algorithm .....	828
..... <i>B. Çakmak, D. N. Urup, F. Meyer, T. Pedersen, B. H. Fleury, and F. Hlawatsch</i>	

(Contents Continued on Page 768)

IEEE SIGNAL PROCESSING LETTERS (ISSN 1070-9908) is published quarterly in print and monthly online by the Institute of Electrical and Electronics Engineers, Inc. Responsibility for the contents rests upon the authors and not upon the IEEE, the Society/Council, or its members. **IEEE Corporate Office:** 3 Park Avenue, 17th Floor, New York, NY 10016-5997. **IEEE Operations Center:** 445 Hoes Lane, Piscataway, NJ 08854-4141. **NJ Telephone:** +1 732 981 0060. **Price/Publication Information:** Individual copies: IEEE Members \$20.00 (first copy only), nonmembers \$340.00 per copy. (Note: Postage and handling charge not included.) Member and nonmember subscription prices available upon request. Available in microfiche and microfilm. **Copyright and Reprint Permissions:** Abstracting is permitted with credit to the source. Libraries are permitted to photocopy for private use of patrons, provided the per-copy fee indicated in the code at the bottom of the first page is paid through the Copyright Clearance Center, 222 Rosewood Drive, Danvers, MA 01923. For all other copying, reprint, or republication permission, write to Copyrights and Permissions Department, IEEE Publications Administration, 445 Hoes Lane, Piscataway, NJ 08854-4141. Copyright © 2016 by the Institute of Electrical and Electronics Engineers, Inc. All rights reserved. **Postmaster:** Send address changes to IEEE SIGNAL PROCESSING LETTERS, IEEE, 445 Hoes Lane, Piscataway, NJ 08854-4141. GST Registration No. 125634188. CPC Sales Agreement #40013087. Return undeliverable Canada addresses to: Pitney Bowes IMEX, P.O. Box 4332, Stanton Rd., Toronto, ON M5W 3J4, Canada. IEEE prohibits discrimination, harassment and bullying. For more information visit <http://www.ieee.org/nondiscrimination>. Printed in U.S.A.

---

Rotation Invariant Texture Description Using Symmetric Dense Microblock Difference . . .	<i>R. Mehta and K. Egiazarian</i>	833
Saliency Detection Via Similar Image Retrieval . . . . .	<i>L. Ye, Z. Liu, X. Zhou, L. Shen, and J. Zhang</i>	838
Generalized Brillinger-Like Transforms . . . . .	<i>A. Torokhti and P. Soto-Quiros</i>	843
New Results on Generalized Fractional Programming Problems With Toeplitz Quadratics . . . . .	<i>A. Aubry, V. Carotenuto, and A. D. Maio</i>	848
Image Dehazing Using Quadtree Decomposition and Entropy-Based Contextual Regularization . . . . .	<i>N. Baig, M. M. Riaz, A. Ghafoor, and A. M. Siddiqui</i>	853
Geometric-Algebra LMS Adaptive Filter and Its Application to Rotation Estimation . . . . .	<i>W. B. Lopes, A. Al-Nuaimi, and C. G. Lopes</i>	858
Scalable Multisensor Multitarget Tracking Using the Marginalized $\delta$ -GLMB Density . . . . .	<i>C. Fantacci and F. Papi</i>	863
Efficient Demodulation of General APSK Constellations . . . . .	<i>M. Sandell, F. Tosato, and A. Ismail</i>	868
Statistical Performance Analysis of the Adaptive Orthogonal Rejection Detector . . . . .	<i>W. Liu, J. Liu, X. Hu, Z. Tang, L. Huang, and Y.-L. Wang</i>	873
An Inner-Product Calculus for Periodic Functions and Curves . . . . .	<i>A. Badoual, D. Schmitter, and M. Unser</i>	878
Transceiver Design to Maximize the Weighted Sum Secrecy Rate in Full-Duplex SWIPT Systems . . . . .	<i>Y. Wang, R. Sun, and X. Wang</i>	883
Adaptive Part-Level Model Knowledge Transfer for Gender Classification . . . . .	<i>Y. Gao, Z. Li, and Y. Qiao</i>	888
Robust Cross-view Hashing for Multimedia Retrieval . . . . .	<i>X. Shen, F. Shen, Q.-S. Sun, Y.-H. Yuan, and H. T. Shen</i>	893
<hr/>		
EDICS—Editors’ Information Classification Scheme . . . . .		898
Information for Authors . . . . .		899

---