

**BRIDGING THE
DIGITAL DIVIDE**
Learning to love
"Super Wi-Fi"
P. 09

**THE BLOCKCHAIN,
UNCHAINED**
Be afraid.
Be very afraid.
P. 12

**FUEL-CELL
FLYER**
How electric planes
can compete *now*
P. 44

**WHEN ONLY
MULES WILL DO**
NASA's unsung
beasts of burden
P. 50



**IEEE
SPECTRUM**

FOR THE TECHNOLOGY INSIDER | 06.16

CAN WE TRUST ROBOTS?

They'll soon
be driving us,
operating on
us, and deciding
who lives and
who dies on
battlefields

**A Special
Report**

SPECIAL REPORT

26 CAN WE TRUST ROBOTS?

Robots will soon be doing duty as drivers, surgeons, and soldiers. Are they ready? Are we?

28 Can You Program Ethics Into a Self-Driving Car?

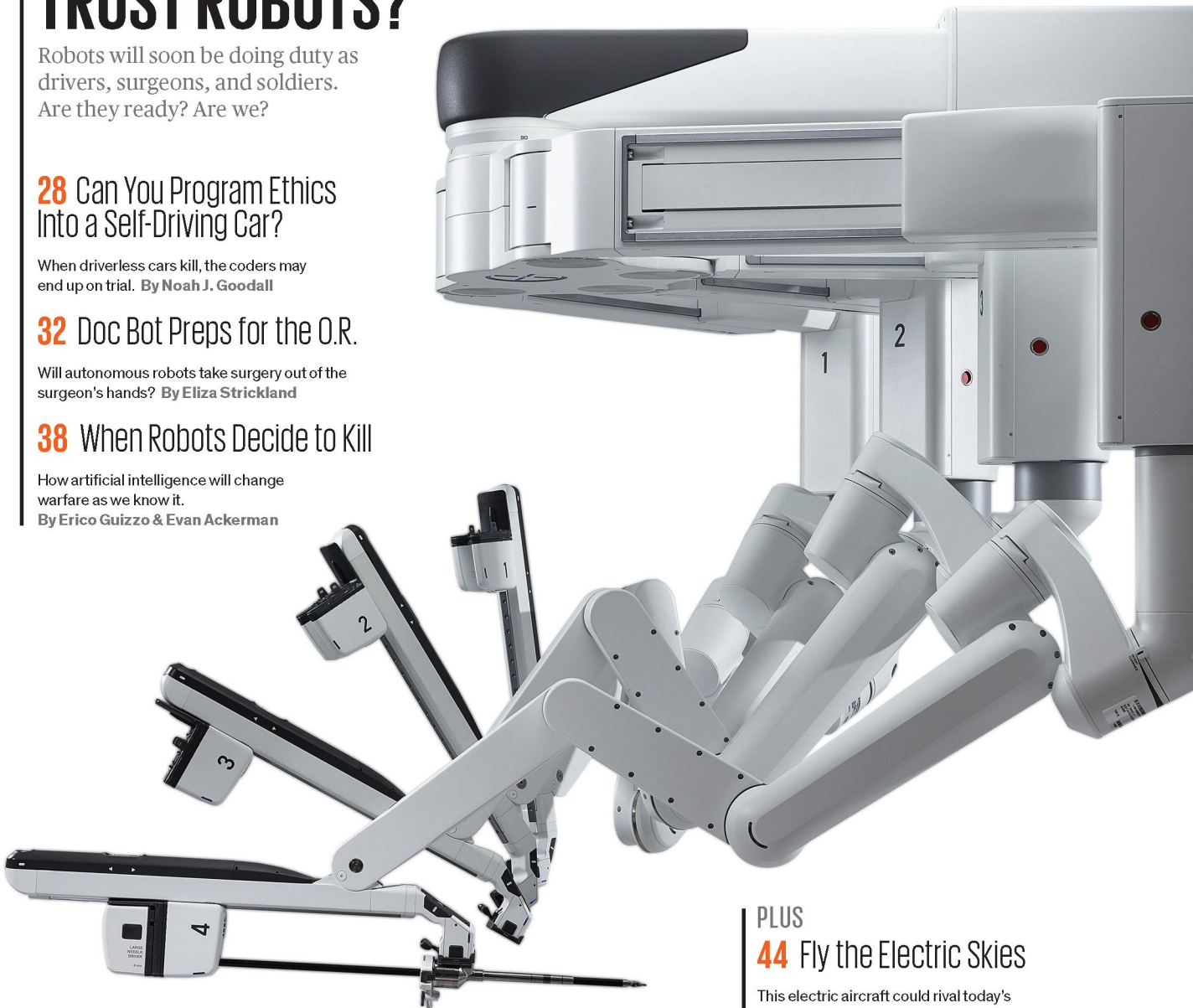
When driverless cars kill, the coders may end up on trial. **By Noah J. Goodall**

32 Doc Bot Preps for the O.R.

Will autonomous robots take surgery out of the surgeon's hands? **By Eliza Strickland**

38 When Robots Decide to Kill

How artificial intelligence will change warfare as we know it. **By Erico Guizzo & Evan Ackerman**



PLUS

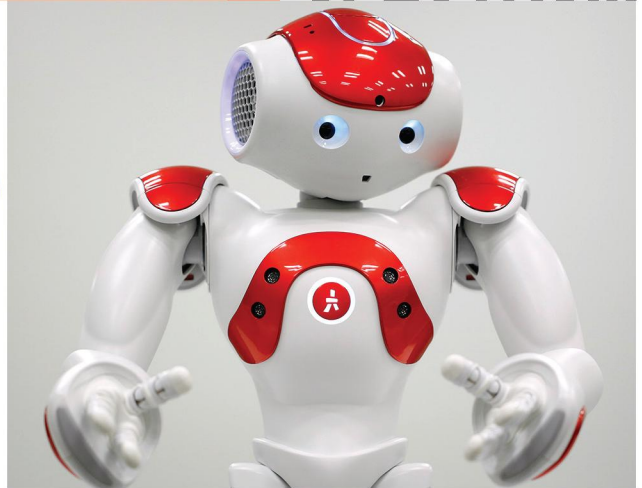
44 Fly the Electric Skies

This electric aircraft could rival today's single-engine planes. **By Tom Neuman**

50 Mules on a Mountain

How a NASA project will improve weather forecasts and climate models. **By Mark Harris**

On the cover Illustration for IEEE Spectrum by Carl De Torres



09

News

Three Ways to Bridge the Digital Divide

It's not all technical wizardry.
By Amy Nordrum

- 11 The Grid's Strained Ties to Gas
- 12 The Blockchain's Dark Side
- 14 EEG as a Biometric ID

17

Resources

8-mm Digital

Vintage optics with a modern camera module re-create a classic, home-movie feel. By Claire Wright

- 19 Startups: Nervana Systems Sells Deep-Learning Expertise
- 20 Geek Life: Keeping Classic Computers Running
- 21 Tools and Toys: Microsoft's HoloLens Development Edition
- 64 Past Forward: The Inflatable Invisibility Suit

08

Opinion

Building Robots We Can Trust

What does it mean to trust a robot?
By Susan Hassler

- 04 Back Story
- 06 Contributors
- 22 Numbers Don't Lie: Wringing More Efficiency From Home Heating
- 24 Technically Speaking: Information Overload Meets Disposability

Online

Spectrum.ieee.org

Video: Can We Build Ethical Robots?

Robots are everywhere—in our cars, our homes, and our hospitals. And as artificial intelligence progresses, it's likely that robots will have to make decisions about human lives—who gets saved in an emergency, and who doesn't. But can we trust robots to solve ethical dilemmas? Watch <http://spectrum.ieee.org/robotethics0616>

ADDITIONAL RESOURCES

Tech Insider / Webinars

Available at spectrum.ieee.org/webinar

- ▶ **Vision With Precision Webinar Series: Xilinx Embedded Vision Solutions for Machine Vision Applications**—8 June
- ▶ **Enhancing High-Voltage Transmission Line Performance With Numerical Simulation**—9 June
- ▶ **The Future of Systems Modeling: Exploring SysML Today and Tomorrow**—On Demand
- ▶ **How Far Can Your Math Knowledge Go?**—On Demand
- ▶ **ANSYS ENGINEERING SIMULATION RESOURCE LIBRARY**
<http://spectrum.ieee.org/static/ansys-engineering-simulation-resource-library>
- ▶ **NEW PRODUCT RELEASE LIBRARY**
<http://spectrum.ieee.org/static/new-product-release-library>

The Institute

Available at theinstitute.ieee.org

- ▶ **ARTIFICIAL INTELLIGENCE** In this special report, *The Institute* covers one of the latest AI developments: deep learning, which involves neural networks that teach themselves and make decisions on their own. This issue includes a Q&A with an IEEE Fellow about his work in deep learning and highlights several AI applications already in place. We also provide tips for breaking into this growing field.
- ▶ **MEET THE CANDIDATES** To help you choose the 2017 IEEE president-elect, there's an interview with the two candidates: Life Senior Member Jim Jefferies and Fellow Wanda Reder.
- ▶ **STARTUP STAR** Member Ryan Gariepy launched Clearpath with three other students while pursuing a bachelor's degree. The company, which builds self-driving warehouse vehicles, now has revenues in the millions.

IEEE SPECTRUM

(ISSN 0018-9235) is published monthly by The Institute of Electrical and Electronics Engineers, Inc. All rights reserved. © 2016 by The Institute of Electrical and Electronics Engineers, Inc., 3 Park Avenue, New York, NY 10016-5997, U.S.A. Volume No. 53, Issue No. 6, North American edition. The editorial content of IEEE Spectrum magazine does not represent official positions of the IEEE or its organizational units. Canadian Post International Publications Mail (Canadian Distribution) Sales Agreement No. 40013087. Return undeliverable Canadian addresses to: Circulation Department, IEEE Spectrum, Box 1051, Fort Erie, ON L2A 6C7. Cable address: ITRIPLEE. Fax: +1 212 419 7570. INTERNET: spectrum@ieee.org. ANNUAL SUBSCRIPTIONS: IEEE Members: \$21.40 included in dues. Libraries/institutions: \$399. POSTMASTER: Please send address changes to IEEE Spectrum, c/o Coding Department, IEEE Service Center, 445 Hoes Lane, Box 1331, Piscataway, NJ 08855. Periodicals postage paid at New York, NY, and additional mailing offices. Canadian GST #125634188. Printed at 120 Donnelley Dr., Glasgow, KY 42141-1060, U.S.A. IEEE Spectrum circulation is audited by BPA Worldwide. IEEE Spectrum is a member of the Association of Business Information & Media Companies, the Association of Magazine Media, and Association Media & Publishing. IEEE prohibits discrimination, harassment, and bullying. For more information, visit <http://www.ieee.org/web/aboutus/whatis/policies/p9-26.html>.