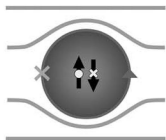


IEEE TRANSACTIONS ON **APPLIED SUPERCONDUCTIVITY**

A PUBLICATION OF THE IEEE COUNCIL ON SUPERCONDUCTIVITY



JANUARY 2016

VOLUME 26

NUMBER 1

ITASE9

(ISSN 1051-8223)

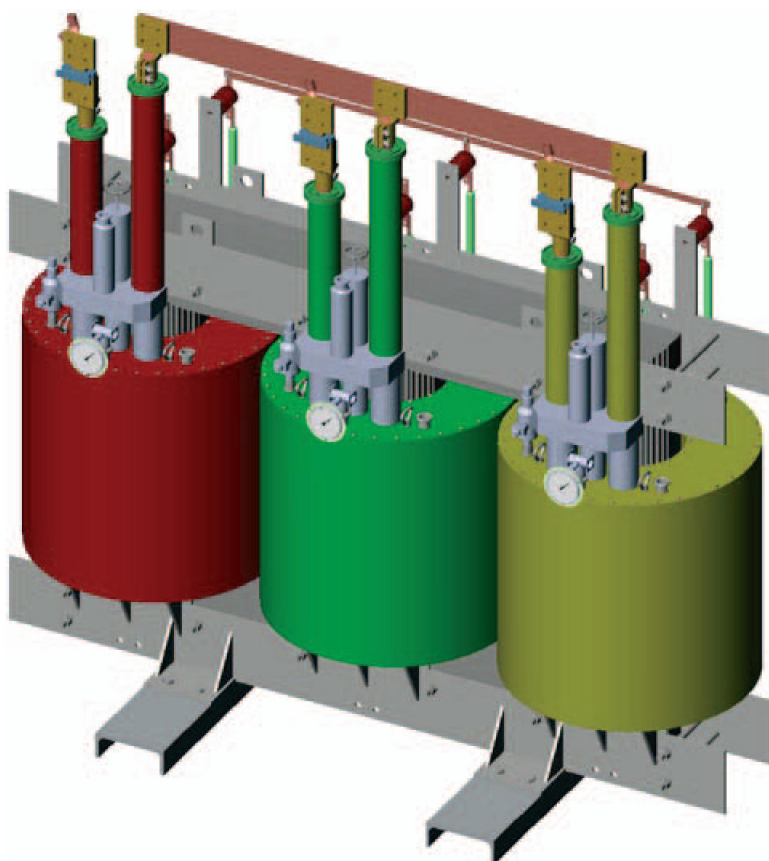
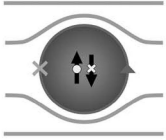


Figure 1 from “Development of a 1250-kVA Superconducting Transformer and Its Demonstration at the Superconducting Substation,” by Dai *et al.*, 5500107.

IEEE TRANSACTIONS ON APPLIED SUPERCONDUCTIVITY

A PUBLICATION OF THE IEEE COUNCIL ON SUPERCONDUCTIVITY



JANUARY 2016

VOLUME 26

NUMBER 1

ITASE9

(ISSN 1051-8223)

PAPERS

Digital Circuits

4-bit Bit-Slice Arithmetic Logic Unit for 32-bit RSFQ Microprocessors
. *G. Tang, K. Takata, M. Tanaka, A. Fujimaki, K. Takagi, and N. Takagi* 1300106

Levitation, Transportation, and Propulsion

Study on the Magnetic Field Inhomogeneity of a Halbach Permanent-Magnet Guideway Due to Different Defects
. *R. Sun, J. Zheng, B. Zheng, L. Zhan, S. Huang, T. Lu, Z. Wang, and Z. Deng* 3600107

Very High Field and NMR Magnets (Solenoids, Inserts, Hybrid)

Analysis of Damage by Quench and Improvements in Rewinding for a 9.4-T Superconducting NMR Magnet
. *Y. Li, Q. Wang, S. Song, Y. Lei, J. Cheng, S. Chen, B. Zhao, Y. Dai, Z. Ni, and X. Hu* 4300105

Transformers

Development of a 1250-kVA Superconducting Transformer and Its Demonstration at the Superconducting Substation
. *S. Dai, T. Ma, Q. Qiu, Z. Zhu, Y. Teng, and L. Hu* 5500107

Fault-Current Limiters

Simulations of the Recovery Process of an Air-Coil SFCL
. *W. T. B. de Sousa, F. N. F. Dicler, and F. G. R. Martins* 5600106

Conceptual Design and Evaluation of a Resistive-Type SFCL for Efficient Fault Ride Through in a DFIG . . .
. *Z.-C. Zou, X.-Y. Chen, C.-S. Li, X.-Y. Xiao, and Y. Zhang* 5600209

SHORT PAPERS

MgB₂ Wires and Tapes

Self-Field Losses in Superconducting MgB₂ Composite *N. V. Deniskina and F. I. Getman* 6200103
