

# IEEE TRANSACTIONS ON SIGNAL PROCESSING

A PUBLICATION OF THE IEEE SIGNAL PROCESSING SOCIETY



[www.signalprocessingsociety.org](http://www.signalprocessingsociety.org)

Indexed in PubMed® and MEDLINE®, products of the United States National Library of Medicine



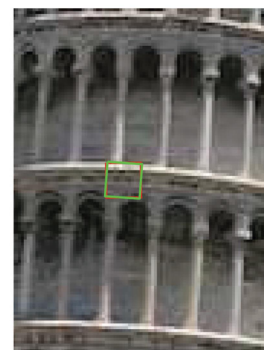
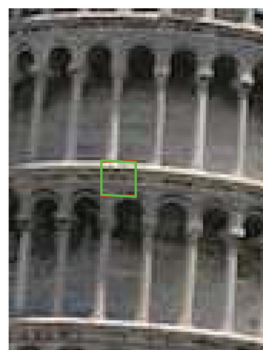
SEPTEMBER 1, 2016  
SEPTEMBER 15, 2016  
OCTOBER 1, 2016  
OCTOBER 15, 2016

VOLUME 64  
VOLUME 64  
VOLUME 64  
VOLUME 64

NUMBER 17  
NUMBER 18  
NUMBER 19  
NUMBER 20

ITPRED

(ISSN 1053-587X)



(a)

(b)

(c)

(d)

---

For the September 1, 2016 issue, see p. 4385 for Table of Contents  
For the September 15, 2016 issue, see p. 4645 for Table of Contents  
For the October 1, 2016 issue, see p. 4918 for Table of Contents  
For the October 15, 2016 issue, see p. 5187 for Table of Contents

---



# IEEE TRANSACTIONS ON SIGNAL PROCESSING

A PUBLICATION OF THE IEEE SIGNAL PROCESSING SOCIETY



[www.signalprocessingsociety.org](http://www.signalprocessingsociety.org)

Indexed in PubMed® and MEDLINE®, products of the United States National Library of Medicine



OCTOBER 15, 2016

VOLUME 64

NUMBER 20

ITPRED

(ISSN 1053-587X)

REGULAR PAPERS

Sensor Selection for Target Tracking in Wireless Sensor Networks With Uncertainty .....	
..... N. Cao, S. Choi, E. Masazade, and P. K. Varshney	5191
Selecting Wavelengths for Least Squares Range Estimation . . . . A. Akhlaq, R. McKilliam, R. Subramanian, and A. Pollok	5205
A Unified Theory of Union of Subspaces Representations for Period Estimation. . . . S. V. Tenneti and P. P. Vaidyanathan	5217
New Results on Transceiver Design for Two-Hop Amplify-and-Forward MIMO Relay Systems With Direct Link .....	
..... Z. He, J. Zhang, W. Liu, and Y. Rong	5232

(Contents Continued on Page 5188)

IEEE TRANSACTIONS ON SIGNAL PROCESSING (ISSN 1053-587X) is published semimonthly by the Institute of Electrical and Electronics Engineers, Inc. Responsibility for the contents rests upon the authors and not upon the IEEE, the Society/Council, or its members. **IEEE Corporate Office:** 3 Park Avenue, 17th Floor, New York, NY 10016-5997. **IEEE Operations Center:** 445 Hoes Lane, Piscataway, NJ 08854-4141. **NJ Telephone:** +1 732 981 0060. **Price/Publication Information:** Individual copies: IEEE Members \$39.00 (first copy only), nonmembers \$663.00 per copy. (Note: Postage and handling charge not included.) Member and nonmember subscription prices available upon request. **Copyright and Reprint Permissions:** Abstracting is permitted with credit to the source. Libraries are permitted to photocopy for private use of patrons, provided the per-copy fee of \$31.00 is paid through the Copyright Clearance Center, 222 Rosewood Drive, Danvers, MA 01923. For all other copying, reprint, or republication permission, write to Copyrights and Permissions Department, IEEE Publications Administration, 445 Hoes Lane, Piscataway, NJ 08854-4141. Copyright © 2016 by the Institute of Electrical and Electronics Engineers, Inc. All rights reserved. **Postmaster:** Send address changes to IEEE TRANSACTIONS ON SIGNAL PROCESSING, IEEE, 445 Hoes Lane, Piscataway, NJ 08854-4141. GST Registration No. 125634188. CPC Sales Agreement #40013087. Return undeliverable Canada addresses to: Pitney Bowes IMEX, P.O. Box 4332, Stanton Rd., Toronto, ON M5W 3J4, Canada. IEEE prohibits discrimination, harassment and bullying. For more information visit <http://www.ieee.org/nondiscrimination>. Printed in U.S.A.



---

TDOA Matrices: Algebraic Properties and Their Application to Robust Denoising With Missing Data . . . . .	
..... <i>J. Velasco, D. Pizarro, J. Macias-Guarasa, and A. Asaei</i>	5242
Aliasing Reduction in Clipped Signals . . . . .	<i>F. Esqueda, S. Bilbao, and V. Välimäki</i> 5255
Estimation After Parameter Selection: Performance Analysis and Estimation Methods . . . . .	<i>T. Routtenberg and L. Tong</i> 5268
Phase Retrieval Using Feasible Point Pursuit: Algorithms and Cramér–Rao Bound . . . . .	
..... <i>C. Qian, N. D. Sidiropoulos, K. Huang, L. Huang, and H. Cheung So</i>	5282
Consensus-ADMM for General Quadratically Constrained Quadratic Programming . . . . .	<i>K. Huang and N. D. Sidiropoulos</i> 5297
Sequential Joint Detection and Estimation: Optimum Tests and Applications . . . . .	<i>Y. Yilmaz, S. Li, X. Wang</i> 5311
Relevance Singular Vector Machine for Low-Rank Matrix Reconstruction . . . . .	
..... <i>M. Sundin, C. R. Rojas, M. Jansson, and S. Chatterjee</i>	5327
Personalized Course Sequence Recommendations . . . . .	<i>J. Xu, T. Xing, and M. van der Schaar</i> 5340
Parametric Frugal Sensing for Autoregressive and Autoregressive Moving Average Power Spectra . . . . .	
..... <i>A. Konar and N. D. Sidiropoulos</i>	5353
Unimodular Sequence Design Based on Alternating Direction Method of Multipliers . . . . .	
..... <i>J. Liang, H. Cheung So, J. Li, and A. Farina</i>	5367
Wireless Power Transfer for Distributed Estimation in Wireless Passive Sensor Networks . . . . .	
..... <i>Y.-W. Peter Hong, T.-C. Hsu, and P. Chennakesavula</i>	5382
Parameter Estimation of Wideband Underwater Acoustic Multipath Channels based on Fractional Fourier Transform . . . . .	
..... <i>Y. Zhao, H. Yu, G. Wei, F. Ji, and F. Chen</i>	5396
A Variational Bayesian Multiple Particle Filtering Scheme for Large-Dimensional Systems . . . . .	
..... <i>B. Ait-El-Fquih and I. Hoteit</i>	5409
Smooth PARAFAC Decomposition for Tensor Completion . . . . .	<i>T. Yokota, Q. Zhao, and A. Cichocki</i> 5423
Constrained Adaptive Sensing . . . . .	<i>M. A. Davenport, A. K. Massimino, D. Needell, and T. Wolf</i> 5437
Sampling Streams of Pulses With Unknown Shapes . . . . .	<i>Y. Zhang and P. Luigi Dragotti</i> 5450

---

EDICS–Editors’ Information Classification Scheme . . . . .	5466
--	------

Information for Authors . . . . .	5467
-----------------------------------	------

---

About the Cover: The cover depicts the image rectification comparisons using a landmark photo as presented in Fig. 9 of the paper “Exploring Algorithmic Limits of Matrix Rank Minimization Under Affine Constraints” by Xin, Wang, Gao, and Wipf on page 4960. The top line shows the original image with observed region (red box) and estimated transformation (green box), while the bottom line shows the rectified image estimates: (a) nuclear norm (easy), (b) BARM (easy), (c) nuclear norm (hard), and (d) BARM (hard).

---