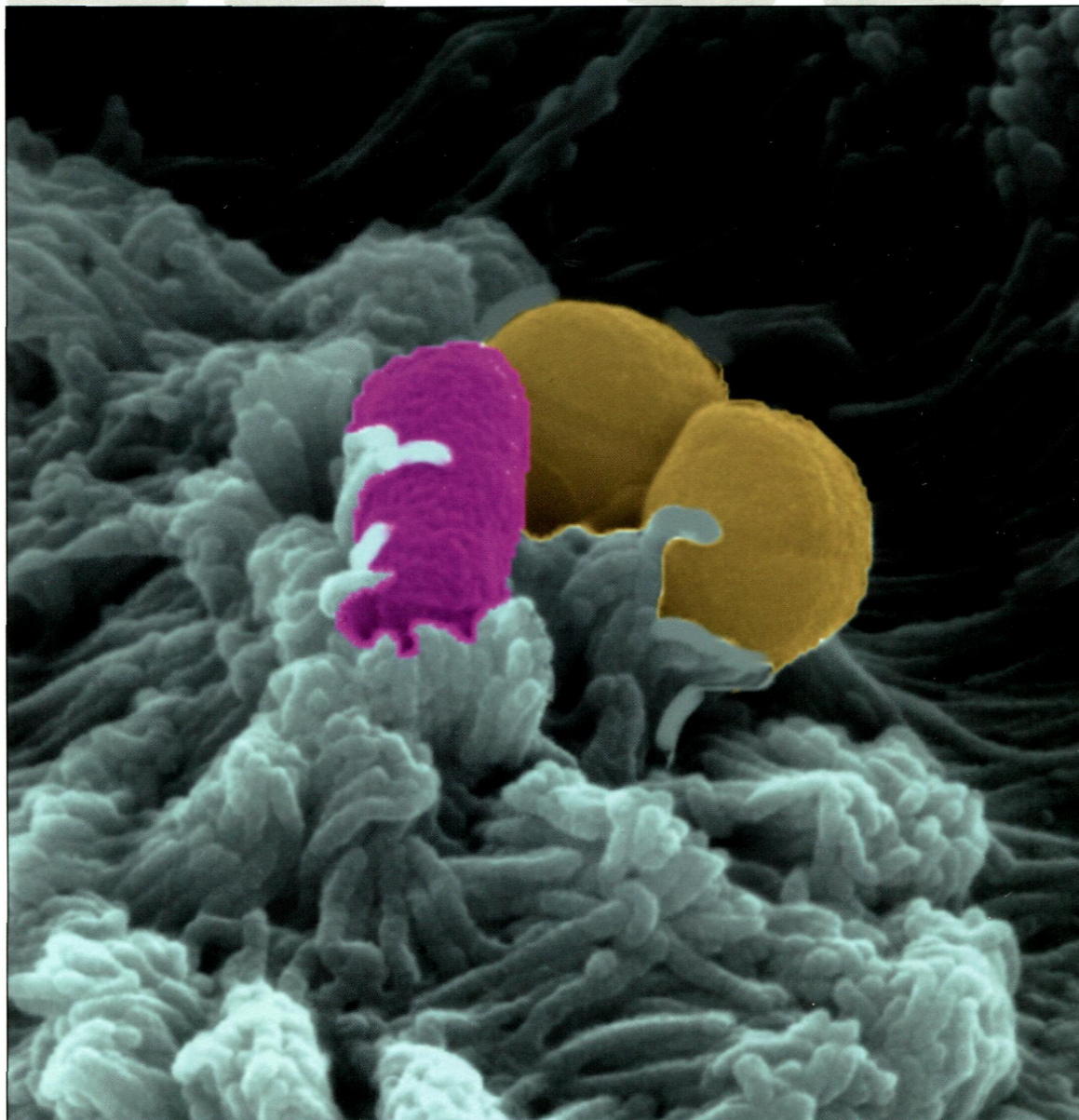


FM
1-60/i

IAI

INFECTION AND IMMUNITY

JULY 2014
VOLUME 82
NUMBER 7



published monthly by



AMERICAN
SOCIETY FOR
MICROBIOLOGY

TABLE OF CONTENTS

SPOTLIGHT

Articles of Significant Interest Selected from This Issue by the Editors 2669

MOLECULAR PATHOGENESIS

Identification of a Diguanylate Cyclase and Its Role in *Porphyromonas gingivalis* Virulence 2728–2735
Swarnava Chaudhuri, Siddharth Pratap, Victor Paromov, Zhijun Li, Chinmay K. Mantri, Hua Xie

The Type II Secretion Pathway in *Vibrio cholerae* Is Characterized by Growth Phase-Dependent Expression of Exoprotein Genes and Is Positively Regulated by σ^E 2788–2801
Ryszard A. Zielke, Ryan S. Simmons, Bo R. Park, Mariko Nonogaki, Sarah Emerson, Aleksandra E. Sikora

SpyAD, a Moonlighting Protein of Group A *Streptococcus* Contributing to Bacterial Division and Host Cell Adhesion 2890–2901
Marilena Gallotta, Giovanni Gancitano, Giampiero Pietrocola, Marirosa Mora, Alfredo Pezzicoli, Giovanna Tuscano, Emiliano Chiarot, Vincenzo Nardi-Dei, Anna Rita Taddei, Simonetta Rindi, Pietro Speciale, Marco Soriani, Guido Grandi, Immaculada Margarit, Giuliano Bensi

Origins of a 350-Kilobase Genomic Duplication in *Mycobacterium tuberculosis* and Its Impact on Virulence 2902–2912
Pilar Domenech, Anya Rog, Jalal-uddin Moolji, Nicolas Radomski, Ashley Fallow, Lizbel Leon-Solis, Julia Bowes, Marcel A. Behr, Michael B. Reed

Reciprocal Regulation of Resistance-Nodulation-Division Efflux Systems and the Cpx Two-Component System in *Vibrio cholerae* 2980–2991
Dawn L. Taylor, X. Renee Bina, Leyla Slamti, Matthew K. Waldor, James E. Bina

Bile Acids and Bicarbonate Inversely Regulate Intracellular Cyclic di-GMP in *Vibrio cholerae* 3002–3014
Benjamin J. Koestler, Christopher M. Waters

CELLULAR MICROBIOLOGY: PATHOGEN-HOST CELL MOLECULAR INTERACTIONS

ALOX12 in Human Toxoplasmosis 2670–2679
William H. Witola, Susan Ruusu Liu, Alexandre Montpetit, Ruth Welti, Magali Hypolite, Mary Roth, Ying Zhou, Ernest Mui, Marie-France Cesbron-Delauw, Gilbert J. Fournie, Pierre Cavailles, Cordelia Bisanz, Kenneth Boyer, Shawn Withers, A. Gwendolyn Noble, Charles N. Swisher, Peter T. Heydemann, Peter Rabiah, Stephen P. Muench, Rima McLeod

Clostridium difficile Toxin A Attenuates Wnt/ β -Catenin Signaling in Intestinal Epithelial Cells 2680–2687
Bruno Bezerra Lima, Bárbara Faria Fonseca, Nathália da Graça Amado, Débora Moreira Lima, Ronaldo Albuquerque Ribeiro, José Garcia Abreu, Gerly Anne de Castro Brito

Role of Intracellular Carbon Metabolism Pathways in *Shigella flexneri* Virulence 2746–2755
E. A. Waligora, C. R. Fisher, N. J. Hanovice, A. Rodou, E. E. Wyckoff, S. M. Payne

Antiapoptotic Activity of *Coxiella burnetii* Effector Protein AnkG Is Controlled by p32-Dependent Trafficking

Rita A. Eckart, Stephanie Bisle, Jan Schulze-Luehrmann, Irene Wittmann, Jonathan Jantsch, Benedikt Schmid, Christian Berens, Anja Lührmann 2763–2771

Cysteine Protease Activity of Feline *Tritrichomonas foetus* Promotes Adhesion-Dependent Cytotoxicity to Intestinal Epithelial Cells

M. K. Tolbert, S. H. Stauffer, M. D. Brand, J. L. Gookin 2851–2859

Epithelial Microvilli Establish an Electrostatic Barrier to Microbial Adhesion

Kaila M. Bennett, Sharon L. Walker, David D. Lo 2860–2871

The *Salmonella* Effector SteA Contributes to the Control of Membrane Dynamics of *Salmonella*-Containing Vacuoles

Lia Domingues, David W. Holden, Luis Jaime Mota 2923–2934

FTT0831c/FTL_0325 Contributes to *Francisella tularensis* Cell Division, Maintenance of Cell Shape, and Structural Integrity

Gregory T. Robertson, Elizabeth Di Russo Case, Nicole Dobbs, Christine Ingle, Murat Balaban, Jean Celli, Michael V. Norgard 2935–2948

BACTERIAL INFECTIONS

Lack of Long-Lasting Hydrosalpinx in A/J Mice Correlates with Rapid but Transient Chlamydial Ascension and Neutrophil Recruitment in the Oviduct following Intravaginal Inoculation with *Chlamydia muridarum*

Hongbo Zhang, Zhou Zhou, Jianlin Chen, Ganqiu Wu, Zhangsheng Yang, Zhiguang Zhou, Joel Baseman, Jin Zhang, Robert Lee Reddick, Guangming Zhong 2688–2696

***Chlamydia trachomatis* Polymorphic Membrane Protein D Is a Virulence Factor Involved in Early Host-Cell Interactions**

Laszlo Kari, Timothy R. Southern, Carey J. Downey, Heather S. Watkins, Linnell B. Randall, Lacey D. Taylor, Gail L. Sturdevant, William M. Whitmire, Harlan D. Caldwell 2756–2762

Epidemic *Clostridium difficile* Strains Demonstrate Increased Competitive Fitness Compared to Nonepidemic Isolates

Catherine D. Robinson, Jennifer M. Auchtung, James Collins, Robert A. Britton 2815–2825

Mechanism of Asp24 Upregulation in *Brucella abortus* Rough Mutant with a Disrupted O-Antigen Export System and Effect of Asp24 in Bacterial Intracellular Survival

Mingxing Tian, Jing Qu, Xianghan Han, Chan Ding, Shaohui Wang, Daxin Peng, Shengqing Yu 2840–2850

Synergistic Effects of *Clostridium perfringens* Enterotoxin and Beta Toxin in Rabbit Small Intestinal Loops

Menglin Ma, Abhijit Gurjar, James R. Theoret, Jorge P. Garcia, Juliann Beingesser, John C. Freedman, Derek J. Fisher, Bruce A. McClane, Francisco A. Uzal 2958–2970

Metal-Mediated Modulation of Streptococcal Cysteine Protease Activity and Its Biological Implications

Karthickeyan Chella Krishnan, Santhosh Mukundan, Julio A. Landero Figueroa, Joseph A. Caruso, Malak Kotb 2992–3001

Identification and Characterization of a Peculiar *vtx2*-Converting Phage Frequently Present in Verocytotoxin-Producing *Escherichia coli* O157 Isolated from Human Infections

Rosangela Tozzoli, Laura Grande, Valeria Michelacci, Rosa Fioravanti, David Gally, Xuefang Xu, Roberto La Ragione, Muna Anjum, Guanghui Wu, Alfredo Caprioli, Stefano Morabito 3023–3032

Cytadherence of *Mycoplasma pneumoniae* Induces Inflammatory Responses through Autophagy and Toll-Like Receptor 4

Takashi Shimizu, Yui Kimura, Yutaka Kida, Koichi Kuwano, Masato Tachibana, Masanori Hashino, Masahisa Watarai 3076–3086

HOST RESPONSE AND INFLAMMATION

- Enteropathogenic *Escherichia coli* Inhibits Type I Interferon- and RNase L-Mediated Host Defense To Disrupt Intestinal Epithelial Cell Barrier Function 2802–2814
Tiha M. Long, Shahista Nisa, Michael S. Donnenberg, Bret A. Hassel
- Chronicity of Dermal Leishmaniasis Caused by *Leishmania panamensis* Is Associated with Parasite-Mediated Induction of Chemokine Gene Expression 2872–2880
Adriana Navas, Deninson Alejandro Vargas, Marina Freudzon, Diane McMahon-Pratt, Nancy Gore Saravia, María Adelaida Gómez
- Chemokines and Antimicrobial Peptides Have a *cag*-Dependent Early Response to *Helicobacter pylori* Infection in Primary Human Gastric Epithelial Cells 2881–2889
Pascale Mustapha, Isabelle Paris, Magali Garcia, Cong Tri Tran, Julie Cremitter, Martine Garnier, Jean-Pierre Faure, Thierry Barthes, Ivo G. Boneca, Franck Morel, Jean-Claude Lecron, Christophe Burucoa, Charles Bodet
- Staphylococcal Enterotoxin B-Induced MicroRNA-155 Targets SOCS1 To Promote Acute Inflammatory Lung Injury 2971–2979
Roshni Rao, Prakash Nagarkatti, Mitzi Nagarkatti
- Effector CD8⁺ T Cells Are Generated in Response to an Immunodominant Epitope in Type III Effector YopE during Primary *Yersinia pseudotuberculosis* Infection 3033–3044
Yue Zhang, Patricio Mena, Galina Romanov, James B. Bliska
- Role of Tumor Suppressor TSC1 in Regulating Antigen-Specific Primary and Memory CD8 T Cell Responses to Bacterial Infection 3045–3057
Sruti Krishna, Jialong Yang, Hongxia Wang, Yurong Qiu, Xiao-Ping Zhong

FUNGAL AND PARASITIC INFECTIONS

- Defects in Phosphate Acquisition and Storage Influence Virulence of *Cryptococcus neoformans* 2697–2712
Matthias Kretschmer, Ethan Reiner, Guanggan Hu, Nicola Tam, Debora L. Oliveira, Melissa Caza, Ju Hun Yeon, Jeongmi Kim, Christian J. Kastrup, Won Hee Jung, James W. Kronstad
- Site-Dependent Recruitment of Inflammatory Cells Determines the Effective Dose of *Leishmania major* 2713–2727
Flavia L. Ribeiro-Gomes, Eric Henrique Roma, Matheus B. H. Carneiro, Nicole A. Doria, David L. Sacks, Nathan C. Peters
- Giardia duodenalis* Cathepsin B Proteases Degrade Intestinal Epithelial Interleukin-8 and Attenuate Interleukin-8-Induced Neutrophil Chemotaxis 2772–2787
James A. Cotton, Amol Bhargava, Jose G. Ferraz, Robin M. Yates, Paul L. Beck, Andre G. Buret
- VCAM-1/ $\alpha 4\beta 1$ Integrin Interaction Is Crucial for Prompt Recruitment of Immune T Cells into the Brain during the Early Stage of Reactivation of Chronic Infection with *Toxoplasma gondii* To Prevent Toxoplasmic Encephalitis 2826–2839
Qila Sa, Eri Ochiai, Tomoko Sengoku, Melinda E. Wilson, Morgan Brogli, Stephen Crutcher, Sara A. Michie, Baohui Xu, Laura Payne, Xisheng Wang, Yasuhiro Suzuki
- Candida glabrata* Intra-Abdominal Candidiasis Is Characterized by Persistence within the Peritoneal Cavity and Abscesses 3015–3022
Shaoji Cheng, Cornelius J. Clancy, Douglas J. Hartman, Binghua Hao, M. Hong Nguyen
- Phenotypic Differences of *Cryptococcus* Molecular Types and Their Implications for Virulence in a *Drosophila* Model of Infection 3058–3065
George R. Thompson III, Nathaniel Albert, Greg Hodge, Mabelle D. Wilson, Jane E. Sykes, Derek J. Bays, Carolina Firacative, Wieland Meyer, Dimitrios P. Kontoyiannis

MICROBIAL IMMUNITY AND VACCINES

- A *Listeria monocytogenes*-Based Vaccine That Secretes Sand Fly Salivary Protein LJM11 Confers Long-Term Protection against Vector-Transmitted *Leishmania major***
Delbert S. Abi Abdallah, Alan Pavinski Bitar, Fabiano Oliveira, Claudio Meneses, Justin J. Park, Susana Mendez, Shaden Kamhawi, Jesus G. Valenzuela, H el ene Marquis 2736–2745
- Characterization of Immunological Cross-Reactivity between Enterotoxigenic *Escherichia coli* Heat-Stable Toxin and Human Guanylin and Uroguanylin**
Arne M. Taxt, Yuleima Diaz, Am elie Bacle, C edric Grauffel, Nathalie Reuter, Rein Aasland, Halvor Sommerfelt, P al Puntervoll 2913–2922
- Structural Conservation, Variability, and Immunogenicity of the T6 Backbone Pilin of Serotype M6 *Streptococcus pyogenes***
Paul G. Young, Nicole J. Moreland, Jacelyn M. Loh, Anita Bell, Polly Atatoa Carr, Thomas Proft, Edward N. Baker 2949–2957
- Virulence and Immunity Orchestrated by the Global Gene Regulator *sigL* in *Mycobacterium avium* subsp. *paratuberculosis***
Pallab Ghosh, Howard Steinberg, Adel M. Talaat 3066–3075
- AUTHOR CORRECTIONS**
- The RNA Chaperone Hfq Is Required for Virulence of *Bordetella pertussis***
Ilona Bibova, Karolina Skopova, Jiri Masin, Ondrej Cerny, David Hot, Peter Sebo, Branislav Vecerek 3087
- The *Bordetella pertussis* Type III Secretion System Tip Complex Protein Bsp22 Is Not a Protective Antigen and Fails To Elicit Serum Antibody Responses during Infection of Humans and Mice**
Rodrigo Villarino Romero, Ilona Bibova, Ondrej Cerny, Branislav Vecerek, Tomas Wald, Oldrich Benada, Jana Zavadilova, Radim Osicka, Peter Sebo 3088