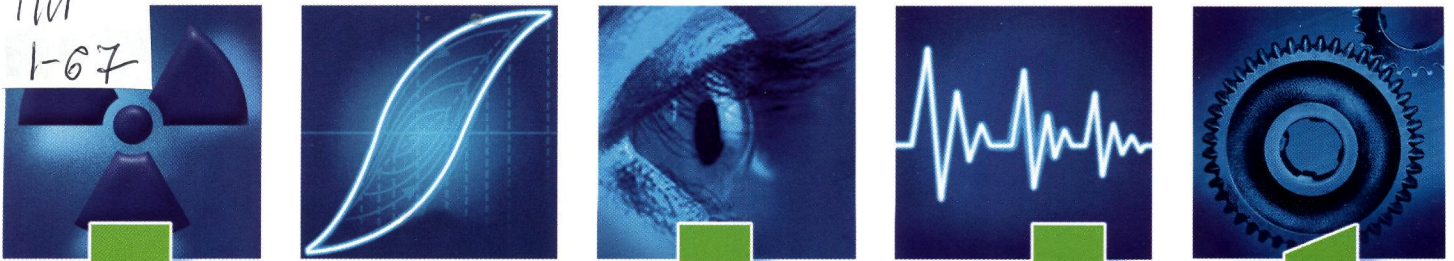


771  
1-67



# Insight

Non-Destructive Testing and Condition Monitoring

July 2013



Published by:  
The British Institute of Non-Destructive Testing  
Newton Building, St George's Avenue  
Northampton NN2 6JB, UK  
Tel: +44 (0)1604 89 3811;  
Fax: +44 (0)1604 89 3861;  
E-mail: info@bindt.org; Website: www.bindt.org



# Insight

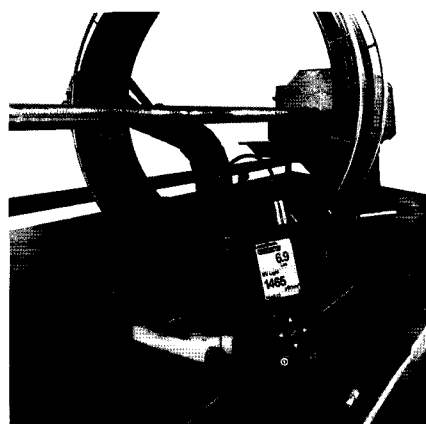
**Volume 55 Number 7**

**July 2013**

Comment, by *Dr W E Gardner* ..... 346

NEWSDESK: National Skills Academy for Nuclear and National Nuclear Laboratory sign agreement on high-level skills for the nuclear sector; New CEO at FLIR Systems; Professor Robert Smith – the NDT path to lighter aerostructures ..... 348

**COVER**



This month's front cover shows the LumaCheck dual UV and white light meter from Baugh & Weedon. It is designed and manufactured in the UK and offers users the most accurate results and versatile calibration options available on the market.

The LumaCheck is a truly unique system design, since it is the sensor head that stores the calibration details and not the instrument itself. The LumaCheck unit is purely a method of displaying results. Potentially, this can mean that only the sensor needs to be calibrated, allowing the sensor to be 'hot-swapped' with another, with the LumaCheck remaining in continuous use.

This revolutionary design feature is exclusive to the LumaCheck and something that has previously never been achieved in any light meter.

Offering accuracy, high-quality design and flexibility, the LumaCheck is a truly unrivalled dual UV and white light meter. Being a Baugh & Weedon product, it also comes with the guarantee of quality and reputable calibration services.

**Baugh & Weedon**  
[www.bw-nde.com](http://www.bw-nde.com)

**SPECIAL FEATURE: THE RAIL INDUSTRY**

Visual algorithms for automatic detection of squat flaws in railway rails, by *P Bojarczak* ..... 353

A novel online defect detection method based on X-ray images of railway castings, by *Kuan Shen and Yufang Cai* ..... 360

**FEATURES**

Detection of flaws in aluminium castings: a comparative study between generative and discriminant approaches, by *F Ramirez and H Allende* ..... 366

Hybrid modelling for leak detection of long-distance gas transport pipeline, by *Wang Junru, Wang Tao and Wang Juncheng* ..... 372

Innovative method used to evaluate the effect of power washing on marine concrete – a UK site study, by *P Hughes, D Fairhurst, I Sherrington, N Renevier and G Morton* ..... 382

Strain-free optical fibre temperature sensor using Brillouin optical time domain analyser, by *M Kasinathan, A Wosniok, K Krebber, C Babu Rao, N Murali and T Jayakumar* ..... 387

**REGULAR FEATURES**

International Diary ..... 391

NDT Info ..... 396

Product Showcase ..... 405

Associate Members/Index to Advertisers ..... 408