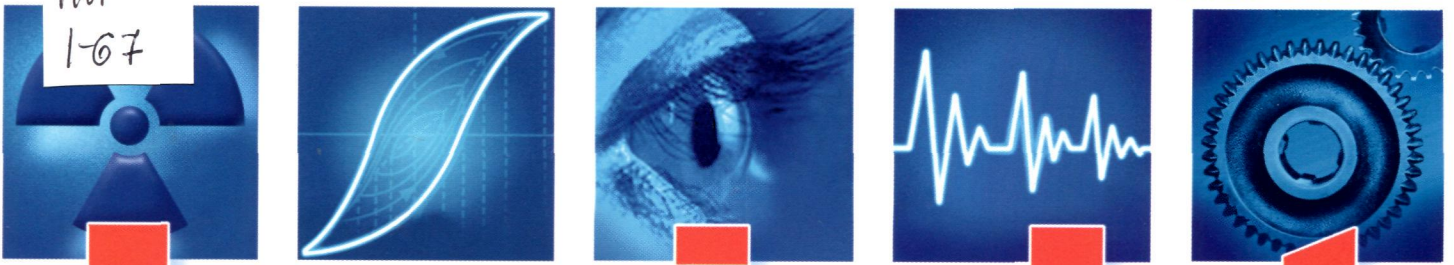


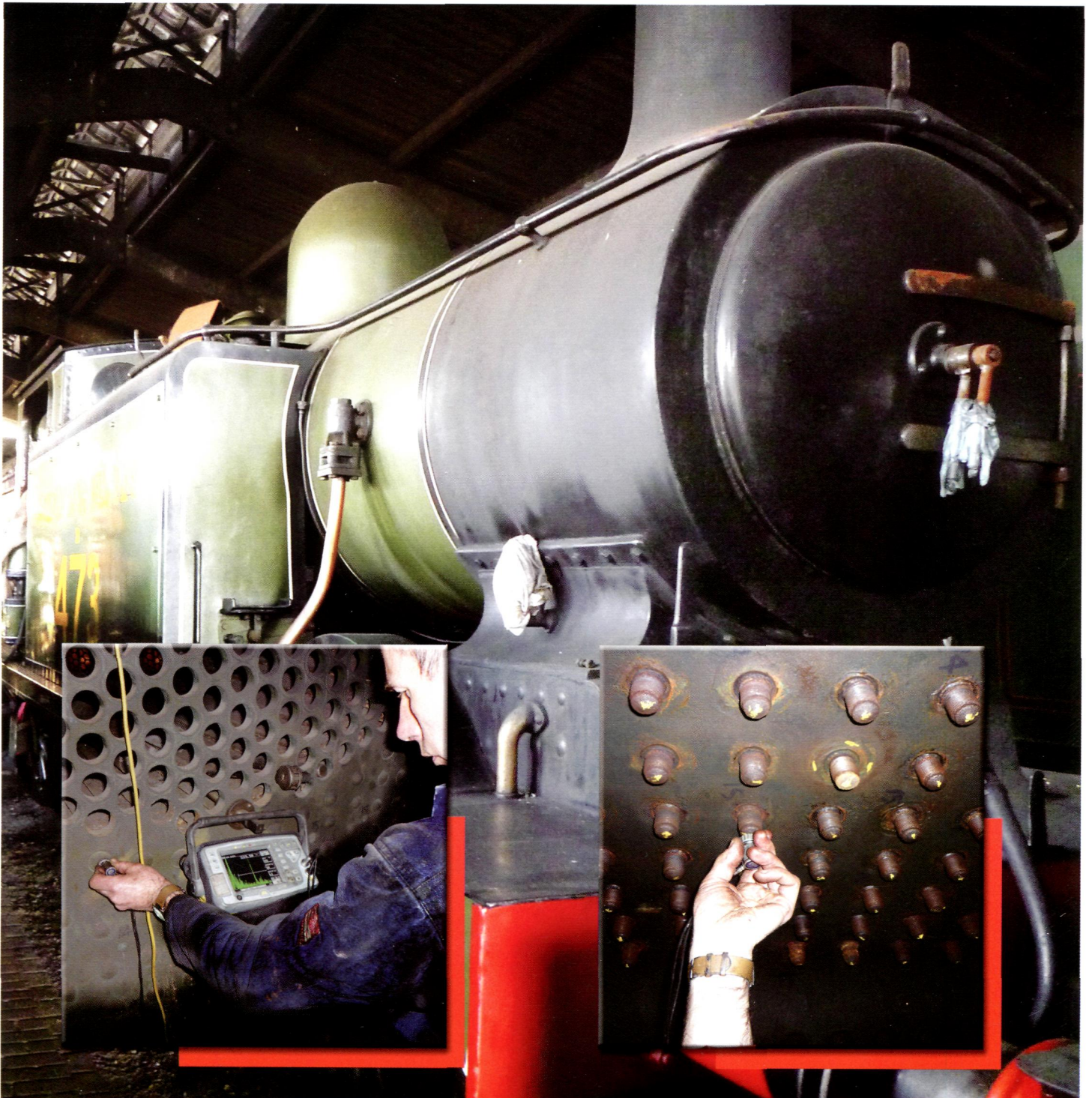
FLU
1-67

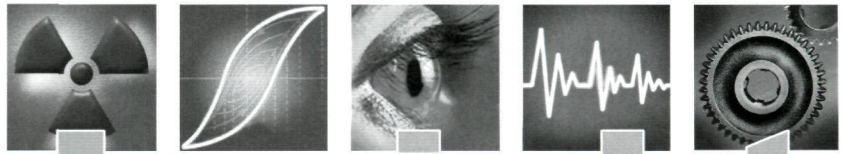


Insight

Non-Destructive Testing and Condition Monitoring

May 2014





Insight

Published by:
The British Institute of Non-Destructive Testing
Newton Building, St George's Avenue
Northampton NN2 6JB, UK
Tel: +44 (0)1604 89 3811;
Fax: +44 (0)1604 89 3861;
E-mail: info@bindt.org; Website: www.bindt.org

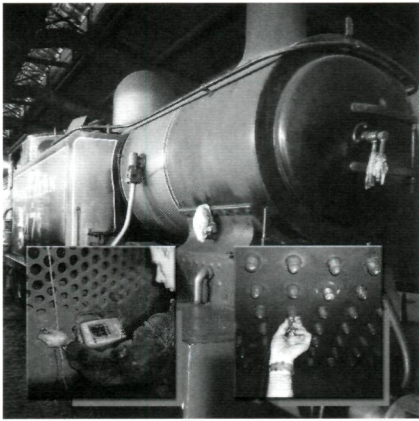
Volume 56 Number 5

May 2014

Comment, by *Dr I Baillie*..... 234

NEWSDESK: Industry cooperation to improve integrity assessment of steel wire ropes for subsea lifting applications; Shining a spotlight on excellence in skills for nuclear..... 236

COVER



The Bluebell Railway Locomotive yard, East Sussex, is a volunteer-run line and was the UK's first preserved standard gauge passenger railway, re-opening in 1960. Ongoing maintenance is an essential part of the operational programme and running of the Bluebell Railway, preserving some of the UK's Victorian railway heritage. Chris Shepherd, who manages the engineering and workshops, uses NDT as part of this process.

One key procedure, for performance and insurance specifications, is the inspection of the integrity of the locomotive's 'India Boiler', specifically the inner and outer copper shell stays and the pins that hold the shells of the boiler together, as they are under extreme pressure once the vessel is 'under steam'. These routine maintenance inspections are conducted using the Sonatest Sitiescan 123W and Sirius transducers. Secondary insurance inspections are also conducted by an insurance-approved welding inspector, using a Sitiescan 250S to certify any new welds or repairs. Further NDT inspections are also conducted to verify the copper and steel shell plate thicknesses before and after rework.

Sonatest
www.sonatest.com

FEATURES

Improving an adaptive filtering system for ultrasonic testing,
by *M S Mohammed and Kim Ki-Seong*..... 240

Analysis of non-destructive testing of three-dimensional braided composites using scanning SQUID NDT,
by *Wan Zhenkai, Wang Zhangang and Guo Jianmin*..... 246

Magnetic field variation of a low-carbon steel under tensile stress,
by *S Bao, H Lou and S Gong*..... 252

Phased array inspection at elevated temperatures: effects of ultrasonic beam skew,
by *M Marvasti, J Bond, M Matheson and A N Sinclair*..... 256

Some ideas on the inspection of aluminium mountain bicycle frames,
by *M Giorgetti, M Ruch, J Fava, M Tacchia and E N Olivar Godaz*..... 264

Investigation on acoustic emission characteristics of a paper dryer,
by *Lifei Li, Gongtian Shen, Zheng Zhang and Zhanwen Wu*..... 269

REGULAR FEATURES

International Diary 276

NDT Info..... 278

Product Showcase 286

Associate Members/Index to Advertisers 288

