

770  
1-69/jr1

Volume 65  
www.elsevier.com

January 2014

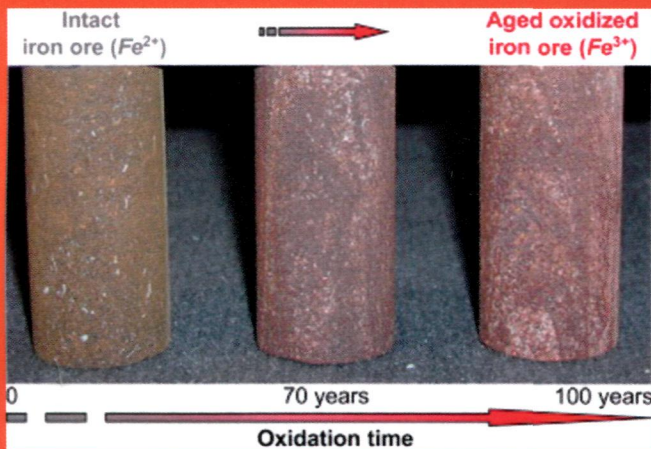
ISSN 1365-1609



New developments and case studies in rock mechanics  
and rock engineering

# International Journal of Rock Mechanics and Mining Sciences

Editor-in-Chief: **R. W. Zimmerman**, *Imperial College, London, UK*



- fundamental rock behaviour
- *in situ* stress
- site investigation
- rock cutting and drilling
- underground excavations
- rock reinforcement and support
- dam engineering
- geothermal energy
- petroleum engineering
- radioactive waste disposal

## CONTENTS

*Articles*

- |   |     |   |
|---|-----|---|
| <b>G. van Wyk, D.N.J. Els, G. Akdogan, S.M. Bradshaw and N. Sacks</b>           | 8   | Discrete element simulation of tribological interactions in rock cutting  |
| <b>C. Agan</b>  | 20  | Determination of the deformation modulus of dispersible-intercalated-jointed cherts using the Menard pressuremeter test                               |
| <b>D.P. Blair</b>   | 29  | Blast vibration dependence on charge length, velocity of detonation and layered media   |
| <b>M. Afifipour and P. Moarefvand</b>   | 40  | Mechanical behavior of bimrocks having high rock block proportion   |
| <b>A.K.M.B. Alam, M. Niioka, Y. Fujii, D. Fukuda and J.-i. Kodama</b>           | 49  | Effects of confining pressure on the permeability of three rock types under compression   |
| <b>M. Stavropoulou</b>  | 62  | Discontinuity frequency and block volume distribution in rock masses  |
| <b>Z. Duan, C.A. Davy, F. Agostini, L. Jeannin, D. Troadec and F. Skoczylas</b> | 75  | Gas recovery potential of sandstones from tight gas reservoirs  |
| <b>E. Ghasemi, M. Ataei and K. Shahriar</b>                                     | 86  | An intelligent approach to predict pillar sizing in designing room and pillar coal mines  |
| <b>A. Lisjak, G. Grasselli and T. Vietor</b>                                    | 96  | Continuum–discontinuum analysis of failure mechanisms around unsupported circular excavations in anisotropic clay shales                              |
| <b>Y. Tal, Y.H. Hatzor and X.-T. Feng</b>                                       | 116 | An improved numerical manifold method for simulation of sequential excavation in fractured rocks  |
| <b>B. Li, R.C.K. Wong and T. Milnes</b>   | 129 | Anisotropy in capillary invasion and fluid flow through induced sandstone and shale fractures   |
| <b>M. Haftani, B. Bohlooli, A. Nouri, M.R. Maleki Javan and M. Moosavi</b>      | 141 | Size effect in strength assessment by indentation testing on rock fragments   |
| <i>Technical Notes</i>  |     |   |
| <b>T. Tokiwa, K. Tsusaka, M. Matsubara and T. Ishikawa</b>                      | 1   | Fracture characterization around a gallery in soft sedimentary rock in Horonobe URL of Japan  |
| <b>R. Gryc, L.M. Hlaváč, M. Mikoláš, J. Šancer and T. Daněk</b>                 | 149 | Correlation of pure and abrasive water jet cutting of rocks   |
| <b>G. Kwiatek, E.-M. Charalampidou, G. Dresen and S. Stanchits</b>              | 153 | An improved method for seismic moment tensor inversion of acoustic emissions through assessment of sensor coupling and sensitivity to incidence angle |

IJRMMS now has a dedicated WWW page: <http://www.elsevier.com/locate/ijrmms>

*Int. J. Rock Mech. Min. Sci.* is Indexed/Abstracted in: Appl. Mech. Rev., Cam. Sci. Abstr., Curr. Cont./Eng. Tech. & Appl. Sci., Eng. Ind., Curr. Cont. Sci. Cit. Ind., Curr. Cont. SCISEARCH Data, Geo. Abstr., Geo. Bib. & Ind., INSPEC Data., Int. Civil Eng. Abstr., Mater. Sci. Cit. Ind., PASCAL-CNRS Data., Res. Alert. Also covered in the abstract and citation database SCOPUS®. Full text available in ScienceDirect®.



1365-1609(201401)65:C;1-M

ISSN 1365-1609