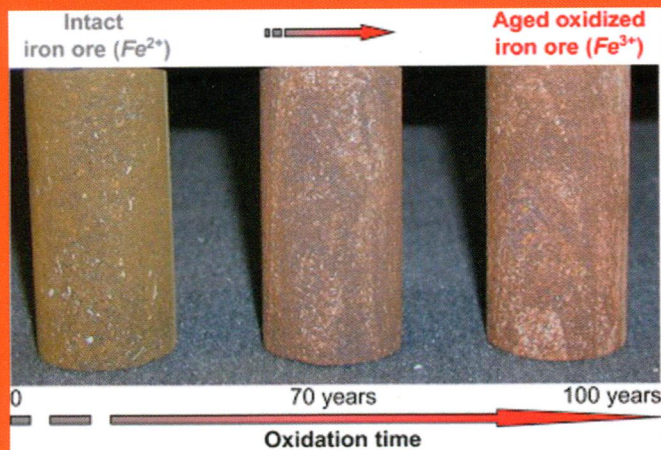


New developments and case studies in rock mechanics  
and rock engineering

# International Journal of Rock Mechanics and Mining Sciences

Editor-in-Chief: **R. W. Zimmerman**, *Imperial College, London, UK*



- fundamental rock behaviour
- *in situ* stress
- site investigation
- rock cutting and drilling
- underground excavations
- rock reinforcement and support
- dam engineering
- geothermal energy
- petroleum engineering
- radioactive waste disposal

## CONTENTS

## Articles

- |   |     |   |
|---|-----|---|
| <b>O. Pourhosseini and M. Shabanimashcool</b>   | 1   | Development of an elasto-plastic constitutive model for intact rocks  |
| <b>A. Sainoki and H.S. Mitri</b>  | 19  | Dynamic behaviour of mining-induced fault slip  |
| <b>J. Liu, P. Sun, F. Liu and M. Zhao</b>   | 30  | Design and optimization for bench blast based on Voronoi diagram  |
| <b>I. Yilmaz and Ö. Yucel</b>   | 57  | Use of the core strangle test for determining strength anisotropy of rocks  |
| <b>Z. Zhao, L. Liu, I. Neretnieks and L. Jing</b>   | 69  | Solute transport in a single fracture with time-dependent aperture due to chemically mediated changes                                       |
| <b>R. Sebastian and T.G. Sitharam</b>   | 84  | Transmission of elastic waves through a frictional boundary   |
| <b>S. Dehkoda and M. Hood</b>   | 91  | The internal failure of rock samples subjected to pulsed water jet impacts  |
| <b>M.S.D. Manzi, K.A.A. Hein, R.J. Durrheim and N. King</b>   | 97  | The Ventersdorp Contact Reef model in the Kloof Gold Mine as derived from 3D seismics, geological mapping and exploration borehole datasets |
| <b>C. Collettini, G. Di Stefano, B. Carpenter, P. Scarlato, T. Tesei, S. Mollo, F. Trippetta, C. Marone, G. Romeo and L. Chiaraluce</b> | 114 | A novel and versatile apparatus for brittle rock deformation  |
| <b>C. Kincal</b>  | 136 | Application of two new stereographic projection techniques to slope stability problems  |
| <b>V. Vilarrasa</b>   | 151 | Impact of CO <sub>2</sub> injection through horizontal and vertical wells on the caprock mechanical stability                               |
| <b>D. Huang and Y. Li</b>   | 160 | Conversion of strain energy in Triaxial Unloading Tests on Marble   |
| <b>W. Yang, Q. Zhang, S. Li and S. Wang</b>   | 169 | Estimation of in situ viscoelastic parameters of a weak rock layer by time-dependent plate-loading tests                                    |
| <b>G. Wang, L. Zhang, Y. Zhang and G. Ding</b>  | 181 | Experimental investigations of the creep–damage–rupture behaviour of rock salt  |
| <b>A.B. Yasrebi, A. Wetherelt, P. Foster, J. Coggan, P. Afzal, F. Agterberg and D. Kaveh Ahangaran</b>                                  | 188 | Application of a density–volume fractal model for rock characterisation of the Kahang porphyry deposit                                      |

*continued on inside back cover*IJRMMS now has a dedicated WWW page: <http://www.elsevier.com/locate/ijrmms>

*Int. J. Rock Mech. Min. Sci.* is Indexed/Abstracted in: Appl. Mech. Rev., Cam. Sci. Abstr., Curr. Cont./Eng. Tech. & Appl. Sci., Eng. Ind., Curr. Cont. Sci. Cit. Ind., Curr. Cont. SCISEARCH Data, Geo. Abstr., Geo. Bib. & Ind., INSPEC Data., Int. Civil Eng. Abstr., Mater. Sci. Cit. Ind., PASCAL–CNRS Data., Res. Alert. Also covered in the abstract and citation database SCOPUS®. Full text available in ScienceDirect®.



1365-1609(201402)66:C;1-I

ISSN 1365-1609

*continued from outside back cover*

*Technical Notes*

<b>S. Shnorhokian, H.S. Mitri and D. Thibodeau</b>	13	Numerical simulation of pre-mining stress field in a heterogeneous rockmass
<b>A.H. Deliormanli, N.H. Maerz and J. Otoo</b>	41	Using terrestrial 3D laser scanning and optical methods to determine orientations of discontinuities at a granite quarry
<b>H. Lin, Z. Xiong, T. Liu, R. Cao and P. Cao</b>	49	Numerical simulations of the effect of bolt inclination on the shear strength of rock joints
<b>G. Della Vecchia, A. Pandolfi, G. Musso and G. Capasso</b>	64	An analytical expression for the determination of in situ stress state from borehole data accounting for breakout size
<b>Z. Ma, R. Gu, Z. Huang, G. Peng, L. Zhang and D. Ma</b>	76	Experimental study on creep behavior of saturated disaggregated sandstone
<b>M. Palassi and V. Emami</b>	124	A new nail penetration test for estimation of rock strength
<b>H. Özşen, İ. Özkan and C. Şensöğüt</b>	128	Measurement and mathematical modelling of the creep behaviour of Tuzköy rock salt
<b>M.R. Vergara, K. Balthasar and T. Triantafyllidis</b>	177	Comparison of experimental results in a testing device for swelling rocks